

372000

373000

374000

375000

376000

5647000

5647000

5646000

5646000

5645000

5645000

5644000

5644000

5643000

5643000

5642000

5642000

5641000

5641000

372000

373000

374000

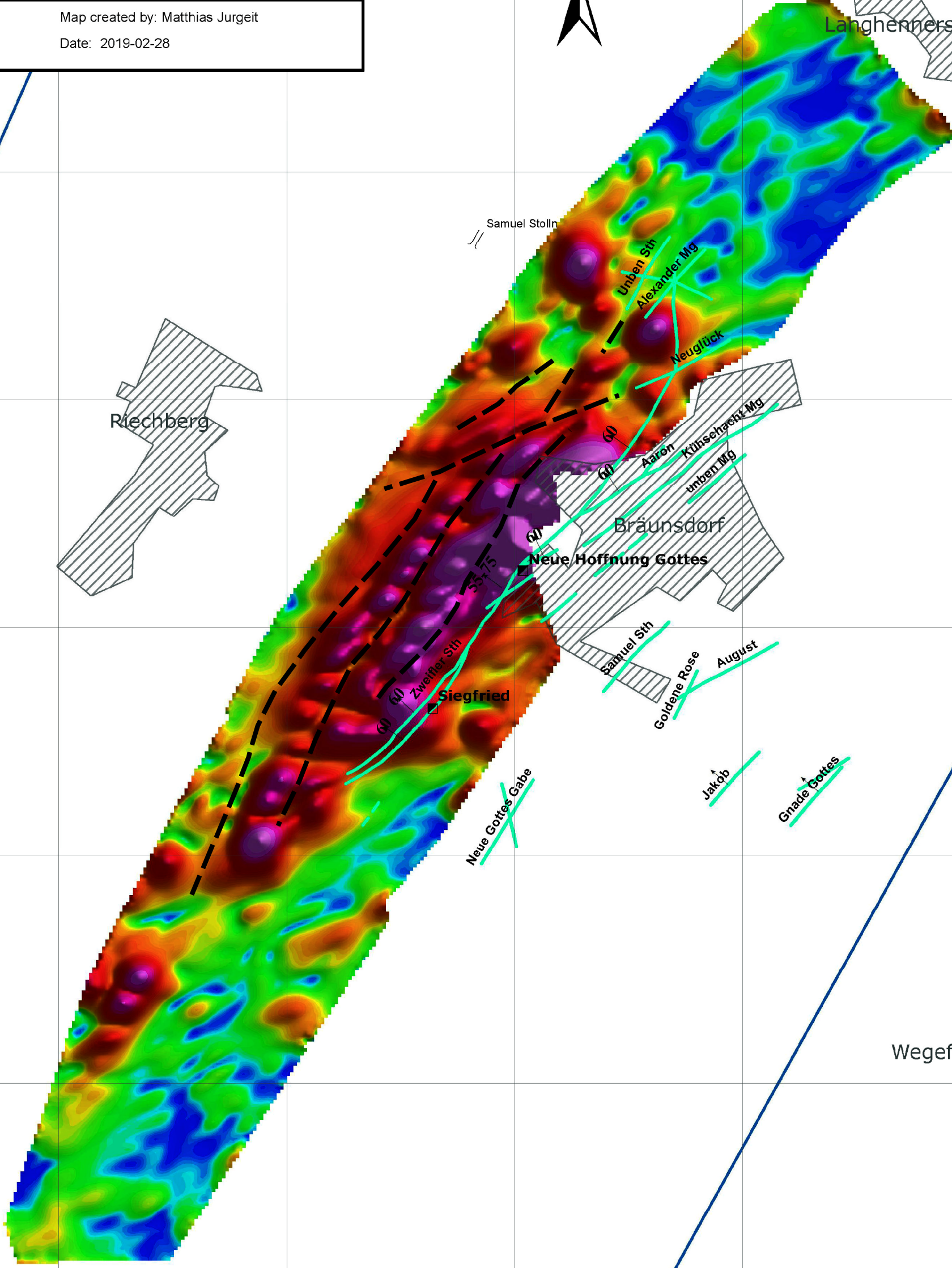
375000

376000








UTM grid WGS84, zone 33N

 **Globex Mining Enterprises Inc.**

Map created by: Matthias Jurgeit  
Date: 2019-02-28



**Preliminary Magnetics Analytical Signal & veins at Bräunsdorf mine camp**

	Bräunsdorf license	<b>hydrothermal veins</b>
	village	 epith. quartz-Ag (eq)
	Potential Parallel Silver Structures	 vein dip
		 mine shafts (inclined)
		 mine adits