

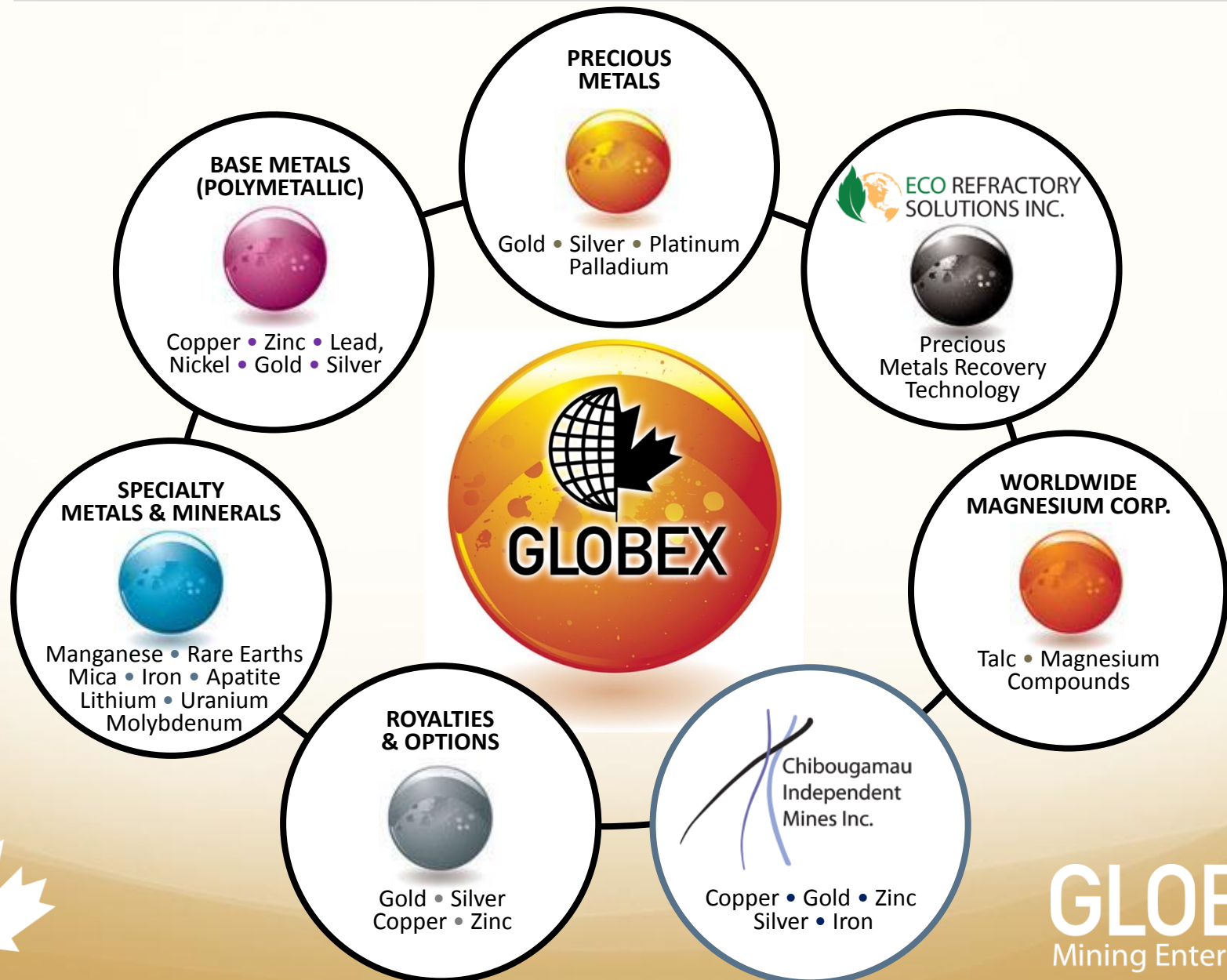


Forward-Looking Statements

Except for historical information, this presentation may contain certain “forward-looking statements”. These statements may involve a number of known and unknown risks and uncertainties and other factors that may cause the actual results, level of activity and performance to be materially different from the expectations and projections of Globex.

No assurance can be given that any events anticipated by the forward-looking information will transpire or occur, or if any of them do so, what benefits Globex will derive therefrom. A detailed discussion of the risk factors relating to Globex is available in Globex’s Annual Information Form, available at www.sedar.com.

At Home in North America



Globex Mining Enterprises Inc.

- Shares Issued 27, 896, 018 (no rollbacks)
 - Shares Fully Diluted 29, 938, 918
-

- Funds available for exploration
- No debt
- Own 100% of its property interests
- Based in North America. Primarily; Quebec, Ontario, Nova Scotia and New Brunswick
- Specialized and experienced Board of Directors composed of 4 senior geologists and 1 mining accountant



Stock Exchange Listings

GMX

Canada

Toronto

Germany

G1M

Xetra

Munich

Stuttgart

Berlin

Frankfurt

GLBXF

U.S.A

OTCQX International



Diversified Mineral Holdings

Precious Metals

Au • Gold
Ag • Silver
Pt • Platinum
Pd • Palladium

Base Metals

Cu • Copper
Zn • Zinc
Ni • Nickel
Pb • Lead

Specialty Metals

REE • Rare Earths
Fe • Iron
Mn • Manganese
Mo • Molybdenum
U • Uranium
F • Fluorine
Li • Lithium
Hf • Hafnium
Ce • Cerium
Zr • Zirconium
Y • Yttrium
Nb • Niobium

Industrial Metals

Magnesite
Talc
Phlogopite Mica
Apatite



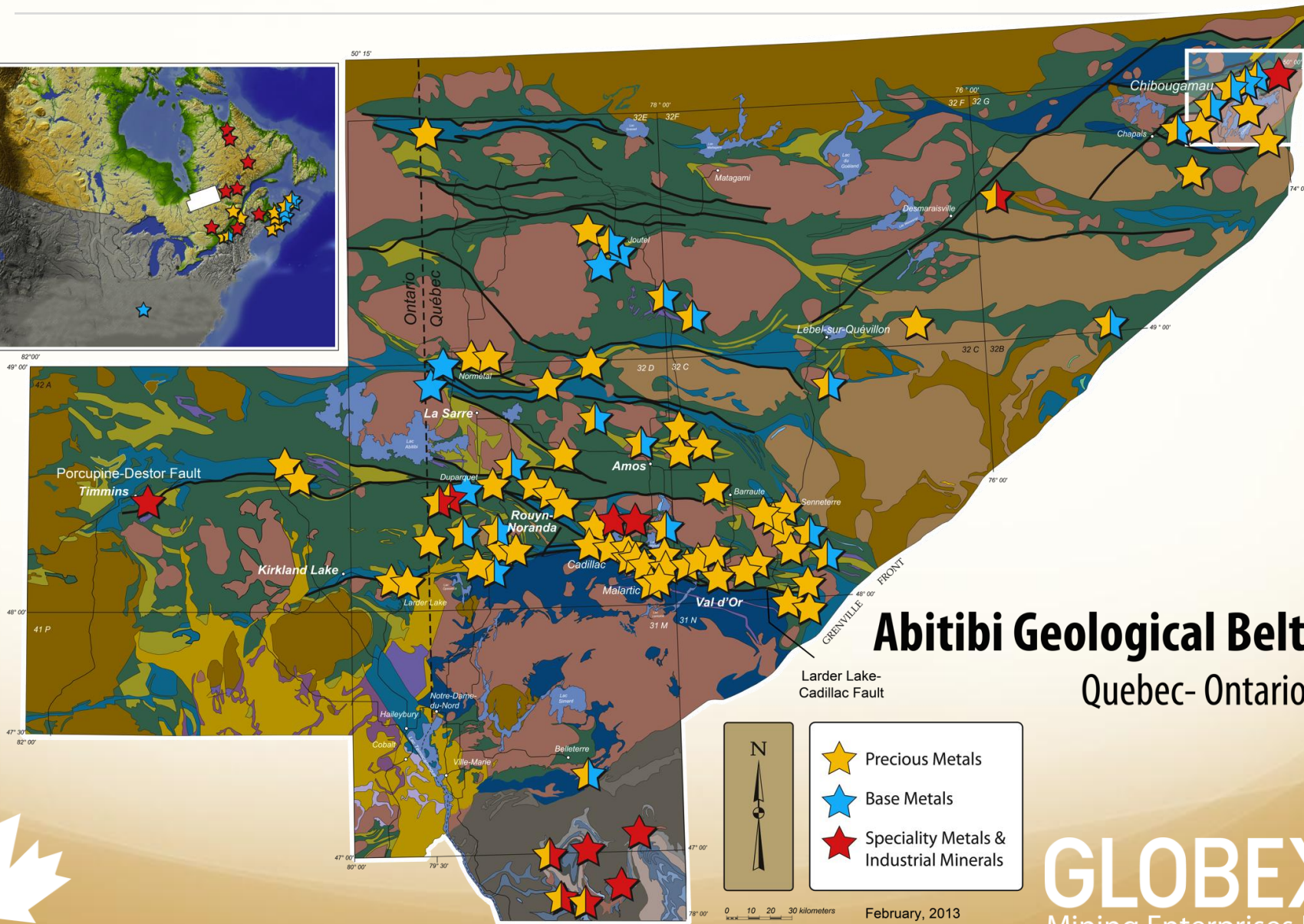
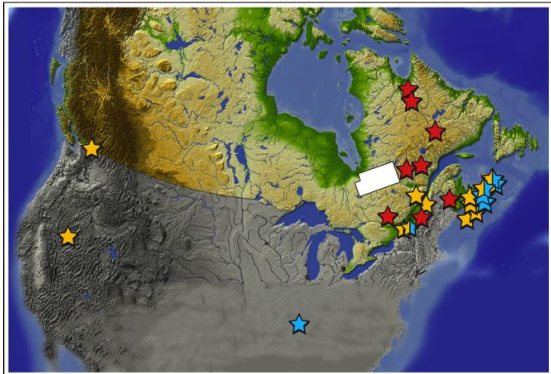


116	Properties
64	Precious Metals <ul style="list-style-type: none"> • Gold, Silver, Platinum, Palladium
40	Base Metals & Polymetallic <ul style="list-style-type: none"> • Copper, Zinc, Gold, Silver, Lead, Nickel
12	Specialty Metals & Minerals <ul style="list-style-type: none"> • Iron, Lithium, Magnesium Oxide, Manganese, Mica, Molybdenum, Rare Earths, Talc, Uranium, Titanium
30	Royalties
9	Active options <ul style="list-style-type: none"> • Cash payments • Share payments • Exploration & development expenditures • Gross metal royalty
41	Historical or NI 43-101 resources

Note: Some properties have been combined due to proximity or infill staking

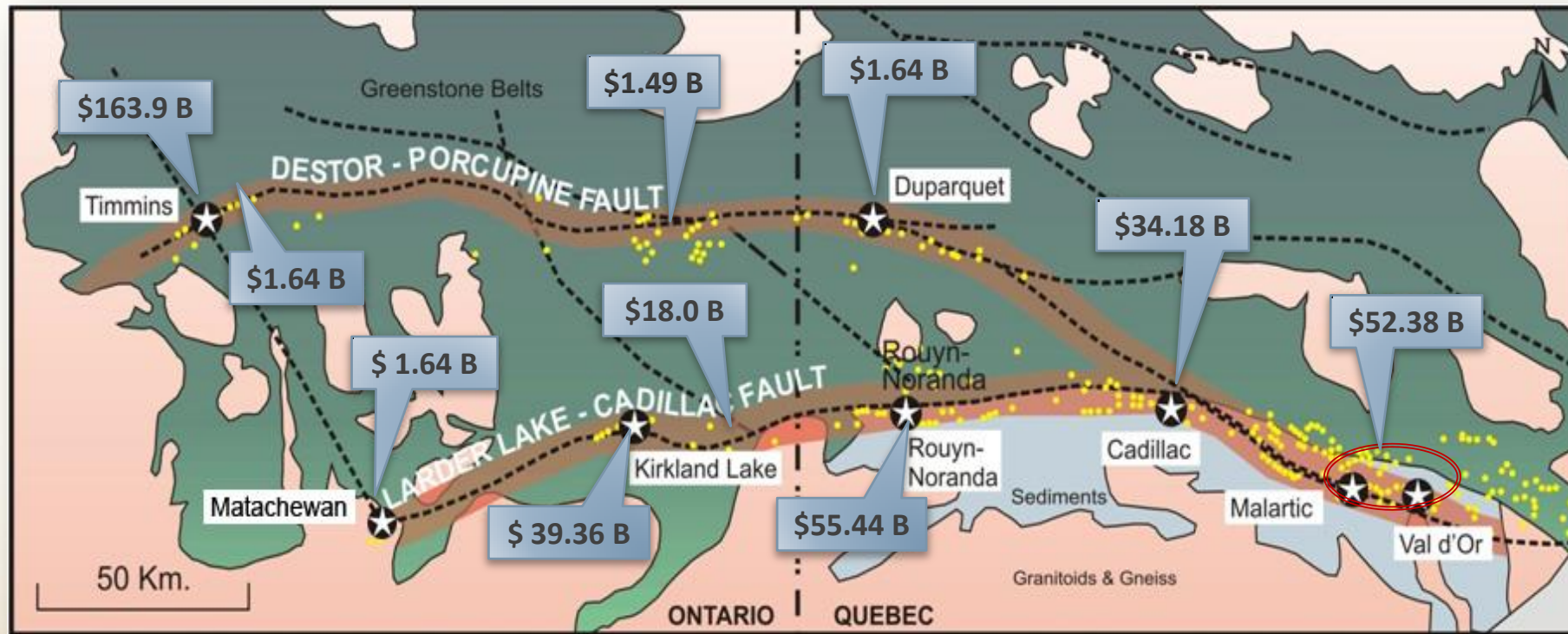


Diversified Mineral Holdings



Historical Value of Production

Total: US \$ 370 Billion



Au 166.61 Million oz

Zn 28.0 Billion lb

Ag 635.8 Million oz

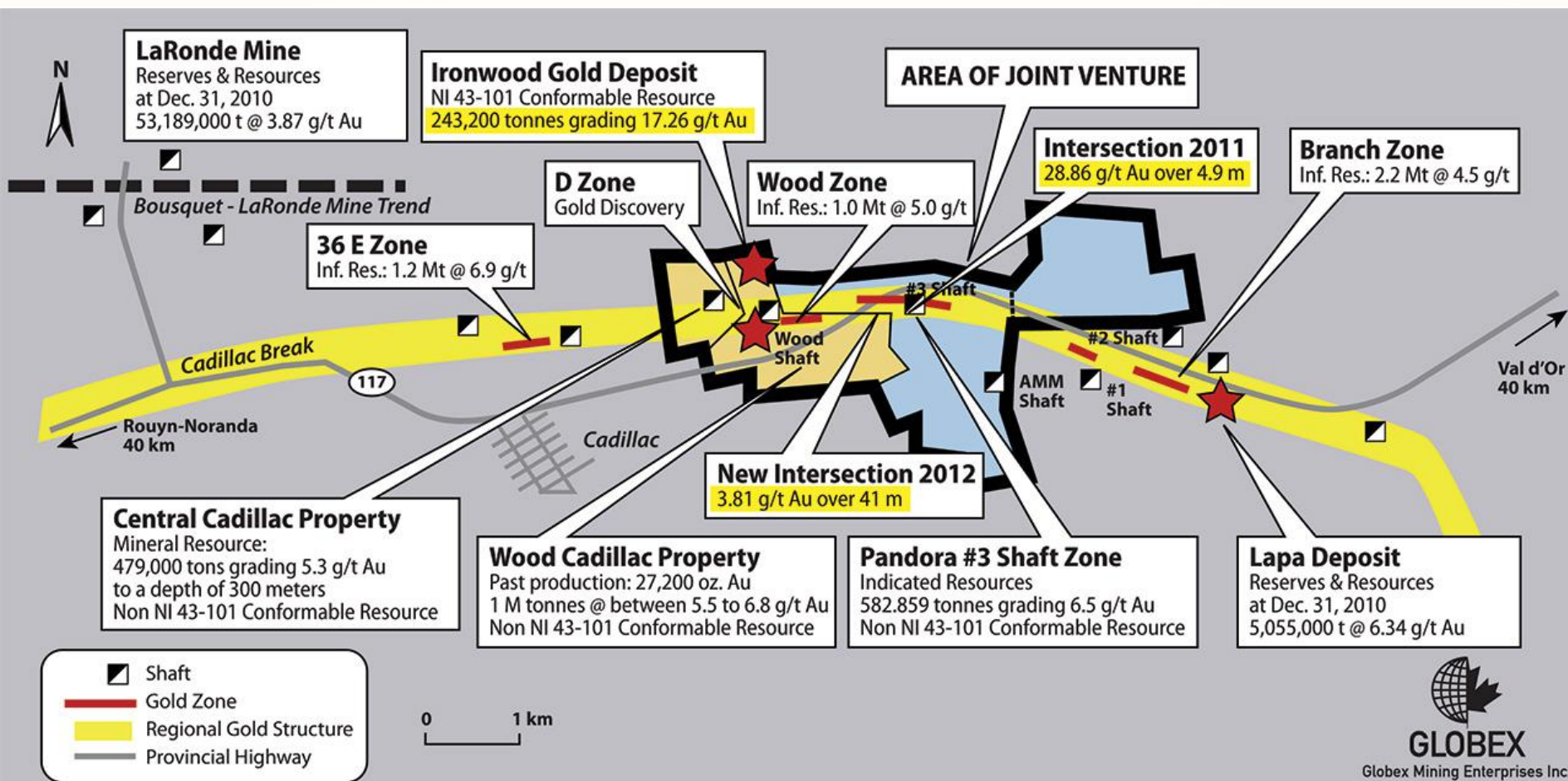
Cu 14.5 Billion lb

Metal Prices Used in Calculations

Au \$	1400.00/oz	Zn \$	0.82/lb
Ag \$	23.00/oz	Cu \$	3.30/lb



Cadillac Gold Camp (Wood-Pandora Joint Venture)



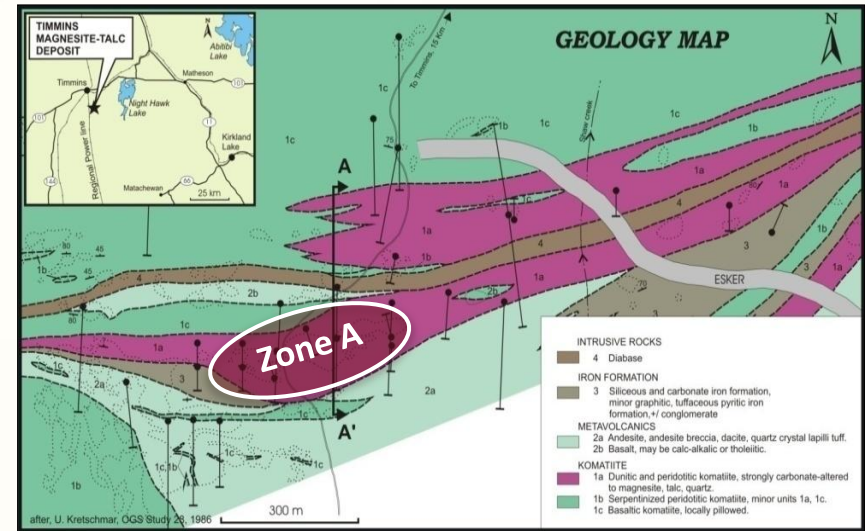
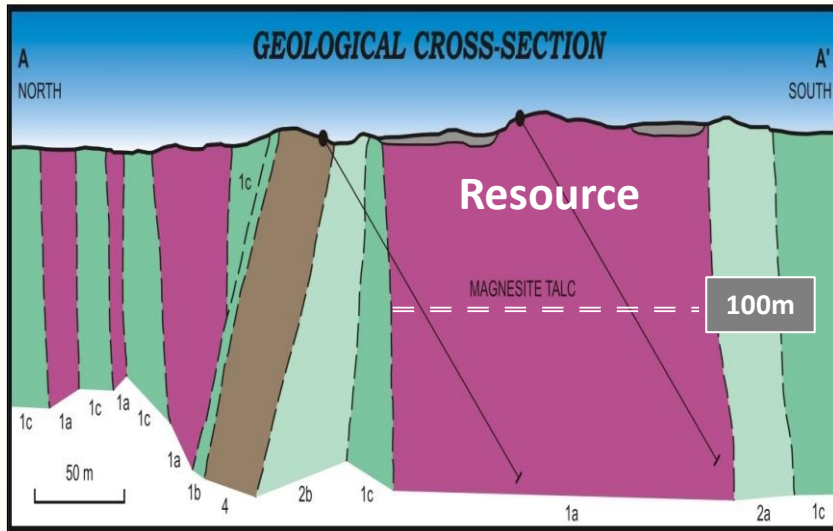
GLOBEX

Globex Mining Enterprises Inc.



GLOBEX
Mining Enterprises Inc.

Timmins Talc-Magnesite Project



Resource Category - Zone A	Tonnage (t)	Magnesite (%)	Talc (%)
Indicated	12,728,000	52.1	35.4
Inferred	18,778,000	53.1	31.7

20 year Preliminary Economic Assessment

- | | | | |
|----------------------------|------------------------|-------------------|--------------------------|
| • Magnesium Oxide (MgO) | > 94.8% Recovery | • Size Potential | + 100 M. Tonnes |
| • Talc | > 70.8% Recovery | • Life | + 60 years (Zone A only) |
| • Annual Tonnage Processed | 500,000 tonnes | • Mining Method | - Open Pit |
| • Total Sales (Gross) | > \$2,578,000,000 Cdn. | • MgO Purity | + 98% |
| • Pre-Production Cap Ex | > \$268,400,000 Cdn. | • Talc Brightness | 93-95 |
| • Price (MgO) | > \$570/t Cdn. | • After Tax IRR | 20% |
| • Price (Talc) | > \$500/t Cdn. | | |

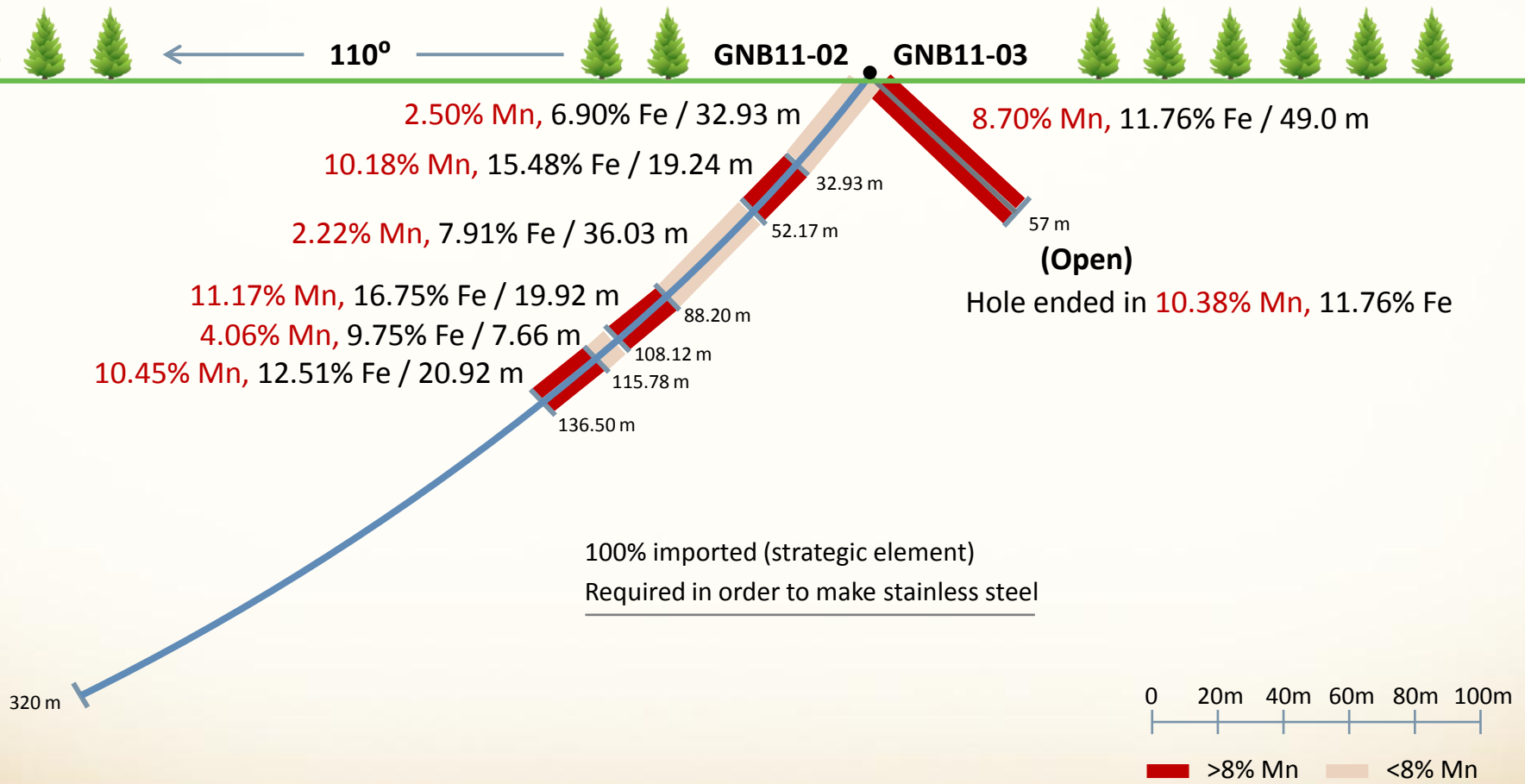
Projections based upon Micon International Limited PEA Report April 16, 2012

Resources : NI 43-101 conformable



GLOBEX
Mining Enterprises Inc.

Iron Hill (Manganese/Iron Deposit 21 J 04)



Realization of True Value

Spin Outs

**WORLDWIDE
MAGNESIUM CORP.**



Talc • Magnesium
Compounds



**ECO REFRACTORY
SOLUTIONS INC.**



Precious Metals
Recovery Technology



Chibougamau
Independent
Mines Inc.

8 former Au/Cu Mines
Large Land Position
2 Unmined Deposits

**MULTIPLE LAND
PACKAGES**



Gold • Base Metals
Industrial Minerals



GLOBEX
Mining Enterprises Inc.

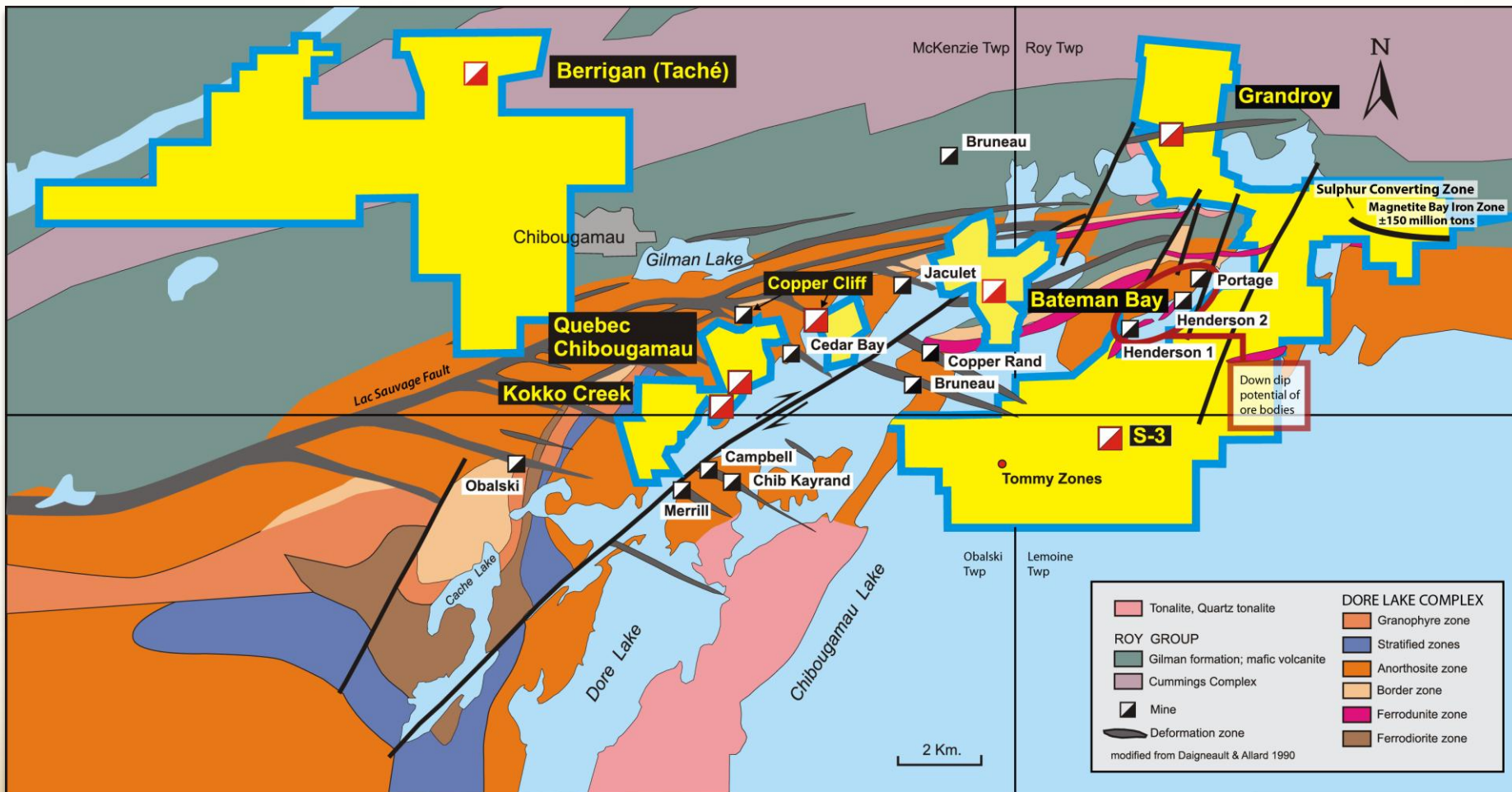
Chibougamau Mining Camp



- 100% interest in a major land package in the Chibougamau Mining Camp – 6,528 hectares
- 5 former copper-gold mines
- Down dip of 3 large copper-gold deposits
- 2 Unmined deposits (Au, Ag, Zn - Berrigan) & (Cu, Au – Bateman Bay)
- 1 Unmined iron/titanium/vanadium deposit
- Several partially defined copper-gold zones
- Large exploration land package with numerous targets
- No environmental liabilities



Geological Map of the Chibougamau Area

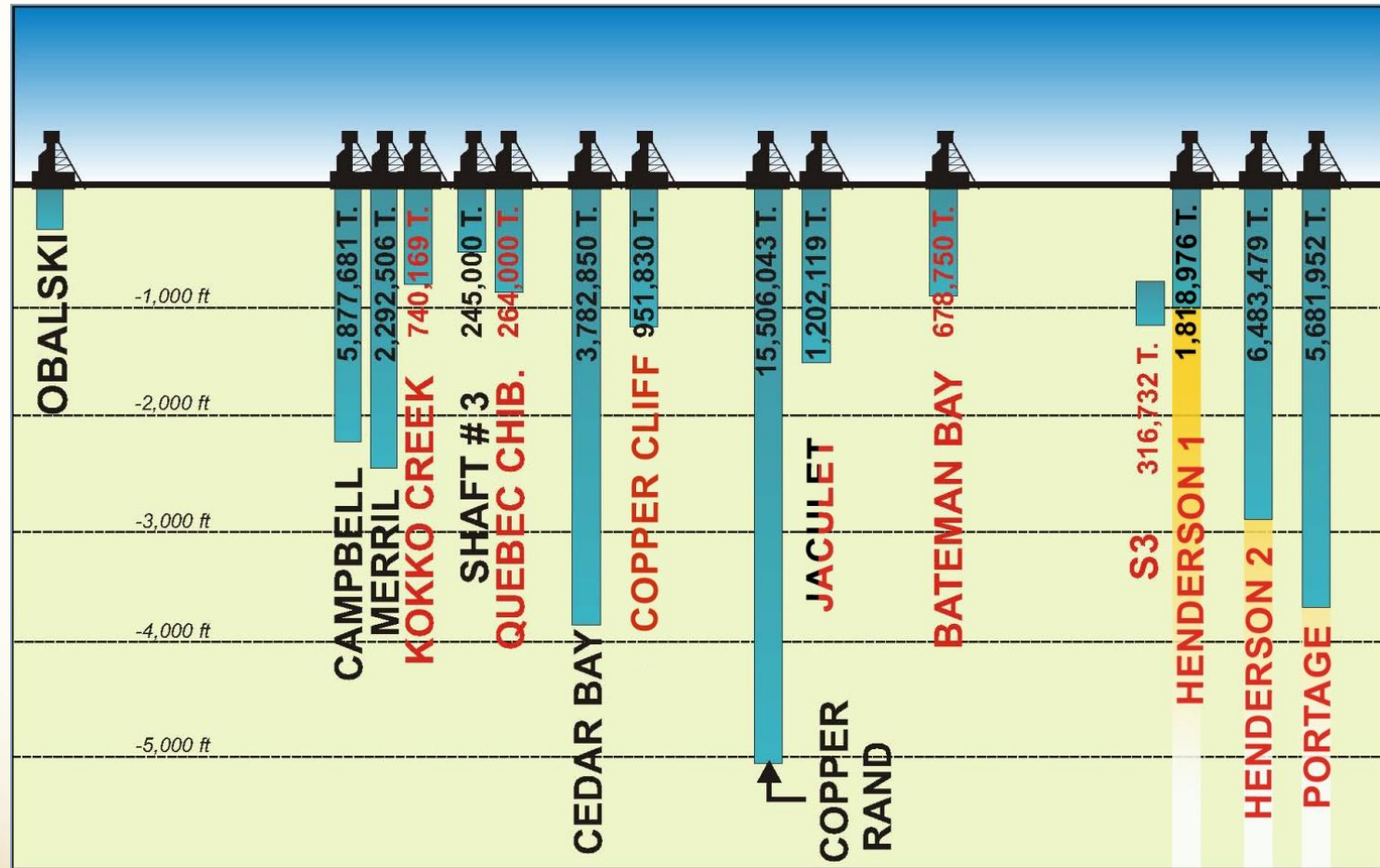


Historical Production - 47.6 Million Tons

- 1.6 billion lbs Cu
 - 3.2 million oz Au
- *3,000 tpd mill and permitted tailings facility Central to CIM property package



Doré Lake Complex (Copper-Gold)



Longitudinal Section – Chibougamau area, Quebec



Some Significant Gold Intersections Within Previous Drilling Berrigan Property 32G16

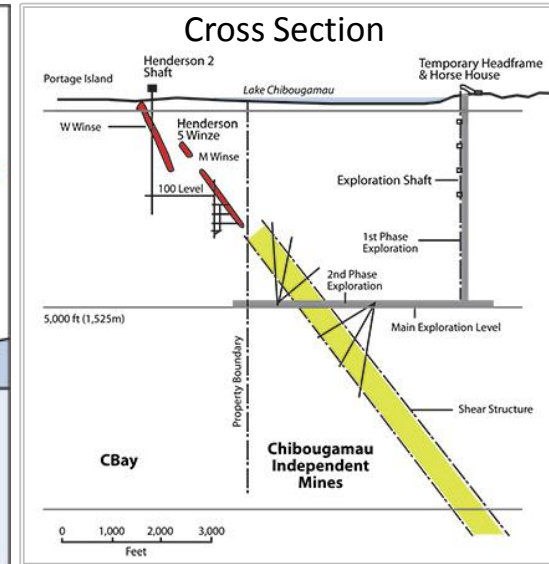
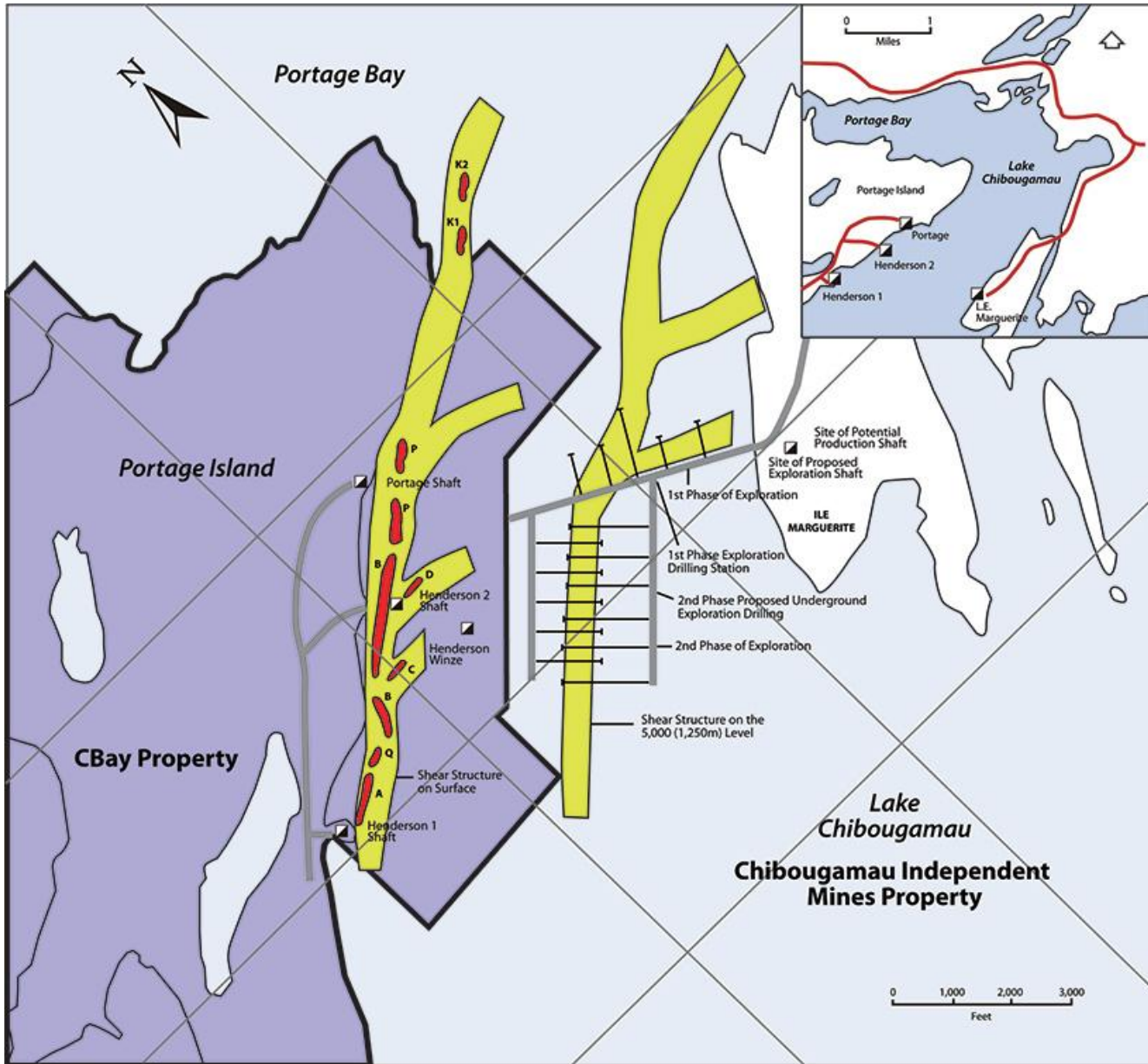
Surface diamond drill holes

Hole #	From	To	Interval	% Zn	% Cu	Au g/t	Ag g/t
A-005	131.4 m	140.2 m	8.8 m	5.70%		6.96 g/t	
A-010	97.3 m	105.2 m	7.9 m	4.43%		4.94 g/t	25.36 g/t
A-016	18.9 m	21.2 m	2.3 m	1.51%		6.43 g/t	
	76.2 m	77.7 m	1.5 m	3.45%		8.91 g/t	
A-061	91.6 m	100.6 m	9.0 m	3.76%	0.16%	3.00 g/t	17.24 g/t
	107.1 m	115.7 m	8.6 m	6.15%	0.17%	8.14 g/t	39.70 g/t
A-062	59.3 m	61.1 m	1.8 m	6.92%		4.62 g/t	17.14 g/t
A-063	113.7 m	114.3 m	0.6 m	17.55%		49.23 g/t	404.64 g/t
	129.4 m	132.8 m	3.4 m	8.86%		8.88 g/t	68.16 g/t
	138.9 m	141.5 m	2.6 m	4.69%		4.04 g/t	11.14 g/t
A-065	121.6 m	125.7 m	4.6 m	7.67%		6.08 g/t	21.56 g/t
	139.8 m	144.5 m	4.7 m	2.80%		3.55 g/t	7.64 g/t
	164.7 m	167.2 m	2.5 m	3.13%		6.95 g/t	15.44 g/t
A-066	100.6 m	101.8 m	1.2 m	22.90%		36.65 g/t	39.73 g/t
	159.8 m	168.8 m	9.0 m	6.26%		5.19 g/t	19.60 g/t
A-067	157.1 m	158.2 m	1.1 m	16.75%		10.96 g/t	
A-072	188.7 m	190.9 m	2.2 m	5.08%		3.13 g/t	
A-073	144.8 m	145.1 m	0.3 m	27.90%		32.88 g/t	
A-076	126.3 m	129.8 m	3.5 m	11.07%		3.02 g/t	
A-083	94.3 m	96.3 m	2.0 m	4.45%		3.79 g/t	10.34 g/t
	119.4 m	132.6 m	13.2 m	4.99%		2.88 g/t	15.91 g/t
A-084	130.3 m	142.8 m	12.5 m	4.58%		5.10 g/t	17.18 g/t
A-086	50.9 m	52.1 m	1.2 m	7.00%		15.07 g/t	59.60 g/t
A-103	56.4 m	59.4 m	3.0 m	5.84%		11.61 g/t	

Hole #	From	To	Interval	% Zn	% Cu	Au g/t	Ag g/t
U-02	44.9 m	45.6 m	0.7 m	2.95%		17.81 g/t	89.74 g/t
	90.4 m	91.4 m	1.0 m	13.80%		26.72 g/t	58.91 g/t
	95.8 m	108.7 m	12.9 m	5.75%		3.11 g/t	15.17 g/t
U-03	8.2 m	16.6 m	8.4 m	13.09%		6.98 g/t	20.71 g/t
	49.4 m	64.0 m	14.4 m	8.69%		3.41 g/t	17.49 g/t
U-04	17.4 m	19.7 m	2.3 m	12.77%		4.60 g/t	14.65 g/t
	85.9 m	86.6 m	0.7 m	7.05%		37.68 g/t	78.09 g/t
U-09	71.8 m	75.8 m	4.0 m	2.32%		4.32 g/t	12.43 g/t
SU-23	2.8 m	10.6 m	7.8 m	3.98%		3.33 g/t	20.54 g/t
SU-52	0.0 m	5.0 m	5.0 m	3.88%		3.01 g/t	19.82 g/t
SU-59	0.0 m	4.1 m	4.1 m	5.40%		3.51 g/t	31.04 g/t
TA-87-27	31.1 m	32.3 m	1.2 m	5.60%		17.98 g/t	37.33 g/t
TA-87-40	81.1 m	83.5 m	2.4 m	10.05%		2.96 g/t	50.05 g/t
	91.4 m	94.2 m	2.8 m	10.82%		3.23 g/t	19.19 g/t
TA-90-50	65.5 m	70.1 m	4.6 m	4.12%		6.78 g/t	10.12 g/t
	84.6 m	87.5 m	2.9 m	3.90%		3.20 g/t	
	95.5 m	106.7 m	11.2 m	10.39%	0.10%	2.54 g/t	19.26 g/t
	114.0 m	129.5 m	15.5 m	6.57%	0.10%	8.05 g/t	23.58 g/t
TA-90-51	197.4 m	200.0 m	2.6 m	5.39%	0.21%	3.52 g/t	20.10 g/t
TA-90-52	201.2 m	203.3 m	2.1 m	5.21%		5.70 g/t	11.60 g/t
TA-90-56	81.0 m	84.4 m	3.4 m	5.75%		4.06 g/t	
	164.4 m	166.9 m	2.5 m	5.23%		6.18 g/t	
	215.7 m	219.6 m	3.9 m	6.74%		3.95 g/t	
TLT-09	247.4 m	249.7 m	2.3 m			4.28 g/t	



Henderson-Portage Shear Plan Map with Depth Projection & Cross Section (Per Western Mining)



Henderson I - Total Ore Extracted

1960 – 1971

1,818,976 T @ 2.23% Cu, 0.045 oz/t Au

Henderson II - Total Ore Extracted

1960 – 1988

6,483,479 T @ 1.60% Cu, 0.041 oz/t Au

Portage Mine - Total Ore Extracted

1959 – 1997

6,212,934 T @ 1.77% Cu, 0.114 oz/t Au

- Mine package forms a single multi-lensed orebody stretching along a broad NE-striking shear with > 1 mile of strike
- Portage Mine mined to a depth of 3,600 feet
- Western mining planned to explore and develop to 5000-foot depth

At Home In North America



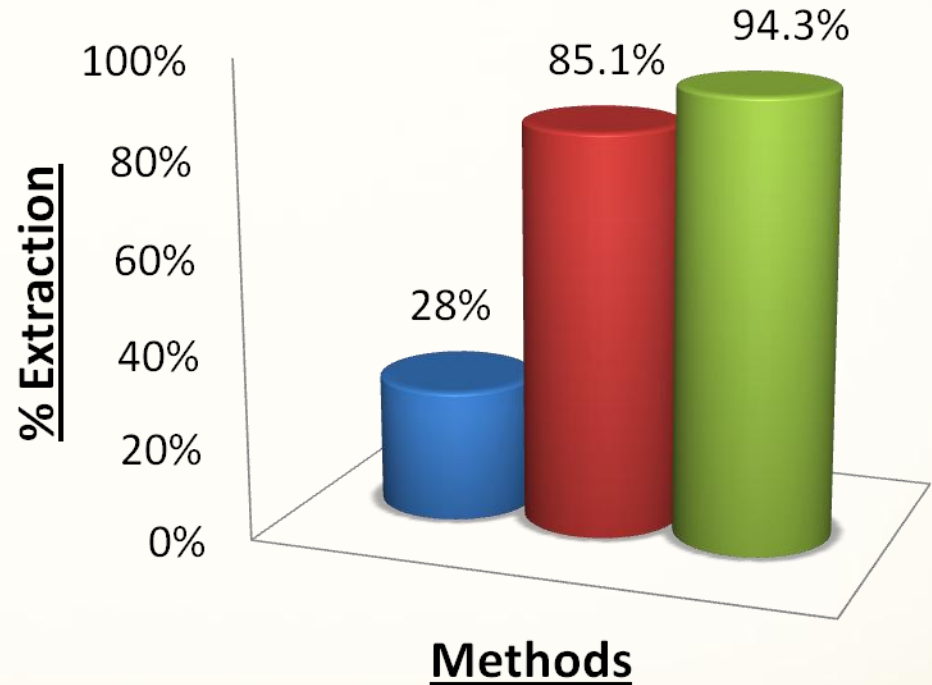
- Globex has 75 % interest and management
- Worldwide application of hydrometallurgical technology
- Gold recoveries of up to 98%
- Stabilizes arsenic residues
- Oxidizes sulphides in residues
- Low capital costs
- Low operating costs
 - No fine grinding
 - Recyclable reagents
- Extremely environmentally friendly



Client # 1: Eco Refractory Solutions

Method Benefits

- Lower Capital Cost
- Lower Operating Cost
 - No fine grind necessary
- Lower Energy cost
 - Does not require pressure leach (autoclave)
- Better Recoveries
- Environmentally Friendly
 - Arsenic Stabilized
 - Sulphides Oxidized
 - Faster Permitting



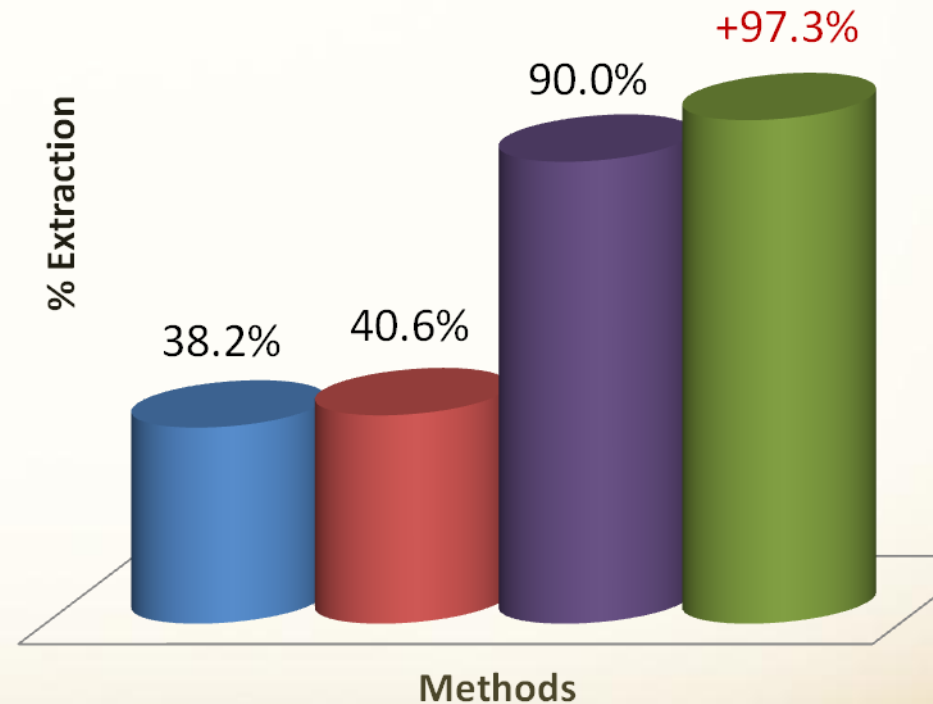
- Gravity
- Gravity, Flotation, Albion, Cyanidation
- Gravity, Flotation, Eco, Cyanidation



Client # 2: Eco Refractory Solutions

- Large Tonnage, Low Grade, Open Pittable Gold Ore
- Refractory Ore – Fine Gold in Pyrite Lattice

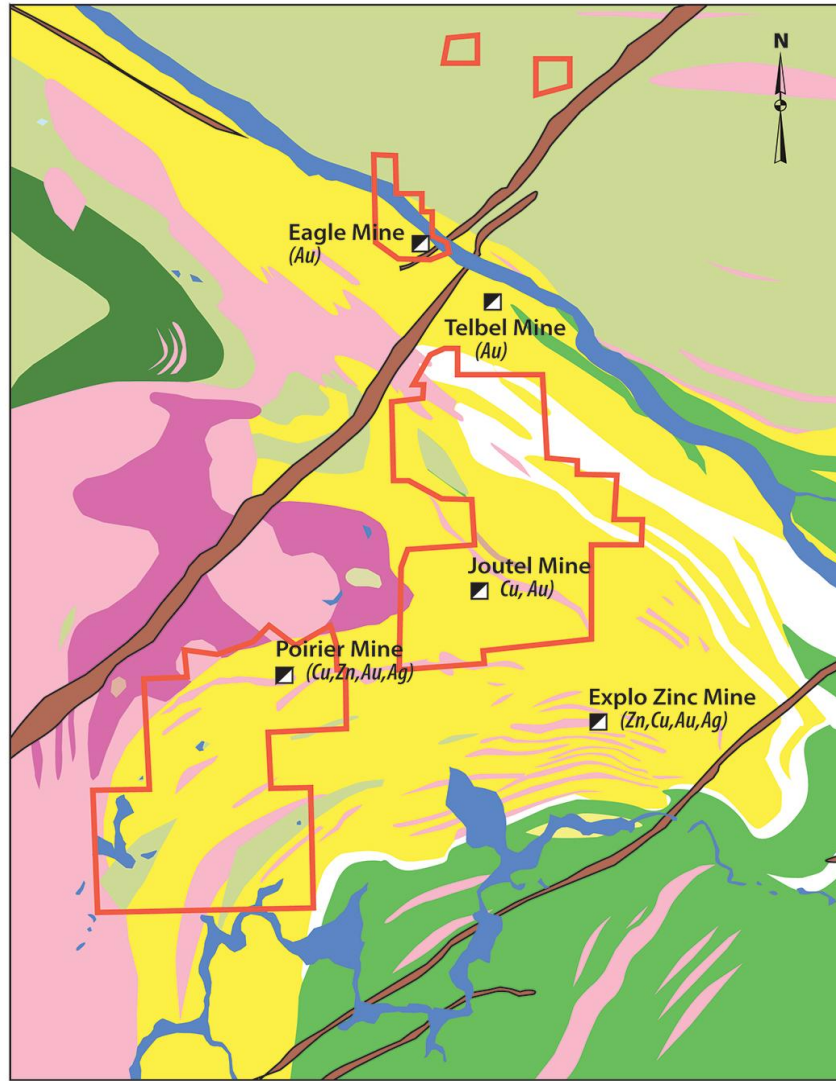
- Direct Cyanidation
- Fine Grinding, Direct Cyanidation
- Fine Grinding, *Roasting, Cyanidation
- Fine Grinding, Eco Refractory Process, Cyanidation



*Roasting requires high capital costs and energy consumption while creating numerous potentially dangerous and expensive environmental problems



Joutel Compilation Map, Qc



- Two Copper, Zinc Silver Mines (Poirier and Joutel Copper)
- One Gold Mine (Eagle Mine)
- Large exploration package including showings and zones of alteration.

LEGEND

- Granodiorite
- Rhyolite and Quartz Rhyolite Porphyry
- Basalt, Massive and Pillowed
- Tonalite
- Intermediate Lapilli Tuff and Basalt
- Intermediate Tuffs
- Andesite and Basalt, Massive and Pillowed
- Diabase

0 625 1,250 2,500 3,750 5,000
Metres

GLOBEX MINING ENTERPRISES INC.

JOUTEL PROJECT (32E08)

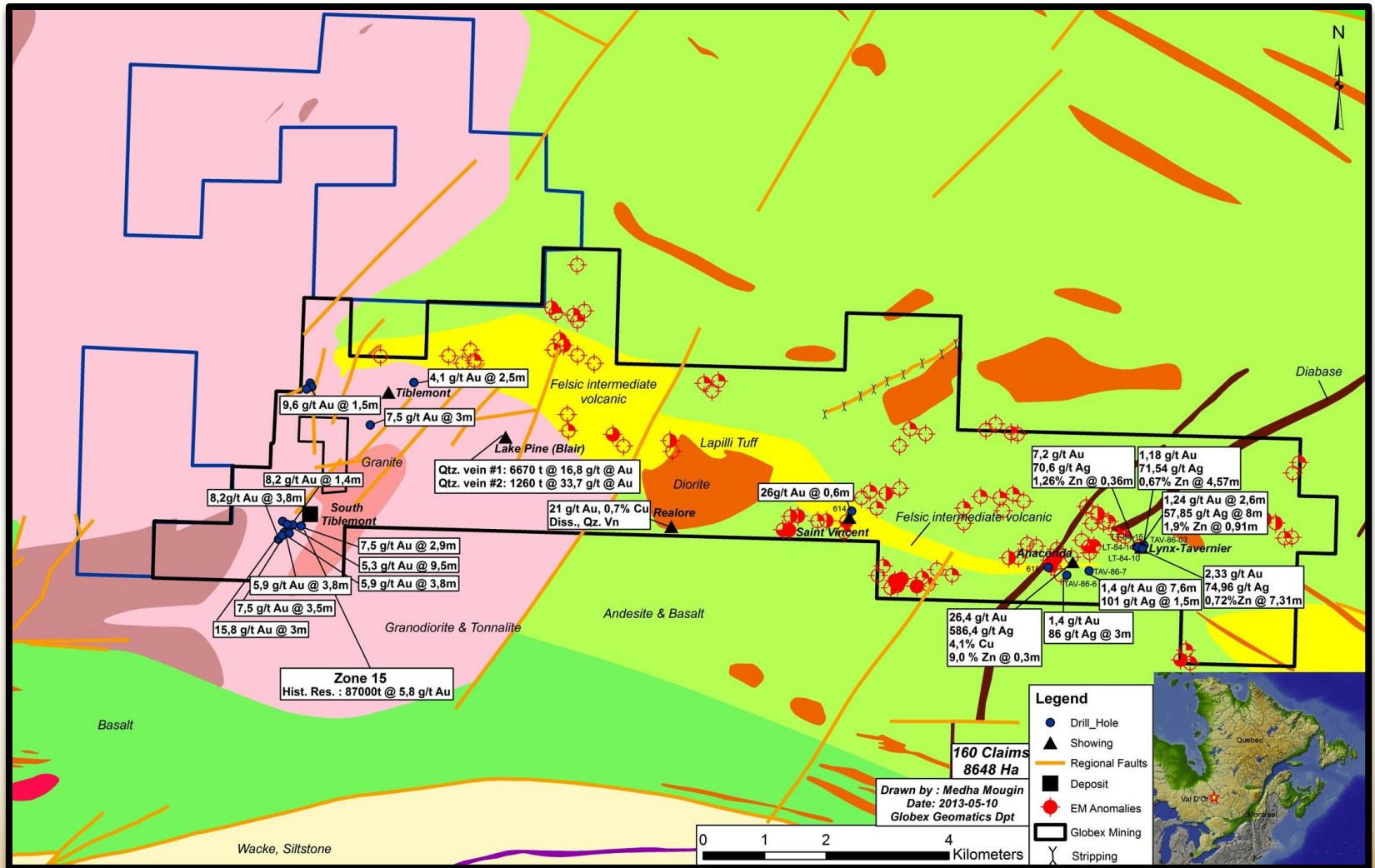
Joutel and Poirier Townships, Quebec

Date: August, 2012

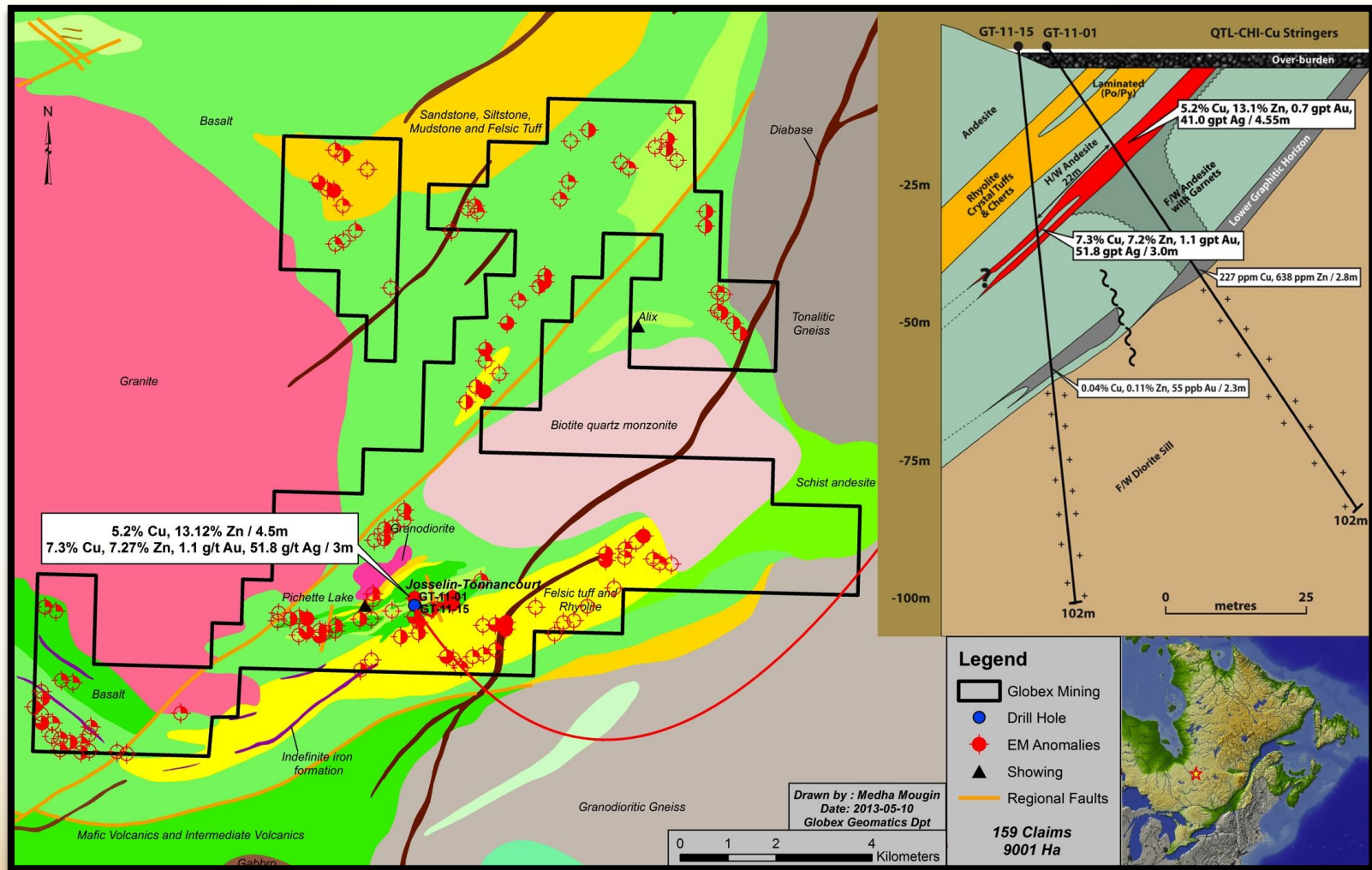


GLOBEX
Mining Enterprises Inc.

Tiblemont-Tavernier, Qc



Tonnancour Project, Qc





GLOBEX
Mining Enterprises Inc.

THANK YOU

MERCI

DANKE

GRAZIE

MEEGWETCH