



**GLOBEX**  
Mining Enterprises Inc.



# A Mineral Property Bank

*Exploration – Diversification – Mining – Royalties*

TSX: **GMX** – OTCQX: **GLBXF** – FSE: **G1MN**

September 2021

Except for historical information, this presentation may contain certain “forward-looking statements”. These statements may involve a number of known and unknown risks and uncertainties and other factors that may cause the actual results, level of activity and performance to be materially different from the expectations and projections of Globex.

No assurance can be given that any events anticipated by the forward-looking information will transpire or occur, or if any of them do so, what benefits Globex will derive from them.

A detailed discussion of the risk factors relating to Globex is available in Globex’s Annual Information Form, available at [www.sedar.com](http://www.sedar.com) and at the Corporation’s web site at [www.globexmining.com](http://www.globexmining.com).

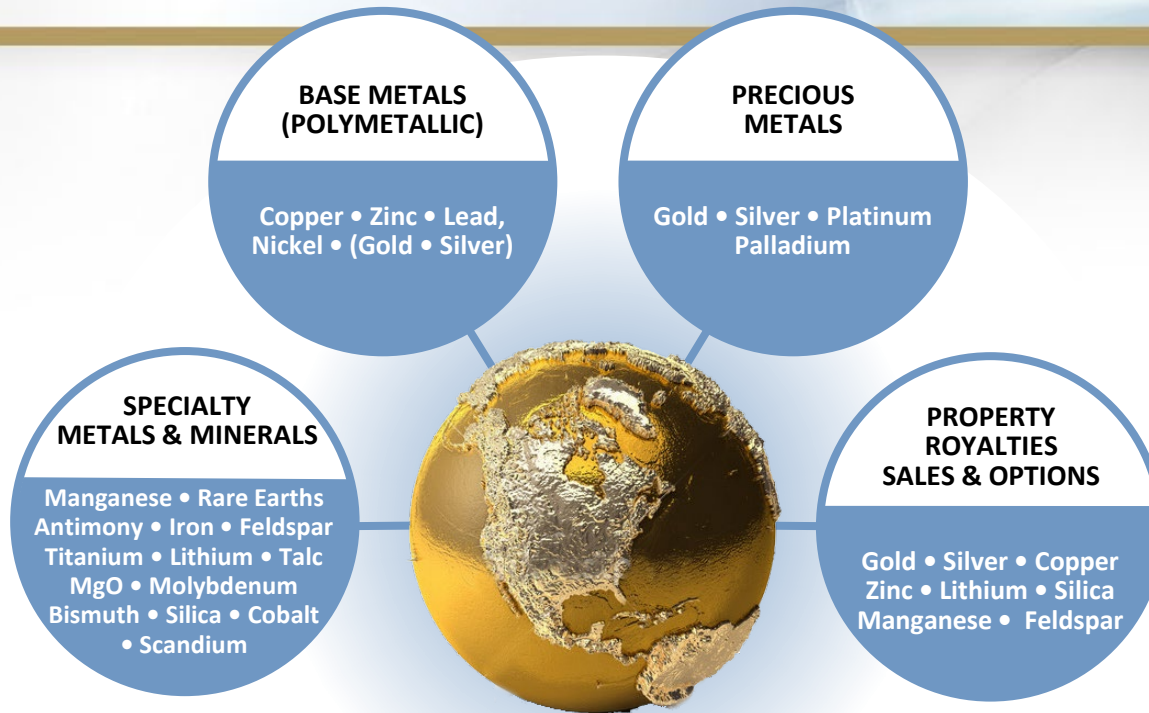
References to reserves or resources if NI 43-101 or JORC conformable will be indicated as such. If not so indicated, they are historical and have not been verified by Globex’s professional staff and should not be relied upon.

**F**OCUS

ON THE

**V**ALUE





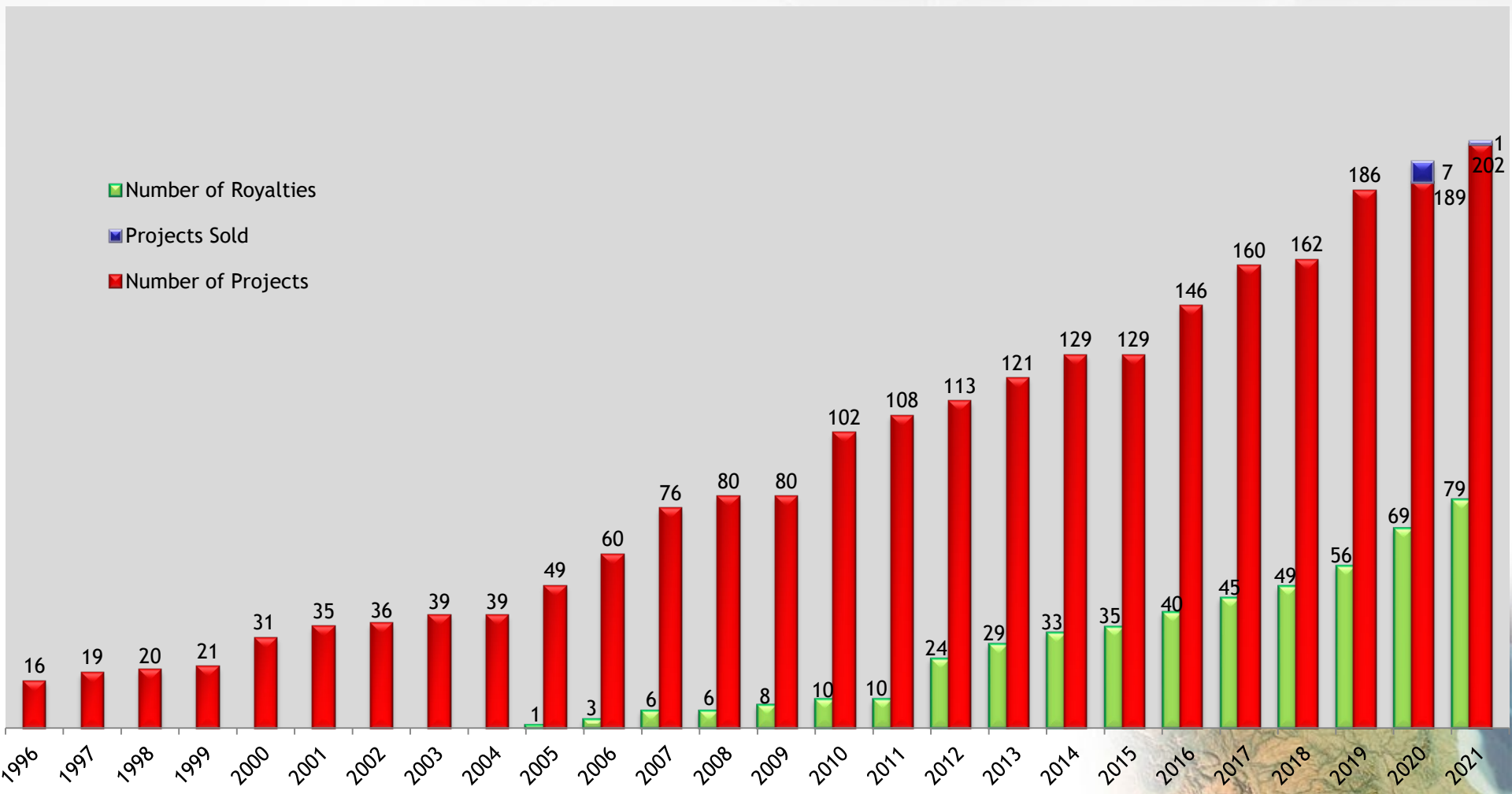
- ▶ Diversified
- ▶ Low political risk – focused in Eastern Canada, Germany and the U.S.A.
- ▶ Revenue from Royalties, Options and Joint Ventures
- ▶ No debt



- Mineral Property Bank/Incubator
- Specializing in acquisitions
- Asset upgrading through exploration and intellectual input
- Revenue through Options, Sales and Royalties
- Income = less share dilution, increased exploration expenditure, less shareholder risk, avoiding debt
- Increased property portfolio value



# Total Number of Project & Royalty Acquisitions By Year





## GLOBEX – THE BASICS

### History of Minimal Share Dilution

- # Shares Issued (no rollbacks) 55,272,917
- Shares, Fully Diluted 58,012,817
- 11.06% owned by Management
- Professional board and management
  - 3 senior geologists, 1 mining accountant and 1 senior finance professional)
- Listings

**GMX** (Canada) **Toronto Stock Exchange**

**G1MN** (Germany) **Frankfurt Stock Exchange**  
(Frankfurt, Stuttgart, Berlin, Munich, Tradegate and Lang & Schwarz)

**GLBXF** (USA) **OTCQX International**

# Management and Directors

- Jack Stoch      President and CEO - + 40 years of experience  
P.Geo, Accredited Director
  
- Ian Atkinson      Director - + 40 years of experience  
P.Geo, M.Sc., A.K.C., D.I.C.  
Currently Director Kinross, until 2015 President Centerra Gold  
Former senior positions: Hecla, Battle Mountain Gold, Hemlo Gold Mines,  
Noranda Group
  
- Johannes  
H.C. Van Hoff      Director – International Financial Professional, Chairman NS Gold Corp.  
Former senior positions – Chairman & Senior Executive Officer Soros Funds  
Ltd., PVF Pension Funds, Paribas Capital Markets, Bankers Trust. Roles  
included: Manager, Senior Risk Manager, Deputy Head of Global Equity  
Derivations, Managing Director, M&A Arbitrage, Derivatives Arbitrage and  
Capital Investments.
  
- Dianne Stoch      Director - Accredited Director  
Retired. Served +30 years as Globex CFO and Corporate Secretary.  
Previously Senior Analyst, Revenue Planner - Noranda Mines for 18+ years
  
- Chris Bryan      Director – Retired Geologist and Mining Analyst  
Previously VP, Director and Portfolio Manager Bolton Tremblay  
Mining Analyst /Portfolio Manager Caisse Depot Placement Quebec





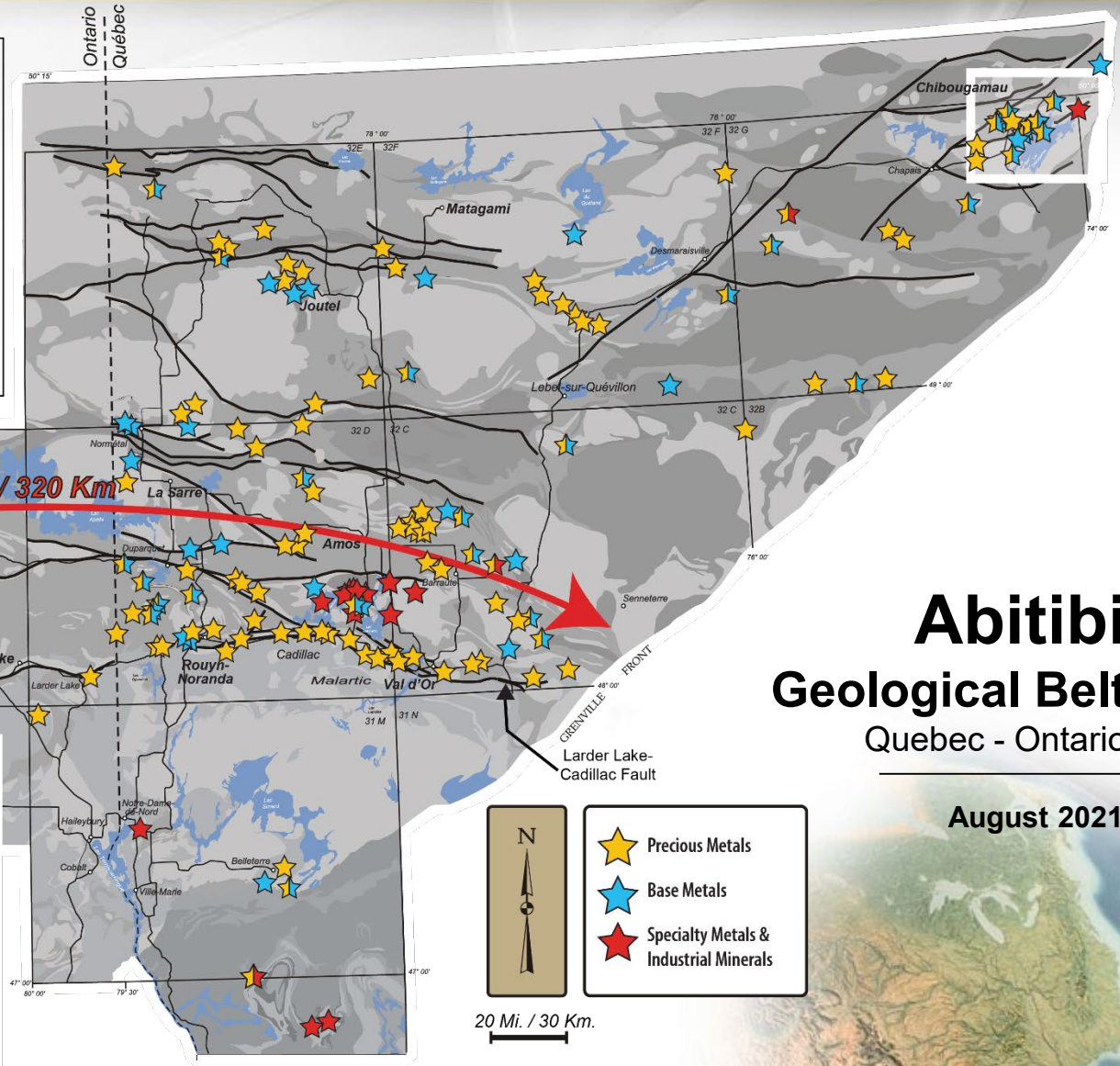
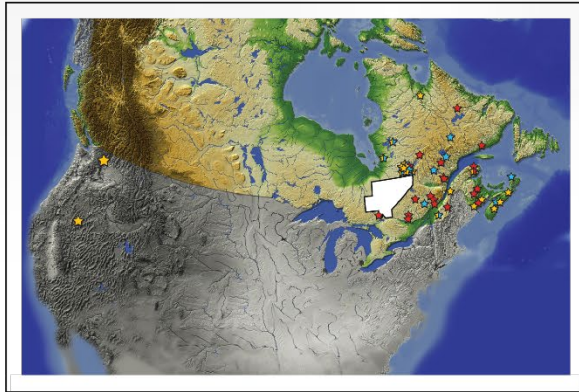
Numerous Owned Properties and Royalties

Assets include over 40 Former Mines

202	Projects
104	Precious Metals <ul style="list-style-type: none"> <li>• Gold, Silver, Platinum, Palladium</li> </ul>
61	Base Metals & Polymetallic <ul style="list-style-type: none"> <li>• Copper, Zinc, Lead, Nickel (Gold, Silver)</li> </ul>
37	Specialty Metals & Minerals <ul style="list-style-type: none"> <li>• Talc, Iron, Lithium, Beryl, Magnesium Oxide, Manganese, Mica, Molybdenum, Rare Earths, Titanium, Silica, Bismuth, Pyrophyllite, Vanadium, Antimony, Feldspar, Cobalt, Scandium, Diamond</li> </ul>
79	Royalties
5	Active options <ul style="list-style-type: none"> <li>• Cash payments</li> <li>• Share payments</li> <li>• Exploration &amp; Development expenditures</li> <li>• Gross Metal Royalty</li> </ul>
54	Historical or NI 43-101 Resources

Note: Some properties have been combined due to proximity or infill staking

# Diversified Mineral Holdings



## Abitibi Geological Belt Quebec - Ontario

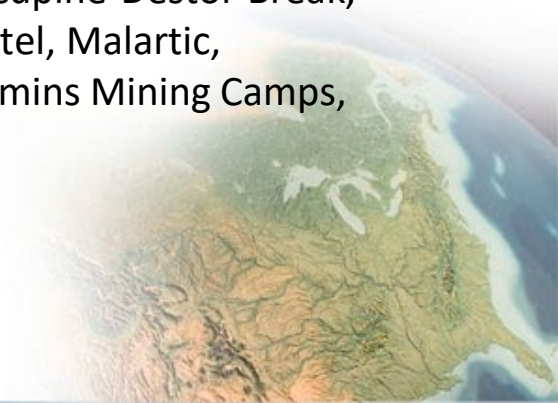
August 2021





All GLOBEX properties possess one or more key attributes:

- Historical or NI 43-101 Resource
- Drill intersections of Economic Interest
- Past production
- Mineralized showings or drill targets
  - geophysical, geochemical, geological
- Location on major ore localizing structures or in prolific mining camps
  - ex. Cadillac Break, Porcupine-Destor Break, Noranda, Val d'Or, Joutel, Malartic, Chibougamau and Timmins Mining Camps, etc.



- Acquiring diversified high potential assets



Francoeur/Arntfield/Lac Fortune Gold Mines



Very high grade GOLD values at surface in Waswanipi area



Multiple Cu-Ni zones over 6 km strike length



Manganese and Vanadium New Brunswick and Quebec



High grade Rare Earth property



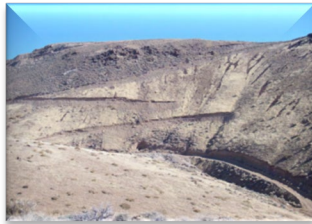
Inferred 100,000 oz Gold Resource New Brunswick



Four lithium projects in Quebec



Scandium/Rare Earth Property in Quebec



## ■ MEDIUM TERM POTENTIAL

### ■ ***Rocmec1 (Russian Kid) Gold Mine, Quebec***

Recently purchased by Orminex, the gold mine is located west of Rouyn-Noranda. Resource of 570,000 t Measured and Indicated grading 6.32 g/t Au (119,000 oz. Au) and 1,512,400 t Inferred grading 7.4 g/t Au (359,600 oz. Au). 5% GMR on first 25,000 oz. Au, 3% GMR thereafter.

### ■ ***Authier Lithium Royalty (Sayona Mining)***

Definitive Feasibility Study done. Initial Mine Life +14 years outlined, IRR 33%, +31,000 m drilled, resource 20.94 Mt. Potential projected approval 2022-2023? Recently purchased nearby mill.

### ■ ***Fayolle Gold Deposit, Quebec***

Pit Constrained Indicated Resource: 405,600 t grading 5.42 g/t Au

Underground Indicated Resource: 300,800 t grading 4.17 g/t Au

Calculated using \$1,300 US/oz. Au, 111,010 oz. Au

Potential production approval 2022, Globex 2% NSR.

### ■ ***Bell Mountain Au, Ag***

Eros Resources has been studying putting our Au, Ag deposit in Nevada into production. Globex holds an Advance Royalty and a 3% GMR. Open pit. Heap Leach. Construction may start in 2022-2023?

### ■ ***Magusi Cu, Zn, Au, Ag Deposit***

Production Scenario completed by third party.

Road, power, etc. in place. Ramp and portal started. Bulk sample permit in place.

## ■ Exploration

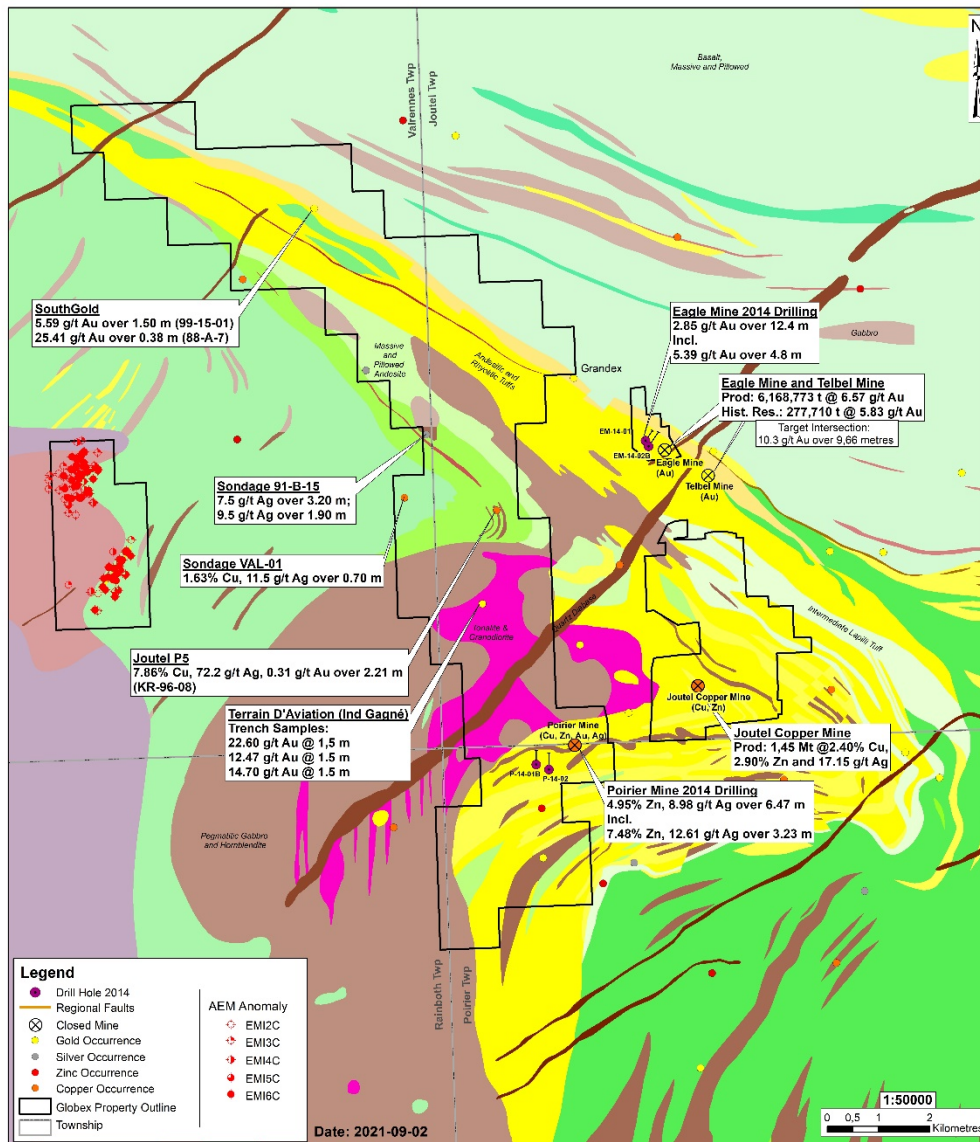
■ By Globex Mining Enterprises Inc.

■ By Renforth, Tres-Or, Quebec Precious Metals, Nyrstar, Eldorado Gold Lamaque, Rogue Resources, O3 Resources, Great Thunder, Manganese X Energy, Galway Metals, Opawica, EnerSpar Corp., Vanadium One Energy, Sayona Mining, Pershimex/Dundee Precious Metals, Osisko Mining, Falco Resources, Radisson Resources, Eros Resources, Yamana, Wesdome, First Energy Metals, Chibougamau Independent Mines etc., IAMGold, Orminex.





# Joutel Compilation Map, Quebec



- Two former Copper, Zinc, Silver Mines (Poirier and Joutel Copper)
- One Former Gold Mine (Eagle Mine)
- Large exploration package including mines, showings and zones of alteration
- Known Resources:
  - Joutel Mine:** 242,800 t at 10.37% Zn
  - Poirier Mine:**
    - West & Q Zones – 1,400,863 T @ 1.24% Cu and 9.77% Zn
    - East Lens – 300,000 T @ 8.06% Zn
    - Main Zone – 534,000 T @ 2.5% Cu
  - Eagle Gold Mine:** 277,710 t @ 5.83 g/t Au
  - + 11 km of Eagle/Telbel Gold Mines Horizon

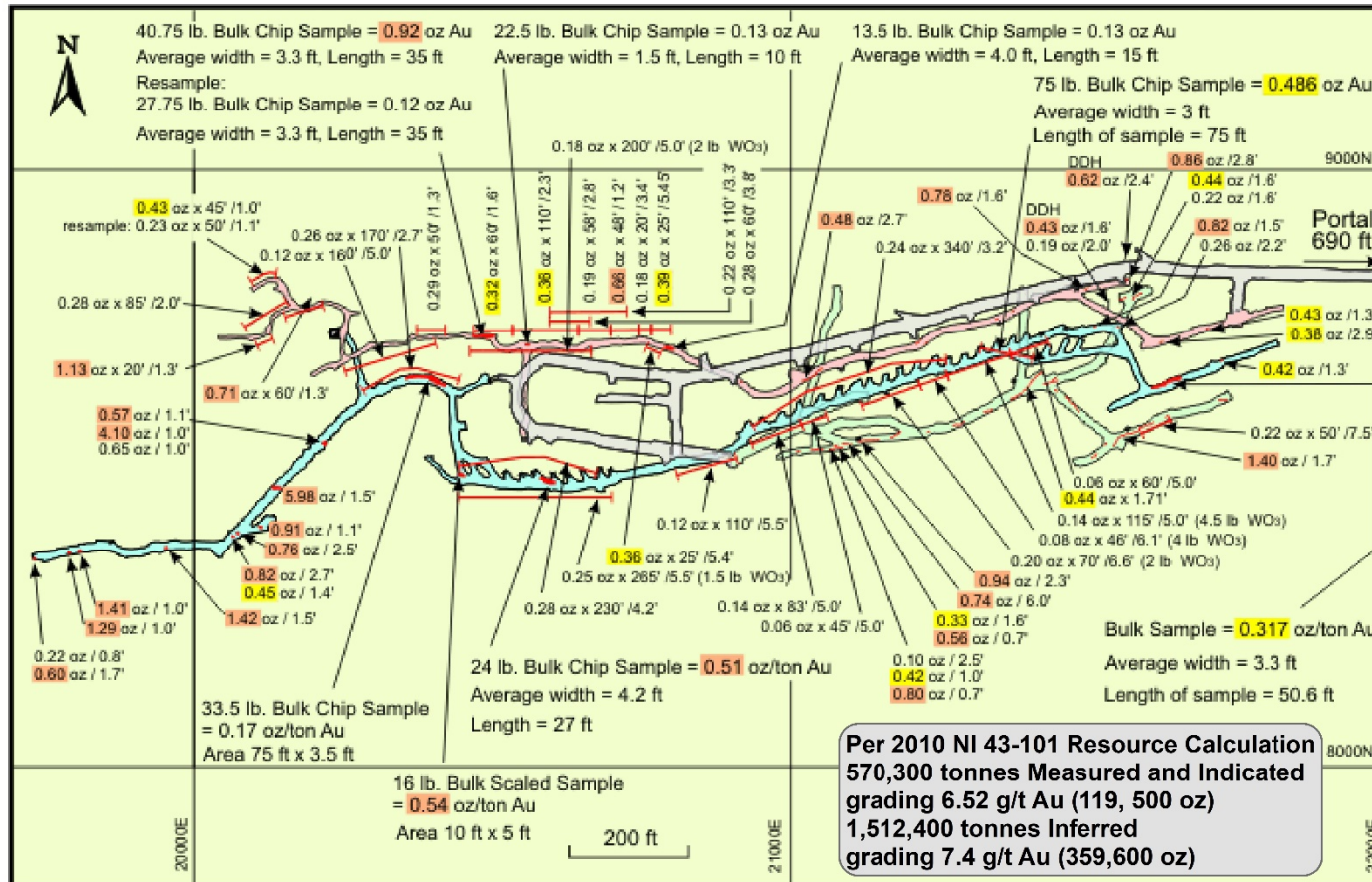
Note: All resources are historical and do not conform to current NI 43-101 standards and thus should not be relied upon

**GLOBEX MINING ENTERPRISES INC.**

**JOUTEL PROJECTS (32E07-08-09-10)**  
Joutel, Poirier, Rainboth and Valrennes Twps, QC

August 2021

# Russian Kid Property, Quebec



- Ramp
- 150 ft Level
- 300 ft Level
- 425 ft Level
- Shaft
- Tungsten
- WO<sub>3</sub>
- +0.50 oz Au
- 0.30 to 0.50 oz Au
- 0.28 oz x 230' / 4.2'
- Grade oz/ton Au/ Length (Ft)/ Width (ft)



**GLOBEX MINING ENTERPRISES INC.**

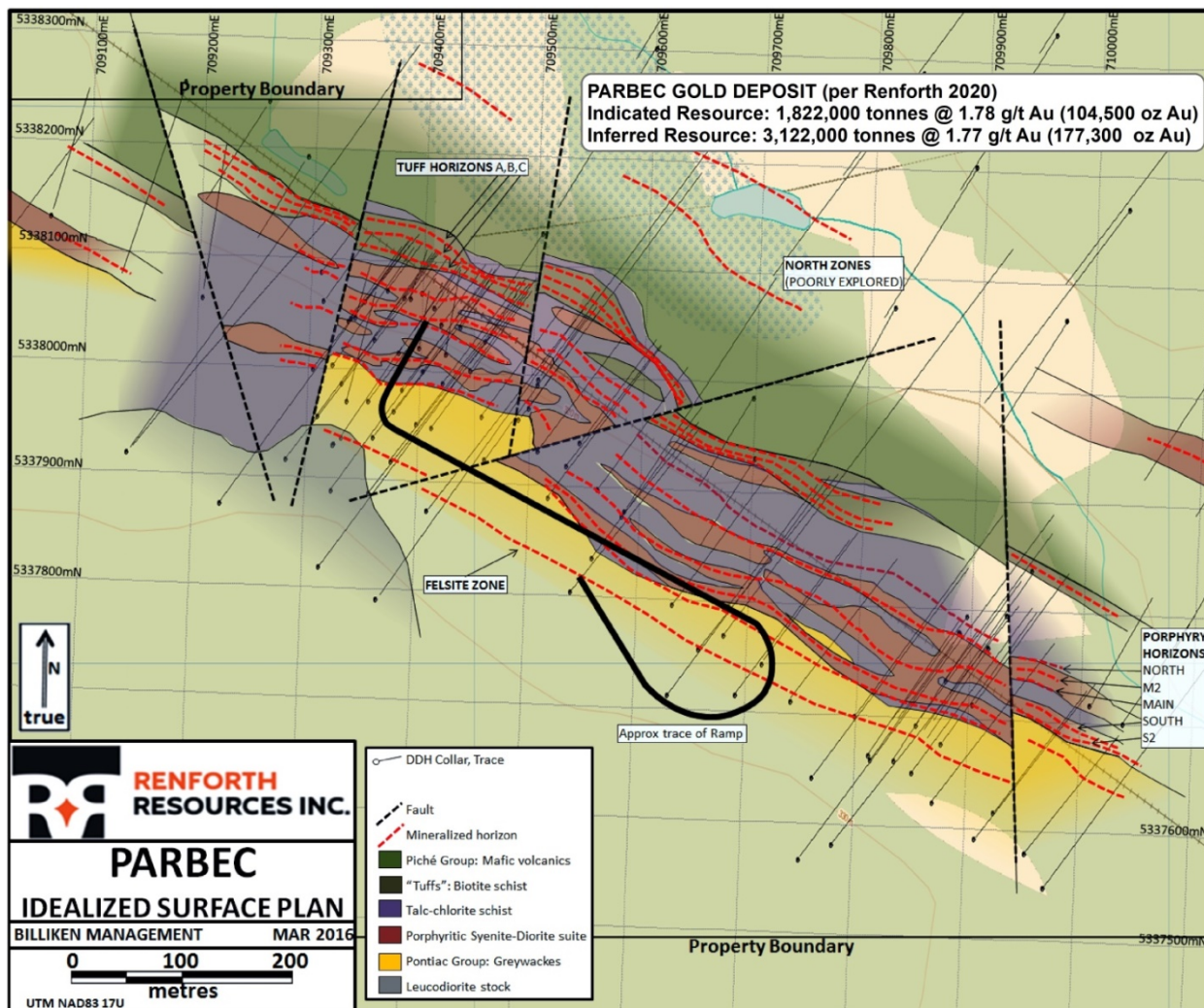
**RUSSIAN KID (ROCMEC 1) GOLD DEPOSIT**  
**Composite Level Plan**  
32 D/03, Dasserat Twp, Quebec

\* Ref: Technical Report Resource update, Rocmec 1 Mineral Deposit, Abitibi West Quebec, Canada for Rocmec Mining Inc. written by SGS Canada - May 21, 2010



# Parbec Royalty Property

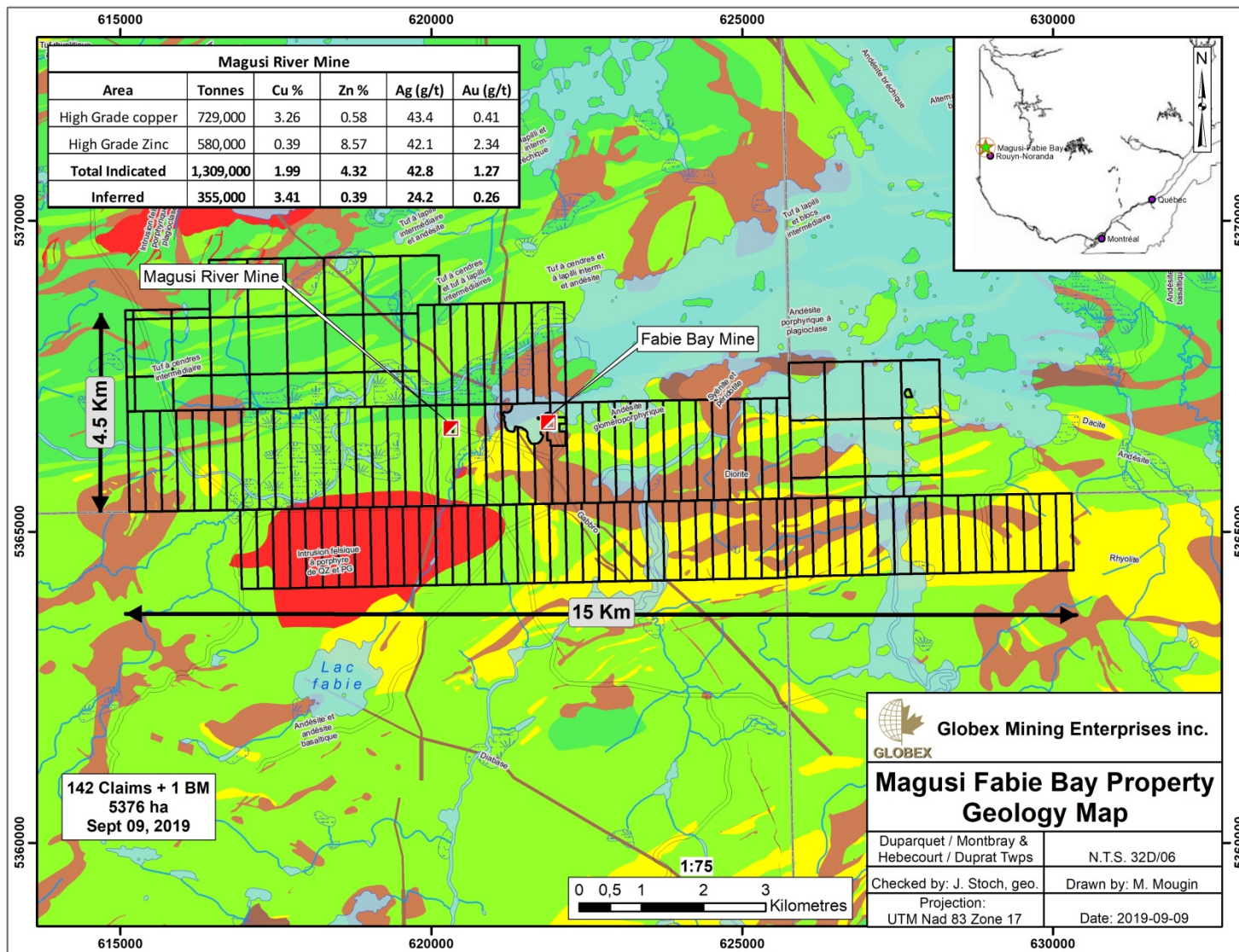
Renforth Resources Inc.



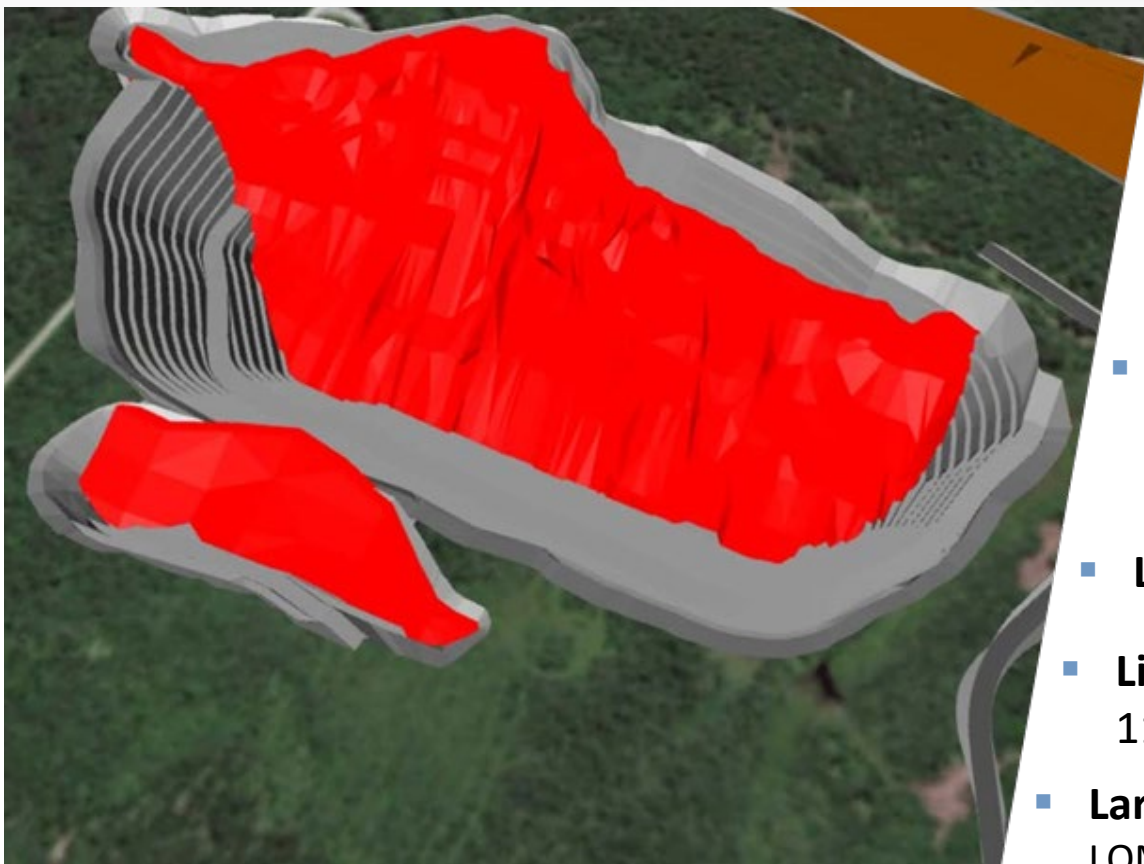
- Located approximately 5 km along strike to the Northwest of the large Canadian Malartic Gold Mine
- Underground access via a 580 m ramp
- April 2020 Mineral Resource:
  - 104,500 oz Au Indicated Resource
  - 177,300 oz Au Inferred Resource
- Globex retains 3% GMR



# Magusi-Fabie Bay Property, Quebec



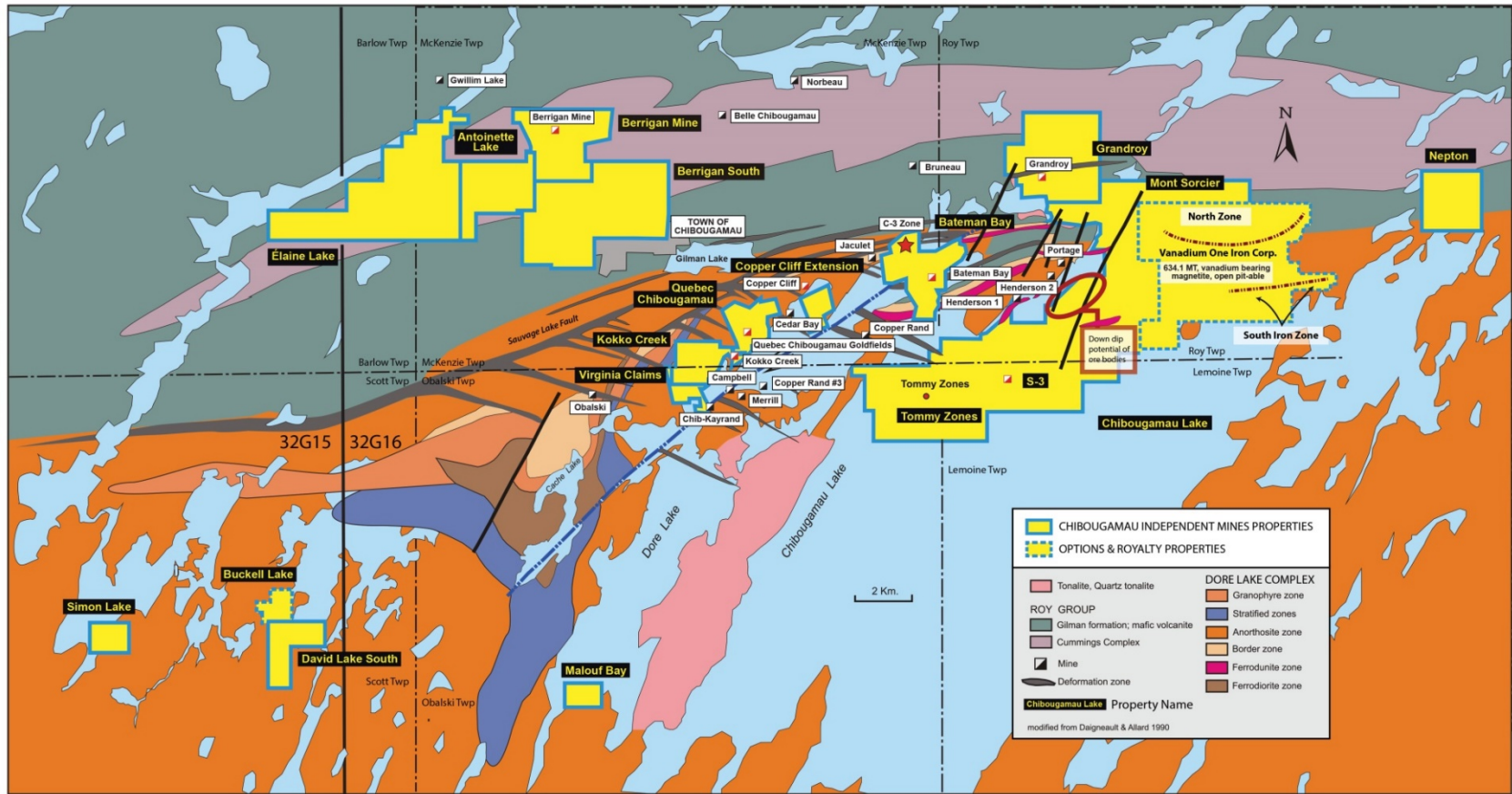
## Simple, Open-Cut Mining Operation



- **Measured, Indicated and Inferred resources**  
20,940,000 t @ 1.01% Li<sub>2</sub>O
- **Simple mining method**  
Truck and shovel operation
- **Competitive mining costs**  
CAD \$460 /tonne  
US \$675 /tonne Sale Price
- **Low development capex of \$89.9 M**
- **Life of mine – 14 years**  
115,000 t/yr 6% Li<sub>2</sub>O concentrate
- **Large, thick tabular body**  
LOM waste to ore ratio 6.95:1
- **Purchased nearby mill**

Sayona Mining Limited Investor Presentation (see disclaimer)

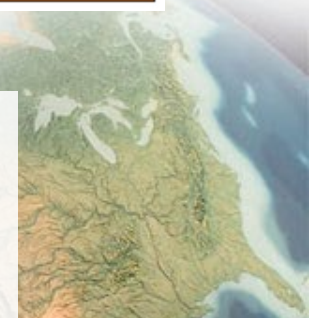
# Chibougamau Area Royalty Property, Quebec



- 5 former copper-gold mines
- 3 extensions of copper-gold mines
- 2 unmined deposits (1 Cu/Zn and 1 Au/Zn/Ag)
- Mont Sorcier + 1 billion tonnes, iron/ vanadium deposits  
 Inferred Resource: 953.7Mt grading 32.8% Magnetite, 64% Fe, 0.6% V<sub>2</sub>O<sub>5</sub>  
 Indicated Resource 113.5Mt grading 30.9% Magnetite, 65.3%Fe, 0.6% V<sub>2</sub>O<sub>5</sub>  
 Globex Royalty 1% GMR on Iron  
 Chibougamau Independent Royalty 2% GMR on Iron and Vanadium
- Numerous drill-ready targets
- Globex Royalty 3% GMR (other than Mont Sorcier)

## Historical Production

**47.6 Million Tons  
Copper & Gold**



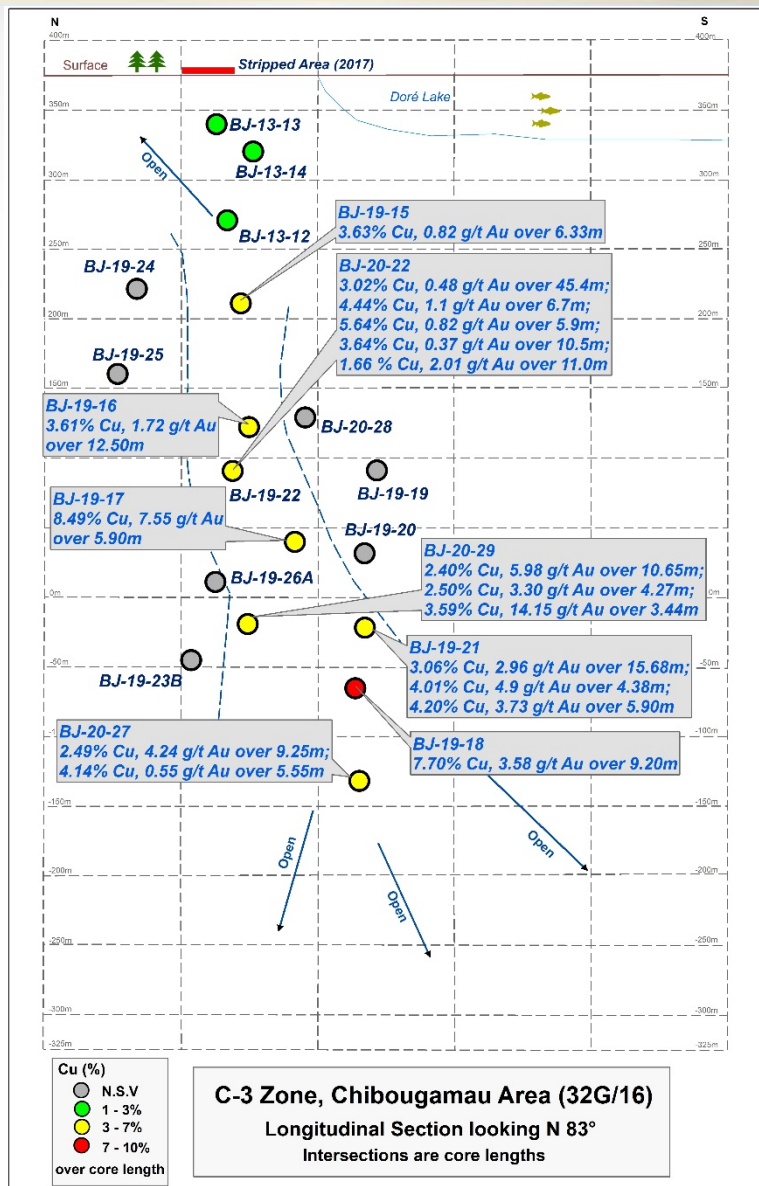
## Significant Gold Intersections Within Previous Drilling Surface diamond drill holes Berrigan Property 32G16

Hole #	From	To	Interval	% Zn	% Cu	Au g/t	Ag g/t
A-005	131.4 m	140.2 m	8.8 m	5.70%		6.96 g/t	
A-010	97.3 m	105.2 m	7.9 m	4.43%		4.94 g/t	25.36 g/t
A-016	18.9 m	21.2 m	2.3 m	1.51%		6.43 g/t	
	76.2 m	77.7 m	1.5 m	3.45%		8.91 g/t	
A-061	91.6 m	100.6 m	9.0 m	3.76%	0.16%	3.00 g/t	17.24 g/t
	107.1 m	115.7 m	8.6 m	6.15%	0.17%	8.14 g/t	39.70 g/t
A-062	59.3 m	61.1 m	1.8 m	6.92%		4.62 g/t	17.14 g/t
A-063	113.7 m	114.3 m	0.6 m	17.55%		49.23 g/t	404.64 g/t
	129.4 m	132.8 m	3.4 m	8.86%		8.88 g/t	68.16 g/t
	138.9 m	141.5 m	2.6 m	4.69%		4.04 g/t	11.14 g/t
A-065	121.6 m	125.7 m	4.6 m	7.67%		6.08 g/t	21.56 g/t
	139.8 m	144.5 m	4.7 m	2.80%		3.55 g/t	7.64 g/t
	164.7 m	167.2 m	2.5 m	3.13%		6.95 g/t	15.44 g/t
A-066	100.6 m	101.8 m	1.2 m	22.90%		36.65 g/t	39.73 g/t
	159.8 m	168.8 m	9.0 m	6.26%		5.19 g/t	19.60 g/t
A-070	157.1 m	158.2 m	1.1 m	16.75%		10.96 g/t	
A-072	188.7 m	190.9 m	2.2 m	5.08%		3.13 g/t	
A-073	144.8 m	145.1 m	0.3 m	27.90%		32.88 g/t	
A-076	126.3 m	129.8 m	3.5 m	11.07%		3.02 g/t	
A-083	94.3 m	96.3 m	2.0 m	4.45%		3.79 g/t	10.34 g/t
	119.4 m	132.6 m	13.2 m	4.99%		2.88 g/t	15.91 g/t
A-084	130.3 m	142.8 m	12.5 m	4.58%		5.10 g/t	17.18 g/t
A-086	50.9 m	52.1 m	1.2 m	7.00%		15.07 g/t	59.60 g/t
A-103	56.4 m	59.4 m	3.0 m	5.84%		11.61 g/t	

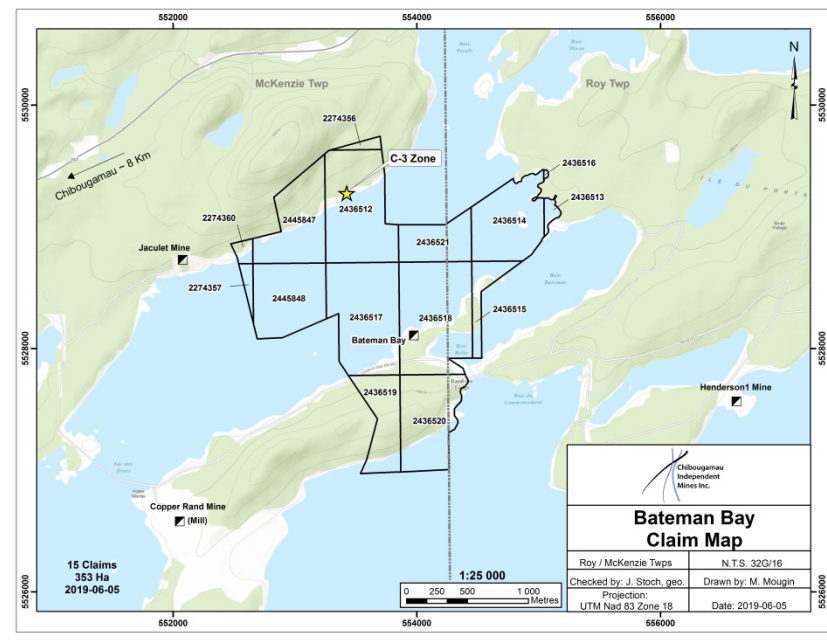
Hole #	From	To	Interval	% Zn	% Cu	Au g/t	Ag g/t
U-02	44.9 m	45.6 m	0.7 m	2.95%		17.81 g/t	89.74 g/t
	90.4 m	91.4 m	1.0 m	13.80%		26.72 g/t	58.91 g/t
	95.8 m	108.7 m	12.9 m	5.75%		3.11 g/t	15.17 g/t
U-03	8.2 m	16.6 m	8.4 m	13.09%		6.98 g/t	20.71 g/t
	49.4 m	64.0 m	14.4 m	8.69%		3.41 g/t	17.49 g/t
U-04	17.4 m	19.7 m	2.3 m	12.77%		4.60 g/t	14.65 g/t
	85.9 m	86.6 m	0.7 m	7.05%		37.68 g/t	78.09 g/t
U-09	71.8 m	75.8 m	4.0 m	2.32%		4.32 g/t	12.43 g/t
SU-23	2.8 m	10.6 m	7.8 m	3.98%		3.33 g/t	20.54 g/t
SU-52	0.0 m	5.0 m	5.0 m	3.88%		3.01 g/t	19.82 g/t
SU-59	0.0 m	4.1 m	4.1 m	5.40%		3.51 g/t	31.04 g/t
TA-87-27	31.1 m	32.3 m	1.2 m	5.60%		17.98 g/t	37.33 g/t
TA-87-40	81.1 m	83.5 m	2.4 m	10.05%		2.96 g/t	50.05 g/t
	91.4 m	94.2 m	2.8 m	10.82%		3.23 g/t	19.19 g/t
TA-90-50	65.5 m	70.1 m	4.6 m	4.12%		6.78 g/t	10.12 g/t
	84.6 m	87.5 m	2.9 m	3.90%		3.20 g/t	
	95.5 m	106.7 m	11.2 m	10.39%	0.10%	2.54 g/t	19.26 g/t
	114.0 m	129.5 m	15.5 m	6.57%	0.10%	8.05 g/t	23.58 g/t
TA-90-51	197.4 m	200.0 m	2.6 m	5.39%	0.21%	3.52 g/t	20.10 g/t
TA-90-52	201.2 m	203.3 m	2.1 m	5.21%		5.70 g/t	11.60 g/t
TA-90-56	81.0 m	84.4 m	3.4 m	5.75%		4.06 g/t	
	164.4 m	166.9 m	2.5 m	5.23%		6.18 g/t	
	215.7 m	219.6 m	3.9 m	6.74%		3.95 g/t	
TLT-09	247.4 m	249.7 m	2.3 m			4.28 g/t	

# C-3 Copper/Gold Zone (Bateman Bay)

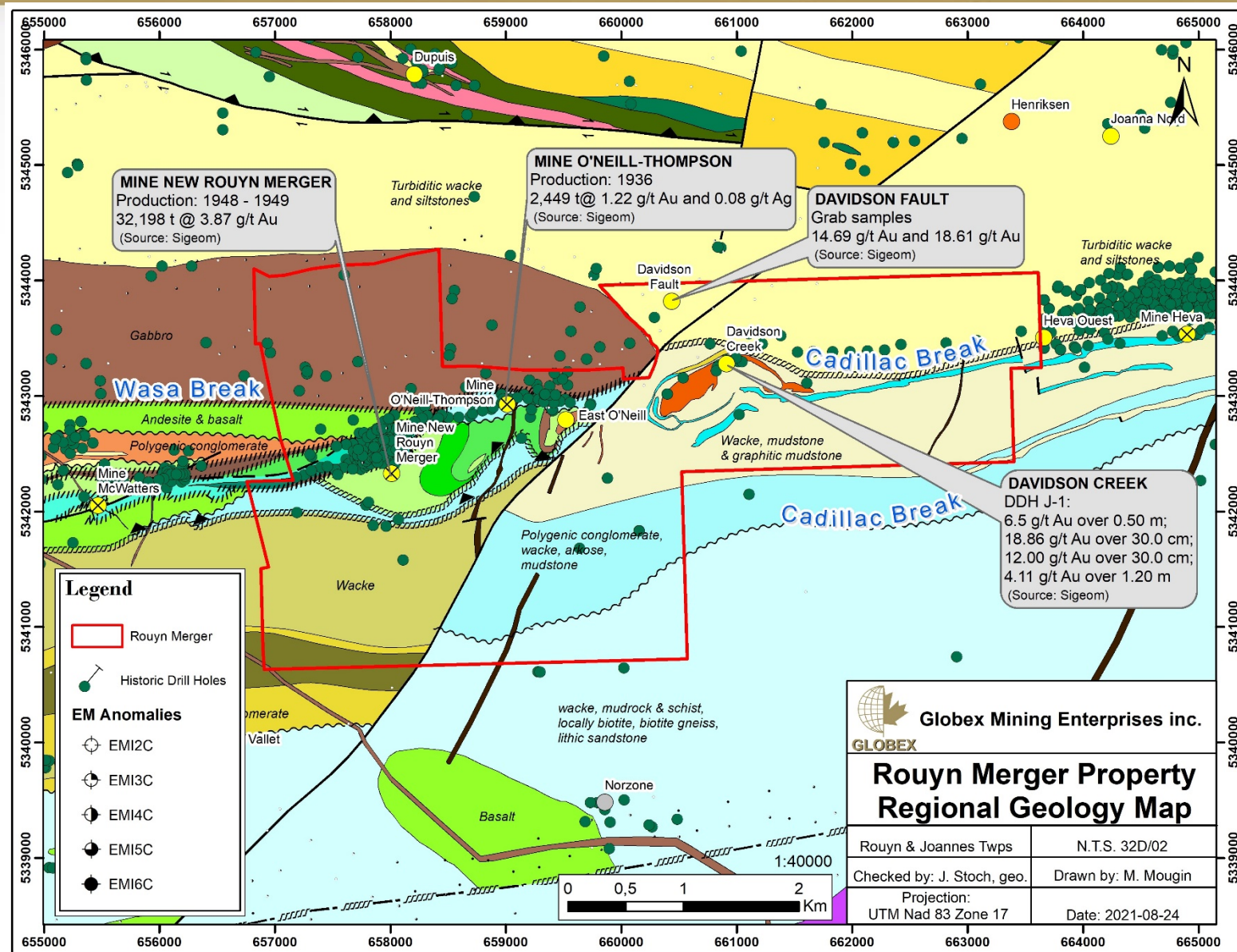
McKenzie & Roy Townships, Quebec (NTS 32G/16)



- Chibougamau Mining District
- Intercepted from surface to 450m (±1,500 ft) vertical
- High grade copper and gold (some silver and cobalt)
- Open to depth and along strike (both directions)
- Easily accessible by road and near the Town of Chibougamau



# Rouyn Merger Property, Quebec



# Montalembert Project, Quebec

Photo # 1

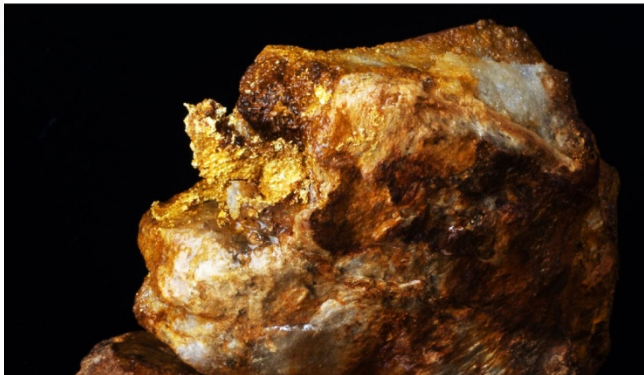
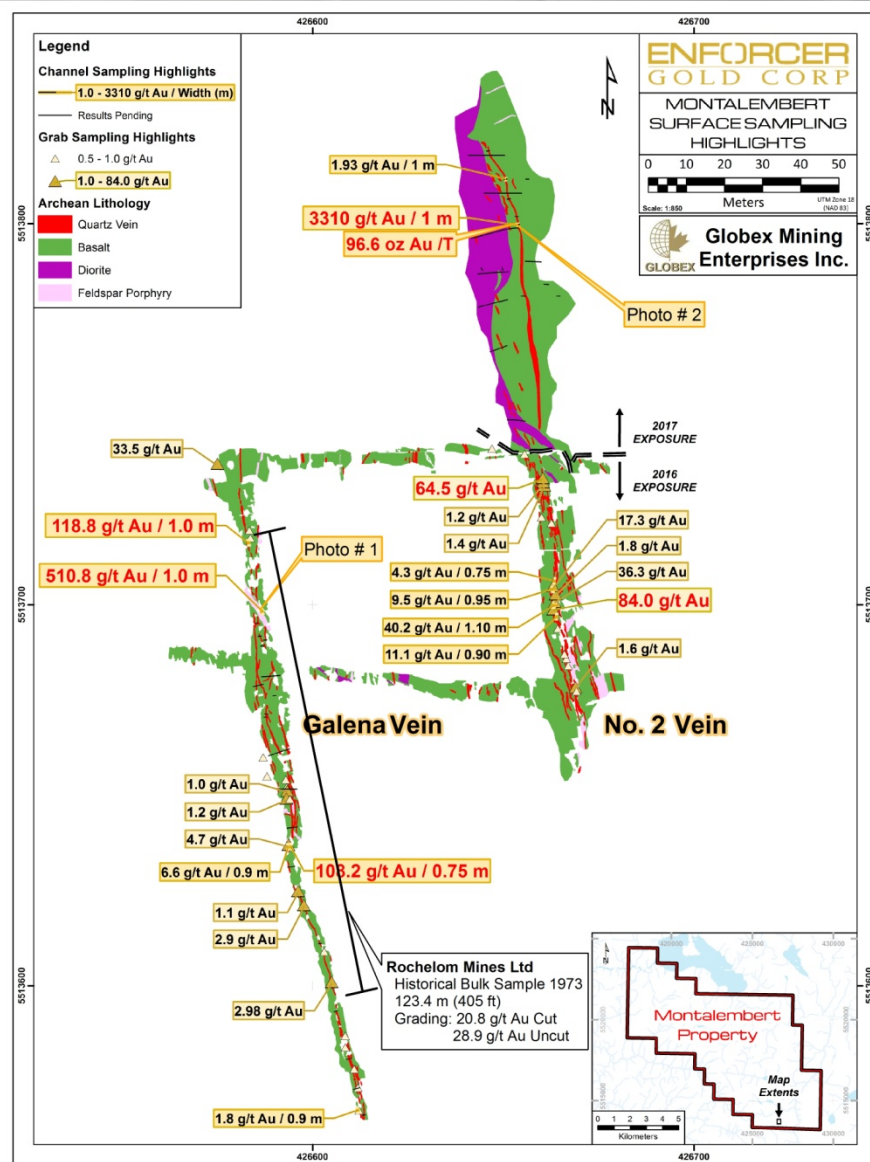
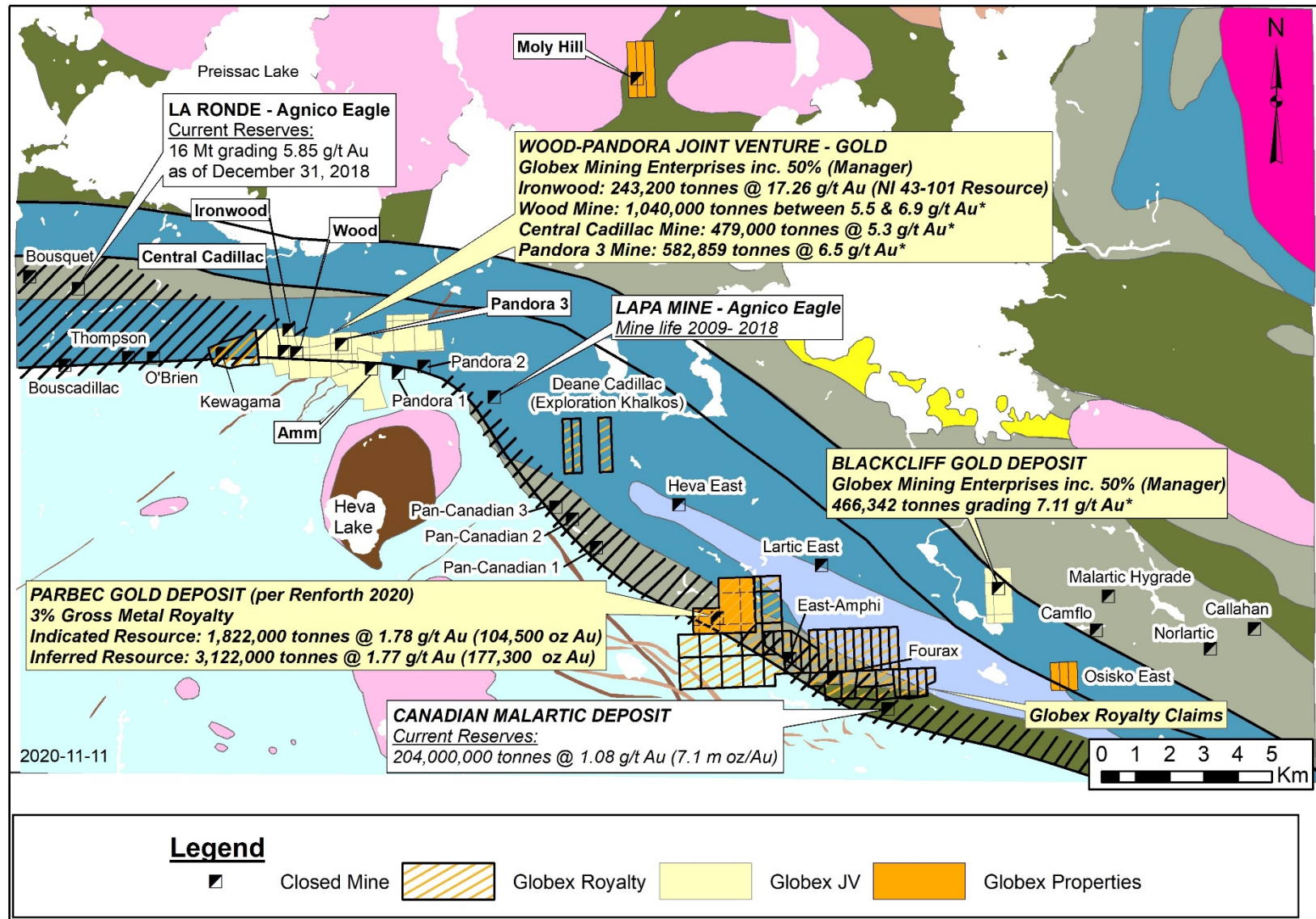


Photo # 2





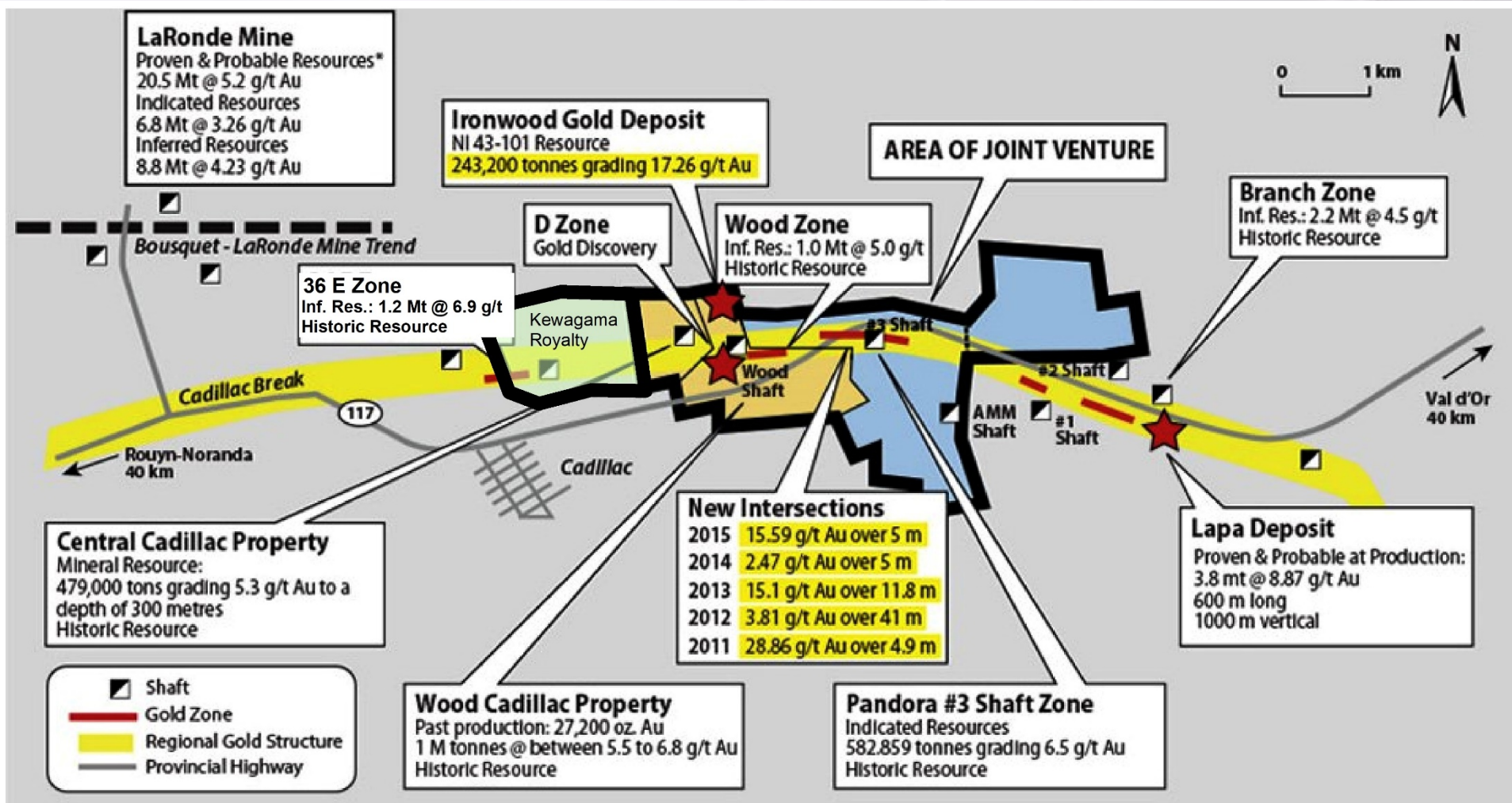
# Cadillac-Malartic Mining Camp, Quebec



\* Historic resources have not been verified by Globex's geologists and should not be relied upon.

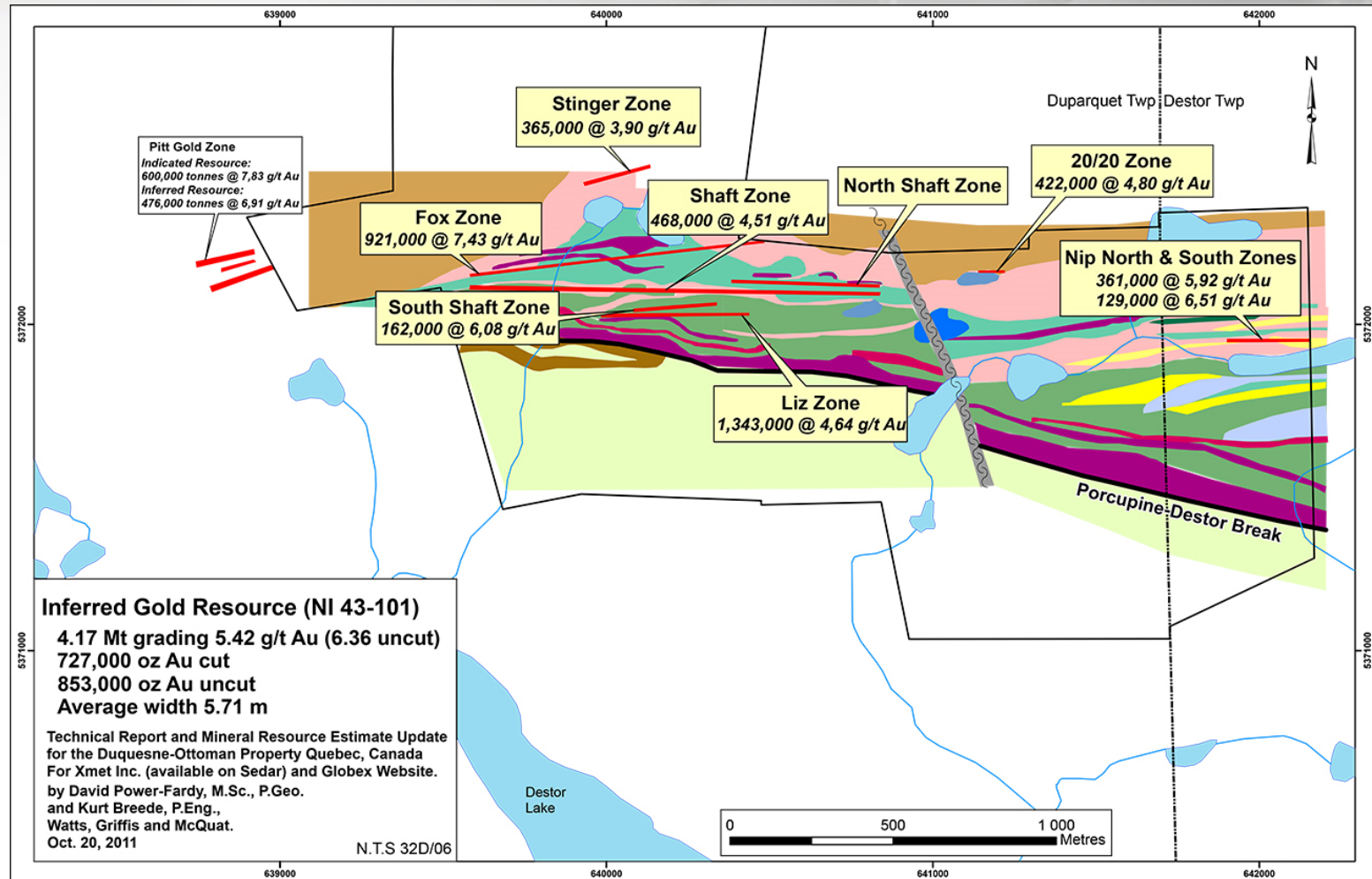
# Cadillac Gold Camp, Quebec

(Wood-Pandora Joint Venture)

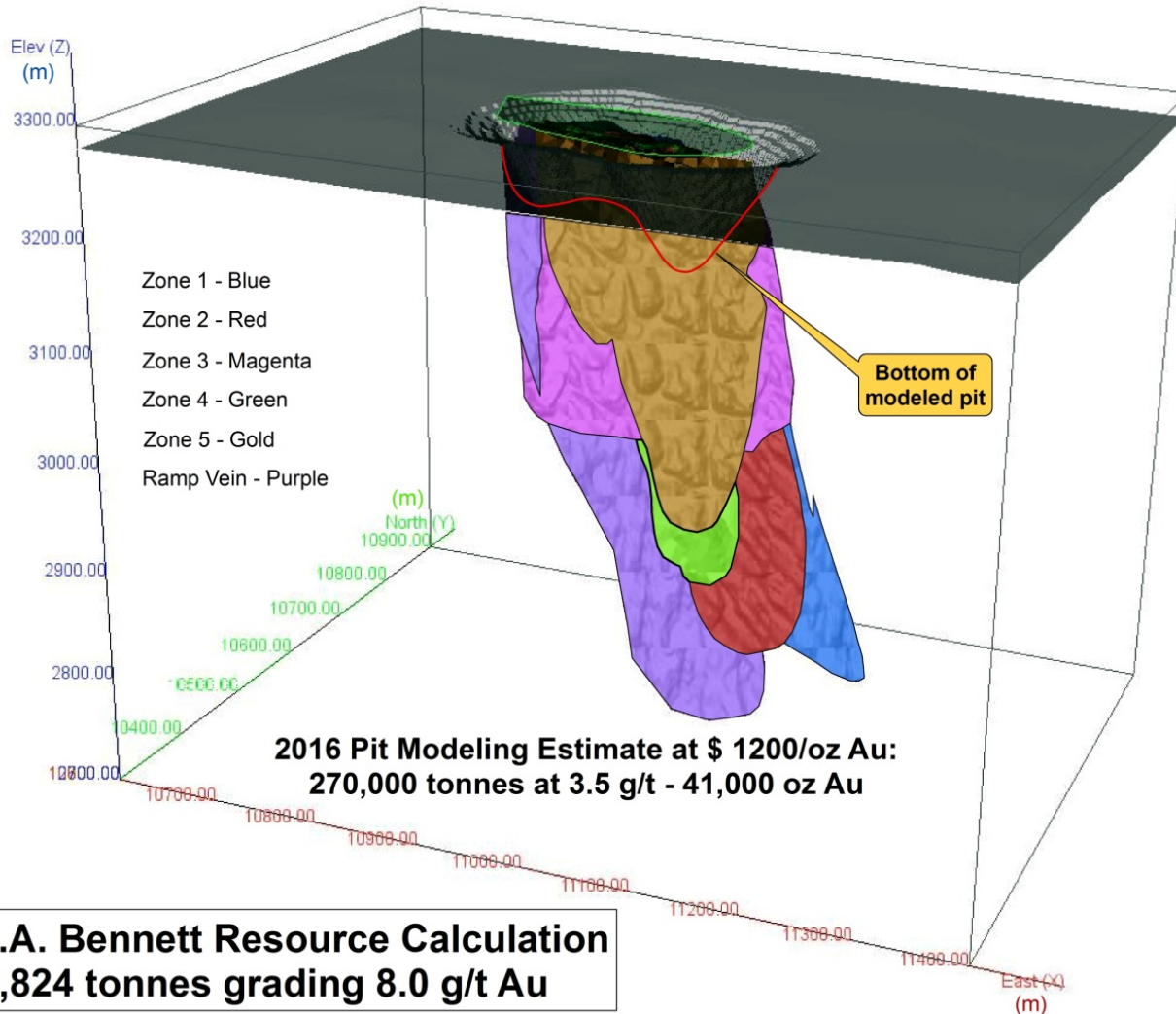


\*Ref. Agnico Eagle Mines

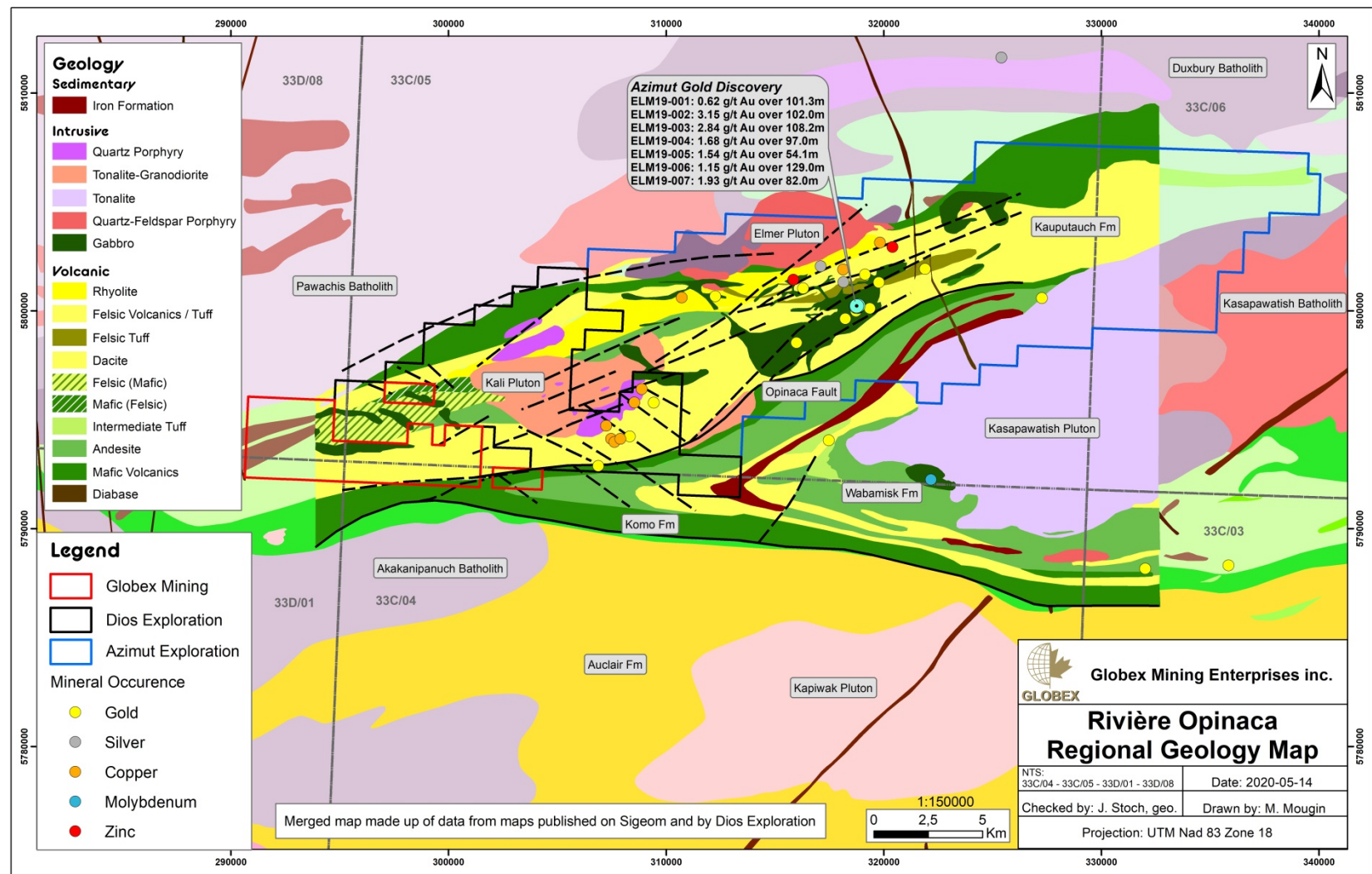
# Duquesne West, Quebec (50%)

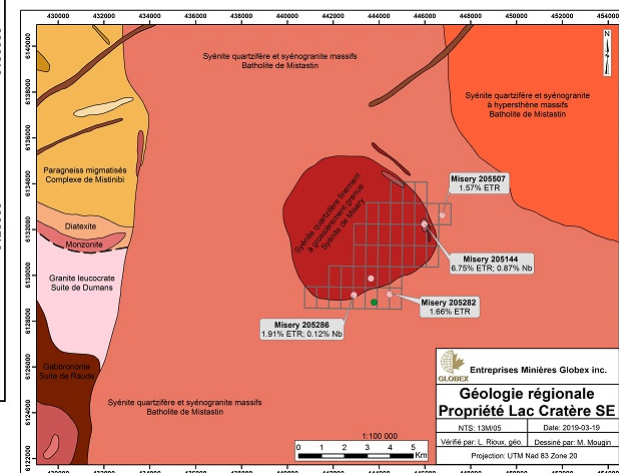
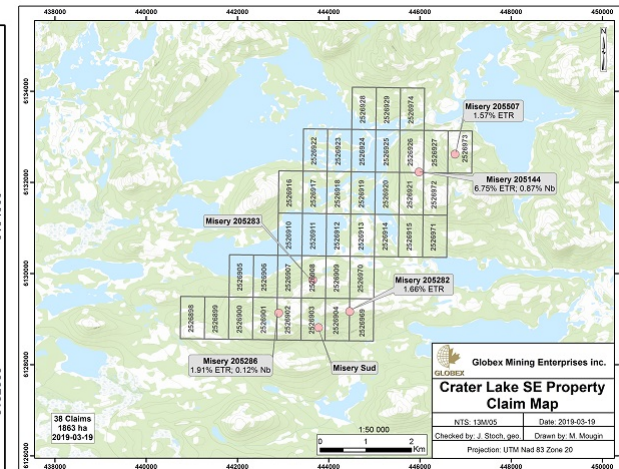
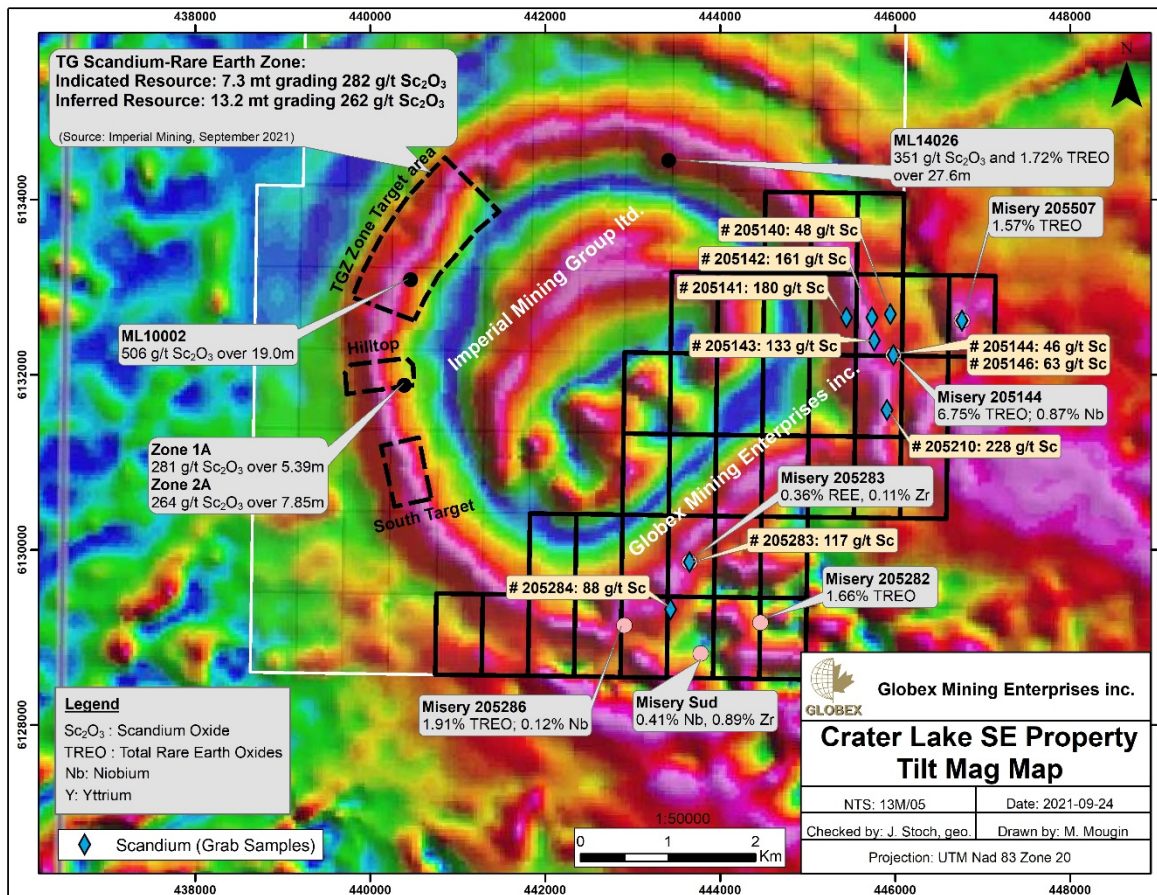


- Multiple gold zones adjoining and related to the Porcupine Destor Break
- Many gold zones open to depth



Source: RJK Exploration Ltd. 2016. Historical Non NI 43-101 Resources

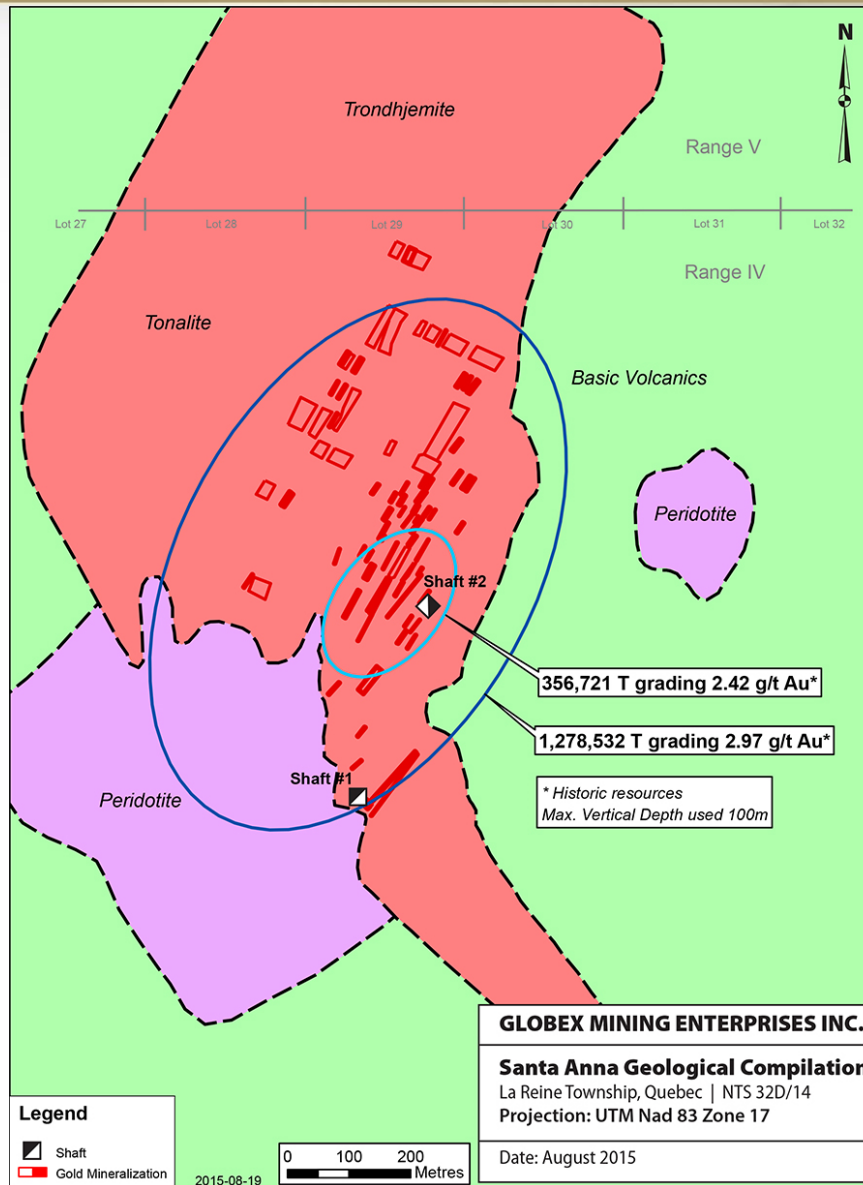




## Scandium Property

Used in aluminium alloys in the automotive, aerospace, fuel-cell industries and sports equipment.  
Facilitates welding of aluminium, eliminating rivets.

# Santa Anna Property, Quebec

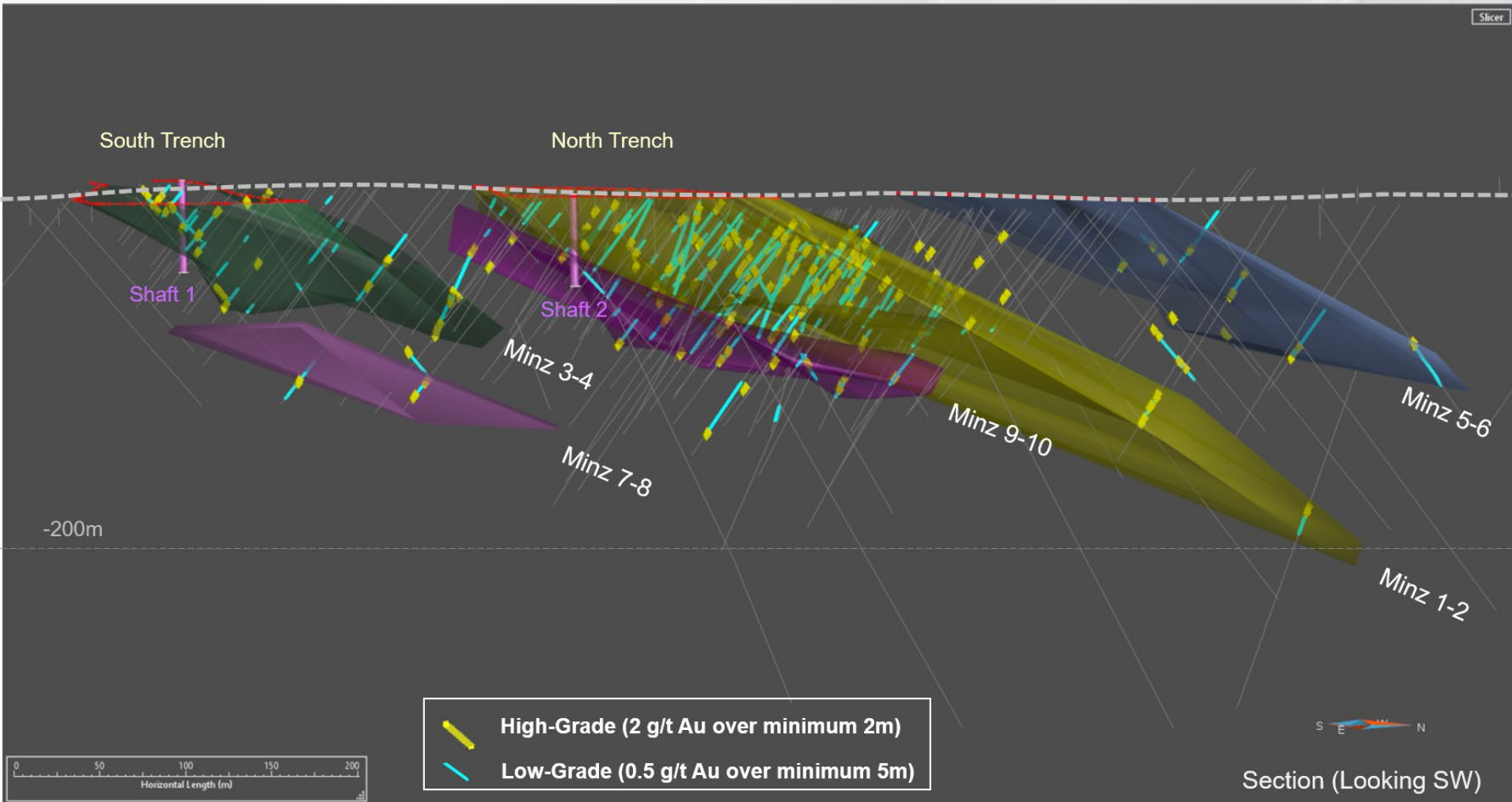


- Surface exposed gold in high silica zones
- Potential open pit?
- Potential fluxing ore?
- Accessible by paved and gravel, all season roads
- Minimal strip ratio
- Coarse free gold



# Santa Anna Property

## High grade & low grade mineralization

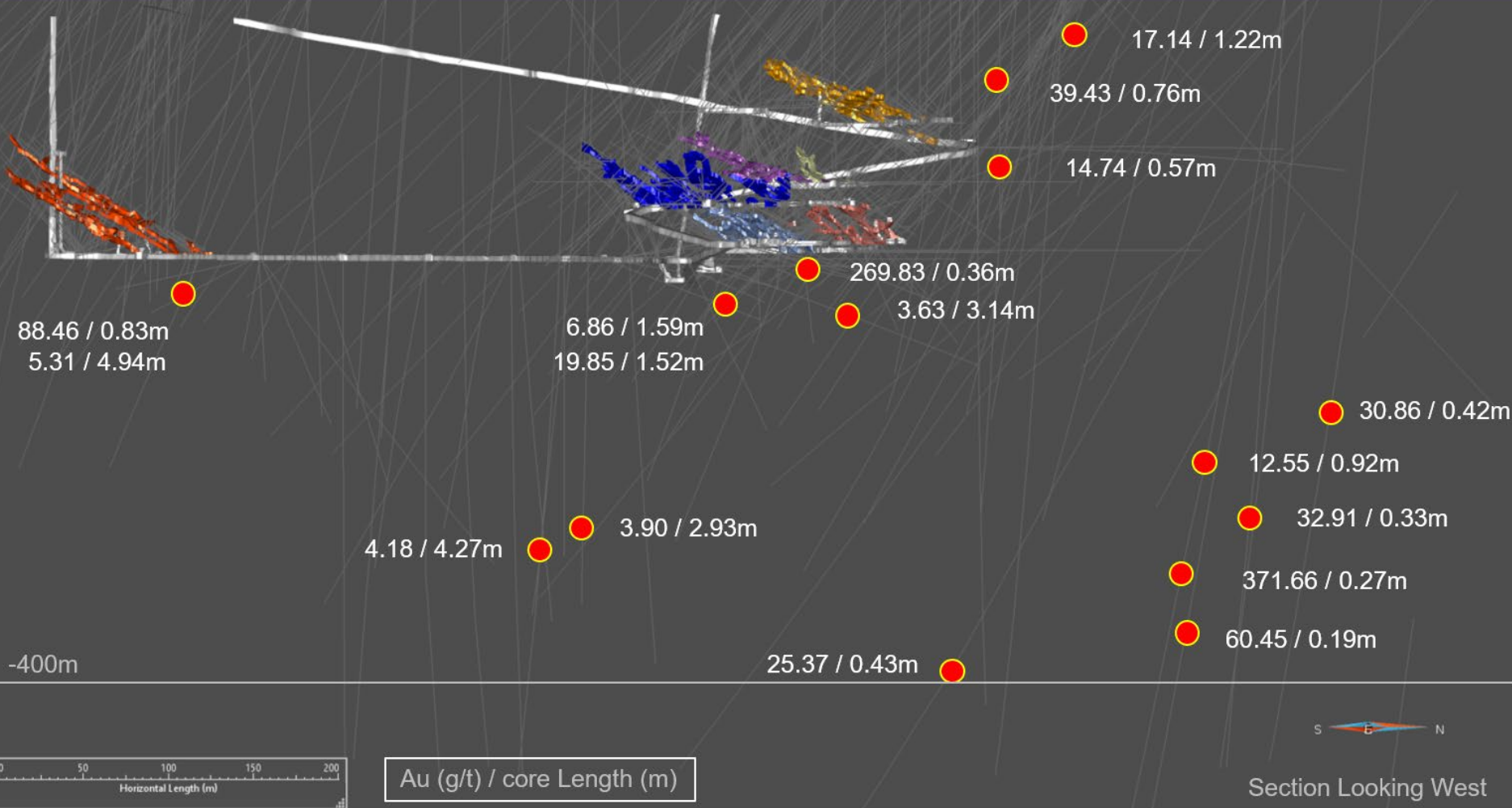




# Wrightbar Property, Quebec

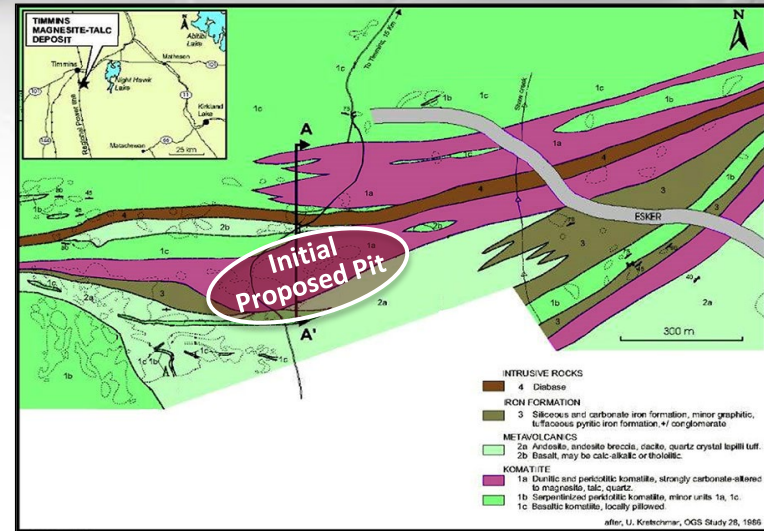
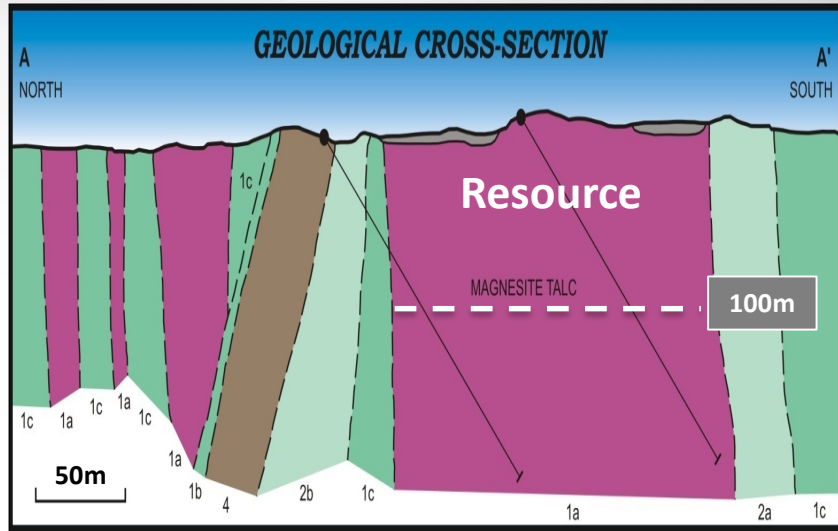
## High grade composites – Open at depth

Slicer



*High-grade intersections (Core length). No capping.  
Subset from composites based on 3 g/t Au over minimum 3m*

# Timmins Talc-Magnesite Project, Ontario

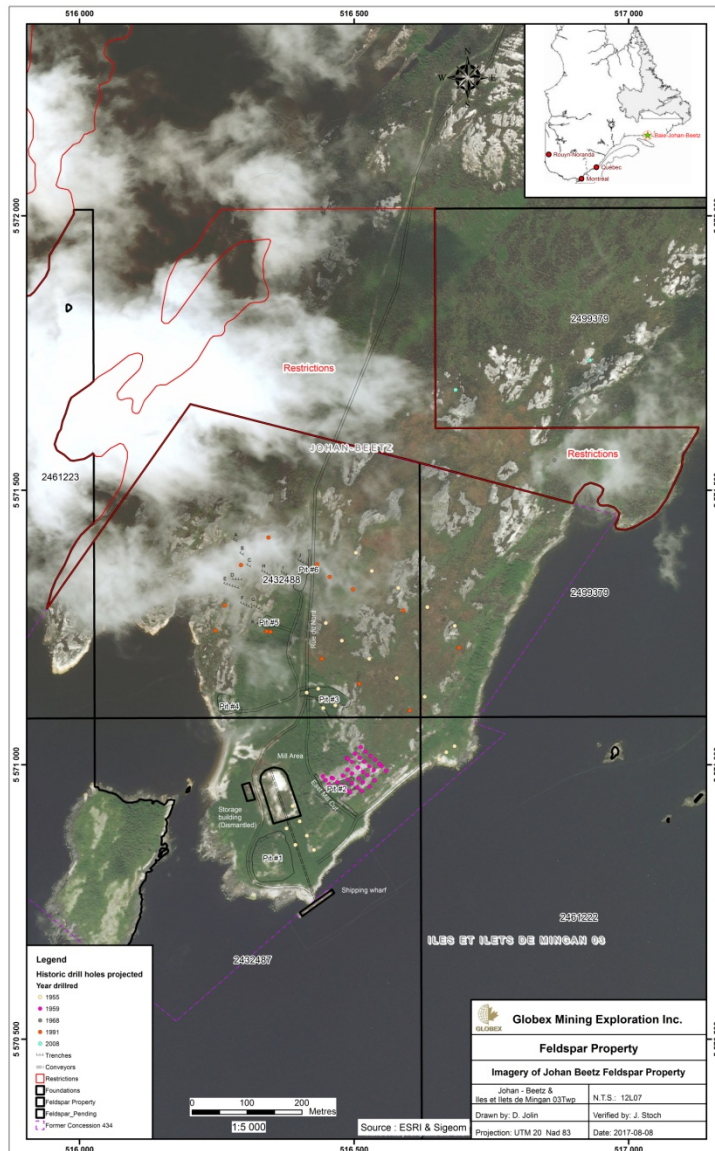


Resource Category	Tonnage (t)	Magnesite (%)	Talc (%)
Indicated	12,728,000	52.1	35.4
Inferred	18,778,000	53.1	31.7

NI 43-101 resources

- Open-pittable deposit
- Simple separation metallurgy
- No environmental negatives (Arsenic, asbestos, etc.)
- High quality (brightness) talc targeting highest value market niches – Plastics, cosmetics, etc.
- Near Timmins, Ontario (Skilled labour, transport, energy, etc)
- Saleable secondary product – MgO
- Targeting Wallboard Market among others
- Long mine life (+100 years)
- Mining Lease in place

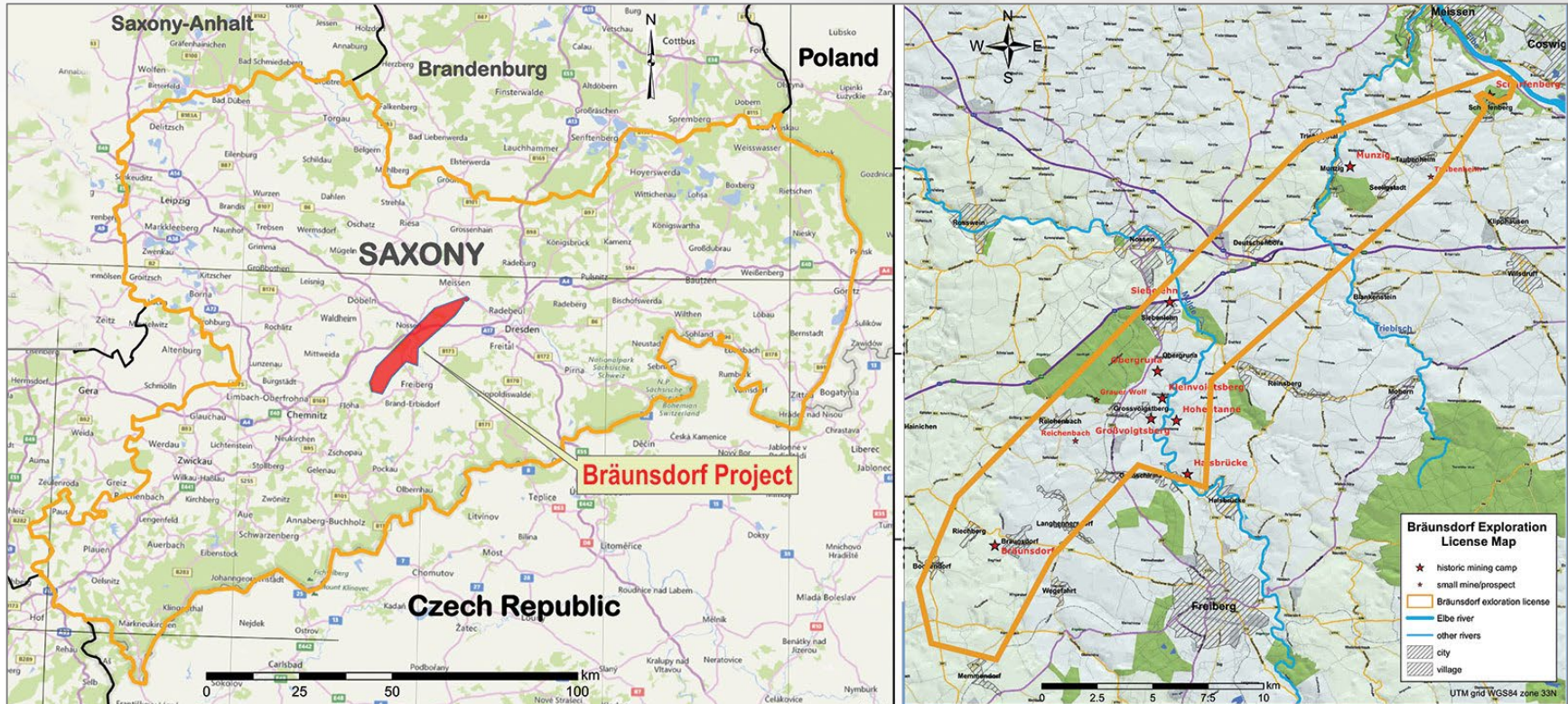
# Feldspar Property, Johan Beetz, Quebec



- Globex's Holdings
  - ✓ 2.5 % Gross Metal Royalty
- Potassic Feldspar
  - ✓ Large historical resource
  - ✓ Projected NA demand by 2020 is 250,000 tonnes
  - ✓ Imported from Europe
- Principal Uses
  - ✓ Ceramics
  - ✓ Tempered Glass

EnerSpar Corp - TSXV :ENER FSE : 5E0

# Bräunsdorf Silver Project, Germany



Approximately US \$500,000,000 of historic SILVER production  
750 Years of Intermittent Production  
No Modern Exploration  
Under Option to Excellon Resources Inc.



Principal Exploration Office

## Focus On The Value

- **FEW SHARES** outstanding and history of minimal stock dilution
- **EXPERIENCED**, fiscally prudent management
- **INCOME** from Royalties and Options
- **WE OWN** our property interests and exploration assets (offices, core facility, vehicles, core library, etc.)
- **NO DEBT**, funds available for exploration
- **LOW** Political Risk
  - Based in North America – QC, ON, NS, NB, Nev., Tenn., Wash. and Saxony Germany
- **SPECIALIZED**, Experienced Board of Directors
  - 3 senior geologists
  - 1 mining accountant
  - 1 senior finance professional





# **GLOBEX**

**Mining Enterprises Inc.**



**Thank You**

**Danke**

**Merci**

**Meegwetch**

[www.globexmining.com](http://www.globexmining.com)