



GLOBEX
Mining Enterprises Inc.



A Mineral Property Bank

Exploration – Diversification – Mining – Royalties

TSX: **GMX** – OTCQX: **GLBXF** – FSE: **G1MN**

June 2019

Except for historical information, this presentation may contain certain “forward-looking statements”. These statements may involve a number of known and unknown risks and uncertainties and other factors that may cause the actual results, level of activity and performance to be materially different from the expectations and projections of Globex.

No assurance can be given that any events anticipated by the forward-looking information will transpire or occur, or if any of them do so, what benefits Globex will derive from them.

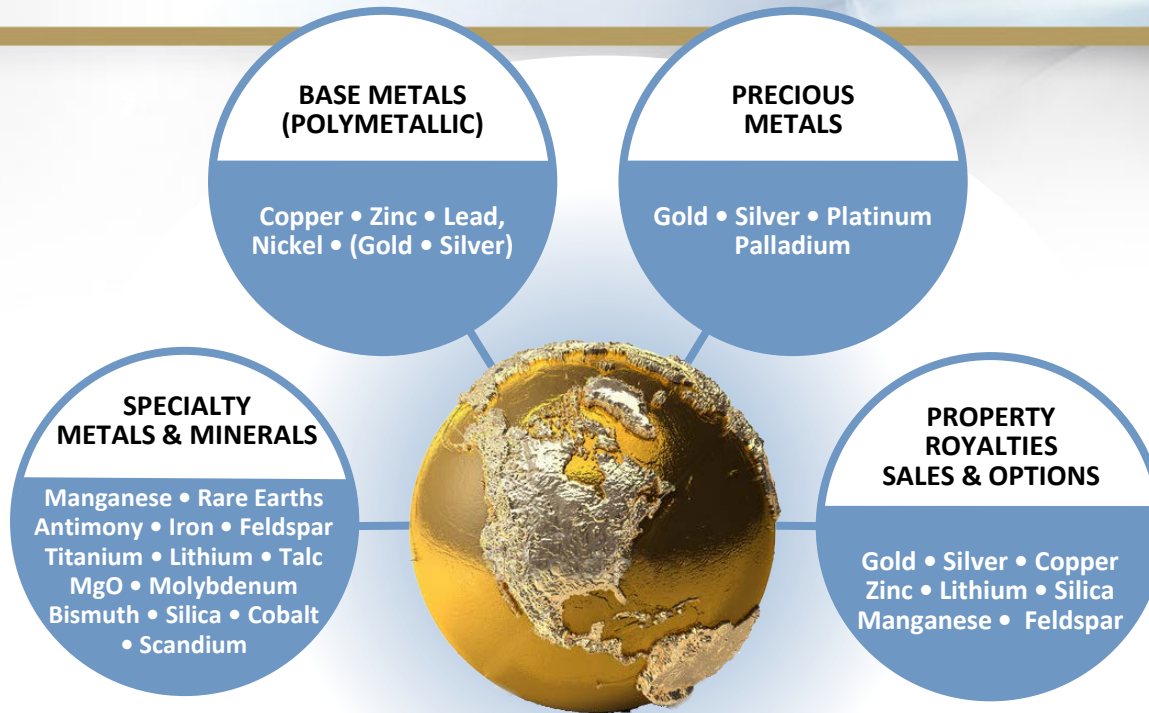
A detailed discussion of the risk factors relating to Globex is available in Globex’s Annual Information Form, available at www.sedar.com and at the Corporation’s web site at www.globexmining.com .

References to reserves or resources if NI 43-101 or JORC conformable will be indicated as such. If not so indicated, they are historical and have not been verified by Globex’s professional staff and should not be relied upon.

FOCUS

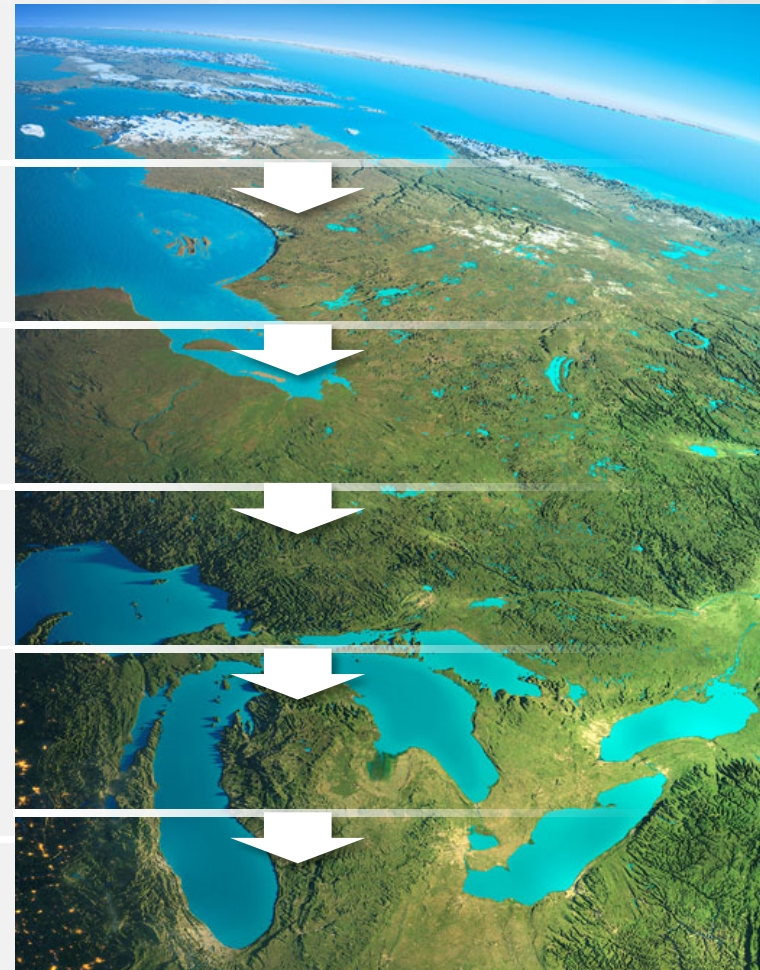
ON THE

VALUE



- ▶ Diversified
- ▶ Low political risk – focused in Eastern Canada, Germany and the U.S.A.
- ▶ Revenue from Royalties, Options and Joint Ventures
- ▶ No debt

- Mineral Property Bank/Incubator
- Specializing in acquisitions
- Asset upgrading through exploration and intellectual input
- Revenue through Options, Sales and Royalties
- Income = less share dilution, increased exploration expenditure, less shareholder risk, avoiding debt
- Increased property portfolio value





GLOBEX – THE BASICS

History of Minimal Share Dilution

- # Shares Issued (no rollbacks) 51,320,077
- Shares, Fully Diluted 54,102,577
- 11% owned by Management
- Professional board and management
 - 3 senior geologists, 1 mining accountant and 1 senior finance professional)
- Listings

GMX (Canada) **Toronto Stock Exchange**

G1MN (Germany) **Frankfurt Stock Exchange**
(Frankfurt, Stuttgart, Berlin, Munich, Tradegate and Lang & Schwarz)

GLBXF (USA) **OTCQX International**

Management and Directors

- Jack Stoch President and CEO - + 40 years of experience
P.Geo, Accredited Director
- Ian Atkinson Director - + 40 years of experience
P.Geo, M.Sc., A.K.C., D.I.C.
Currently Director Kinross, until 2015 President Centerra Gold
Former senior positions: Hecla, Battle Mountain Gold, Hemlo Gold Mines,
Noranda Group
- Johannes
H.C. Van Hoff Director – International Financial Professional, Chairman NS Gold Corp.
Former senior positions – Chairman & Senior Executive Officer Soros Funds
Ltd., PVF Pension Funds, Paribas Capital Markets, Bankers Trust. Roles
included: Manager, Senior Risk Manager, Deputy Head of Global Equity
Derivations, Managing Director, M&A Arbitrage, Derivatives Arbitrage and
Capital Investments.
- Dianne Stoch Accredited Director
Accountant (Corporate Planner, Senior Account Analyst,
Revenue Planner – Noranda Mines for 18 years)
- Chris Bryan Director – Retired Geologist and Mining Analyst
Previously VP, Director and Portfolio Manager Bolton Tremblay
Mining Analyst /Portfolio Manager Caisse Depot Placement Quebec



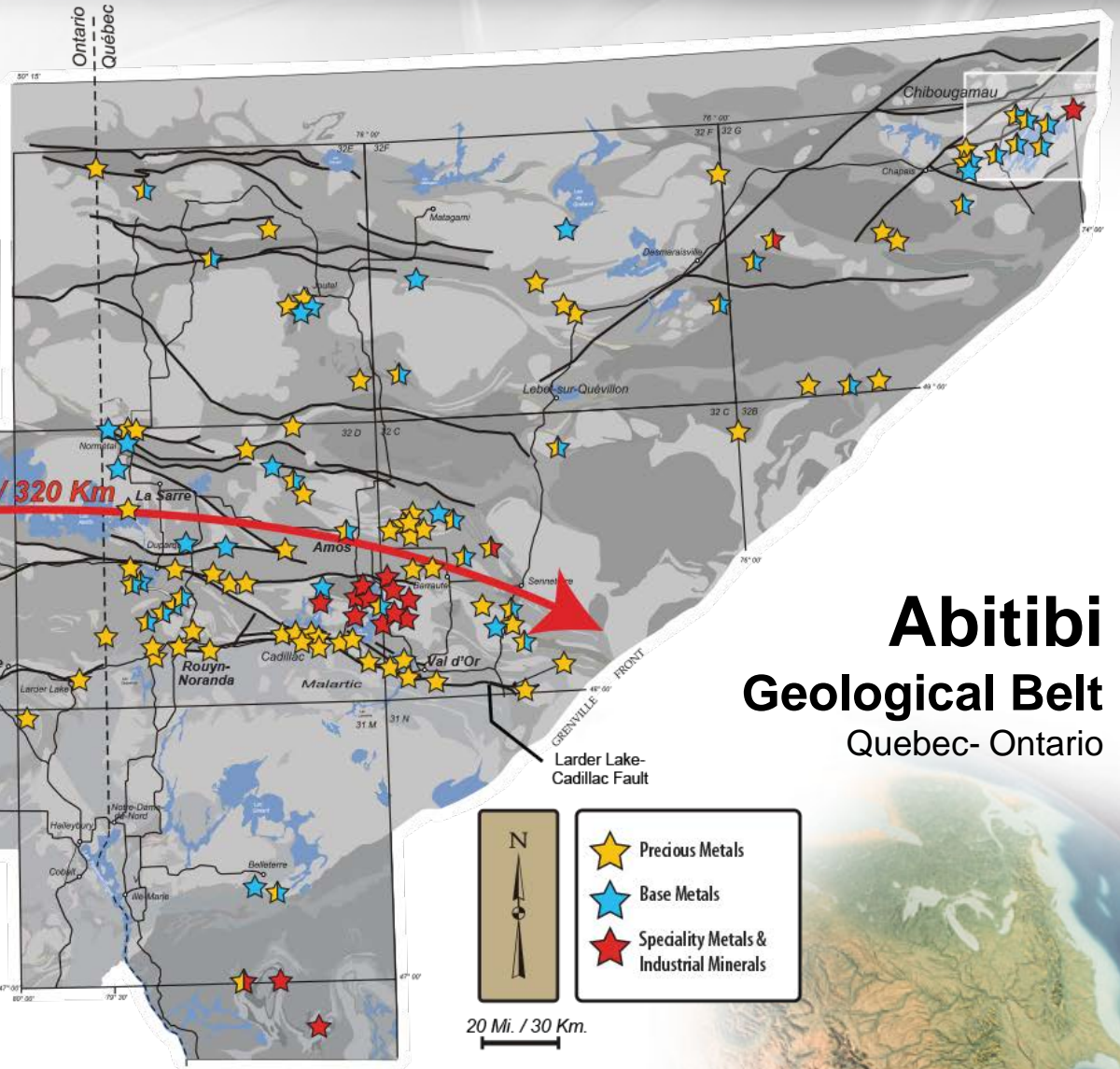
Numerous Owned Properties and Royalties

Assets include over 40 Former Mines

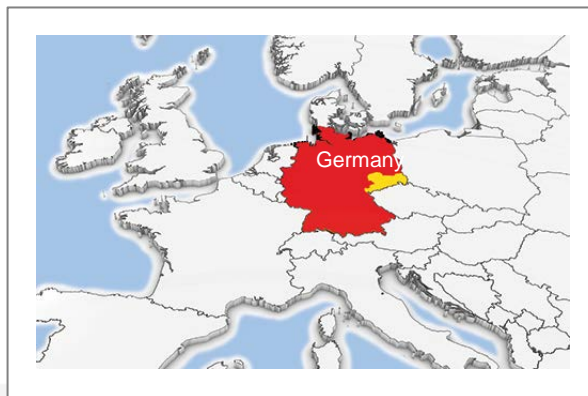
| | |
|-----|--|
| 172 | Projects |
| 83 | Precious Metals <ul style="list-style-type: none"> • Gold, Silver, Platinum, Palladium |
| 58 | Base Metals & Polymetallic <ul style="list-style-type: none"> • Copper, Zinc, Lead, Nickel (Gold, Silver) |
| 31 | Specialty Metals & Minerals <ul style="list-style-type: none"> • Talc, Iron, Lithium, Beryl, Magnesium Oxide, Manganese, Mica, Molybdenum, Rare Earths, Titanium, Silica, Bismuth, Pyrophyllite, Vanadium, Antimony, Feldspar, Cobalt, Scandium |
| 58 | Royalties |
| 3 | Active options <ul style="list-style-type: none"> • Cash payments • Share payments • Exploration & Development expenditures • Gross Metal Royalty |
| 53 | Historical or NI 43-101 Resources |

Note: Some properties have been combined due to proximity or infill staking

Diversified Mineral Holdings



**Abitibi
Geological Belt**
Quebec- Ontario



20 Mi. / 30 Km.

-  Precious Metals
-  Base Metals
-  Speciality Metals & Industrial Minerals



All GLOBEX properties possess one or more key attributes:

- Historical or NI 43-101 Resource
- Drill intersections of Economic Interest
- Past production
- Mineralized showings or drill targets
 - geophysical, geochemical, geological
- Location on major ore localizing structures or in prolific mining camps
 - ex. Cadillac Break, Porcupine-Destor Break, Noranda, Val d'Or, Joutel, Malartic, Chibougamau and Timmins Mining Camps, etc.

- Acquiring diversified high potential assets



Francoeur/Arntfield Gold Mines



Very high grade GOLD values at surface in Waswanipi area



Multiple Cu-Ni zones over 6 km strike length



Manganese and Vanadium New Brunswick and Quebec



High grade Rare Earth property



Inferred 100,000 oz Gold Resource New Brunswick



Four lithium projects in Quebec



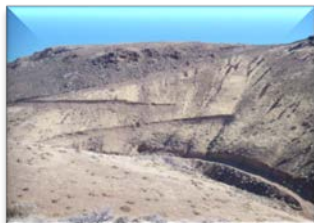
Scandium/Rare Earth Property in Quebec



- PRODUCTION REVENUE
- ***Mid Tennessee Zinc Royalty (Nyrstar)***
Production mining and processing started May 2017
Projected annual revenue over \$2 million per year



- MEDIUM TERM POTENTIAL
- ***Authier Lithium Royalty (Sayona Mining)***
Definitive Feasibility Study done. Initial Mine Life +14 years outlined, IRR 33%, +31,000 m drilled, resource 20.94 Mt. Projected production date 2020?



- ***Magusi Cu, Zn, Au, Ag Deposit***
Production Scenario completed by third party
Road, power, etc. in place. Ramp portal started.
- ***Bell Mountain Au, Ag***
Eros Resources has been studying putting our Au, Ag deposit in Nevada into production. Globex holds an Advance Royalty and a 3% GMR. Open pit. Heap Leach. Construction to start in third quarter 2019?



- EXPLORATION
- By Globex Mining Enterprises Inc.
- By Renforth, Tres-Or, Quebec Precious Metals, Nyrstar, Eldorado Gold Lamaque, Rogue Resources, Chalice Gold, Great Thunder, Manganese X Energy, Galway Metals, Opawica, EnerSpar Corp., Vanadium One Energy, Sayona Mining, Pershimex/Dundee Precious Metals, Osisko Mining, Falco Resources, Radisson Resources, Eros Resources, etc.

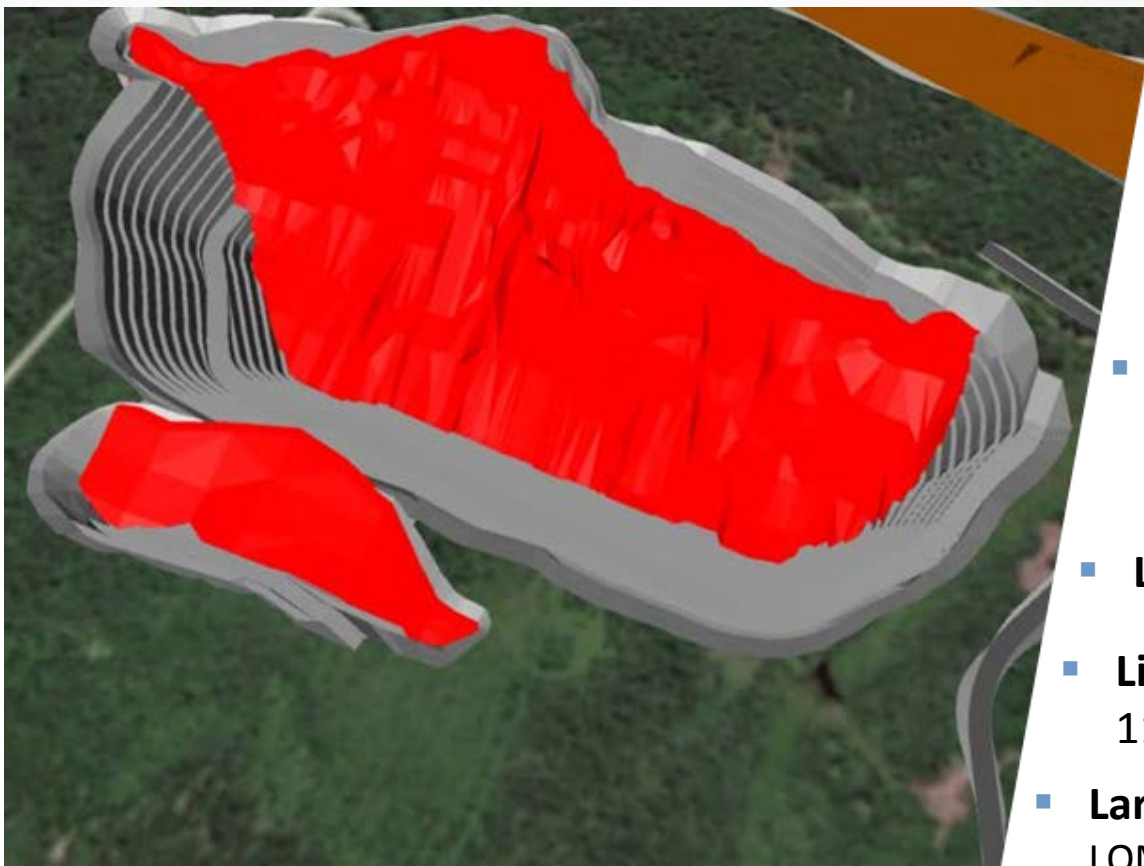
Middle Tennessee Mines, USA



- ❖ 3 Mines
 - Gordonville
 - Elmwood
 - Cumberland
- + Stonewall Project
- ❖ Operating for over 50 years
- ❖ Start-up May 2017
- ❖ Mine life +++ 20 years
 - Anticipated average 50,000 t annual zinc concentrate
- ❖ At current zinc price, Globex has a 1.4% Gross Metal Royalty
- ❖ London Warehouse Stocks are extremely low

| Reserves | Commodity | Proven Ore Reserves 2017 | Probable Ore Reserves 2017 | Total Ore Reserves 2017 | | |
|-----------|-----------|---------------------------------|----------------------------------|--|---------------------------------|--|
| | (Mt) | 0.28 | 3.18 | 3.46 | | |
| | Zn (%) | 3.30 | 3.30 | 3.30 | | |
| Resources | Commodity | Measured Mineral Resources 2017 | Indicated Mineral Resources 2017 | Measured /Indicated Mineral Resources 2017 | Inferred Mineral Resources 2017 | |
| | (Mt) | 0.28 | 3.86 | 4.41 | 16.35 | |
| | Zn (%) | 3.70 | 3.50 | 3.50 | 3.40 | |

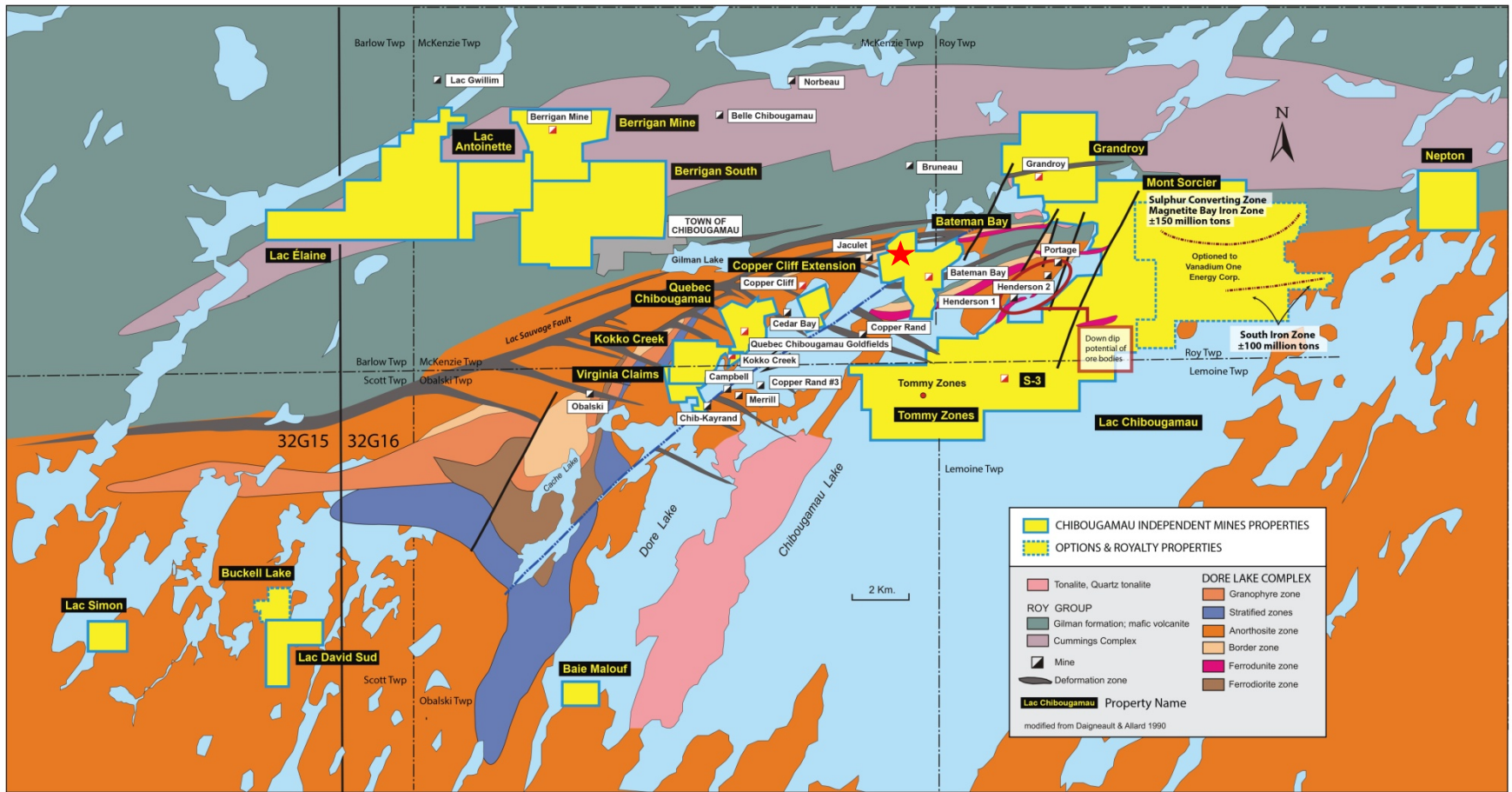
Simple, Open-Cut Mining Operation



Sayona Mining Limited Investor Presentation (see disclaimer)

- **Measured, Indicated and Inferred resources**
20,940,000 t @ 1.01% Li₂O
- **Simple mining method**
Truck and shovel operation
- **Competitive mining costs**
CAD \$460 /tonne
US \$675 /tonne Sale Price
- **Low development capex** of \$89.9 M
- **Life of mine** – 14 years
115,000 t/yr 6% Li₂O concentrate
- **Large, thick tabular body**
LOM waste to ore ratio 6.95:1
- **Anticipated production second half 2020?**

Chibougamau Area Royalty Property, Quebec



- 5 former copper-gold mines
- 3 extensions of copper-gold mines
- 2 unmined deposits (1 Cu, Au, - 1 Zn, Au, Ag)
- +273 million tonnes, Iron, Titanium, Vanadium deposits
- Numerous drill-ready targets
- Globex Royalty 3% GMR

Historical Production
47.6 Million Tons

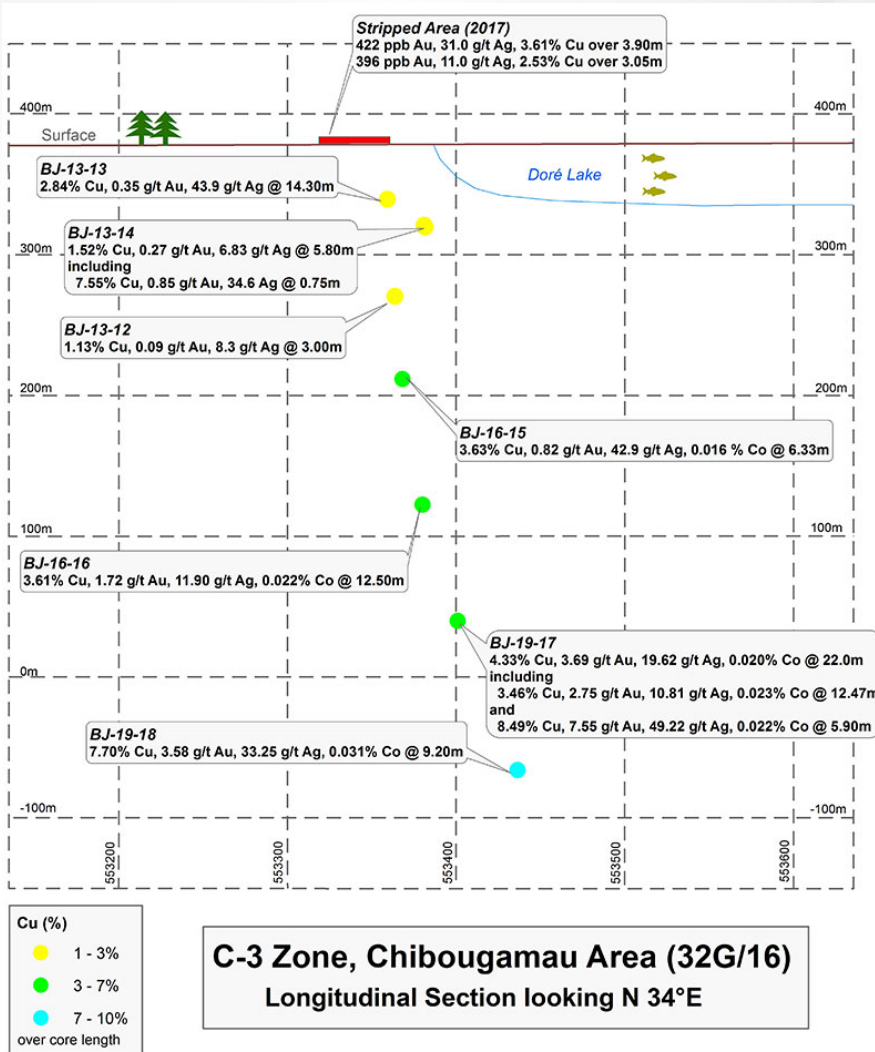
Significant Gold Intersections Within Previous Drilling Surface diamond drill holes Berrigan Property 32G16

| Hole # | From | To | Interval | % Zn | % Cu | Au g/t | Ag g/t |
|--------|---------|---------|----------|--------|-------|-----------|------------|
| A-005 | 131.4 m | 140.2 m | 8.8 m | 5.70% | | 6.96 g/t | |
| A-010 | 97.3 m | 105.2 m | 7.9 m | 4.43% | | 4.94 g/t | 25.36 g/t |
| A-016 | 18.9 m | 21.2 m | 2.3 m | 1.51% | | 6.43 g/t | |
| | 76.2 m | 77.7 m | 1.5 m | 3.45% | | 8.91 g/t | |
| A-061 | 91.6 m | 100.6 m | 9.0 m | 3.76% | 0.16% | 3.00 g/t | 17.24 g/t |
| | 107.1 m | 115.7 m | 8.6 m | 6.15% | 0.17% | 8.14 g/t | 39.70 g/t |
| A-062 | 59.3 m | 61.1 m | 1.8 m | 6.92% | | 4.62 g/t | 17.14 g/t |
| A-063 | 113.7 m | 114.3 m | 0.6 m | 17.55% | | 49.23 g/t | 404.64 g/t |
| | 129.4 m | 132.8 m | 3.4 m | 8.86% | | 8.88 g/t | 68.16 g/t |
| | 138.9 m | 141.5 m | 2.6 m | 4.69% | | 4.04 g/t | 11.14 g/t |
| A-065 | 121.6 m | 125.7 m | 4.6 m | 7.67% | | 6.08 g/t | 21.56 g/t |
| | 139.8 m | 144.5 m | 4.7 m | 2.80% | | 3.55 g/t | 7.64 g/t |
| | 164.7 m | 167.2 m | 2.5 m | 3.13% | | 6.95 g/t | 15.44 g/t |
| A-066 | 100.6 m | 101.8 m | 1.2 m | 22.90% | | 36.65 g/t | 39.73 g/t |
| | 159.8 m | 168.8 m | 9.0 m | 6.26% | | 5.19 g/t | 19.60 g/t |
| A-070 | 157.1 m | 158.2 m | 1.1 m | 16.75% | | 10.96 g/t | |
| A-072 | 188.7 m | 190.9 m | 2.2 m | 5.08% | | 3.13 g/t | |
| A-073 | 144.8 m | 145.1 m | 0.3 m | 27.90% | | 32.88 g/t | |
| A-076 | 126.3 m | 129.8 m | 3.5 m | 11.07% | | 3.02 g/t | |
| A-083 | 94.3 m | 96.3 m | 2.0 m | 4.45% | | 3.79 g/t | 10.34 g/t |
| | 119.4 m | 132.6 m | 13.2 m | 4.99% | | 2.88 g/t | 15.91 g/t |
| A-084 | 130.3 m | 142.8 m | 12.5 m | 4.58% | | 5.10 g/t | 17.18 g/t |
| A-086 | 50.9 m | 52.1 m | 1.2 m | 7.00% | | 15.07 g/t | 59.60 g/t |
| A-103 | 56.4 m | 59.4 m | 3.0 m | 5.84% | | 11.61 g/t | |

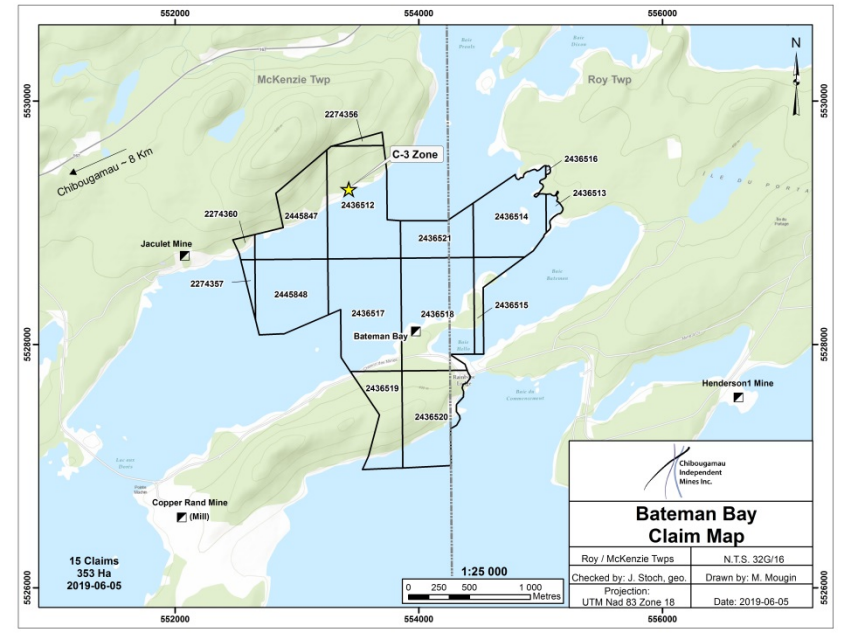
| Hole # | From | To | Interval | % Zn | % Cu | Au g/t | Ag g/t |
|----------|---------|---------|----------|--------|-------|-----------|-----------|
| U-02 | 44.9 m | 45.6 m | 0.7 m | 2.95% | | 17.81 g/t | 89.74 g/t |
| | 90.4 m | 91.4 m | 1.0 m | 13.80% | | 26.72 g/t | 58.91 g/t |
| | 95.8 m | 108.7 m | 12.9 m | 5.75% | | 3.11 g/t | 15.17 g/t |
| U-03 | 8.2 m | 16.6 m | 8.4 m | 13.09% | | 6.98 g/t | 20.71 g/t |
| | 49.4 m | 64.0 m | 14.4 m | 8.69% | | 3.41 g/t | 17.49 g/t |
| U-04 | 17.4 m | 19.7 m | 2.3 m | 12.77% | | 4.60 g/t | 14.65 g/t |
| | 85.9 m | 86.6 m | 0.7 m | 7.05% | | 37.68 g/t | 78.09 g/t |
| U-09 | 71.8 m | 75.8 m | 4.0 m | 2.32% | | 4.32 g/t | 12.43 g/t |
| SU-23 | 2.8 m | 10.6 m | 7.8 m | 3.98% | | 3.33 g/t | 20.54 g/t |
| SU-52 | 0.0 m | 5.0 m | 5.0 m | 3.88% | | 3.01 g/t | 19.82 g/t |
| SU-59 | 0.0 m | 4.1 m | 4.1 m | 5.40% | | 3.51 g/t | 31.04 g/t |
| TA-87-27 | 31.1 m | 32.3 m | 1.2 m | 5.60% | | 17.98 g/t | 37.33 g/t |
| TA-87-40 | 81.1 m | 83.5 m | 2.4 m | 10.05% | | 2.96 g/t | 50.05 g/t |
| | 91.4 m | 94.2 m | 2.8 m | 10.82% | | 3.23 g/t | 19.19 g/t |
| TA-90-50 | 65.5 m | 70.1 m | 4.6 m | 4.12% | | 6.78 g/t | 10.12 g/t |
| | 84.6 m | 87.5 m | 2.9 m | 3.90% | | 3.20 g/t | |
| | 95.5 m | 106.7 m | 11.2 m | 10.39% | 0.10% | 2.54 g/t | 19.26 g/t |
| | 114.0 m | 129.5 m | 15.5 m | 6.57% | 0.10% | 8.05 g/t | 23.58 g/t |
| TA-90-51 | 197.4 m | 200.0 m | 2.6 m | 5.39% | 0.21% | 3.52 g/t | 20.10 g/t |
| TA-90-52 | 201.2 m | 203.3 m | 2.1 m | 5.21% | | 5.70 g/t | 11.60 g/t |
| TA-90-56 | 81.0 m | 84.4 m | 3.4 m | 5.75% | | 4.06 g/t | |
| | 164.4 m | 166.9 m | 2.5 m | 5.23% | | 6.18 g/t | |
| | 215.7 m | 219.6 m | 3.9 m | 6.74% | | 3.95 g/t | |
| TLT-09 | 247.4 m | 249.7 m | 2.3 m | | | 4.28 g/t | |

C-3 Copper/Gold Zone (Bateman Bay)

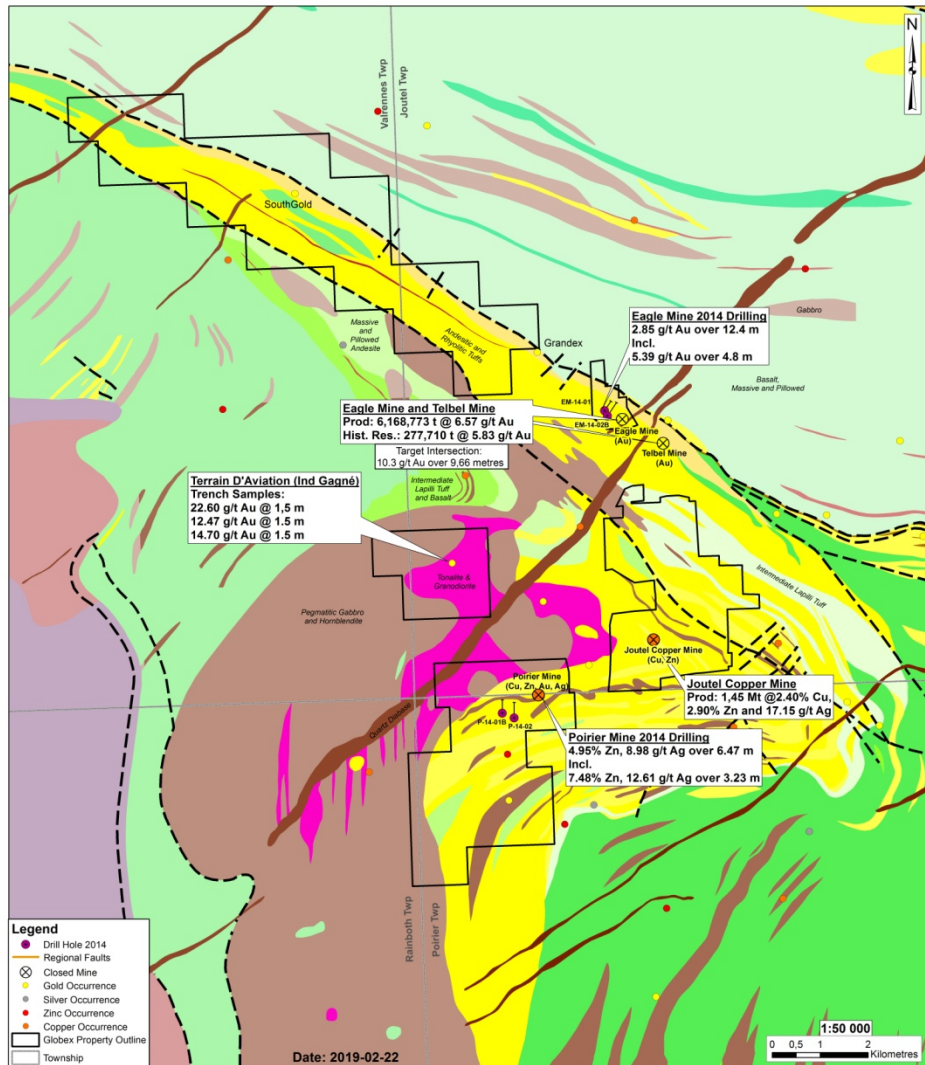
McKenzie & Roy Townships, Quebec (NTS 32G/16)



- Chibougamau Mining District
- Intercepted from surface to 450m (±1,500 ft) vertical
- High grade copper and gold (some silver and cobalt)
- Open to depth and along strike (both directions)
- Easily accessible by road and near the Town of Chibougamau



Joutel Compilation Map, Quebec



- Two former Copper, Zinc, Silver Mines (Poirier and Joutel Copper)
- One Former Gold Mine (Eagle Mine)
- Large exploration package including mines, showings and zones of alteration
- Known Resources:
 - **Joutel Mine:** 242,800 t at 10.37% Zn
 - **Poirier Mine:**
 - West & Q Zones – 1,400,863 T @ 1.24% Cu and 9.77% Zn
 - East Lens – 300,000 T @ 8.06% Zn
 - Main Zone – 534,000 T @ 2.5% Cu
 - **Eagle Gold Mine:** 277,710 t @ 5.83 g/t Au
 - + 10 km of Eagle/Telbel Gold Mines Horizon

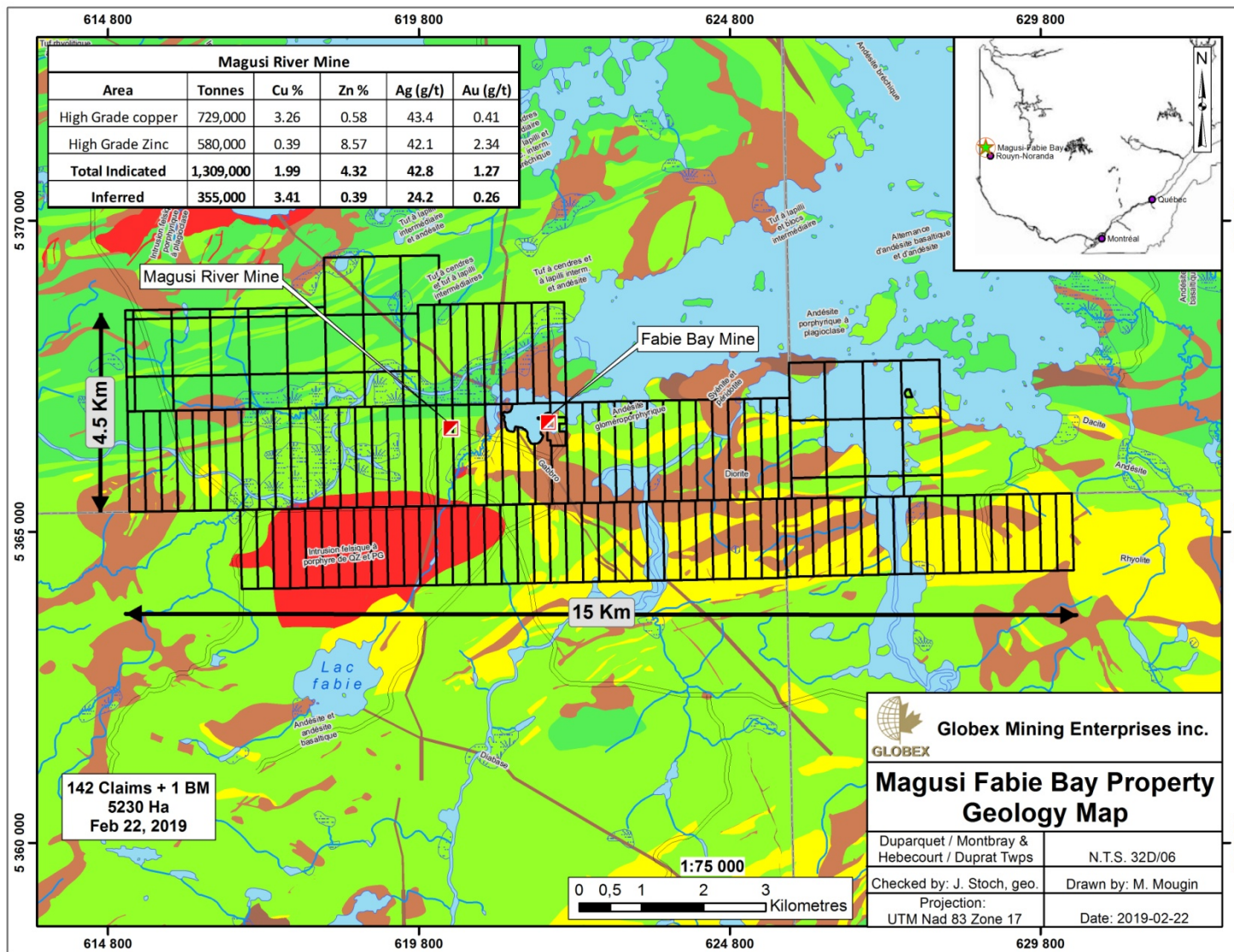
Note: All resources are historical and do not conform to current NI 43-101 standards and thus should not be relied upon

GLOBEX MINING ENTERPRISES INC.

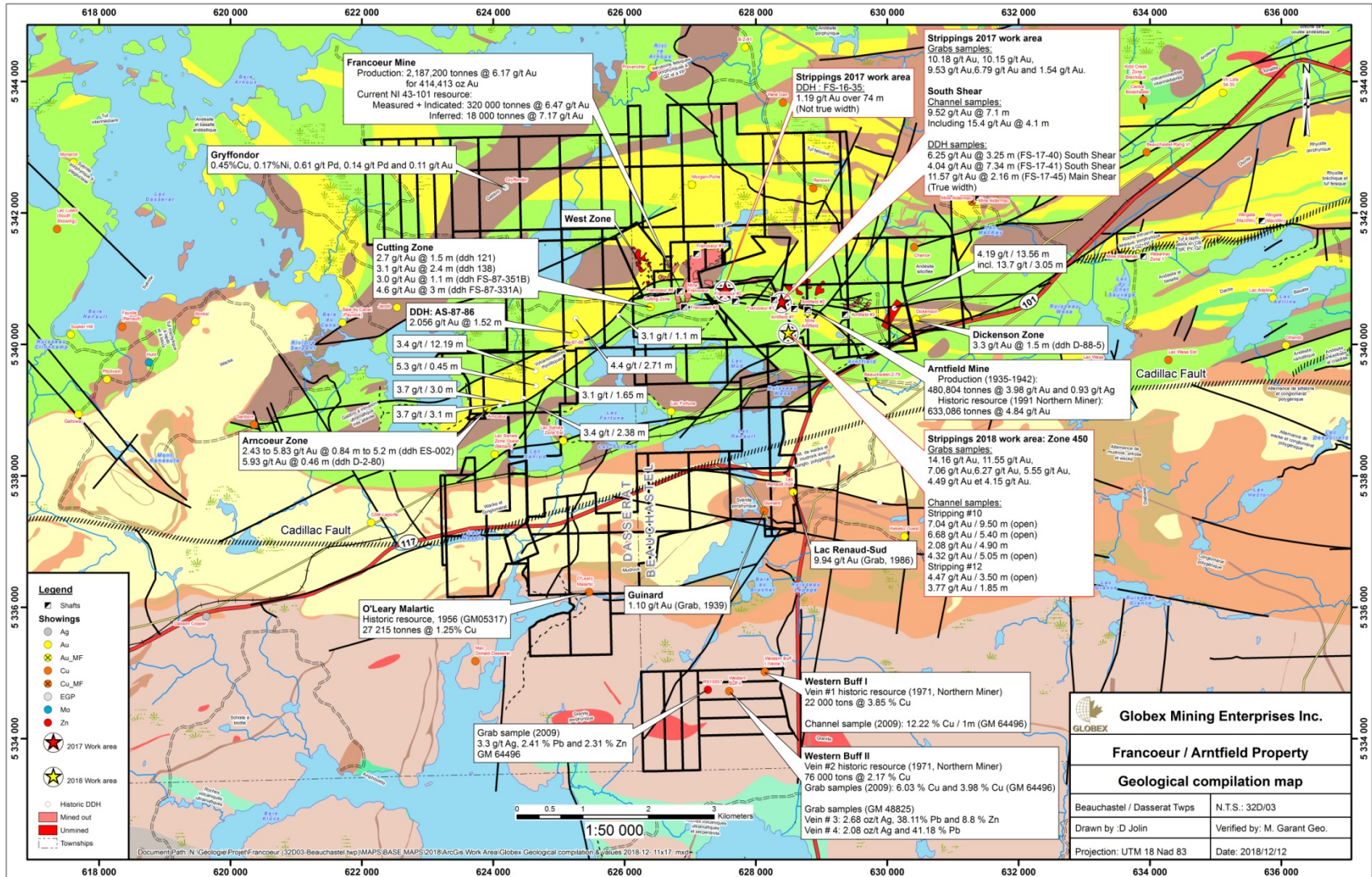
JOUTEL PROJECTS (32E08-09-10)
Joutel, Poirier, Rainboth and Valrennes Twps, QC

February 2019

Magusi-Fabie Bay Property, Quebec



Francoeur-Arntfield Mines Property 2019 Focus



Francoeur Mine Infrastructure



Montalembert Project, Quebec

Photo # 1

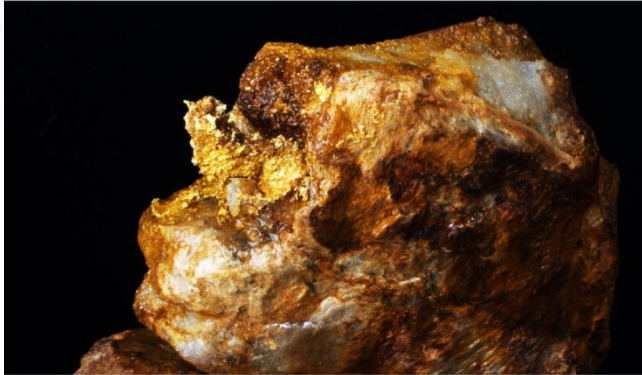
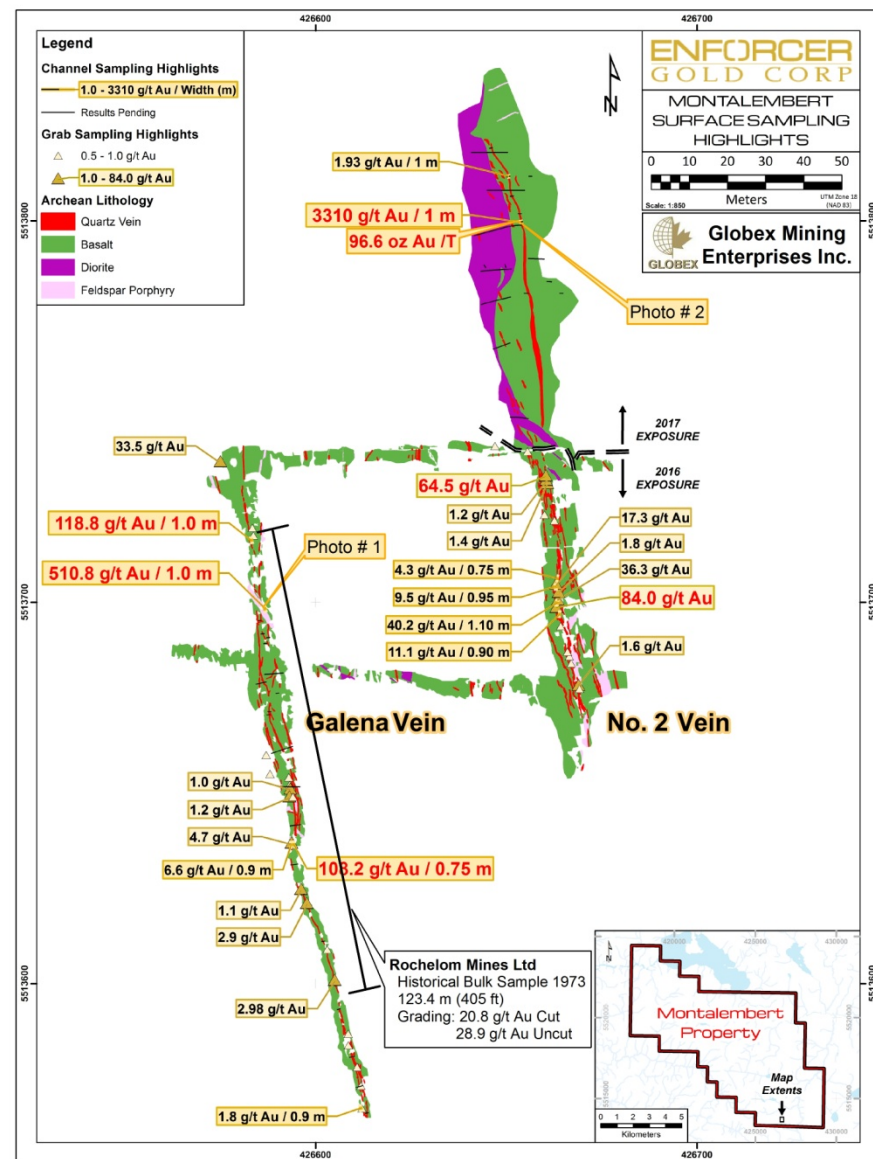
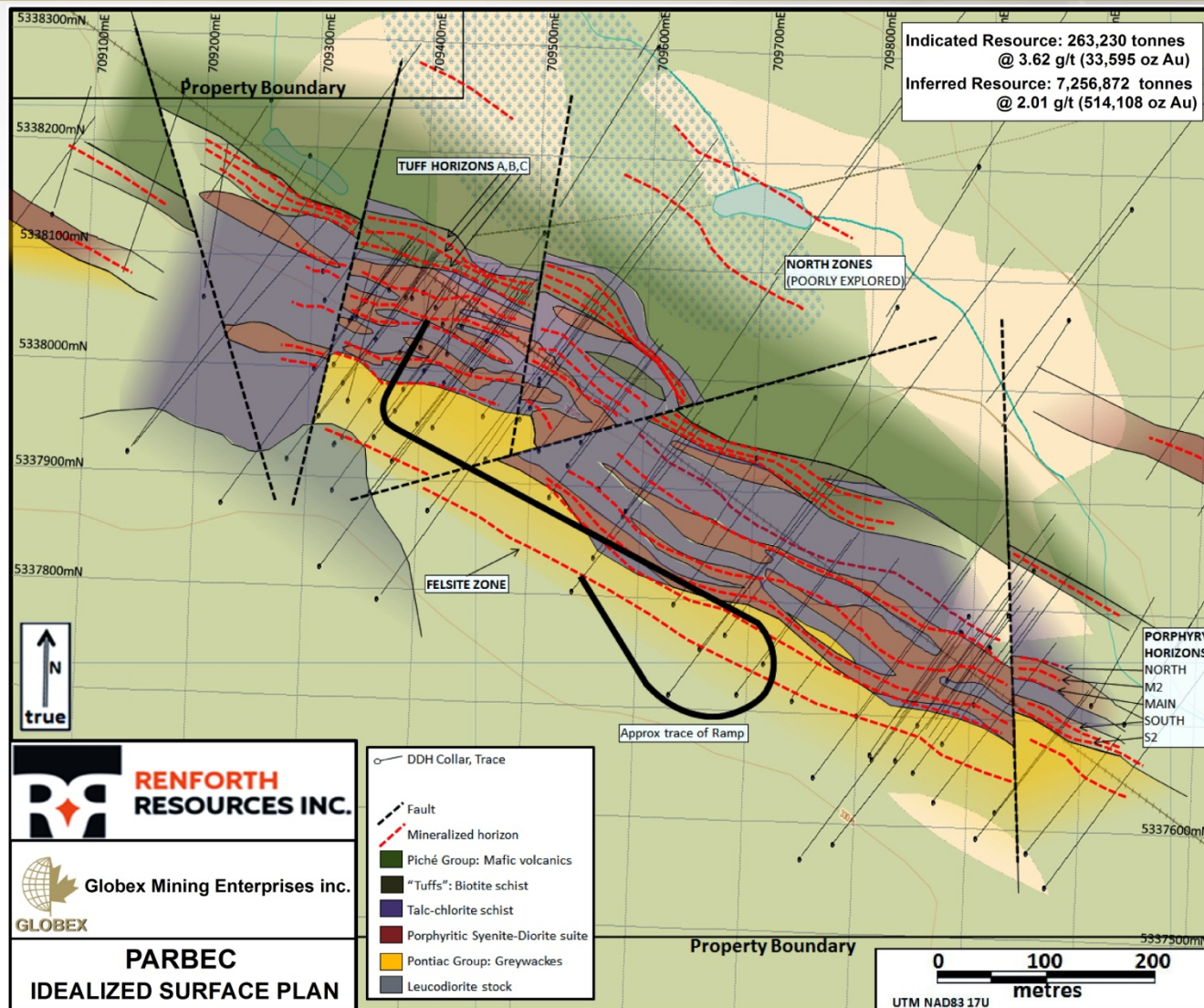


Photo # 2



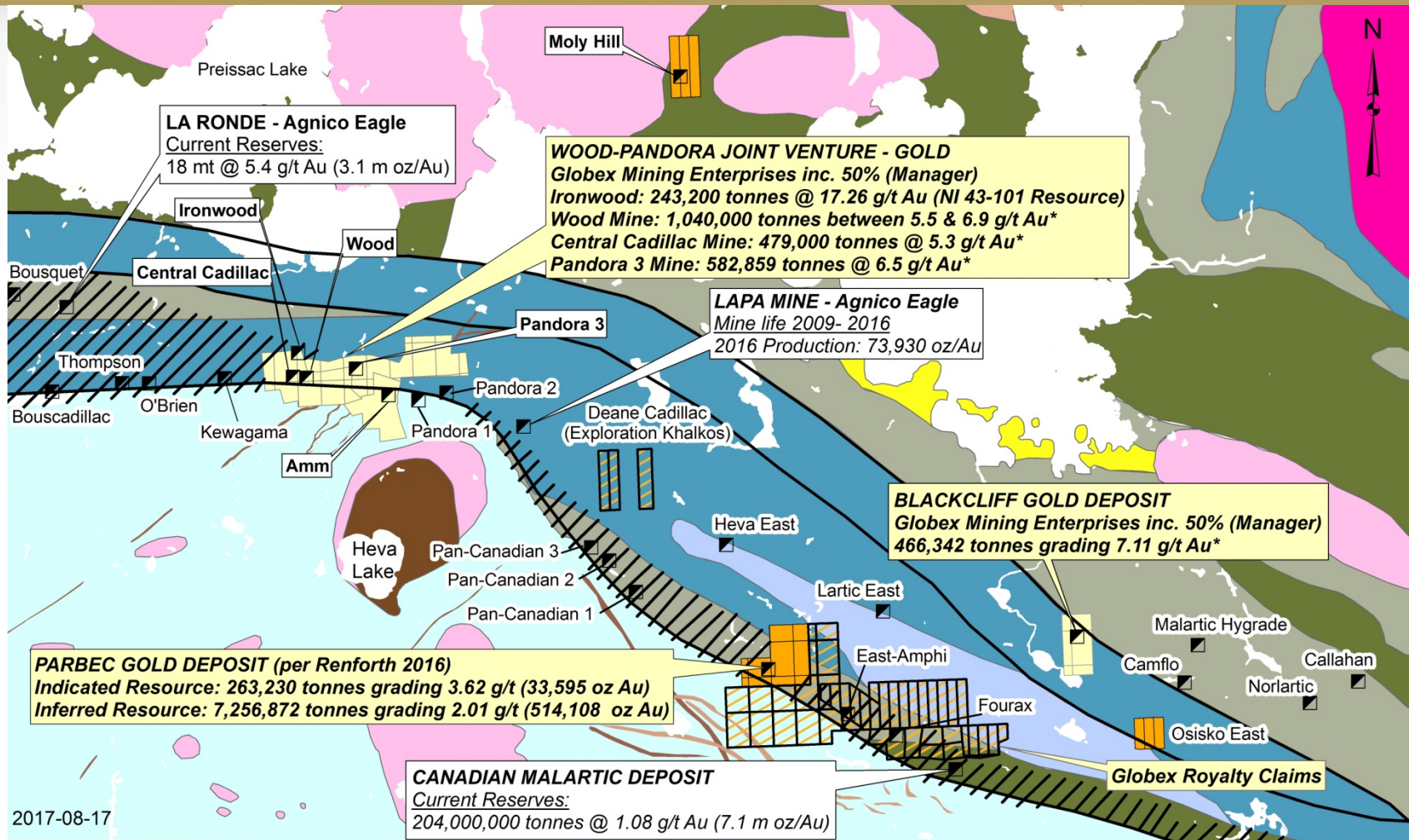
Parbec Property

Under Option with Renforth Resources Inc.

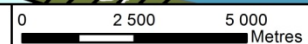


- Located approximately 5 km along strike to the Northwest of the large Canadian Malartic Gold Mine
- Underground access via a 580 m ramp
- 547,700 oz Au already defined
- Most of resource is within 200 m of surface
- Globex retains 2% GMR at current gold price

Cadillac-Malartic Mining Camp, Quebec



2017-08-17



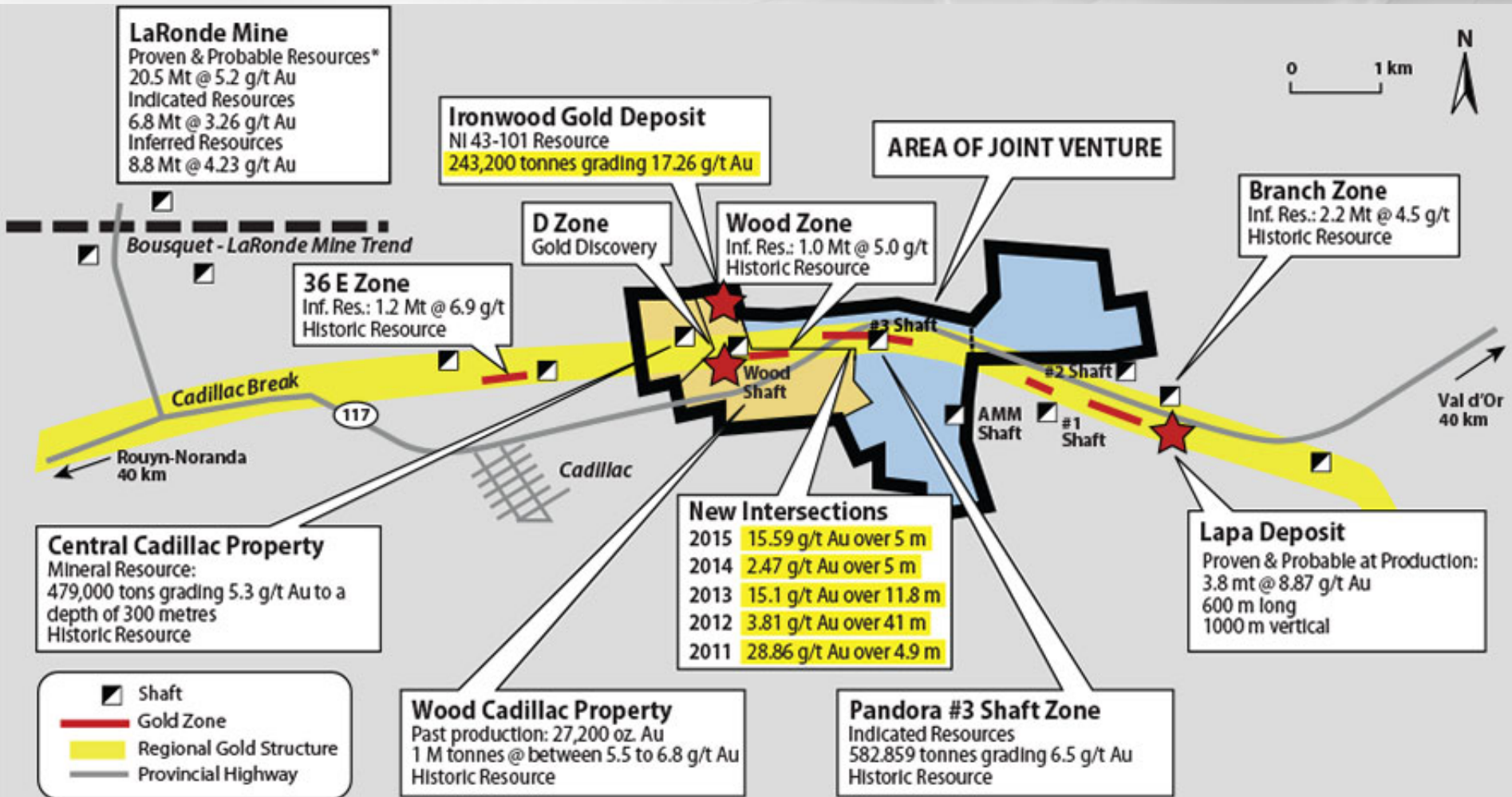
Légende

- Mine_Fermée
- Globex_Royalty
- Globex-JV
- Globex Properties

* Historic resources have not been verified by Globex's geologists and should not be relied upon.

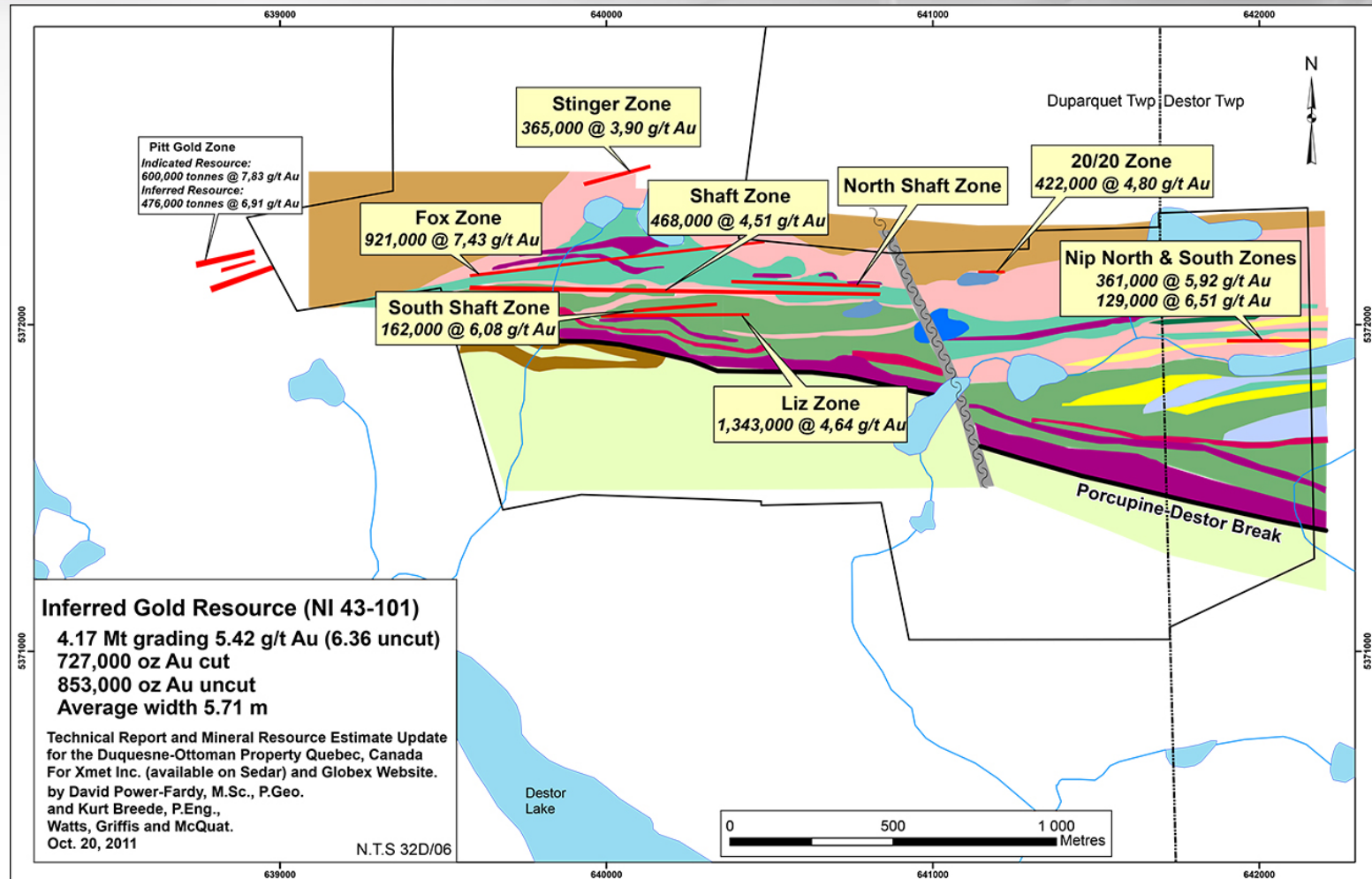
Cadillac Gold Camp, Quebec

(Wood-Pandora Joint Venture)

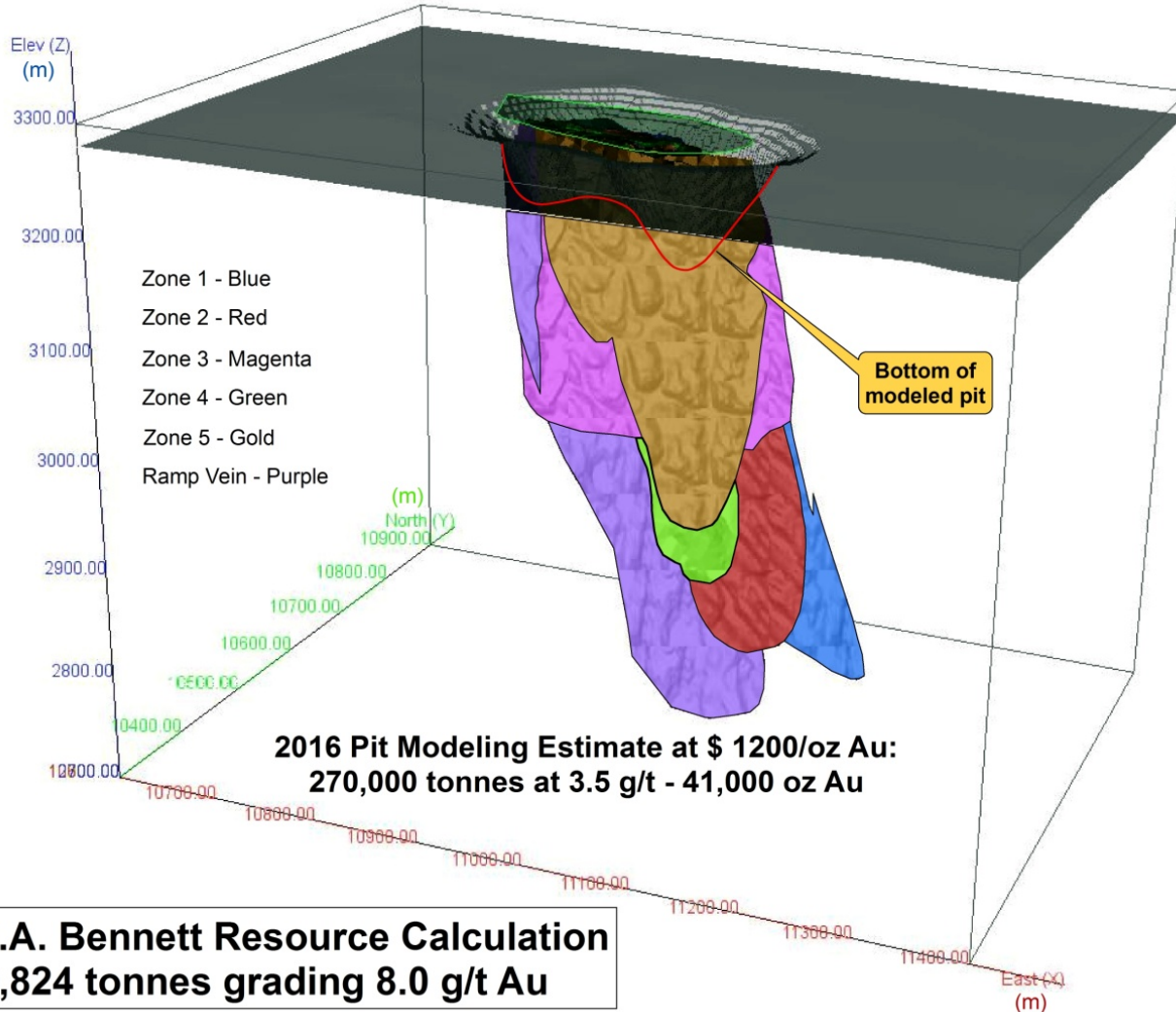


*Ref. Agnico Eagle Mines

Duquesne West, Quebec (50%)

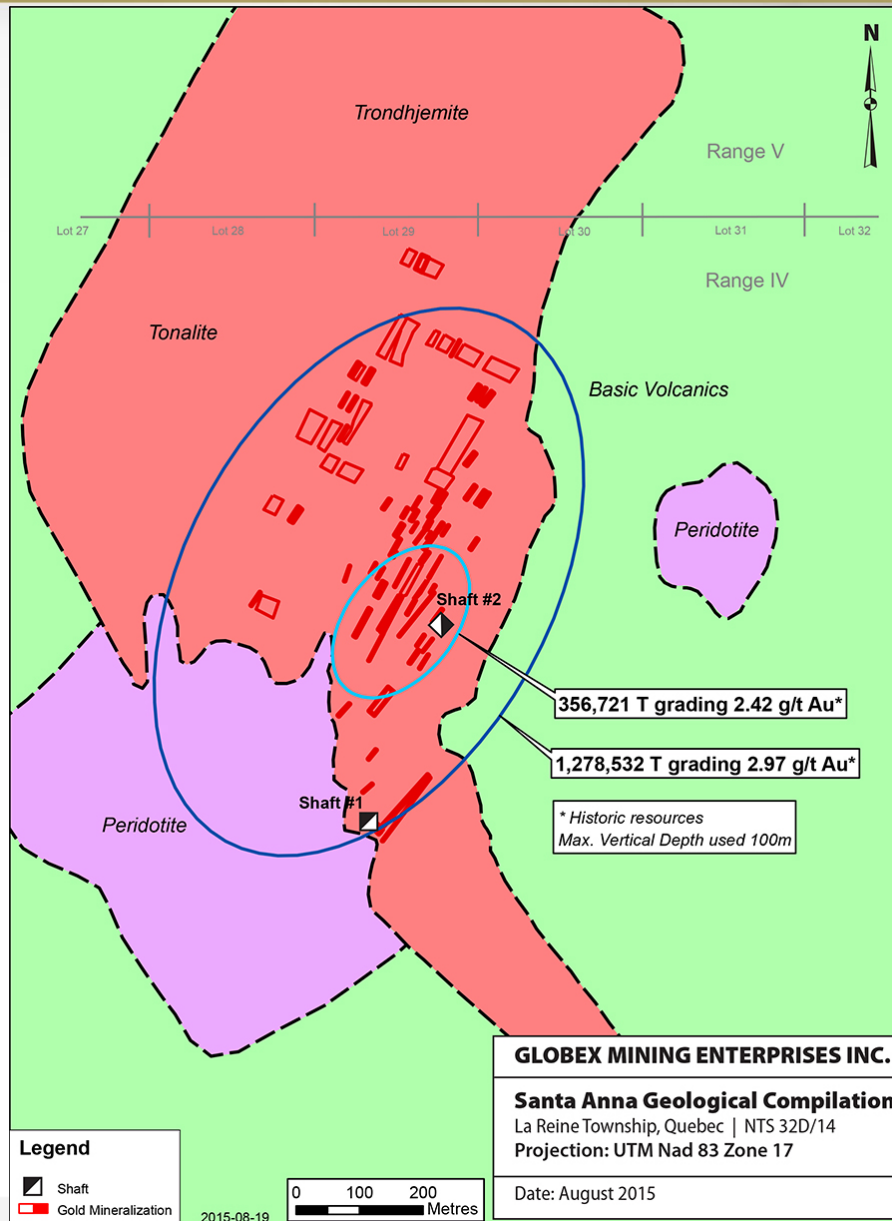


- Multiple gold zones adjoining and related to the Porcupine Destor Break
- Many gold zones open to depth



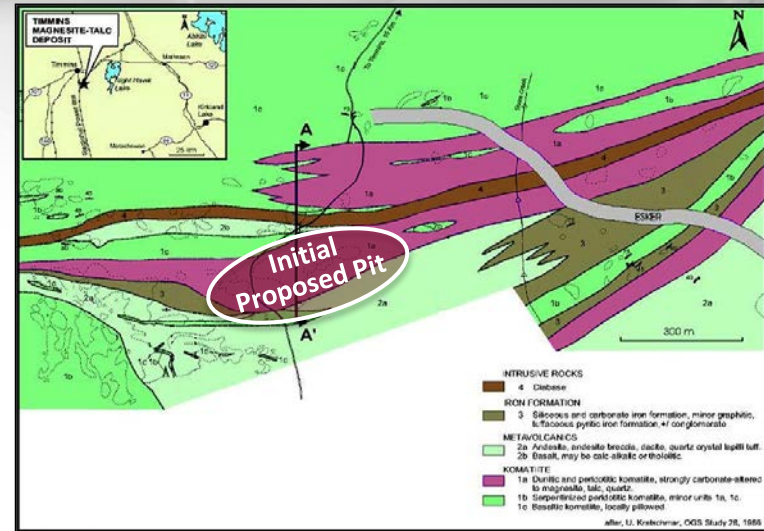
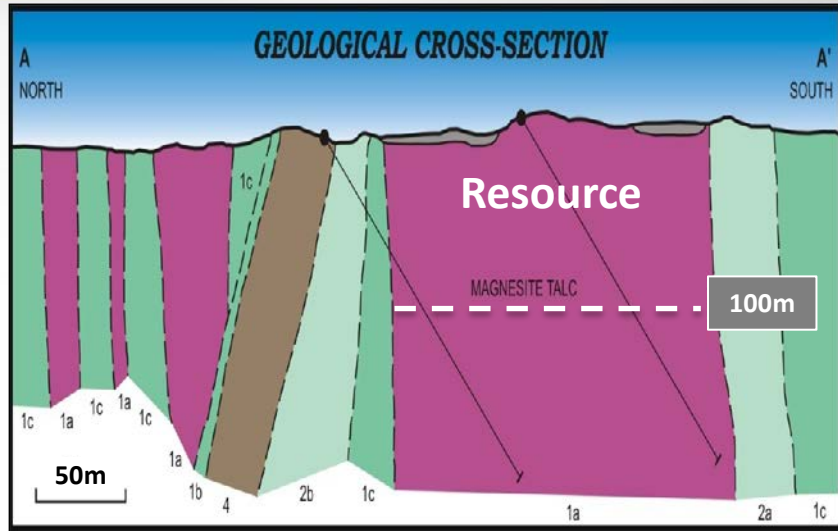
Source: RJK Exploration Ltd. 2016. Historical Non NI 43-101 Resources

Santa Anna Property, Quebec



- Surface exposed gold in high silica zones
- Potential open pit?
- Potential fluxing ore?
- Accessible by paved and gravel, all season roads
- Minimal strip ratio
- Coarse free gold

Timmins Talc-Magnesite Project, Ontario

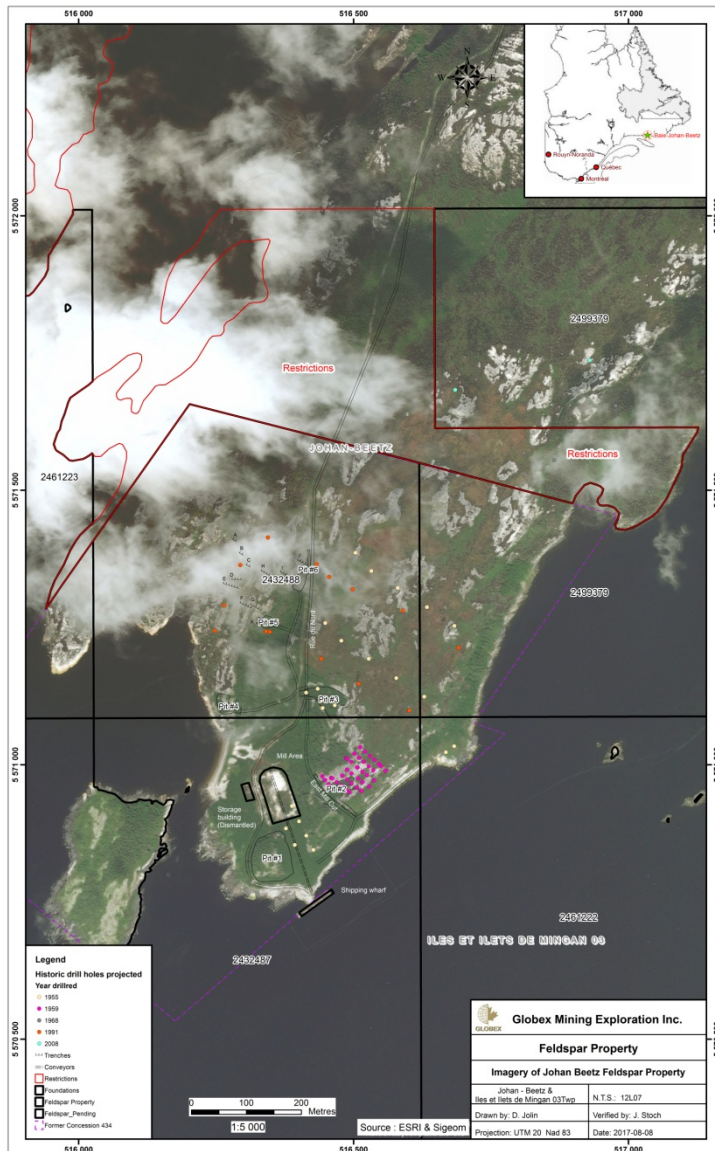


| Resource Category | Tonnage (t) | Magnesite (%) | Talc (%) |
|-------------------|-------------|---------------|----------|
| Indicated | 12,728,000 | 52.1 | 35.4 |
| Inferred | 18,778,000 | 53.1 | 31.7 |

NI 43-101 resources

- Open-pittable deposit
- Simple separation metallurgy
- No environmental negatives (Arsenic, asbestos, etc.)
- High quality (brightness) talc targeting highest value market niches – Plastics, cosmetics, etc.
- Near Timmins, Ontario (Skilled labour, transport, energy, etc)
- Saleable secondary product – MgO
- Targeting Wallboard Market among others
- Long mine life (+100 years)
- Mining Lease in place

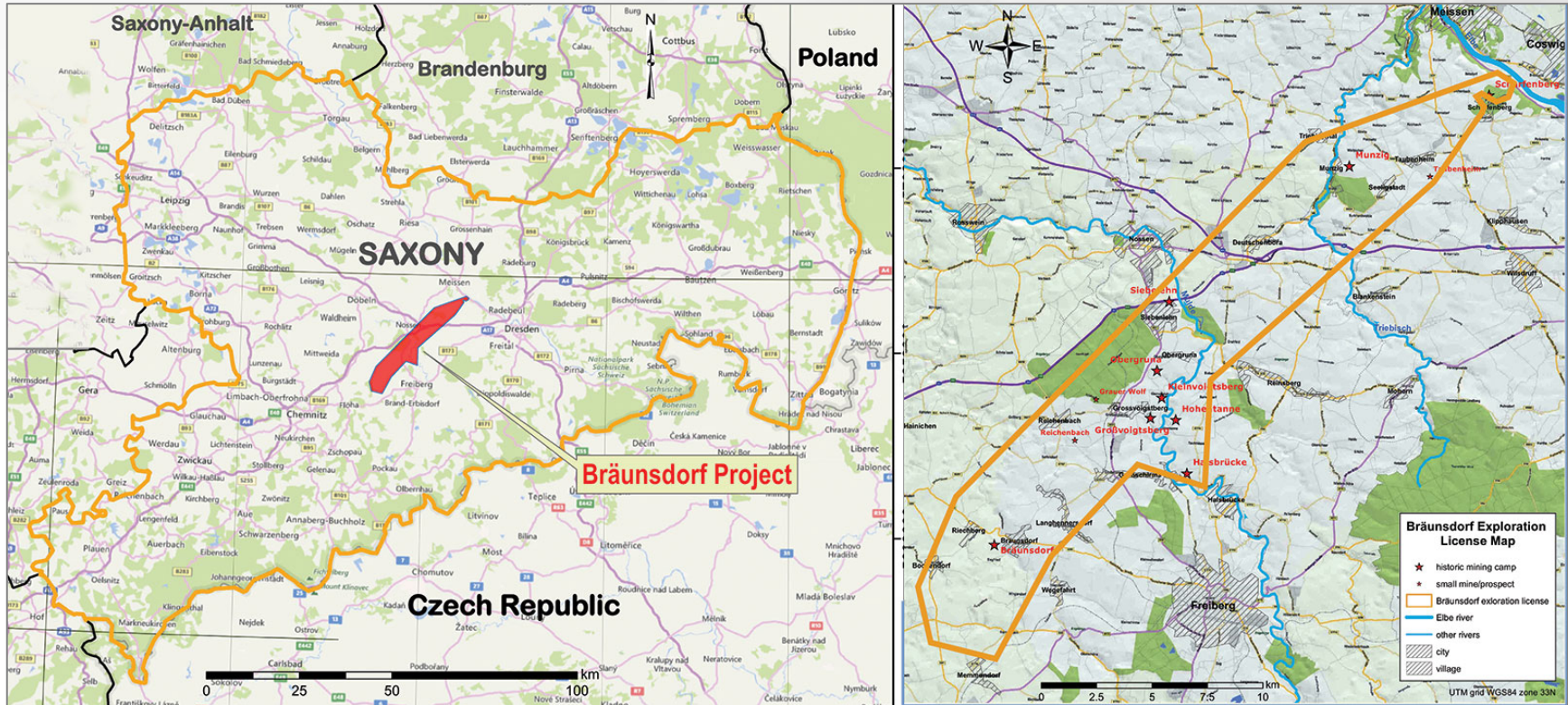
Feldspar Property, Johan Beetz, Quebec



- Globex's Holdings
 - ✓ 2.5 % Gross Metal Royalty
- Potassic Feldspar
 - ✓ Large historical resource
 - ✓ Projected NA demand by 2020 is 250,000 tonnes
 - ✓ Imported from Europe
- Principal Uses
 - ✓ Ceramics
 - ✓ Tempered Glass

EnerSpar Corp - TSXV :ENER FSE : 5E0

Bräunsdorf Silver Project, Germany



Approximately US \$500,000,000 of historic SILVER production
750 Years of Intermittent Production
No Modern Exploration

Unique Investment Opportunity



Principal Exploration Office

Focus On The Value

- **FEW SHARES** outstanding and history of minimal stock dilution
- **EXPERIENCED**, fiscally prudent management
- **INCOME** from Royalties and Options
- **WE OWN** our property interests and exploration assets (offices, core facility, vehicles, core library, etc.)
- **NO DEBT**, funds available for exploration
- **LOW** Political Risk
 - Based in North America – QC, ON, NS, NB, Nev., Tenn., Wash. and Saxony Germany
- **SPECIALIZED**, Experienced Board of Directors
 - 3 senior geologists
 - 1 mining accountant
 - 1 senior finance professional



GLOBEX

Mining Enterprises Inc.



Thank You

Danke

Merci

Meegwetch

www.globexmining.com