



GLOBEX
Mining Enterprises Inc.



A Mineral Property Bank

Exploration – Diversification – Mining – Royalties

TSX: **GMX** – OTCQX: **GLBXF** – FSE: **G1MN**

January 2019

Except for historical information, this presentation may contain certain “forward-looking statements”. These statements may involve a number of known and unknown risks and uncertainties and other factors that may cause the actual results, level of activity and performance to be materially different from the expectations and projections of Globex.

No assurance can be given that any events anticipated by the forward-looking information will transpire or occur, or if any of them do so, what benefits Globex will derive from them.

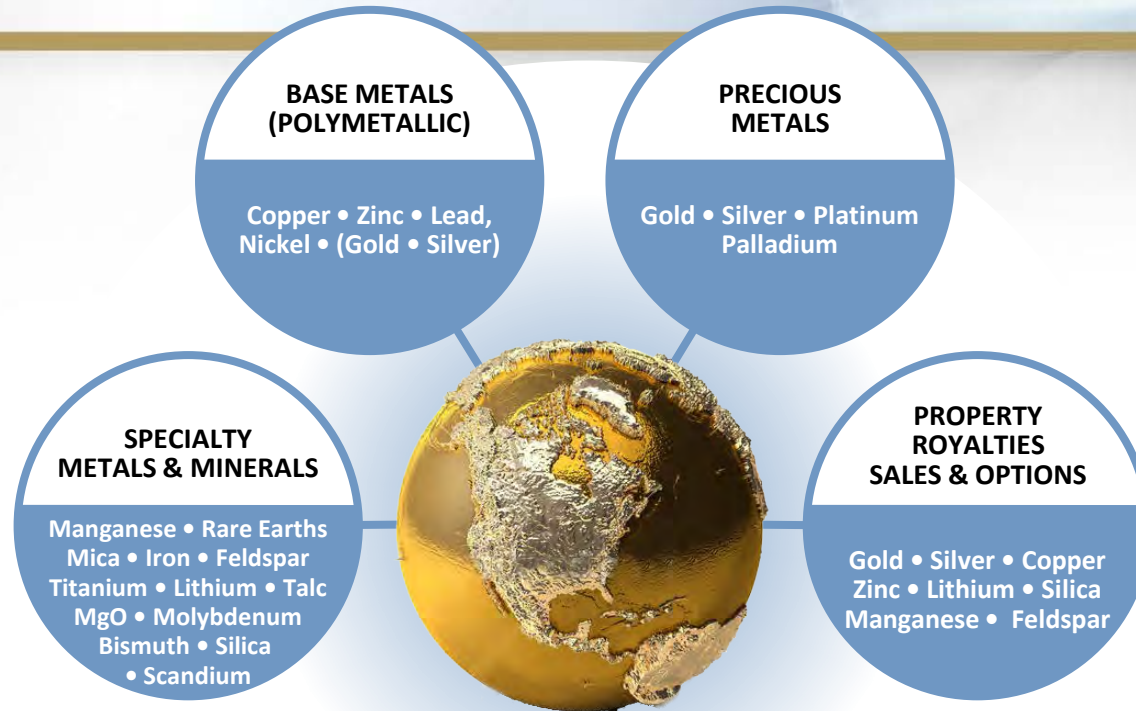
A detailed discussion of the risk factors relating to Globex is available in Globex’s Annual Information Form, available at www.sedar.com and at the Corporation’s web site at www.globexmining.com.

References to reserves or resources if NI 43-101 or JORC conformable will be indicated as such. If not so indicated, they are historical and have not been verified by Globex’s professional staff and should not be relied upon.

FOCUS

ON THE

VALUE



- ▶ Diversified
- ▶ Low political risk – focused in Eastern Canada, Germany and the U.S.A.
- ▶ Revenue from Royalties, Options and Joint Ventures
- ▶ No debt

- Mineral Property Bank/Incubator
- Specializing in acquisitions
- Asset upgrading through exploration and intellectual input
- Revenue through Options, Sales and Royalties
- Income = less share dilution, increased exploration expenditure, less shareholder risk, avoiding debt
- Increased property portfolio value





GLOBEX – THE BASICS

History of Minimal Share Dilution

- # Shares Issued (no rollbacks) 52,078,077
- Shares, Fully Diluted 55,500,577
- ± 9.68 % owned by Management
- Professional board and management
 - 3 senior geologists, 1 mining accountant and 1 senior finance professional)
- Listings

GMX (Canada) **Toronto Stock Exchange**

G1MN (Germany) **Frankfurt Stock Exchange**
(Frankfurt, Stuttgart, Berlin, Munich, Tradegate and Lang & Schwarz)

GLBXF (USA) **OTCQX International**

Management and Directors

- Jack Stoch President and CEO - + 40 years of experience
P.Geo, Accredited Director
- Ian Atkinson Director - + 40 years of experience
P.Geo, M.Sc., A.K.C., D.I.C.
Director Kinross, until 2015 President Centerra Gold
Former senior positions: Hecla, Battle Mountain Gold, Hemlo Gold Mines,
Noranda Group
- Johannes
H.C. Van Hoff Director – International Financial Professional, Chairman NS Gold Corp.
Former senior positions – Chairman & Senior Executive Officer Soros Funds
Ltd., PVF Pension Funds, Paribas Capital Markets, Bankers Trust. Roles
included: Manager, Senior Risk Manager, Deputy Head of Global Equity
Derivations, Managing Director, M&A Arbitrage, derivatives arbitrage and
Capital Investments.
- Dianne Stoch Accredited Director
Accountant (Corporate Planner, Senior Account Analyst,
Revenue Planner – Noranda Mines for 18 years)
- Chris Bryan Director – Retired Geologist and Mining Analyst
Previously VP, Director and Portfolio Manager Bolton Tremblay
Mining Analyst /Portfolio Manager Caisse Depot Placement Quebec



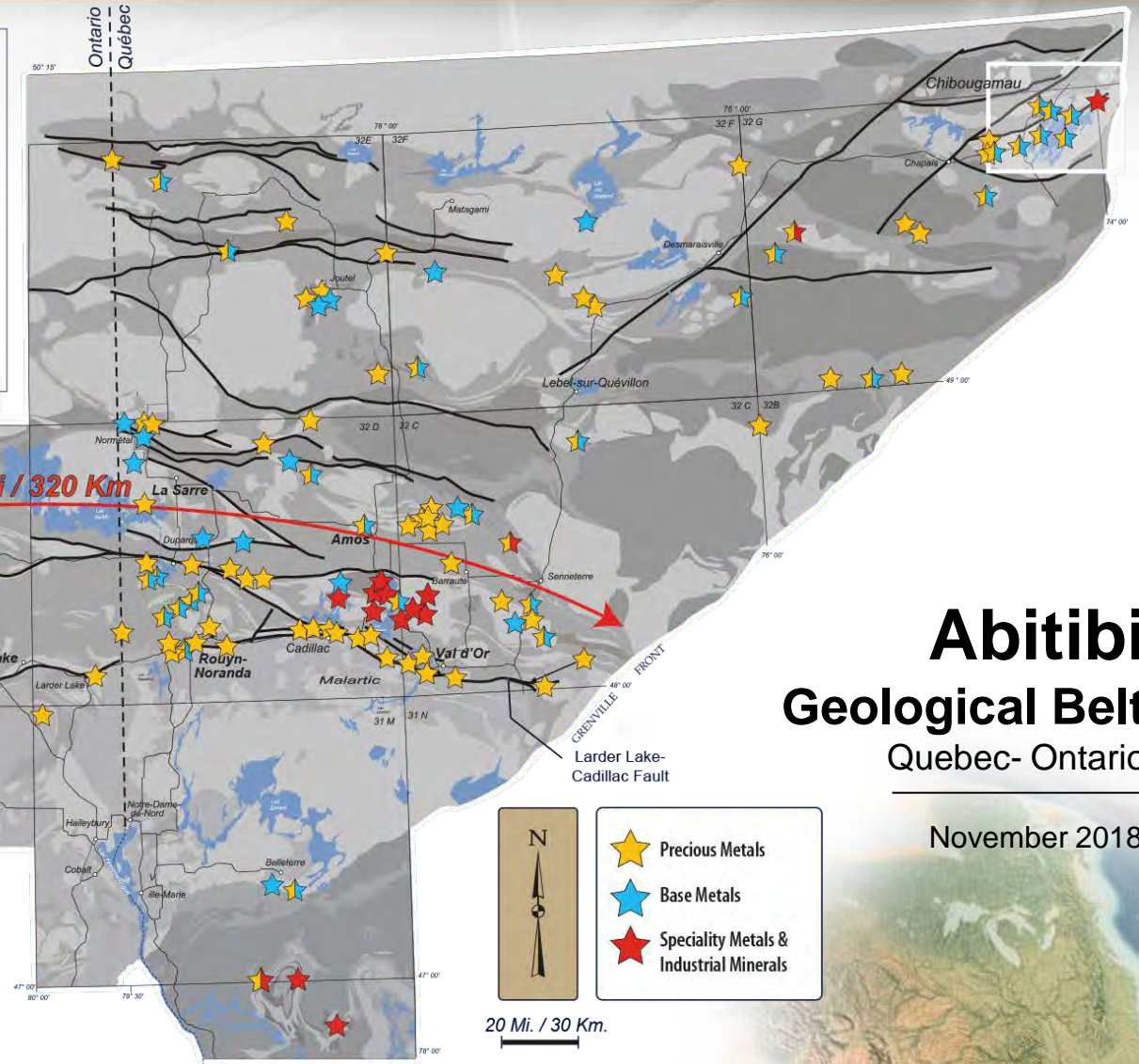
Numerous Owned Properties and Royalties

Assets include over 40 Former Mines

162	Projects
79	Precious Metals <ul style="list-style-type: none"> • Gold, Silver, Platinum, Palladium
54	Base Metals & Polymetallic <ul style="list-style-type: none"> • Copper, Zinc, Lead, Nickel (Gold, Silver)
29	Specialty Metals & Minerals <ul style="list-style-type: none"> • Talc, Iron, Lithium, Beryl, Magnesium Oxide, Manganese, Mica, Molybdenum, Rare Earths, Titanium, Silica, Bismuth, Pyrophyllite, Vanadium, Antimony, Feldspar, Cobalt, Scandium
53	Royalties
10	Active options <ul style="list-style-type: none"> • Cash payments • Share payments • Exploration & Development expenditures • Gross Metal Royalty
53	Historical or NI 43-101 Resources


Note: Some properties have been combined due to proximity or infill staking

Diversified Mineral Holdings

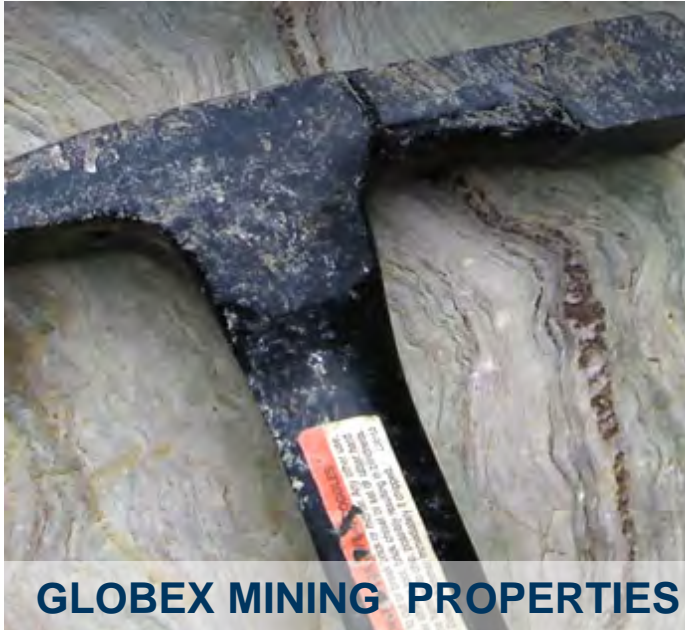


Abitibi Geological Belt Quebec- Ontario

November 2018



- ★ Precious Metals
- ★ Base Metals
- ★ Speciality Metals & Industrial Minerals



All GLOBEX properties possess one or more key attributes:

- Historical or NI 43-101 Resource
- Drill intersections of Economic Interest
- Past production
- Mineralized showings or drill targets
 - geophysical, geochemical, geological
- Location on major ore localizing structures or in prolific mining camps
 - ex. Cadillac Break, Porcupine-Destor Break, Noranda, Val d'Or, Joutel, Malartic, Chibougamau and Timmins Mining Camps, etc.

- Acquiring diversified high potential assets



Francoeur Arntfield Gold Mines



Very high grade GOLD values at surface in Waswanipi area



Multiple Cu-Ni zones over 6 km strike length



Manganese and Vanadium New Brunswick and Quebec



Two high grade Rare Earth properties



Inferred Gold Resource New Brunswick



Four lithium projects in Quebec



Scandium Property in Quebec



- **PRODUCTION REVENUE**
- ***Mid Tennessee Zinc Royalty (Nyrstar)***
Production mining and processing started May 2017
First Royalty payment July 2017
Projected annual revenue \$ ± \$2 million per year



- **MEDIUM TERM POTENTIAL**
- ***Authier Lithium Royalty (Sayona Mining)***
Definitive Feasibility Study early 2018. Initial Mine Life +18 years outlined, IRR 39%, 31,000 m drilled 20.94 Mt.



- ***Magusi Cu, Zn, Au, Ag Deposit***
Production Scenario completed by third party
Option to third party
- ***Bell Mountain Au, Ag***
Eros Resources has been studying putting our Au, Ag deposit in Nevada into production. Globex holds an Advance Royalty and a 3% GMR. Royalty may be expropriated by US Government in 2021



- **EXPLORATION**
- By Globex Mining Enterprises Inc.
- By Renforth, Tres-Or, Quebec Precious Metals, Nyrstar, Eldorado Gold Lamaque, Rogue Resources, Secova Metals, Chalice Gold, Great Thunder, Manganese X Energy, Galway Metals, Opawica, EnerSpar Corp., Vanadium One Energy, Sayona Mining, Pershimex/Dundee Precious Metals, Canadian Nickel Corp., Giga Resources, Osisko Mining, Falco Resources, Radisson Resources, Eros Resources, etc.

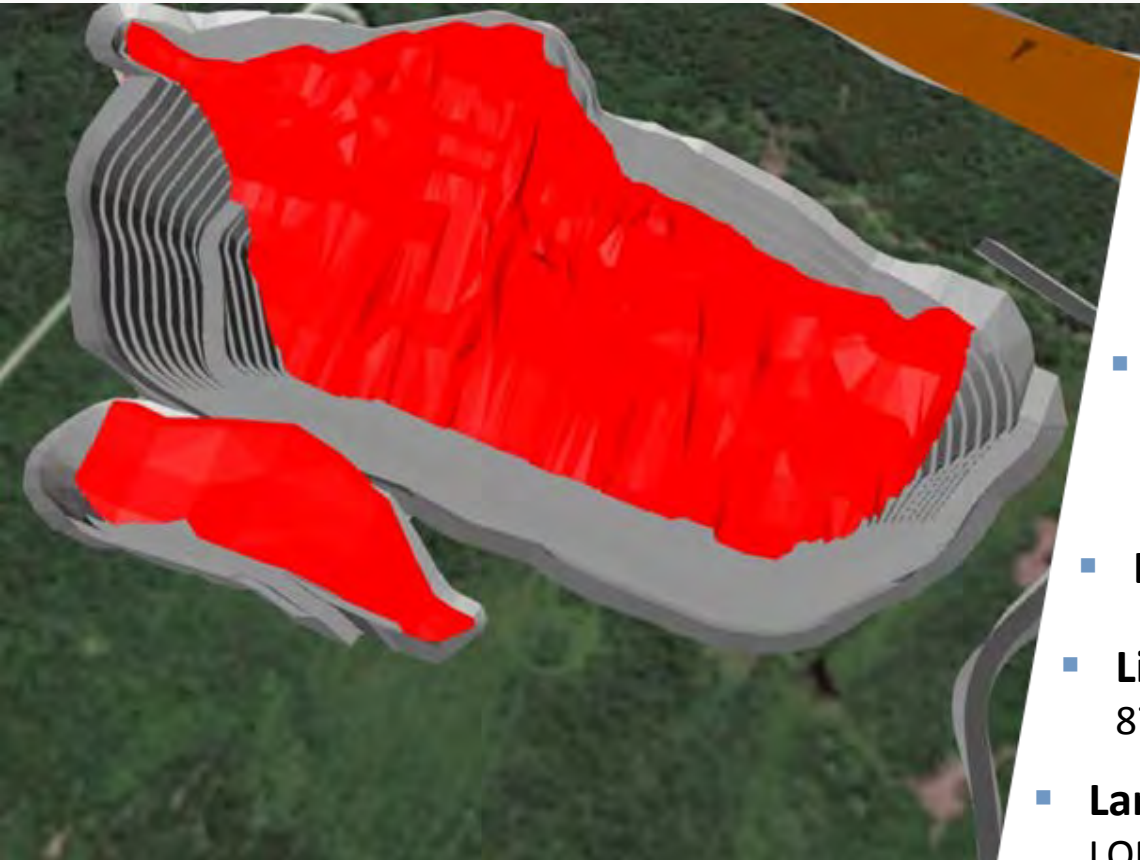
Middle Tennessee Mines, USA



- ❖ 3 Mines
 - Gordonville
 - Elmwood
 - Cumberland
- + Stonewall Project
- ❖ Operating for over 50 years
- ❖ Start-up May 2017
 - May-June
77,000 t milled
5,000 t concentrate
 - Anticipated average
50,000 t annual zinc concentrate
- ❖ At current zinc price, Globex has a 1.4% Gross Metal Royalty

Reserves	Commodity	Proven Ore Reserves 2017	Probable Ore Reserves 2017	Total Ore Reserves 2017		
	(Mt)	0.28	3.18	3.46		
	Zn (%)	3.30	3.30	3.30		
Resources	Commodity	Measured Mineral Resources 2017	Indicated Mineral Resources 2017	Measured /Indicated Mineral Resources 2017	Inferred Mineral Resources 2017	
	(Mt)	0.28	3.86	4.41	16.35	
	Zn (%)	3.70	3.50	3.50	3.40	

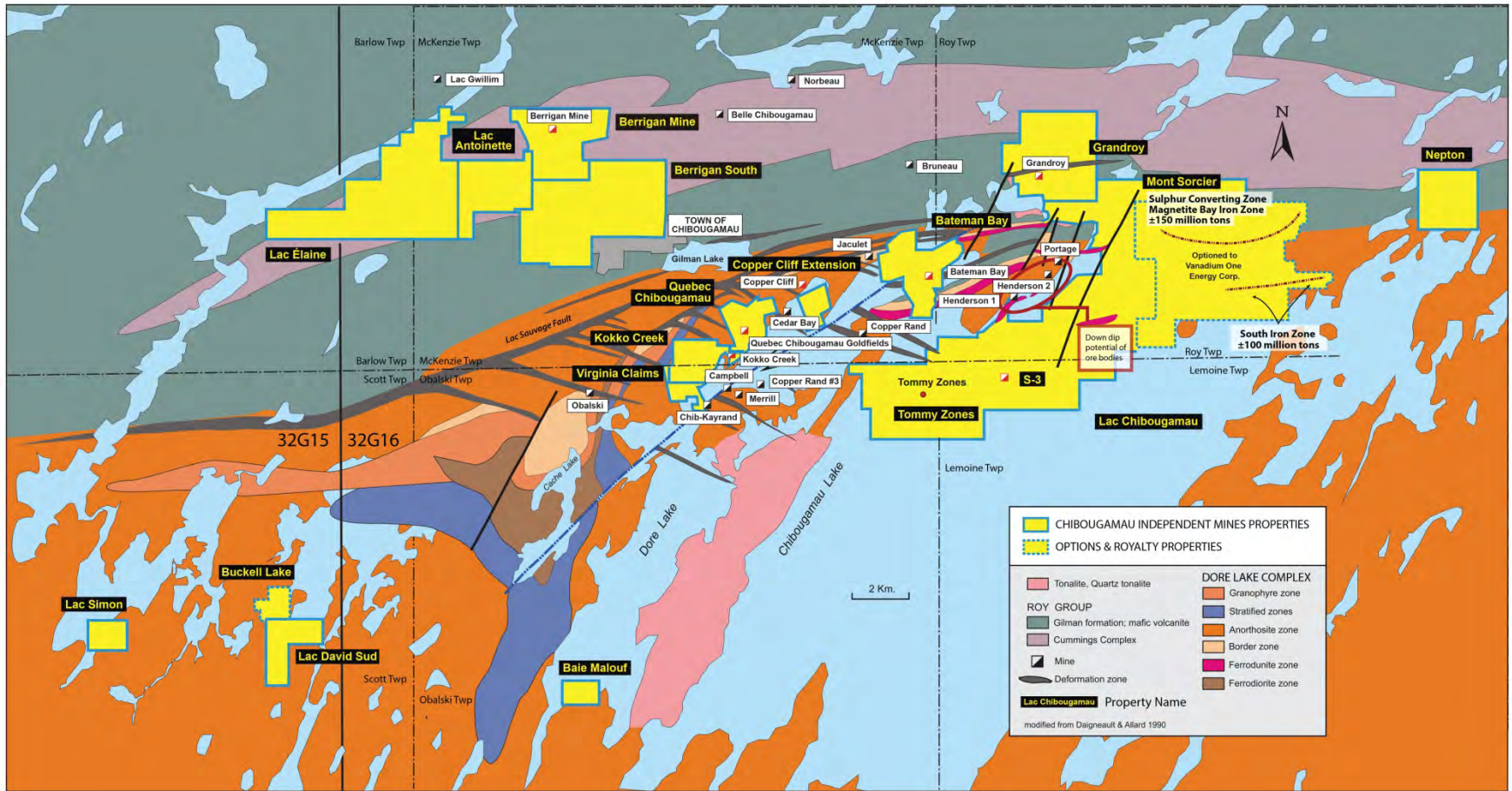
Simple, Open-Cut Mining Operation



- **Proven and probable resources**
11,662,000 t @ 1.03% Li₂O
1,636,000 t Spodumene concentrate
- **Simple mining method**
Truck and shovel operation
- **Competitive mining costs**
\$3.23/tonne avg LOM
\$19.40/tonne cash operating cost
- **Low development capex** of \$89.9 M
- **Life of mine** – 18 years
87.4 K t/yr Li₂O concentrate
- **Large, thick tabular body**
LOM waste to ore ratio 6.95:1
- **Production second half 2020**

Sayona Mining Limited Investor Presentation (see disclaimer)

Chibougamau Area Royalty Property, Quebec



- 5 former copper-gold mines
- 3 extensions of copper-gold mines
- 2 unmined deposits (1 Cu, Au, - 1 Zn, Au, Ag)
- +273 million tonnes, Iron, Titanium, Vanadium deposits
- Numerous drill-ready targets

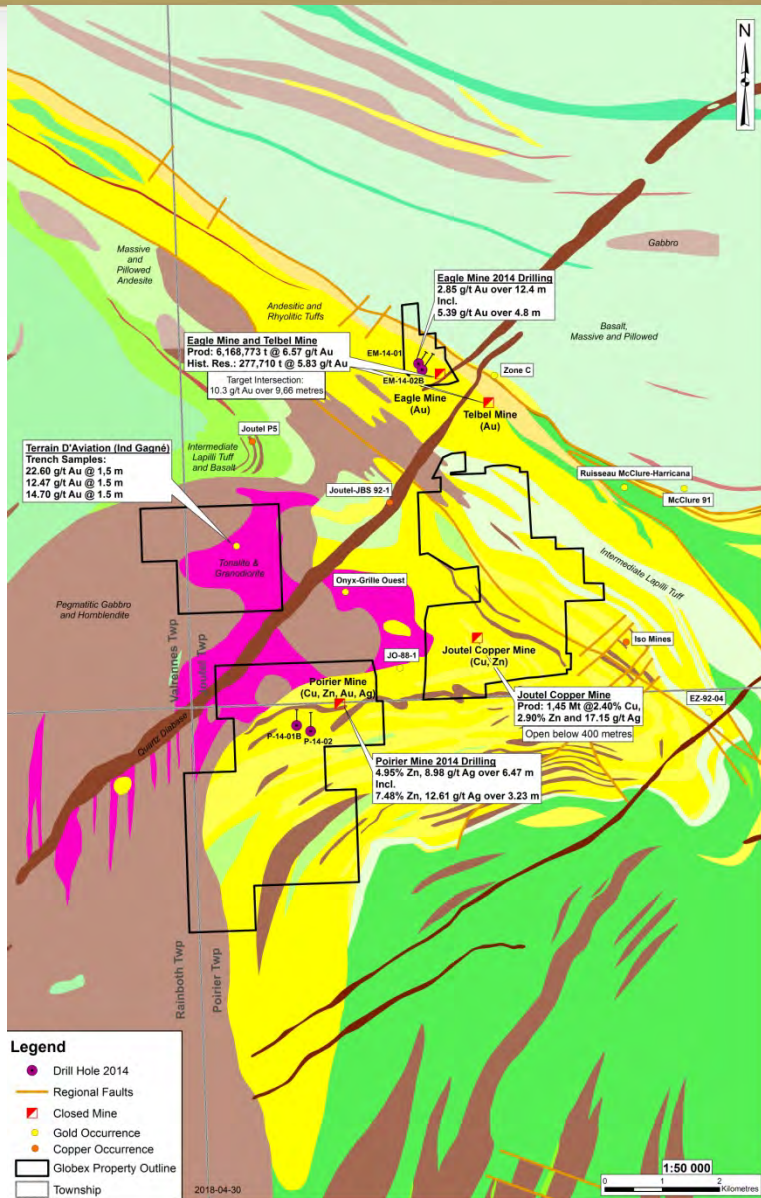
Historical Production
47.6 Million Tons

Significant Gold Intersections Within Previous Drilling Surface diamond drill holes Berrigan Property 32G16

Hole #	From	To	Interval	% Zn	% Cu	Au g/t	Ag g/t
A-005	131.4 m	140.2 m	8.8 m	5.70%		6.96 g/t	
A-010	97.3 m	105.2 m	7.9 m	4.43%		4.94 g/t	25.36 g/t
A-016	18.9 m	21.2 m	2.3 m	1.51%		6.43 g/t	
	76.2 m	77.7 m	1.5 m	3.45%		8.91 g/t	
A-061	91.6 m	100.6 m	9.0 m	3.76%	0.16%	3.00 g/t	17.24 g/t
	107.1 m	115.7 m	8.6 m	6.15%	0.17%	8.14 g/t	39.70 g/t
A-062	59.3 m	61.1 m	1.8 m	6.92%		4.62 g/t	17.14 g/t
A-063	113.7 m	114.3 m	0.6 m	17.55%		49.23 g/t	404.64 g/t
	129.4 m	132.8 m	3.4 m	8.86%		8.88 g/t	68.16 g/t
	138.9 m	141.5 m	2.6 m	4.69%		4.04 g/t	11.14 g/t
A-065	121.6 m	125.7 m	4.6 m	7.67%		6.08 g/t	21.56 g/t
	139.8 m	144.5 m	4.7 m	2.80%		3.55 g/t	7.64 g/t
	164.7 m	167.2 m	2.5 m	3.13%		6.95 g/t	15.44 g/t
A-066	100.6 m	101.8 m	1.2 m	22.90%		36.65 g/t	39.73 g/t
	159.8 m	168.8 m	9.0 m	6.26%		5.19 g/t	19.60 g/t
A-070	157.1 m	158.2 m	1.1 m	16.75%		10.96 g/t	
A-072	188.7 m	190.9 m	2.2 m	5.08%		3.13 g/t	
A-073	144.8 m	145.1 m	0.3 m	27.90%		32.88 g/t	
A-076	126.3 m	129.8 m	3.5 m	11.07%		3.02 g/t	
A-083	94.3 m	96.3 m	2.0 m	4.45%		3.79 g/t	10.34 g/t
	119.4 m	132.6 m	13.2 m	4.99%		2.88 g/t	15.91 g/t
A-084	130.3 m	142.8 m	12.5 m	4.58%		5.10 g/t	17.18 g/t
A-086	50.9 m	52.1 m	1.2 m	7.00%		15.07 g/t	59.60 g/t
A-103	56.4 m	59.4 m	3.0 m	5.84%		11.61 g/t	

Hole #	From	To	Interval	% Zn	% Cu	Au g/t	Ag g/t
U-02	44.9 m	45.6 m	0.7 m	2.95%		17.81 g/t	89.74 g/t
	90.4 m	91.4 m	1.0 m	13.80%		26.72 g/t	58.91 g/t
	95.8 m	108.7 m	12.9 m	5.75%		3.11 g/t	15.17 g/t
U-03	8.2 m	16.6 m	8.4 m	13.09%		6.98 g/t	20.71 g/t
	49.4 m	64.0 m	14.4 m	8.69%		3.41 g/t	17.49 g/t
U-04	17.4 m	19.7 m	2.3 m	12.77%		4.60 g/t	14.65 g/t
	85.9 m	86.6 m	0.7 m	7.05%		37.68 g/t	78.09 g/t
U-09	71.8 m	75.8 m	4.0 m	2.32%		4.32 g/t	12.43 g/t
SU-23	2.8 m	10.6 m	7.8 m	3.98%		3.33 g/t	20.54 g/t
SU-52	0.0 m	5.0 m	5.0 m	3.88%		3.01 g/t	19.82 g/t
SU-59	0.0 m	4.1 m	4.1 m	5.40%		3.51 g/t	31.04 g/t
TA-87-27	31.1 m	32.3 m	1.2 m	5.60%		17.98 g/t	37.33 g/t
TA-87-40	81.1 m	83.5 m	2.4 m	10.05%		2.96 g/t	50.05 g/t
	91.4 m	94.2 m	2.8 m	10.82%		3.23 g/t	19.19 g/t
TA-90-50	65.5 m	70.1 m	4.6 m	4.12%		6.78 g/t	10.12 g/t
	84.6 m	87.5 m	2.9 m	3.90%		3.20 g/t	
	95.5 m	106.7 m	11.2 m	10.39%	0.10%	2.54 g/t	19.26 g/t
	114.0 m	129.5 m	15.5 m	6.57%	0.10%	8.05 g/t	23.58 g/t
TA-90-51	197.4 m	200.0 m	2.6 m	5.39%	0.21%	3.52 g/t	20.10 g/t
TA-90-52	201.2 m	203.3 m	2.1 m	5.21%		5.70 g/t	11.60 g/t
TA-90-56	81.0 m	84.4 m	3.4 m	5.75%		4.06 g/t	
	164.4 m	166.9 m	2.5 m	5.23%		6.18 g/t	
	215.7 m	219.6 m	3.9 m	6.74%		3.95 g/t	
TLT-09	247.4 m	249.7 m	2.3 m			4.28 g/t	

Joutel Compilation Map, Quebec



- Two former Copper, Zinc, Silver Mines (Poirier and Joutel Copper)
- One Former Gold Mine (Eagle Mine)
- Large exploration package including mines, showings and zones of alteration
- Known Resources:
 - **Joutel Mine:** 242,800 t at 10.37% Zn
 - **Poirier Mine:**
West & Q Zones – 1,400,863 T @ 1.24% Cu and 9.77% Zn
East Lens – 300,000 T @ 8.06% Zn
Main Zone – 534,000 T @ 2.5% Cu
 - **Eagle Mine:** 277,710 t @ 5.83 g/t Au

Note: All resources are historical and do not conform to current NI 43-101 standards and thus should not be relied upon

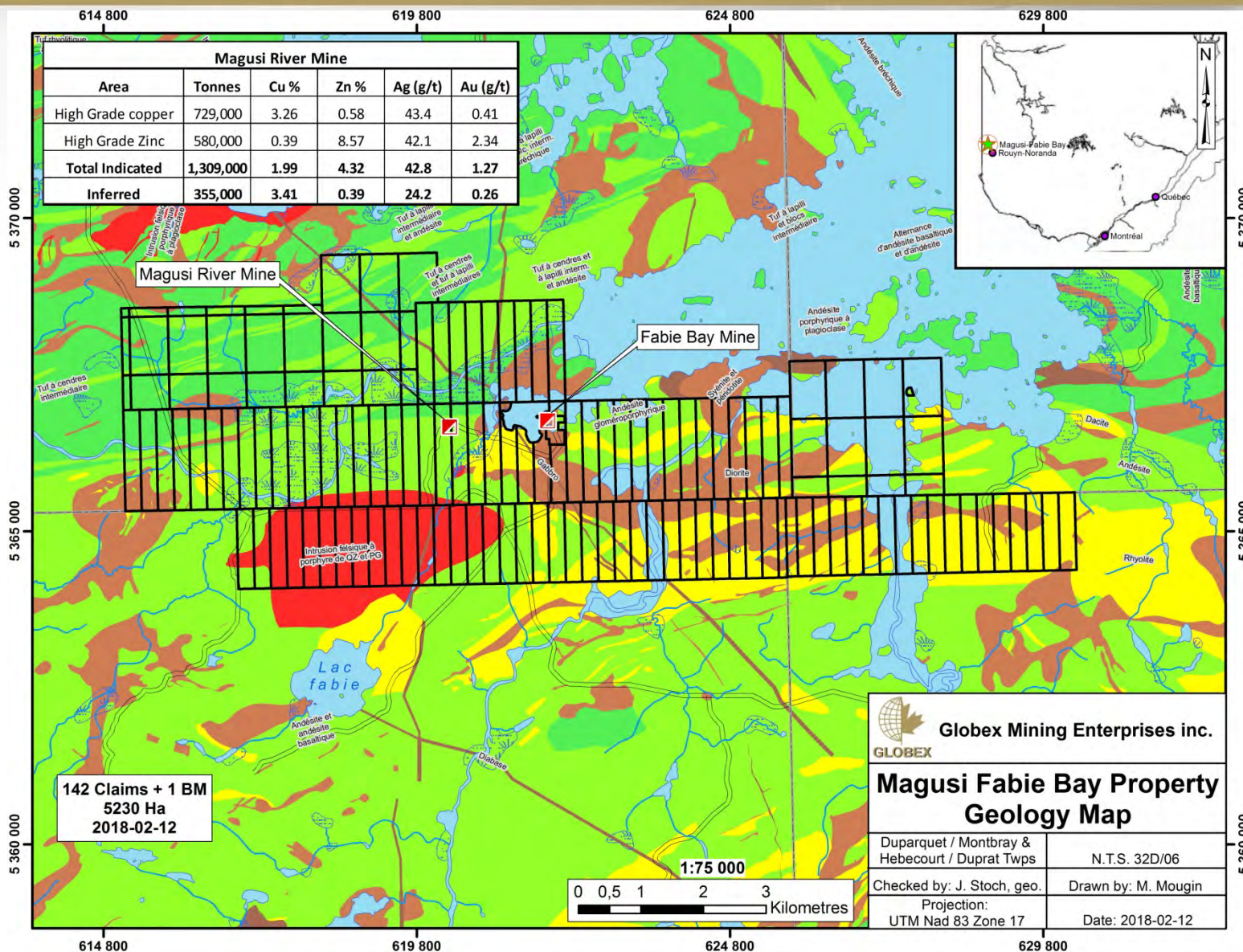
GLOBEX MINING ENTERPRISES INC.

JOUTEL PROJECTS (32E08)

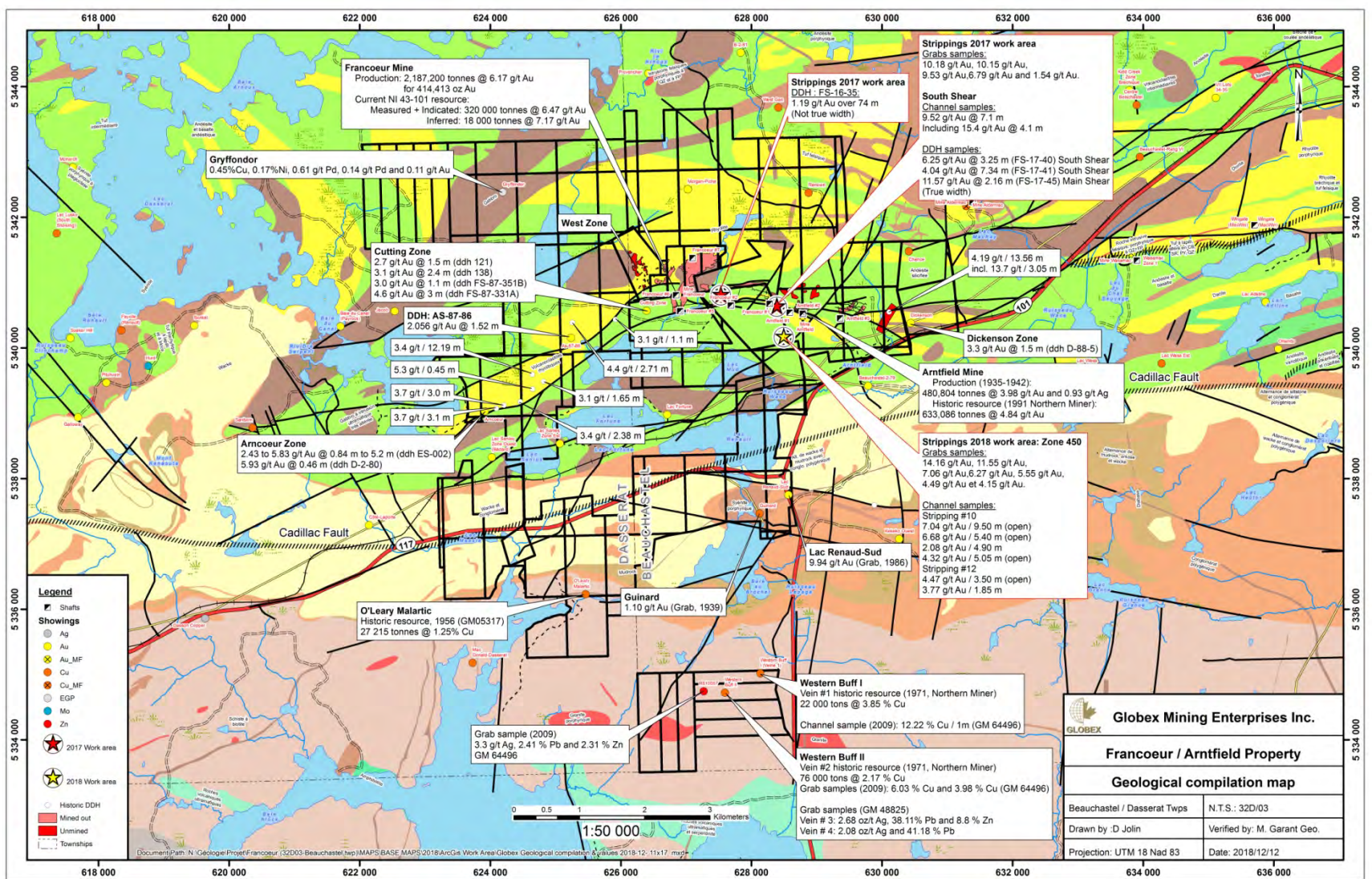
Joutel and Poirier Townships, Quebec

May 2018

Magusi-Fabie Bay Property, Quebec



Francoeur-Arntfield Mines Property



Francoeur Mine Infrastructure



Montalembert Project, Quebec

Photo # 1

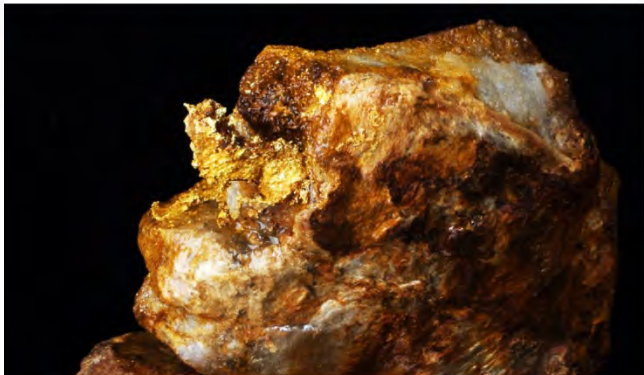
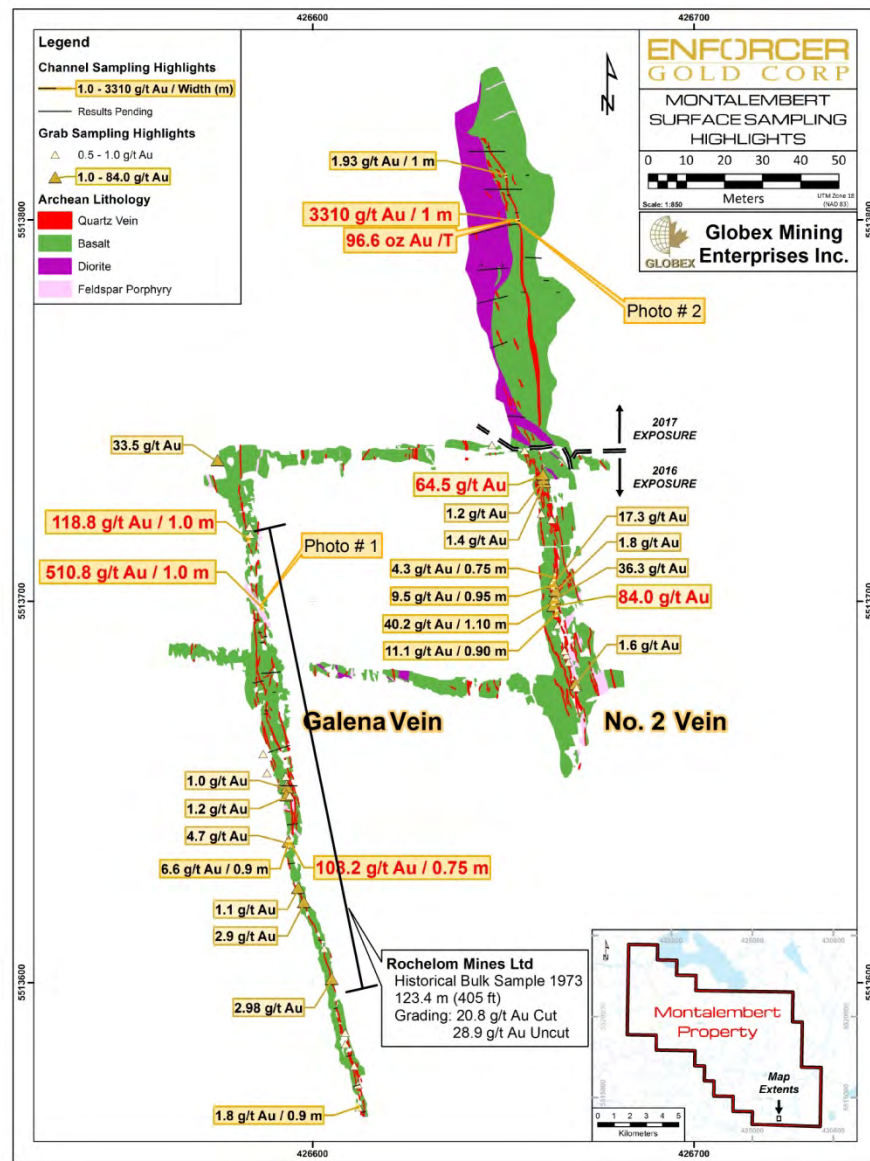
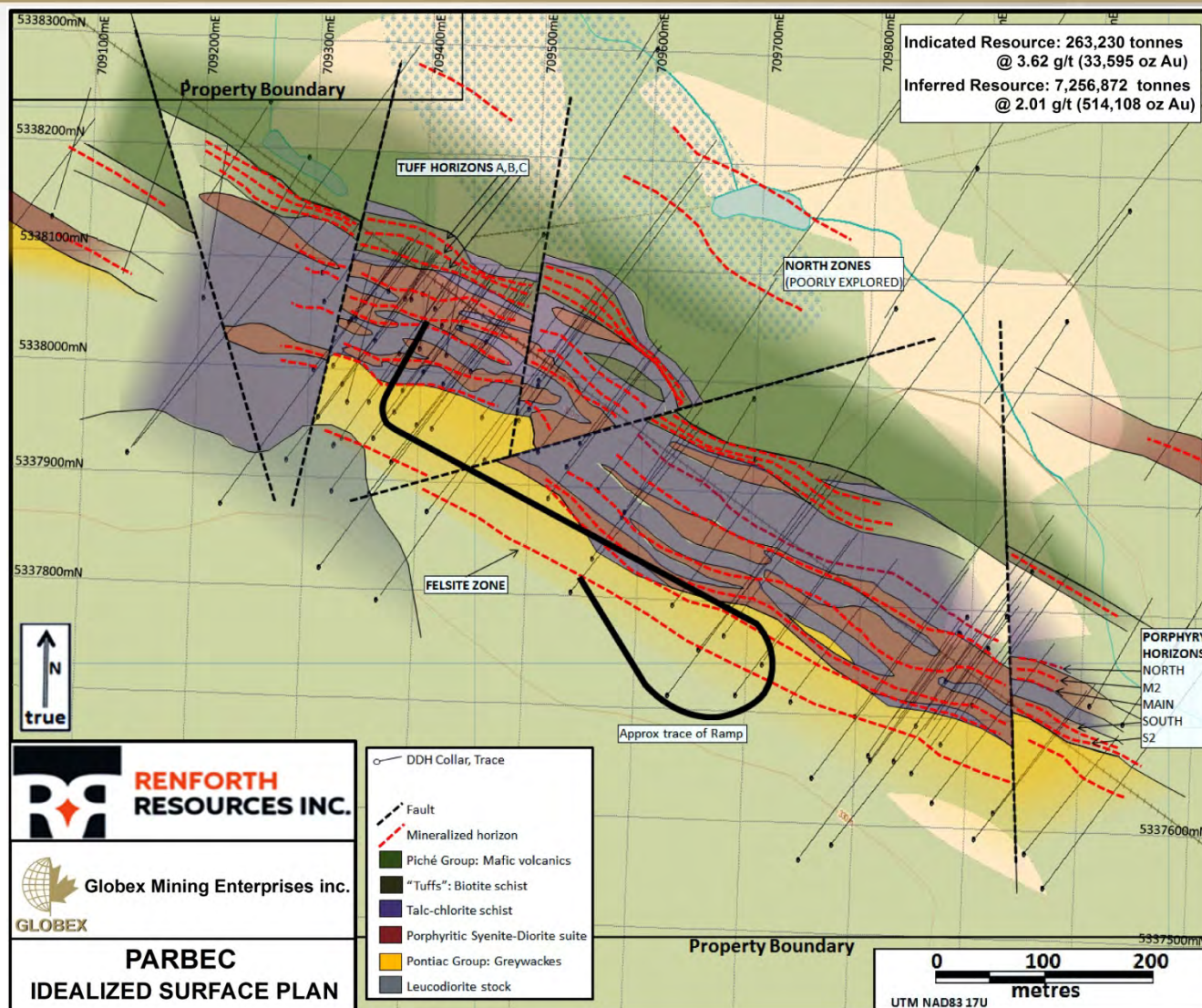


Photo # 2



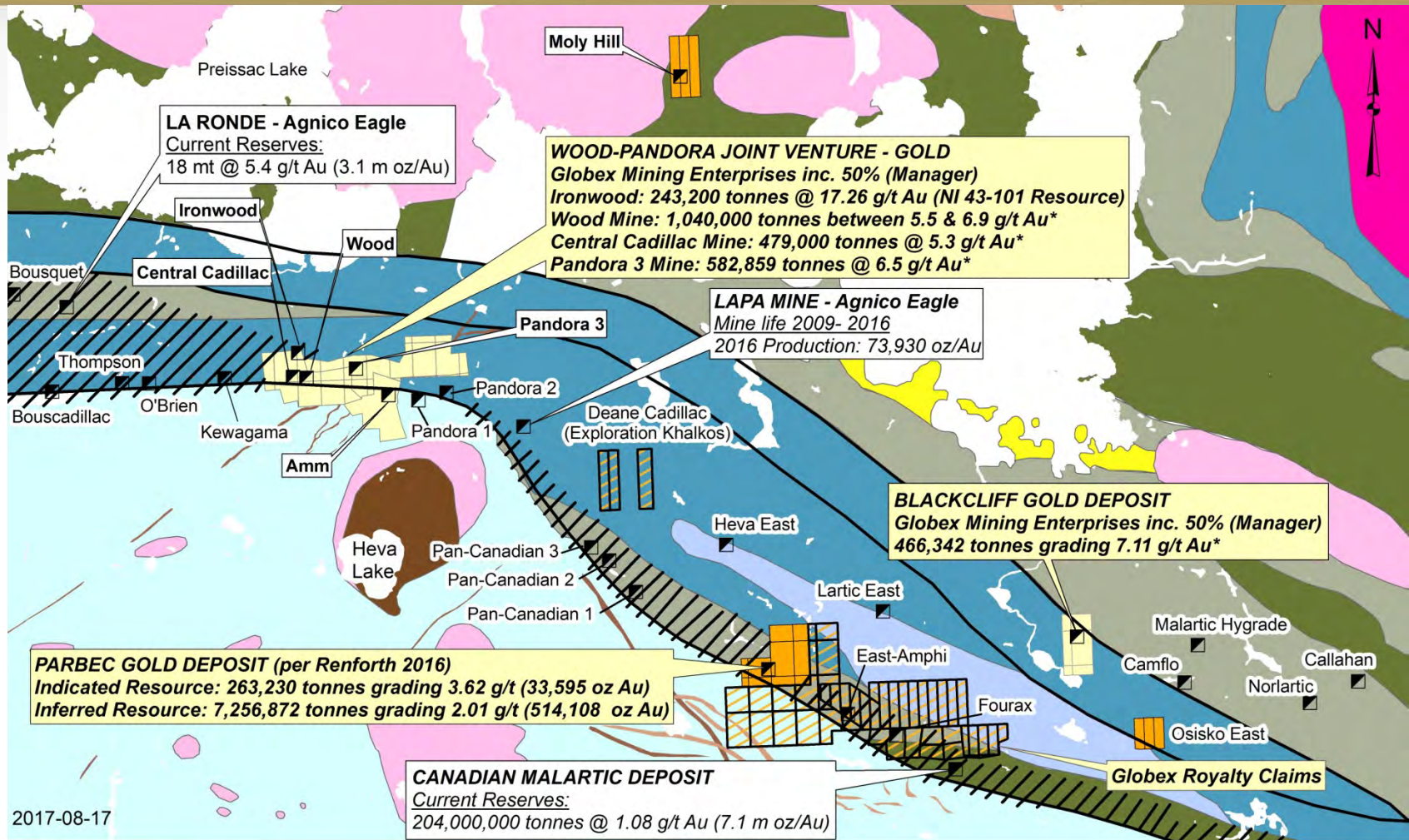
Parbec Property

Under Option with Renforth Resources Inc.



- Located approximately 5 km along strike to the Northwest of the large Canadian Malartic Gold Mine
- Underground access via a 580 m ramp
- 547,700 oz Au already defined
- Most of resource is within 200 m of surface
- Globex retains 2% GMR

Cadillac-Malartic Mining Camp, Quebec



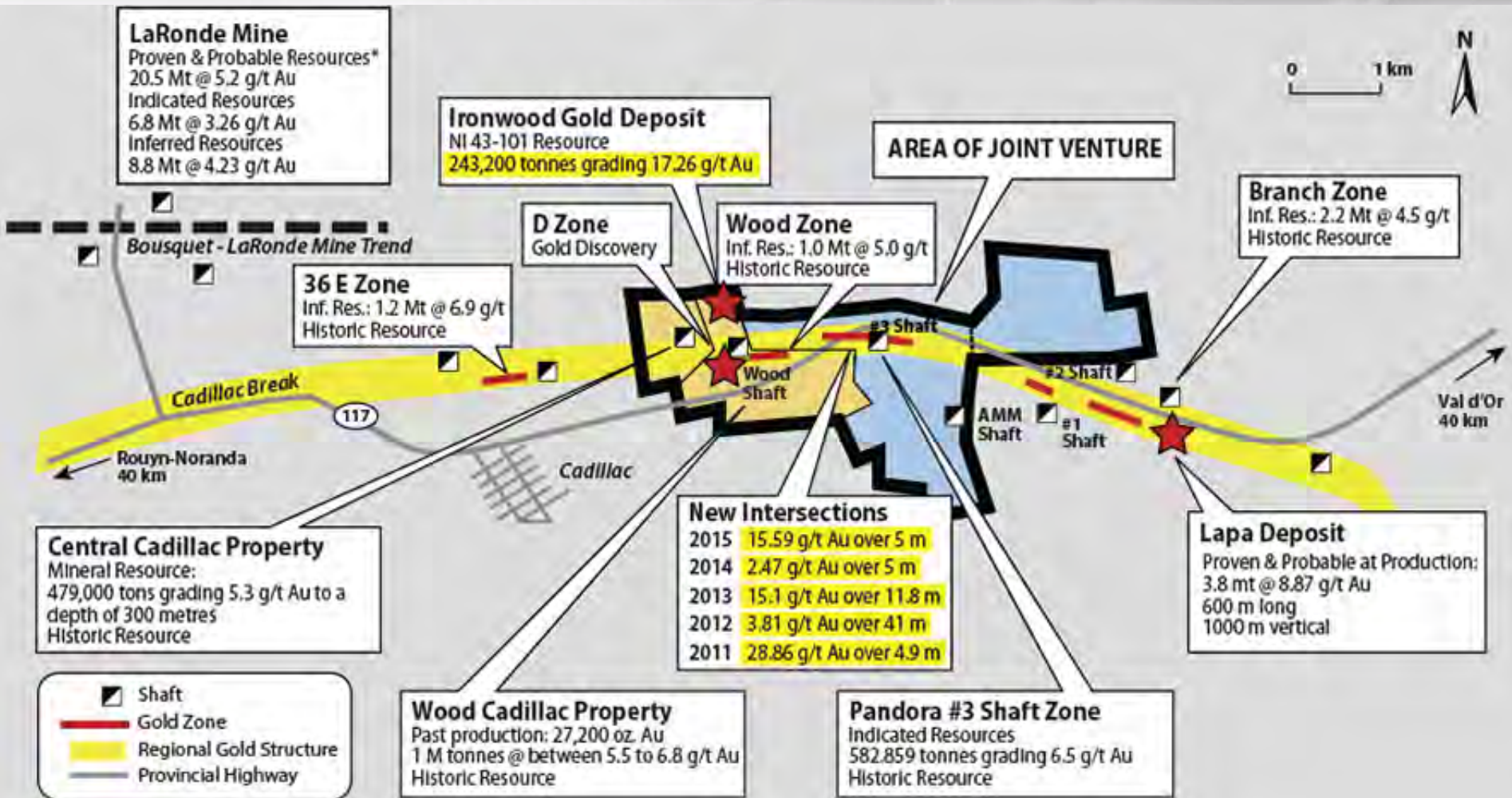
Légende

- Mine_Fermée
- Globex_Royalty
- Globex-JV
- Globex Properties

* Historic resources have not been verified by Globex's geologists and should not be relied upon.

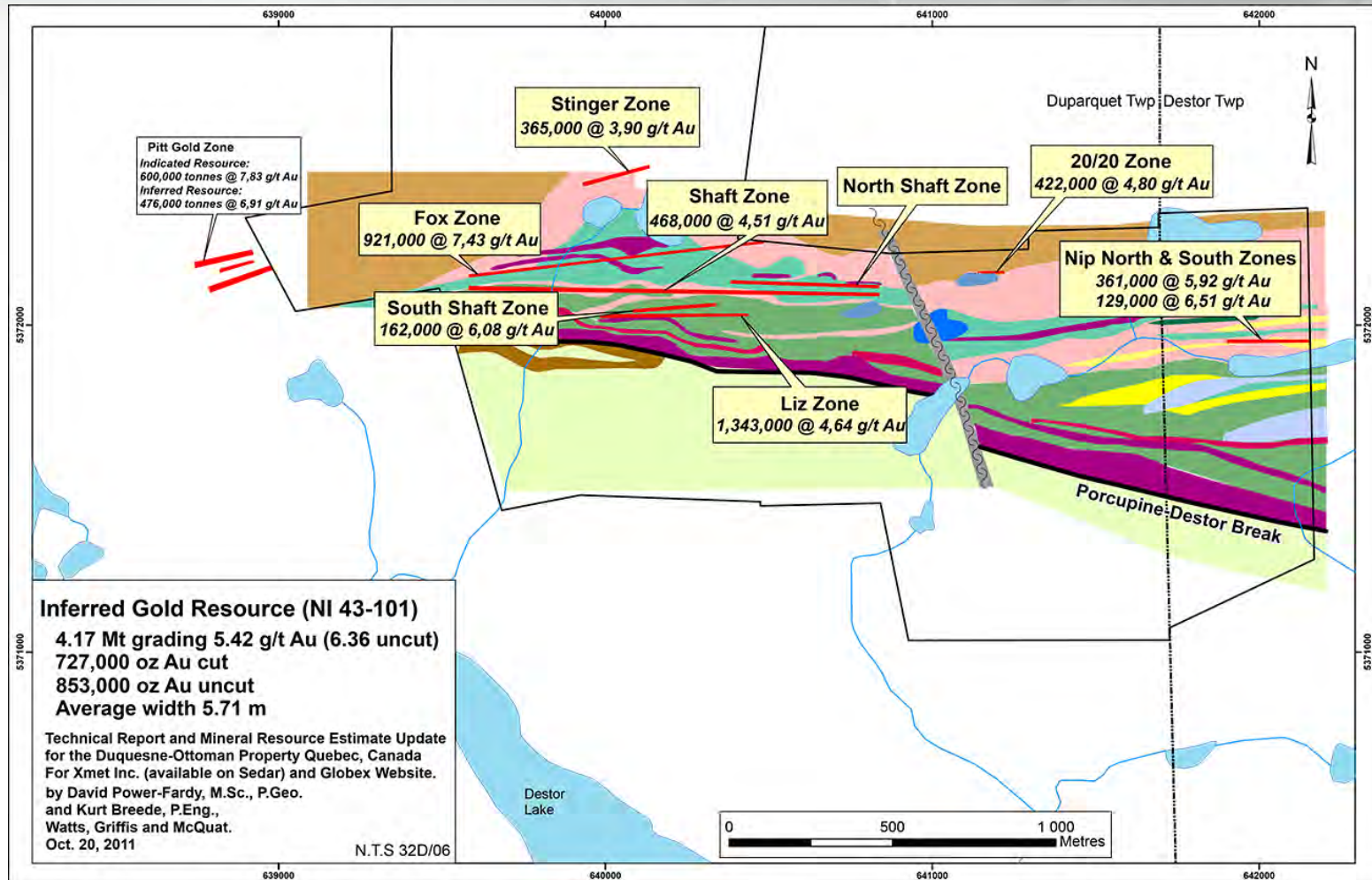
Cadillac Gold Camp, Quebec

(Wood-Pandora Joint Venture)

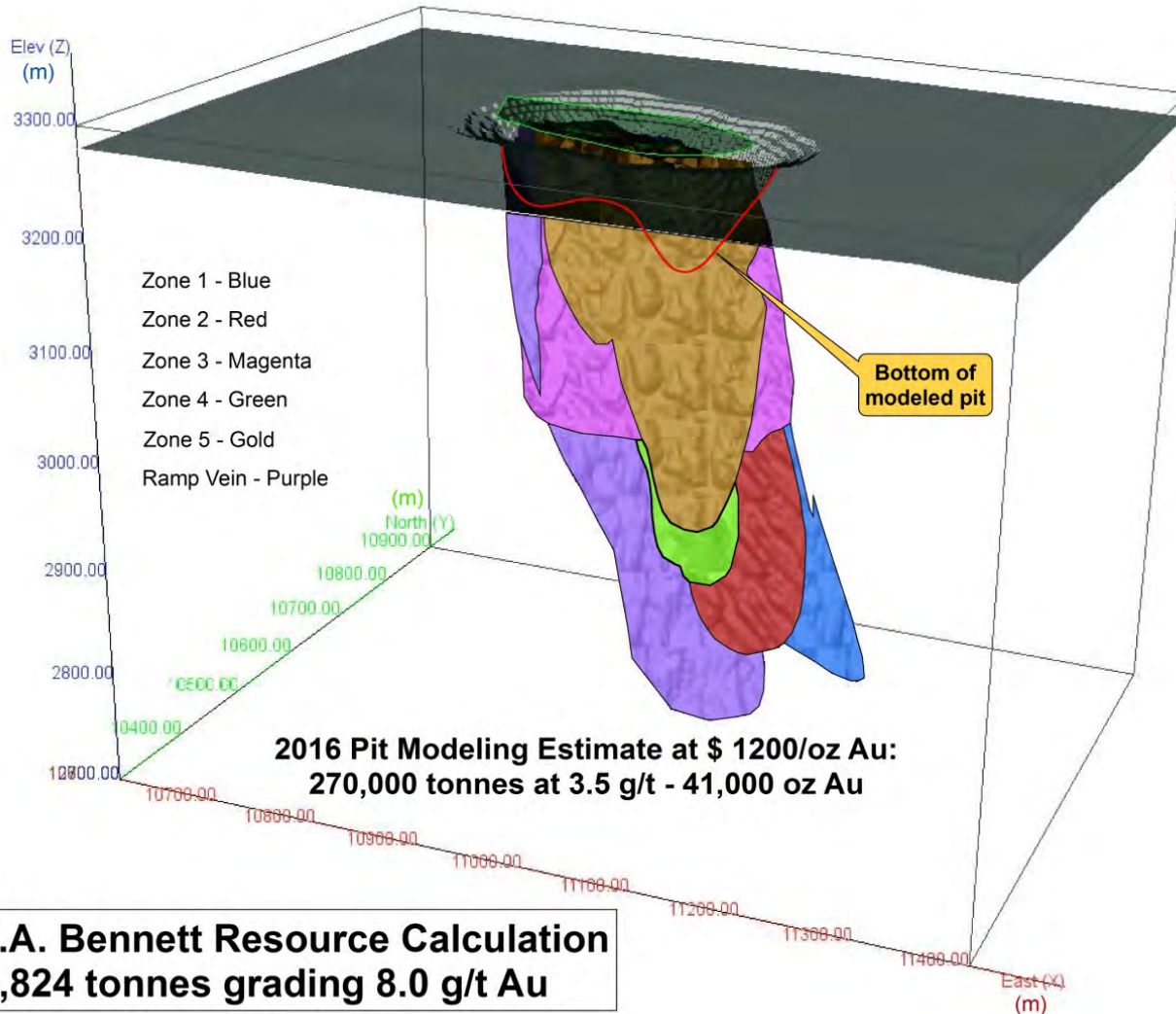


*Ref. Agnico Eagle Mines

Duquesne West, Quebec (50%)

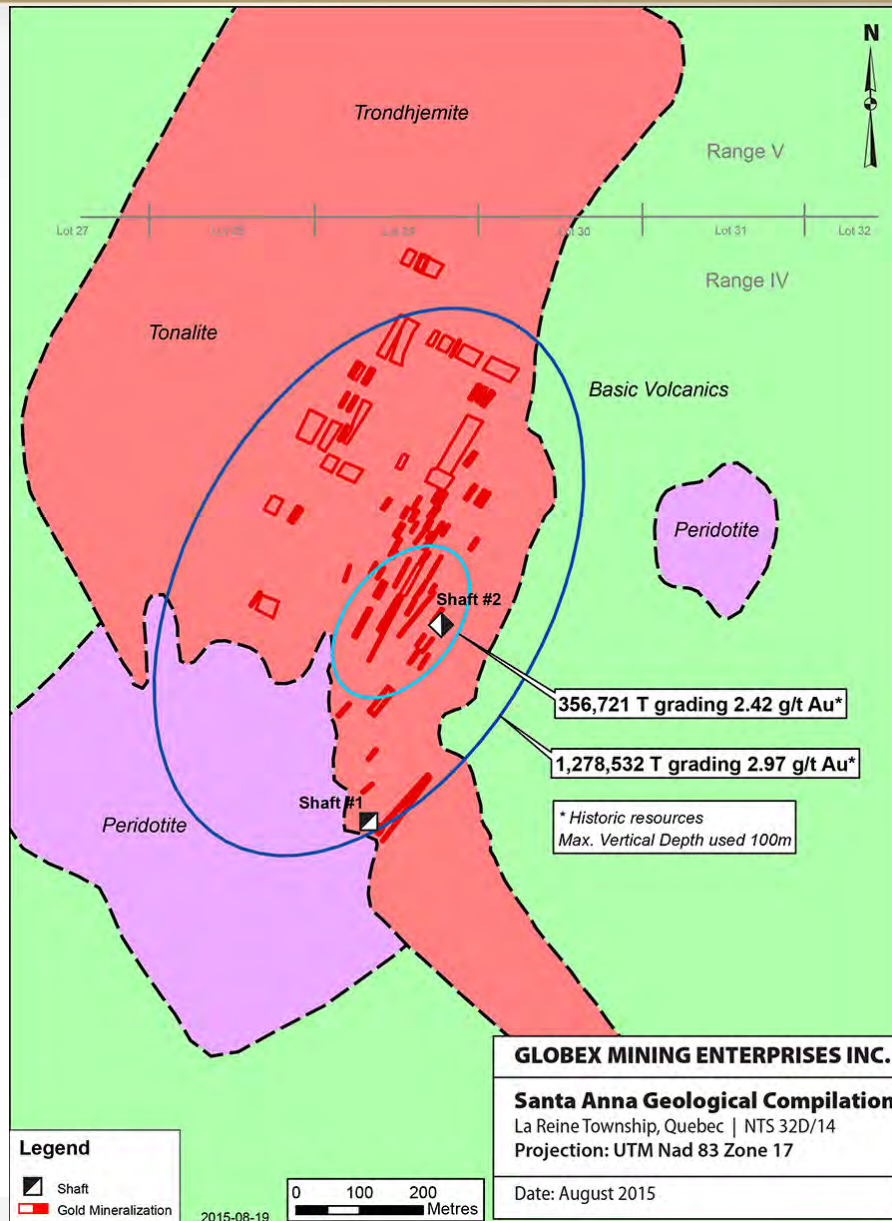


- Multiple gold zones adjoining and related to the Porcupine Destor Break
- Many gold zones open to depth



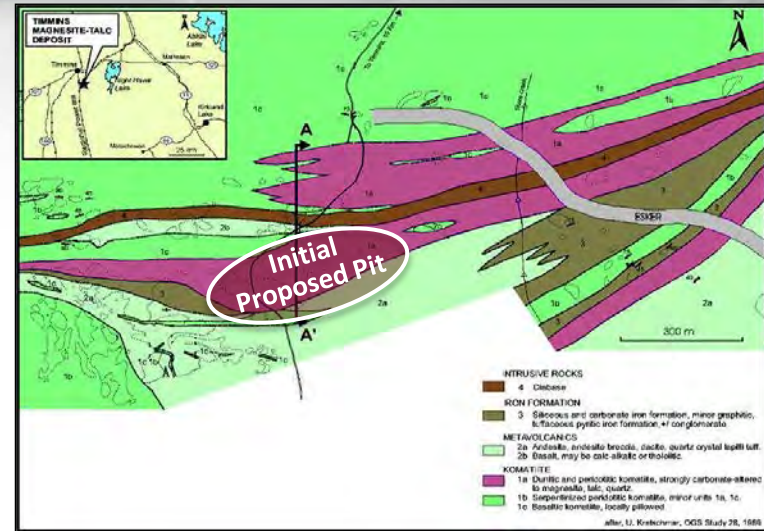
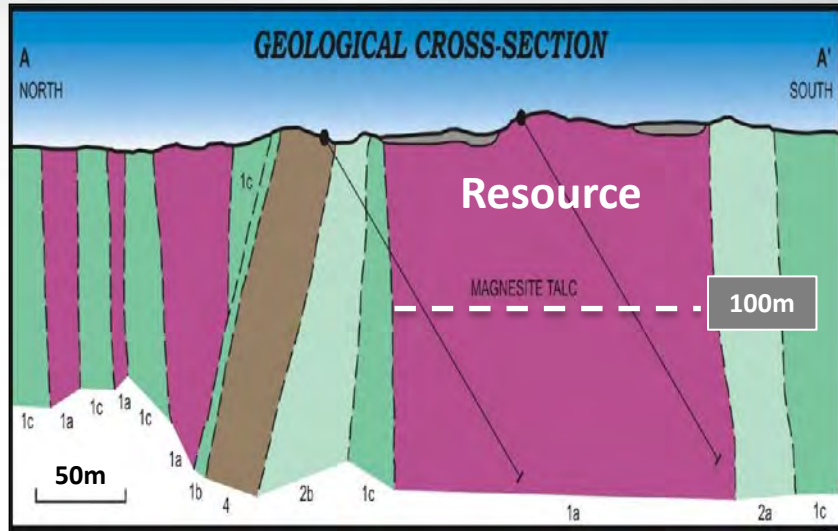
Source: RJK Exploration Ltd. 2016. Historical Non NI 43-101 Resources

Santa Anna Property, Quebec



- Surface exposed gold - silica zones
- Potential open pit?
- Potential fluxing ore?
- Accessible by paved and gravel, all season roads
- Minimal strip ratio
- Coarse free gold

Timmins Talc-Magnesite Project, Ontario

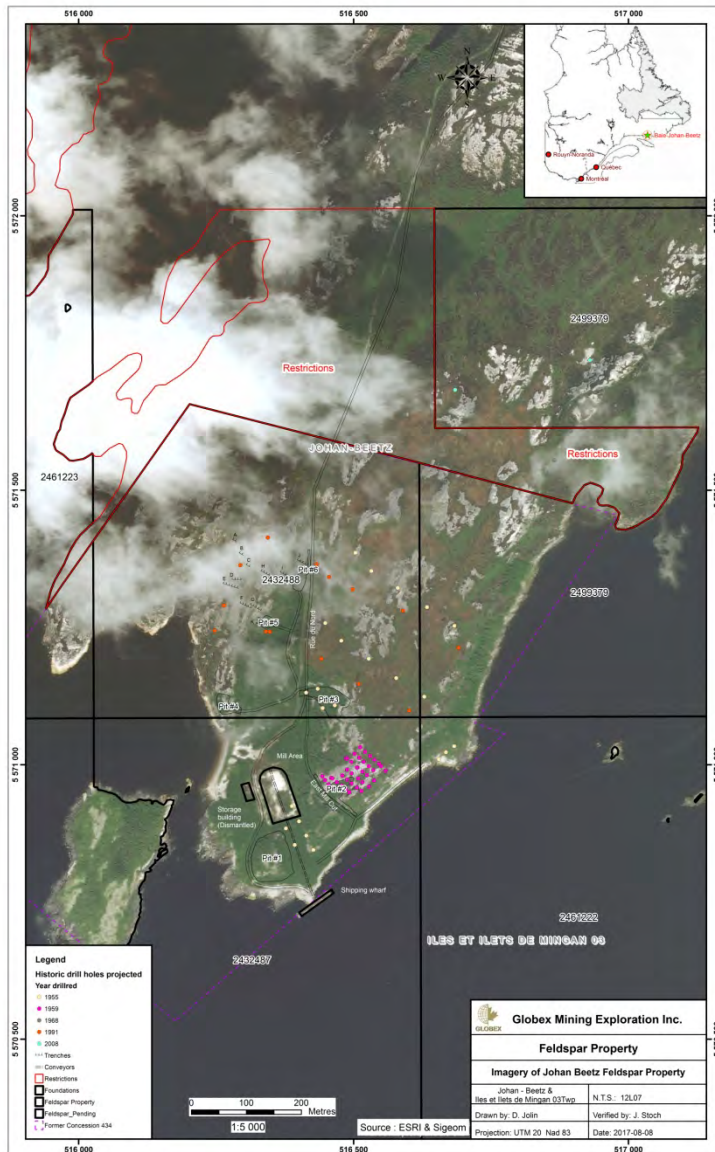


Resource Category	Tonnage (t)	Magnesite (%)	Talc (%)
Indicated	12,728,000	52.1	35.4
Inferred	18,778,000	53.1	31.7

NI 43-101 resources

- Open-pittable deposit
- Simple separation metallurgy
- No environmental negatives (Arsenic, asbestos, etc.)
- High quality (brightness) talc targeting highest value market niches – Plastics, cosmetics, etc.
- Near Timmins, Ontario (Skilled labour, transport, energy, etc)
- Saleable secondary product – MgO
- Targeting Wallboard Market among others
- Long mine life (+100 years)
- Mining Lease in place

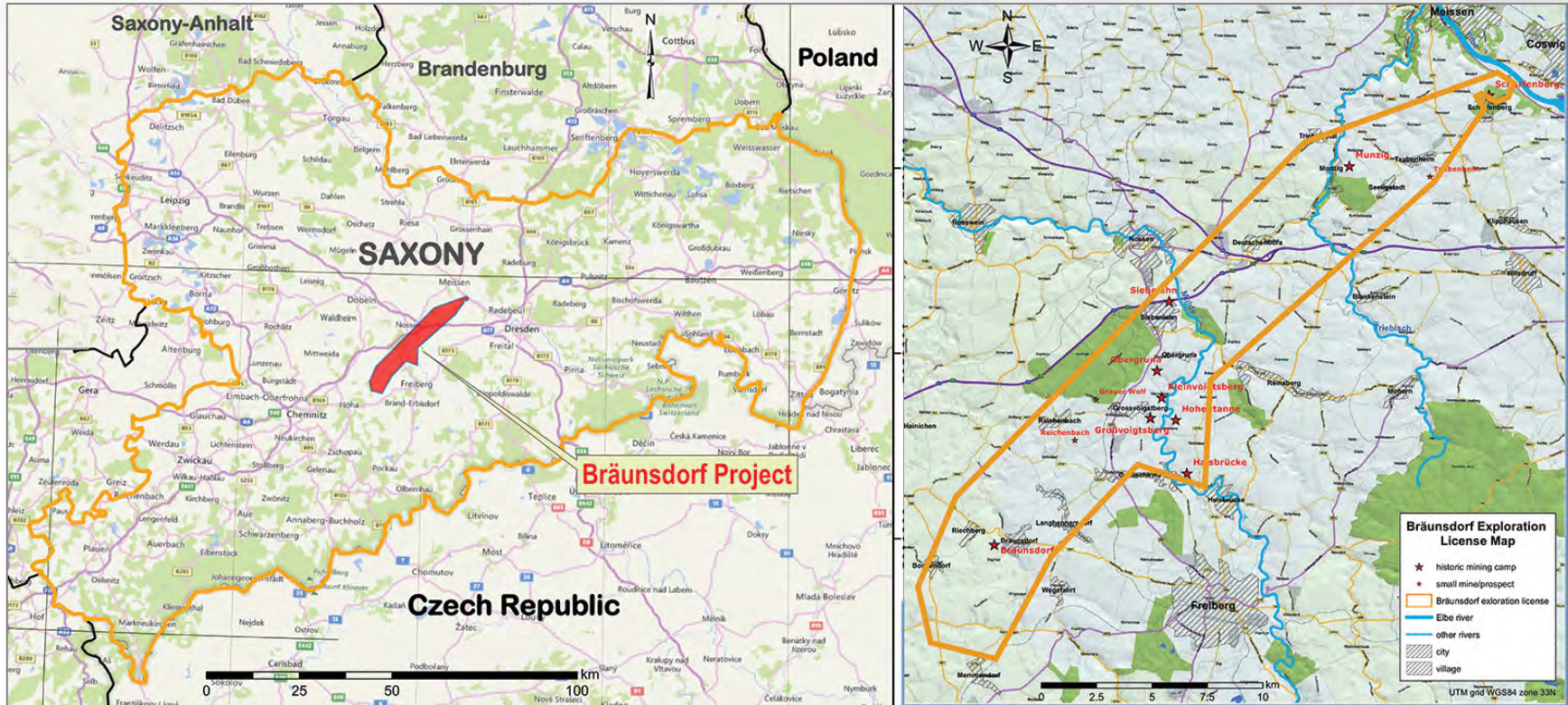
Feldspar Property, Johan Beetz, Quebec



- Globex's Holdings
 - ✓ 2.5 % Gross Metal Royalty
 - ✓ 2,000,000 EnerSpar shares
- Potassic Feldspar
 - ✓ Projected NA demand by 2020 is 250,000 tonnes
- Principal Uses
 - ✓ Ceramics
 - ✓ Tempered Glass

EnerSpar Corp - TSXV :ENER FSE : 5E0

Bräunsdorf Silver Project, Germany



Approximately US \$500,000,000 of historic SILVER production
750 Years of Intermittent Production
No Modern Exploration



Principal Exploration Office

Focus On The Value

- **FEW SHARES** outstanding and history of minimal stock dilution
- **EXPERIENCED**, fiscally prudent management
- **INCOME** from Royalties and Options
- **WE OWN** our property interests and exploration assets (offices, core facility, vehicles, core library, etc.)
- **NO DEBT**, funds available for exploration
- **LOW** Political Risk
 - Based in North America – QC, ON, NS, NB, Nev., Tenn., Wash.
- **SPECIALIZED**, Experienced Board of Directors
 - 3 senior geologists
 - 1 mining accountant
 - 1 senior finance professional



GLOBEX

Mining Enterprises Inc.



Thank You

Danke

Merci

Meegwetch

www.globexmining.com