

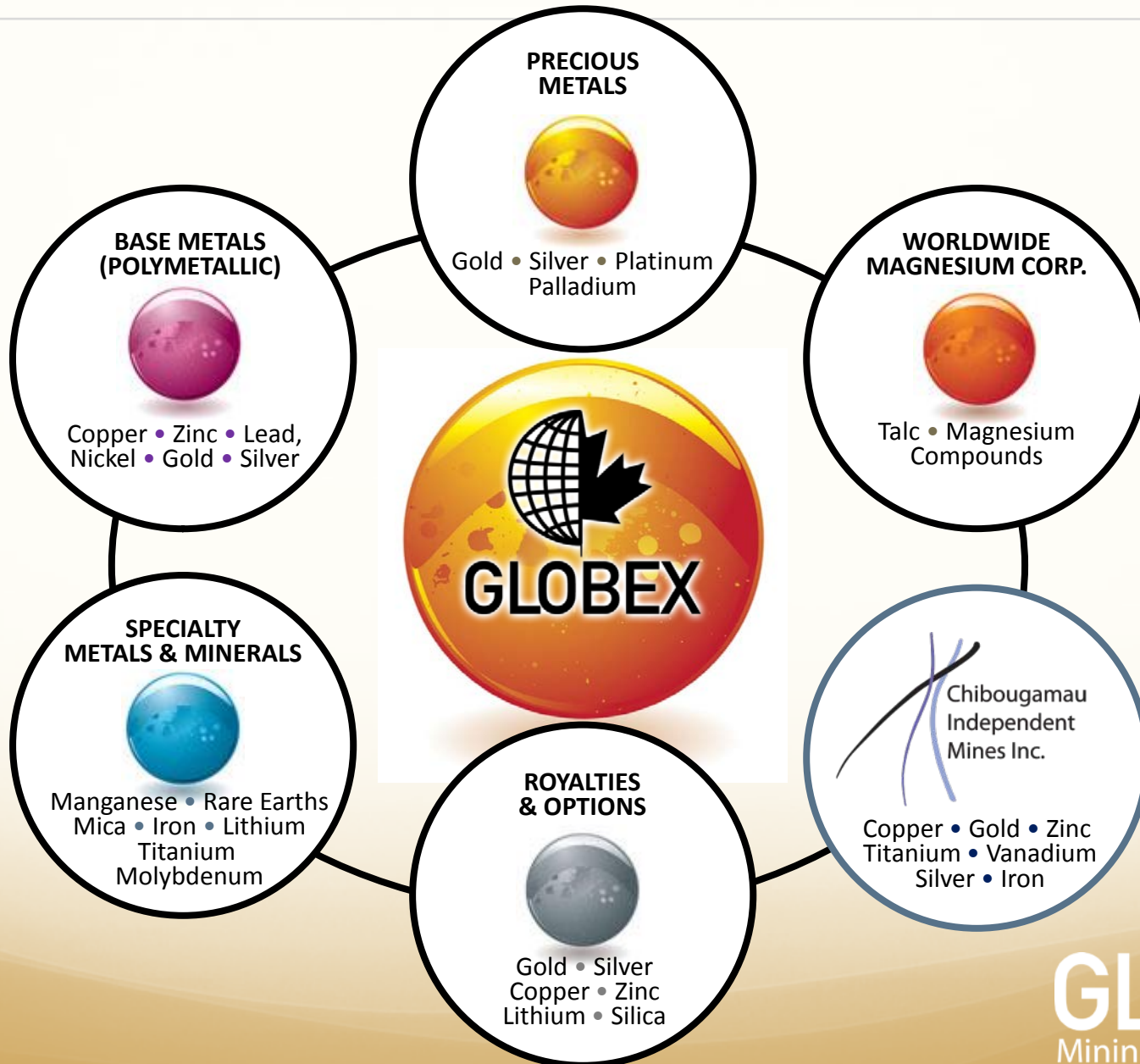


Forward-Looking Statements

Except for historical information, this presentation may contain certain “forward-looking statements”. These statements may involve a number of known and unknown risks and uncertainties and other factors that may cause the actual results, level of activity and performance to be materially different from the expectations and projections of Globex.

No assurance can be given that any events anticipated by the forward-looking information will transpire or occur, or if any of them do so, what benefits Globex will derive therefrom. A detailed discussion of the risk factors relating to Globex is available in Globex’s Annual Information Form, available at www.sedar.com.

At Home in North America



Globex Mining Enterprises Inc.

- Shares Issued 41,243,755 (no rollbacks)
 - Shares Fully Diluted 44,311,255
-

- Funds available for exploration
- No debt
- Own 100% of its property interests
- Based in North America. Primarily; Quebec, Ontario, Nova Scotia and New Brunswick
- Specialized and experienced Board of Directors composed of 3 senior geologists, 1 mining accountant and 1 senior finance professional



Stock Exchange Listings

GMX

Canada

Toronto

Germany

G1M

Xetra

Munich

Stuttgart

Berlin

Frankfurt

GLBXF

U.S.A

OTCQX International



GLOBEX
Mining Enterprises Inc.

Diversified Mineral Holdings

Precious Metals

- Au • Gold
- Ag • Silver
- Pt • Platinum
- Pd • Palladium

Base Metals

- Cu • Copper
- Zn • Zinc
- Ni • Nickel
- Pb • Lead

Specialty Metals

- REE • Rare Earths
- Fe • Iron
- Mn • Manganese
- Mo • Molybdenum
- U • Uranium
- Li • Lithium
- Hf • Hafnium
- Ce • Cerium
- Zr • Zirconium
- Y • Yttrium
- Nb • Niobium
- Ti • Titanium
- V • Vanadium

Industrial Minerals

- Magnesite
- Talc
- Phlogopite Mica
- Apatite
- Silica



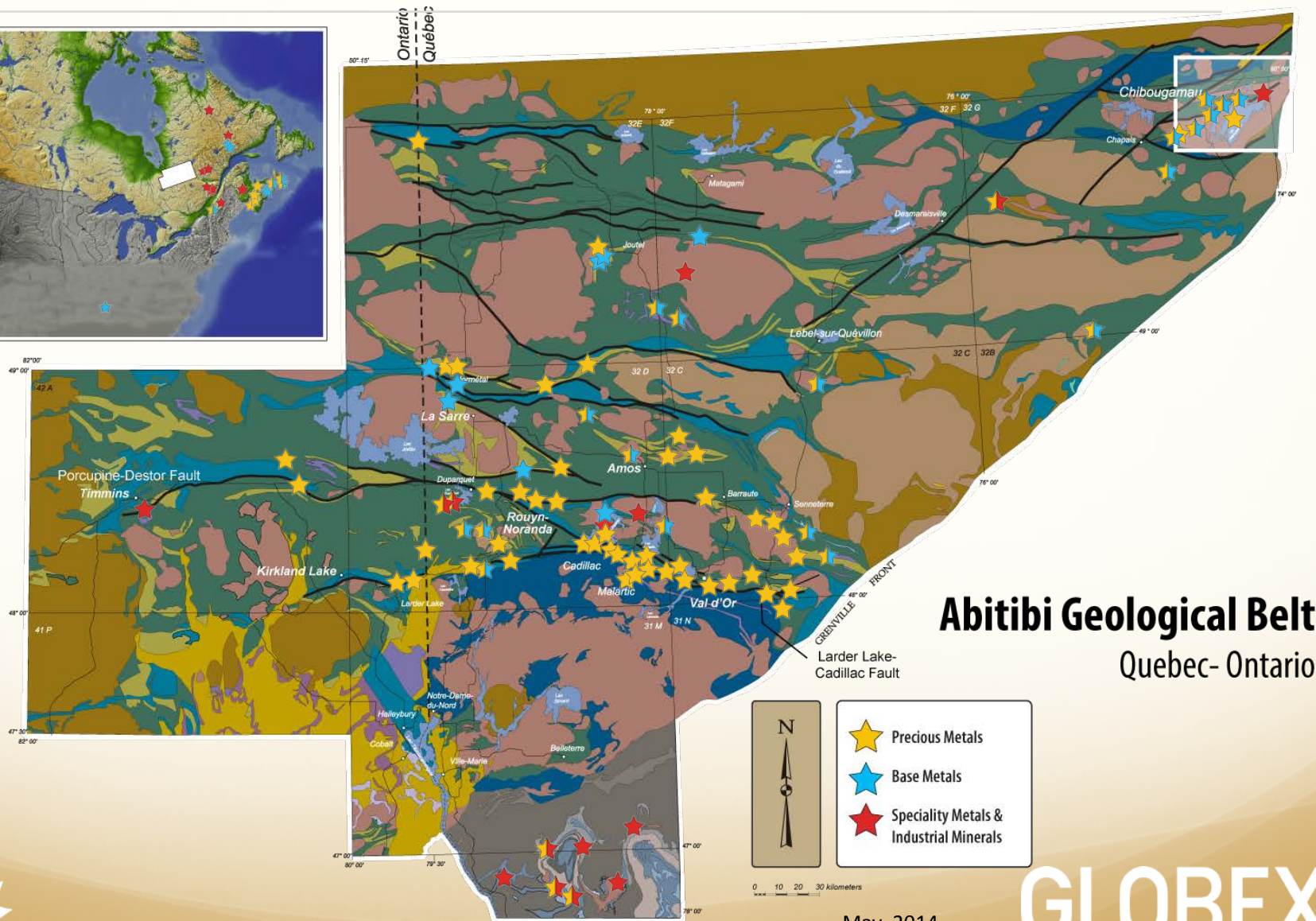
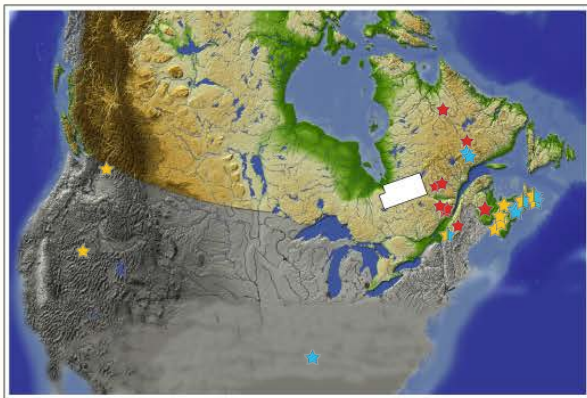


123	Properties
68	Precious Metals <ul style="list-style-type: none"> • Gold, Silver, Platinum, Palladium
39	Base Metals & Polymetallic <ul style="list-style-type: none"> • Copper, Zinc, Gold, Silver, Lead, Nickel
16	Specialty Metals & Minerals <ul style="list-style-type: none"> • Iron, Lithium, Magnesium Oxide, Manganese, Mica, Molybdenum, Rare Earths, Talc, Uranium, Titanium, Silica
42	Royalties
6	Active options <ul style="list-style-type: none"> • Cash payments • Share payments • Exploration & development expenditures • Gross metal royalty
50	Historical or NI 43-101 resources

Note: Some properties have been combined due to proximity or infill staking



Diversified Mineral Holdings



Abitibi Geological Belt
Quebec- Ontario

- ★ Precious Metals
- ★ Base Metals
- ★ Speciality Metals & Industrial Minerals

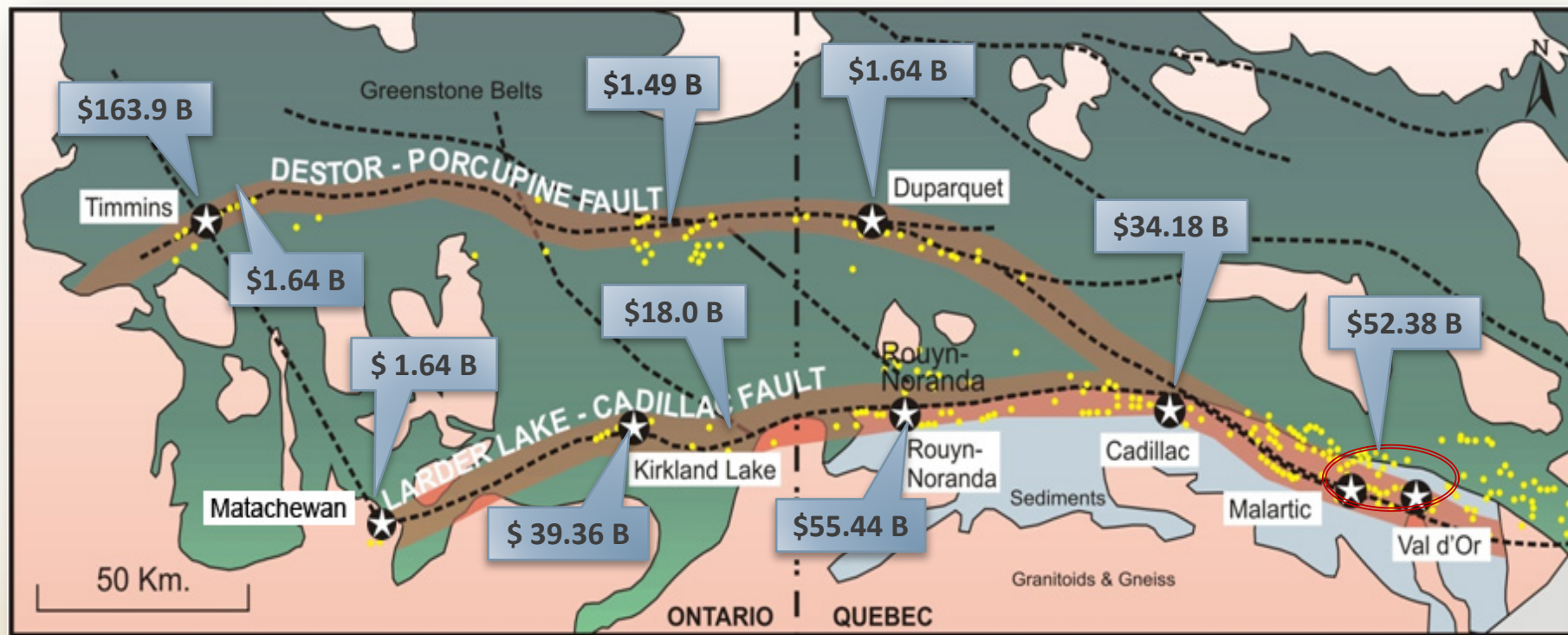
May, 2014

GLOBEX
Mining Enterprises Inc.



Historical Value of Production

Total: US \$ 370 Billion



Au 166.61 Million oz

Zn 28.0 Billion lb

Ag 635.8 Million oz

Cu 14.5 Billion lb

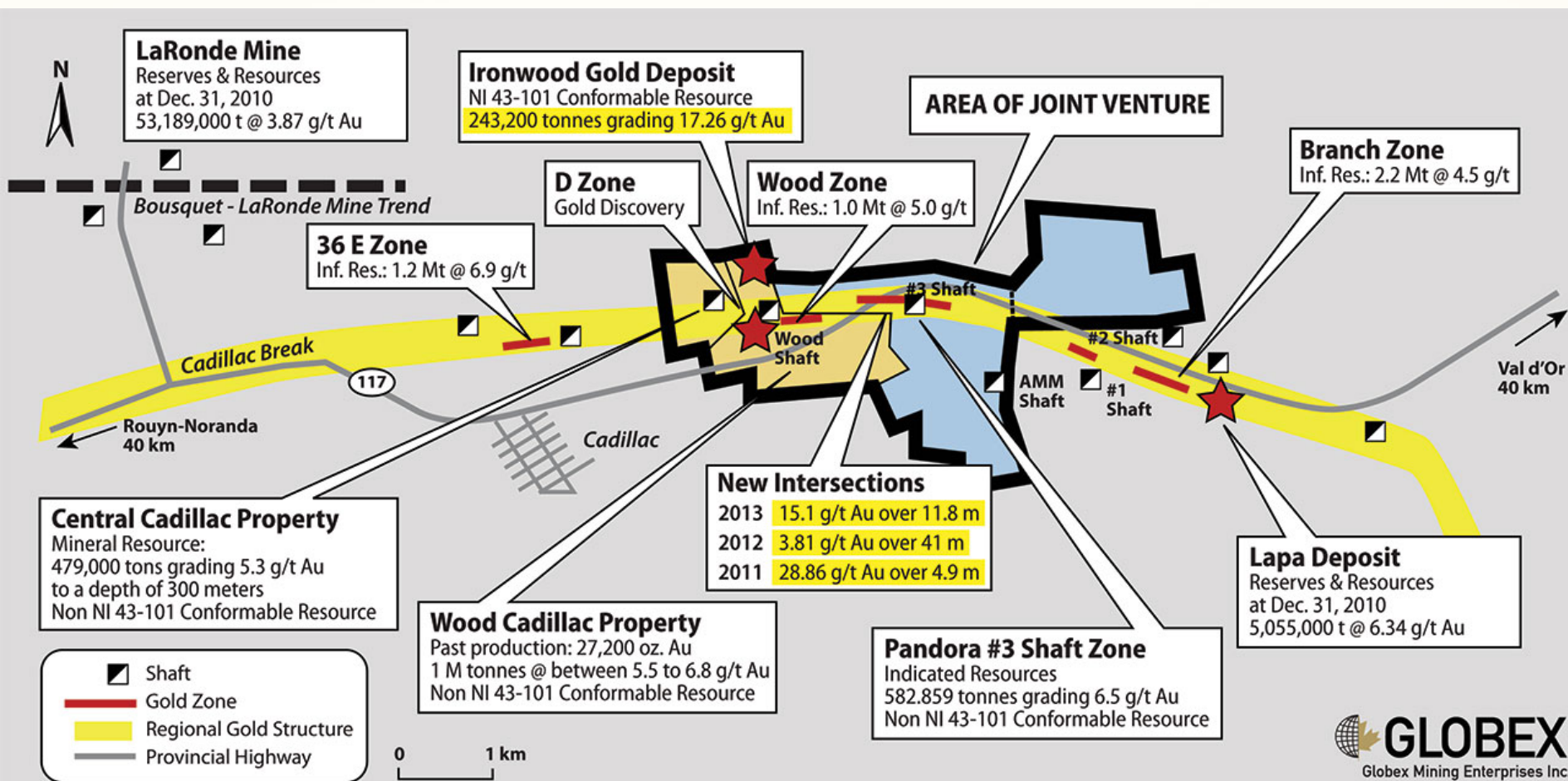
Metal Prices Used in Calculations

Au	\$ 1400.00/oz	Zn	\$ 0.82/lb
Ag	\$ 23.00/oz	Cu	\$ 3.30/lb



GLOBEX
Mining Enterprises Inc.

Cadillac Gold Camp (Wood-Pandora Joint Venture)



Recent-Select Wood-Pandora Drill Results

2011

Hole #	Length (m)	Au (g/t)
W10-80	2.0	5.21
W10-81	3.7	10.81
including	1.0	35.45
W10-82	2.9	14.71
Including	0.8	33.38
W10-83	1.3	12.99
W10-84	3.0	13.96
	3.8	7.71
including	1.1	23.35
W10-85	8.4	3.08
W10-87	4.3	4.32
	3.9	2.01
W-11-89	1.0	8.2
W-11-91	6.5	3.88
including	1.0	16.8
W-11-92	4.9	28.86
Including	1.1	121.70
	1.3	6.35
	1.0	6.60

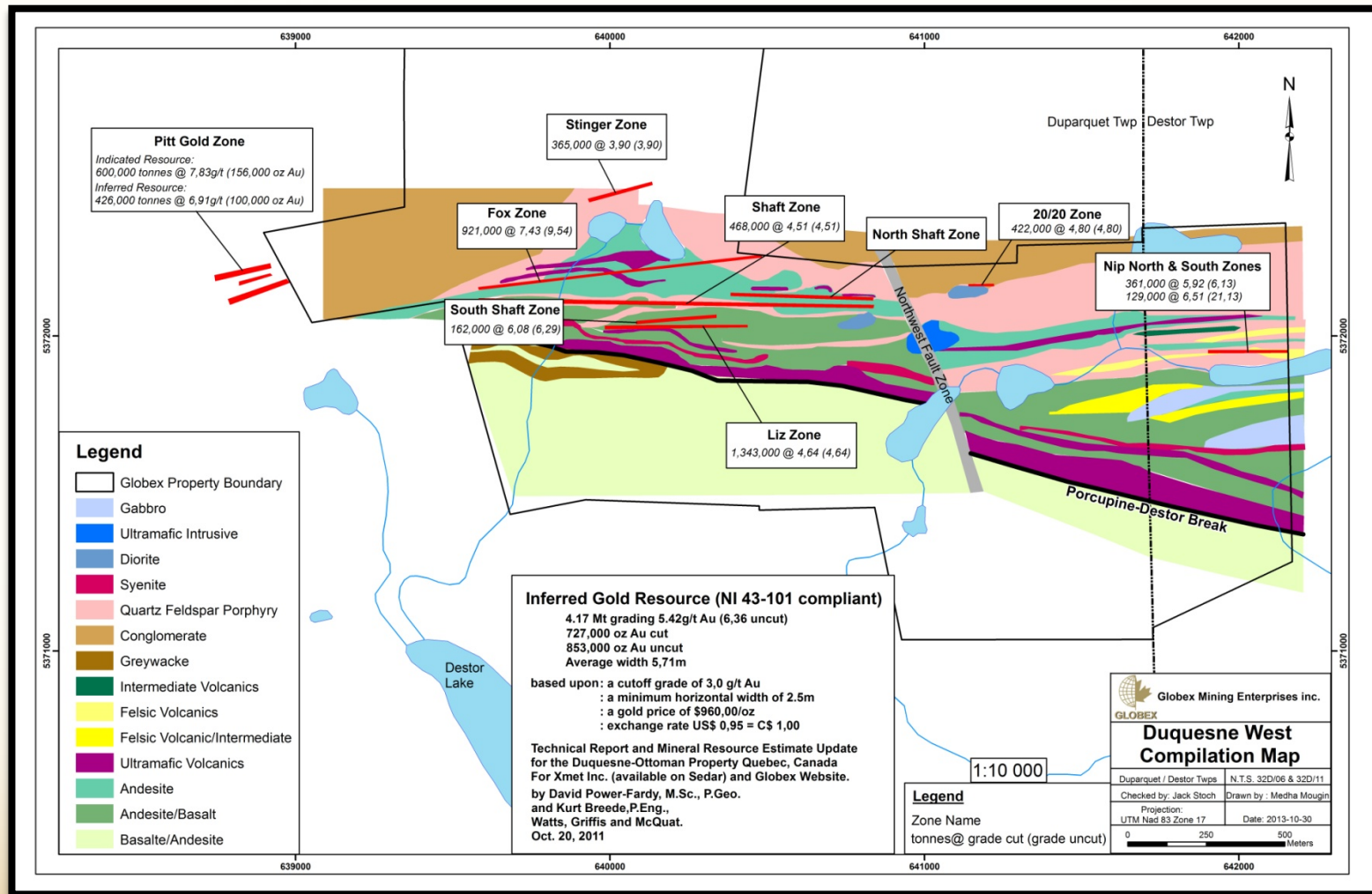
2012

Hole #	Length (m)	Au (g/t)
W12-93	2.0	7.99
	2.0	7.14
	1.0	13.87
W12-95	1.3	11.73
W12-96	9.7	2.81
Including	0.5	19.77
and	0.6	28.26
W12-97	1.0	22.08
W12-99B	41.0	3.81
including	10.9	3.84
	9.1	12.60
	4.2	32.25
W12-100	3.4	16.41
	8.1	2.19

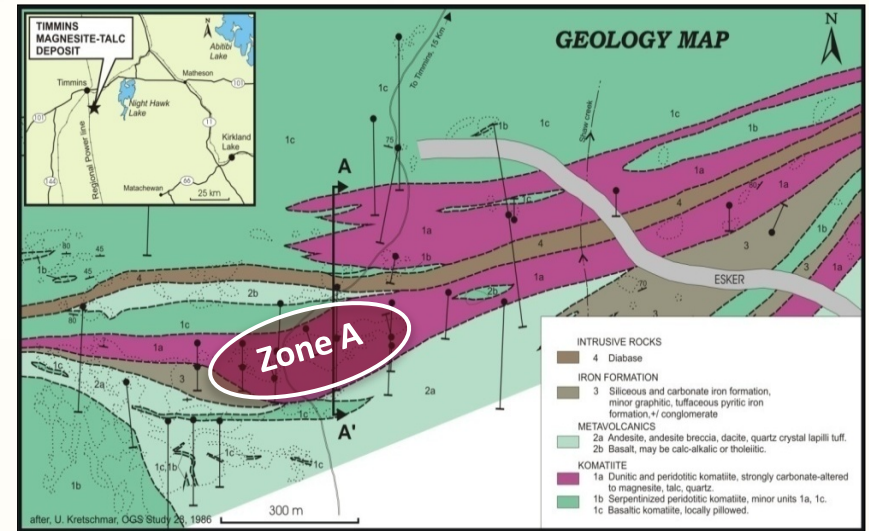
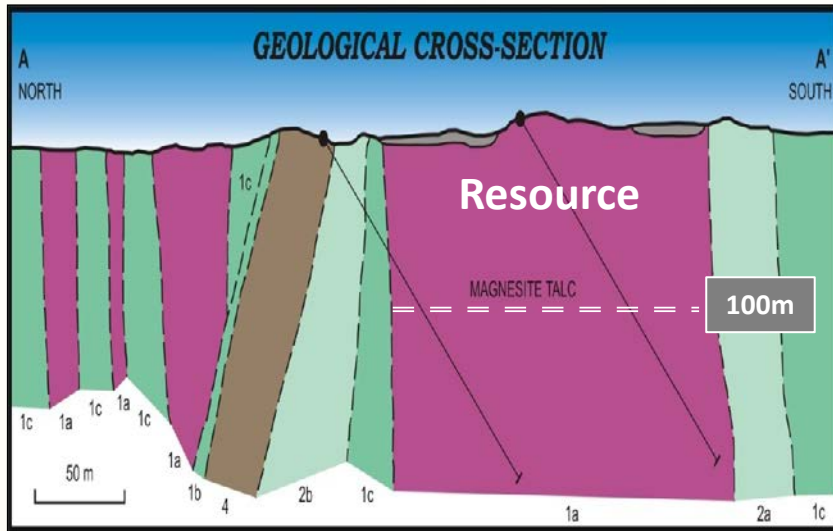
2013

Hole #	Length (m)	Au (g/t)
CC-13-001	1.56	9.74
	7.56	3.76
including	4.50	5.88
CC-13-003	3.00	4.38
CC-13-004	9.75	3.84
including	0.70	47.94
CC-13-005	0.75	22.9
CC-13-006	1.50	13.78
	10.65	4.84
including	2.15	17.23
including	2.50	5.18
CC-13-008	2.00	6.45
W13-101	4.27	6.40
W13-103	1.90	29.14
W13-106	2.75	15.59
Including	0.70	60.11
	0.65	158.54
W13-107	11.80	15.10
Including	3.30	47.80
and	4.00	5.00
W13-108	0.50	9.81
	1.35	6.10

Duquesne West, Qc



Timmins Talc-Magnesite Project



Resource Category - Zone A	Tonnage (t)	Magnesite (%)	Talc (%)
Indicated	12,728,000	52.1	35.4
Inferred	18,778,000	53.1	31.7

20 year Preliminary Economic Assessment

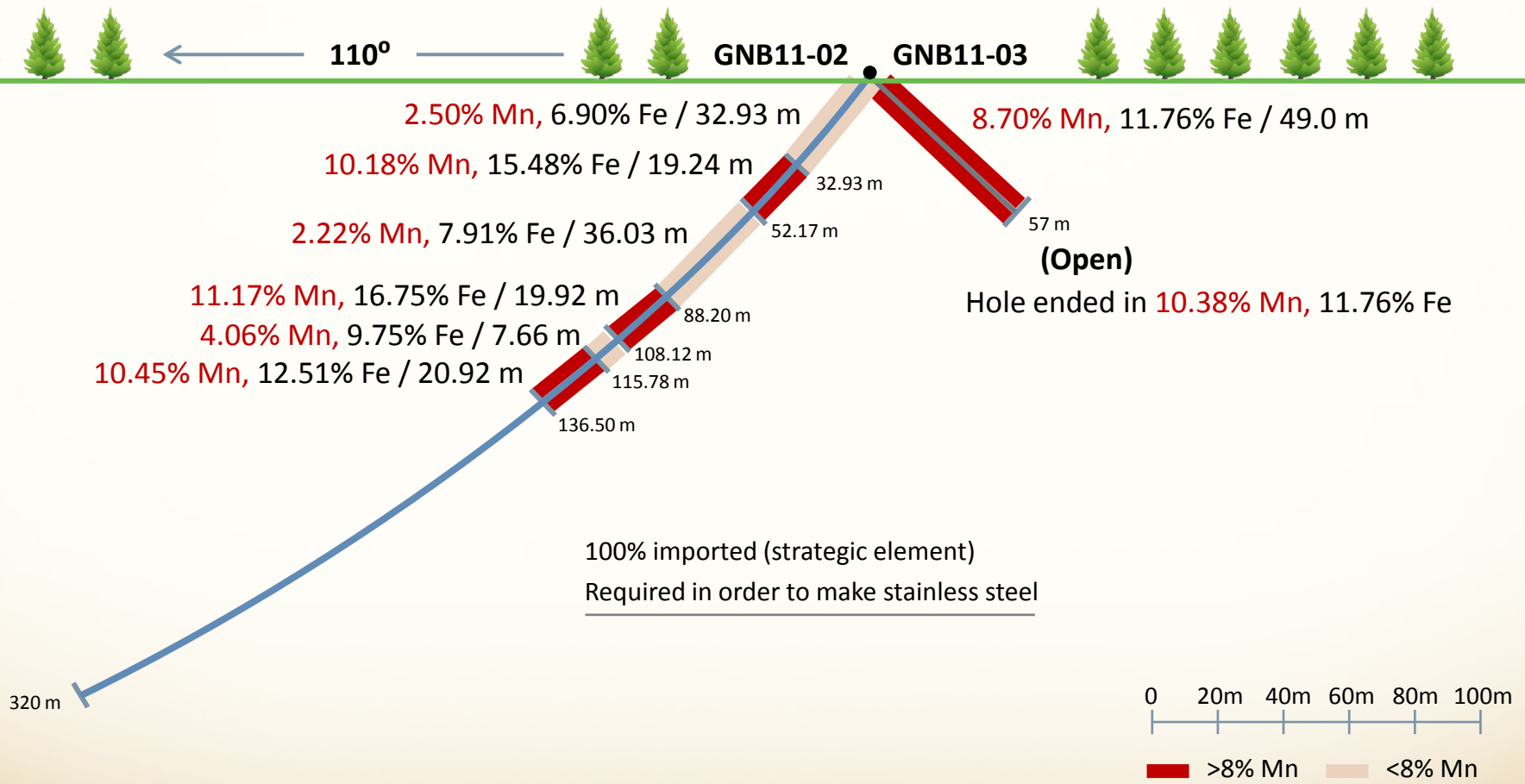
- | | | | |
|----------------------------|------------------------|-------------------|--------------------------|
| • Magnesium Oxide (MgO) | > 94.8% Recovery | • Size Potential | + 100 M. Tonnes |
| • Talc | > 70.8% Recovery | • Life | + 60 years (Zone A only) |
| • Annual Tonnage Processed | 500,000 tonnes | • Mining Method | - Open Pit |
| • Total Sales (Gross) | > \$2,578,000,000 Cdn. | • MgO Purity | + 98% |
| • Pre-Production Cap Ex | > \$268,400,000 Cdn. | • Talc Brightness | 93-95 |
| • Price (MgO) | > \$570/t Cdn. | • After Tax IRR | 20% |
| • Price (Talc) | > \$500/t Cdn. | | |

Projections based upon Micon International Limited PEA Report April 16, 2012

Resources : NI 43-101 conformable



Iron Hill (Manganese/Iron Deposit 21 J 04)



Realization of True Value

Spin Outs

**WORLDWIDE
MAGNESIUM CORP.**



Talc • Magnesium
Compounds



**MULTIPLE LAND
PACKAGES**



Gold • Base Metals
Industrial Minerals

Chibougamau
Independent
Mines Inc.

8 former Au/Cu Mines
Large Land Position
2 Unmined Deposits
Large Fe, TiO₂, V₂O₅
Deposit



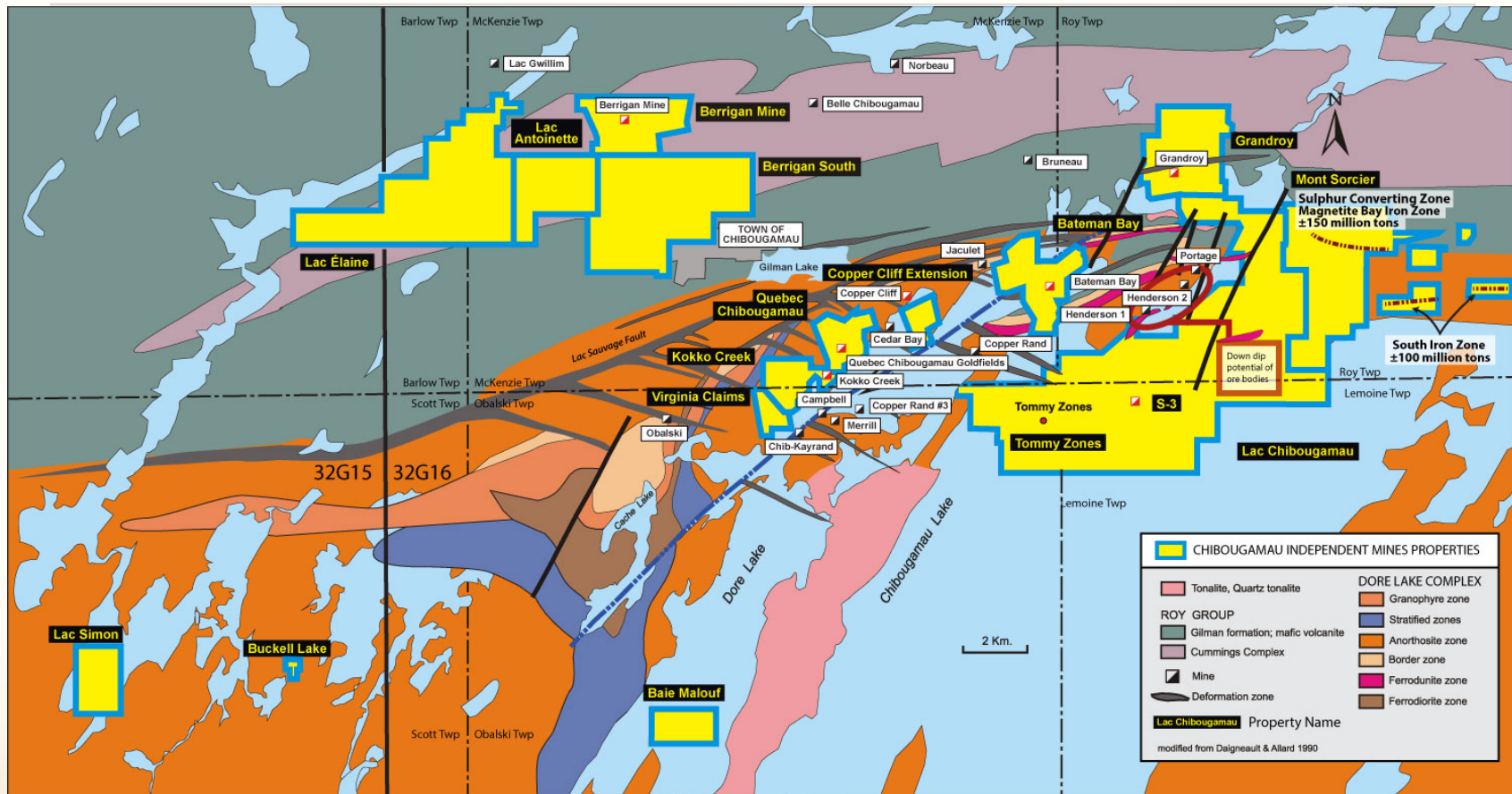
Chibougamau Mining Camp



- 100% interest in a major land package in the Chibougamau Mining Camp – 9,326 hectares (23,044 acres)
- 5 former copper-gold mines
- Down dip of 3 large copper-gold deposits
- 2 Unmined deposits (Au, Ag, Zn - Berrigan) & (Cu, Au – Bateman Bay)
- 1 Unmined iron/titanium/vanadium deposit
- Several partially defined copper-gold zones
- Large exploration land package with numerous targets
- No environmental liabilities



Geological Map of the Chibougamau Area

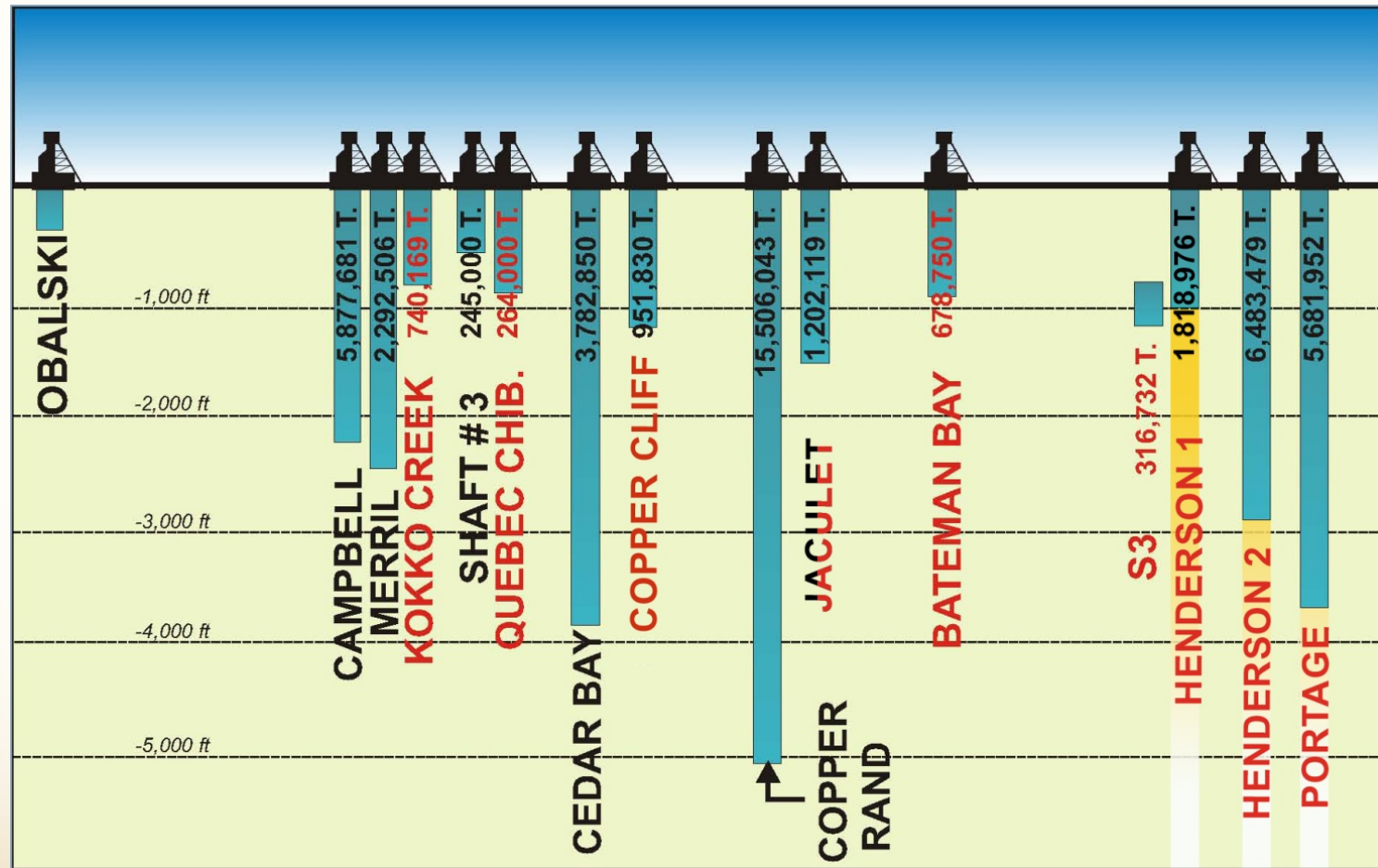


Historical Production - 47.6 Million Tons

- 1.6 billion lbs Cu
 - 3.2 million oz Au
- *3,000 tpd mill and permitted tailings facility Central to CIM property package



Doré Lake Complex (Copper-Gold)



Longitudinal Section – Chibougamau area, Quebec



Some Significant Gold Intersections Within Previous Drilling Berrigan Property 32G16

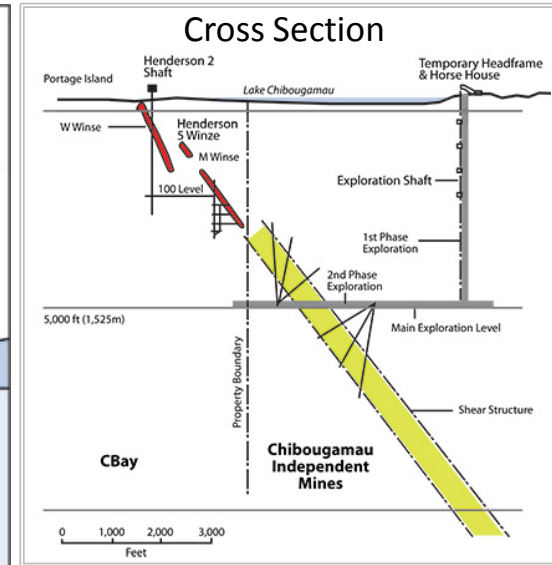
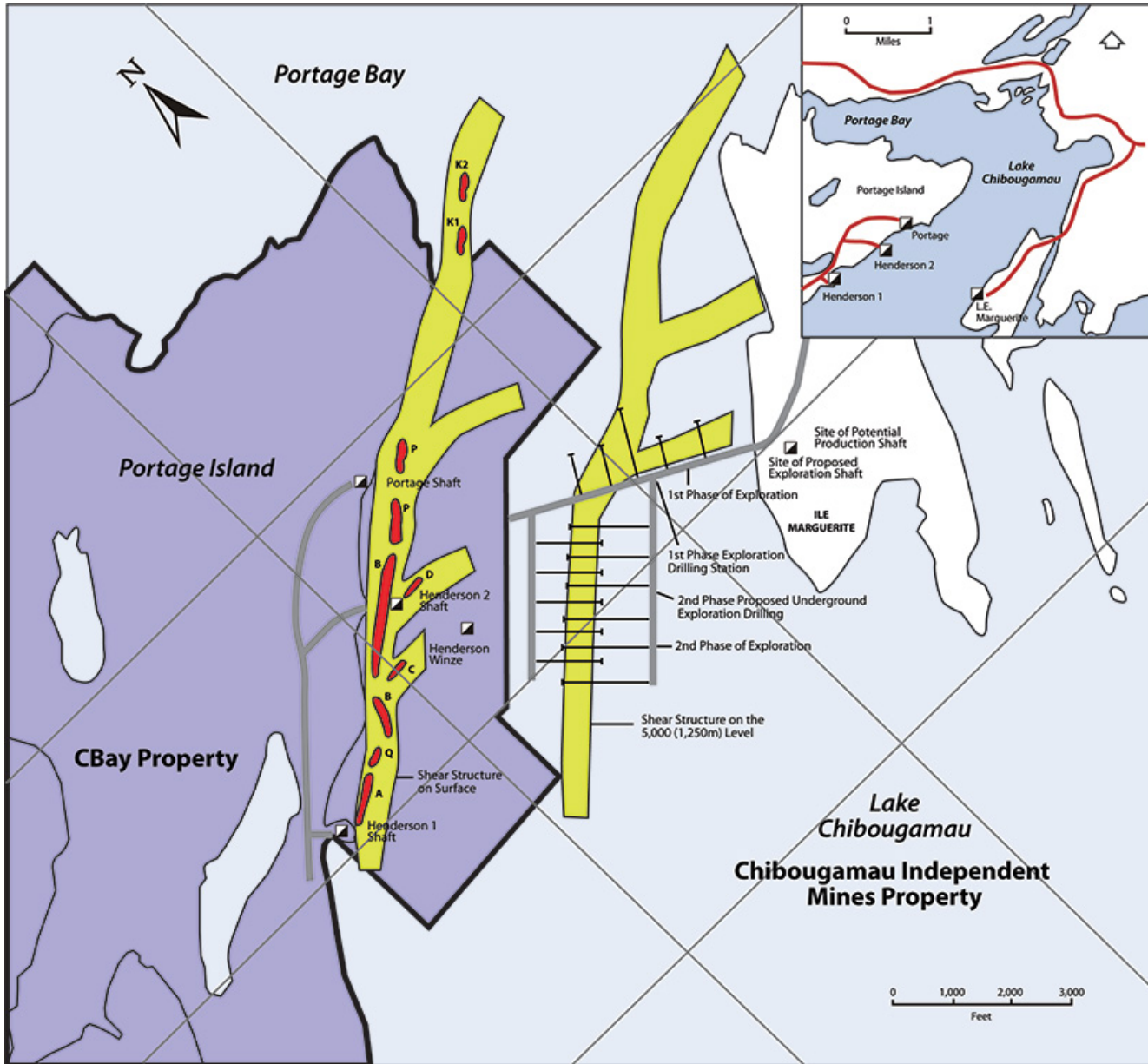
Surface diamond drill holes

Hole #	From	To	Interval	% Zn	% Cu	Au g/t	Ag g/t
A-005	131.4 m	140.2 m	8.8 m	5.70%		6.96 g/t	
A-010	97.3 m	105.2 m	7.9 m	4.43%		4.94 g/t	25.36 g/t
A-016	18.9 m	21.2 m	2.3 m	1.51%		6.43 g/t	
	76.2 m	77.7 m	1.5 m	3.45%		8.91 g/t	
A-061	91.6 m	100.6 m	9.0 m	3.76%	0.16%	3.00 g/t	17.24 g/t
	107.1 m	115.7 m	8.6 m	6.15%	0.17%	8.14 g/t	39.70 g/t
A-062	59.3 m	61.1 m	1.8 m	6.92%		4.62 g/t	17.14 g/t
A-063	113.7 m	114.3 m	0.6 m	17.55%		49.23 g/t	404.64 g/t
	129.4 m	132.8 m	3.4 m	8.86%		8.88 g/t	68.16 g/t
	138.9 m	141.5 m	2.6 m	4.69%		4.04 g/t	11.14 g/t
A-065	121.6 m	125.7 m	4.6 m	7.67%		6.08 g/t	21.56 g/t
	139.8 m	144.5 m	4.7 m	2.80%		3.55 g/t	7.64 g/t
	164.7 m	167.2 m	2.5 m	3.13%		6.95 g/t	15.44 g/t
A-066	100.6 m	101.8 m	1.2 m	22.90%		36.65 g/t	39.73 g/t
	159.8 m	168.8 m	9.0 m	6.26%		5.19 g/t	19.60 g/t
A-067	157.1 m	158.2 m	1.1 m	16.75%		10.96 g/t	
A-072	188.7 m	190.9 m	2.2 m	5.08%		3.13 g/t	
A-073	144.8 m	145.1 m	0.3 m	27.90%		32.88 g/t	
A-076	126.3 m	129.8 m	3.5 m	11.07%		3.02 g/t	
A-083	94.3 m	96.3 m	2.0 m	4.45%		3.79 g/t	10.34 g/t
	119.4 m	132.6 m	13.2 m	4.99%		2.88 g/t	15.91 g/t
A-084	130.3 m	142.8 m	12.5 m	4.58%		5.10 g/t	17.18 g/t
A-086	50.9 m	52.1 m	1.2 m	7.00%		15.07 g/t	59.60 g/t
A-103	56.4 m	59.4 m	3.0 m	5.84%		11.61 g/t	

Hole #	From	To	Interval	% Zn	% Cu	Au g/t	Ag g/t
U-02	44.9 m	45.6 m	0.7 m	2.95%		17.81 g/t	89.74 g/t
	90.4 m	91.4 m	1.0 m	13.80%		26.72 g/t	58.91 g/t
	95.8 m	108.7 m	12.9 m	5.75%		3.11 g/t	15.17 g/t
U-03	8.2 m	16.6 m	8.4 m	13.09%		6.98 g/t	20.71 g/t
	49.4 m	64.0 m	14.4 m	8.69%		3.41 g/t	17.49 g/t
U-04	17.4 m	19.7 m	2.3 m	12.77%		4.60 g/t	14.65 g/t
	85.9 m	86.6 m	0.7 m	7.05%		37.68 g/t	78.09 g/t
U-09	71.8 m	75.8 m	4.0 m	2.32%		4.32 g/t	12.43 g/t
SU-23	2.8 m	10.6 m	7.8 m	3.98%		3.33 g/t	20.54 g/t
SU-52	0.0 m	5.0 m	5.0 m	3.88%		3.01 g/t	19.82 g/t
SU-59	0.0 m	4.1 m	4.1 m	5.40%		3.51 g/t	31.04 g/t
TA-87-27	31.1 m	32.3 m	1.2 m	5.60%		17.98 g/t	37.33 g/t
TA-87-40	81.1 m	83.5 m	2.4 m	10.05%		2.96 g/t	50.05 g/t
	91.4 m	94.2 m	2.8 m	10.82%		3.23 g/t	19.19 g/t
TA-90-50	65.5 m	70.1 m	4.6 m	4.12%		6.78 g/t	10.12 g/t
	84.6 m	87.5 m	2.9 m	3.90%		3.20 g/t	
	95.5 m	106.7 m	11.2 m	10.39%	0.10%	2.54 g/t	19.26 g/t
	114.0 m	129.5 m	15.5 m	6.57%	0.10%	8.05 g/t	23.58 g/t
TA-90-51	197.4 m	200.0 m	2.6 m	5.39%	0.21%	3.52 g/t	20.10 g/t
TA-90-52	201.2 m	203.3 m	2.1 m	5.21%		5.70 g/t	11.60 g/t
TA-90-56	81.0 m	84.4 m	3.4 m	5.75%		4.06 g/t	
	164.4 m	166.9 m	2.5 m	5.23%		6.18 g/t	
	215.7 m	219.6 m	3.9 m	6.74%		3.95 g/t	
TLT-09	247.4 m	249.7 m	2.3 m			4.28 g/t	



Henderson-Portage Shear Plan Map with Depth Projection & Cross Section (Per Western Mining)



Henderson I - Total Ore Extracted

1960 – 1971

1,818,976 T @ 2.23% Cu, 0.045 oz/t Au

Henderson II - Total Ore Extracted

1960 – 1988

6,483,479 T @ 1.60% Cu, 0.041 oz/t Au

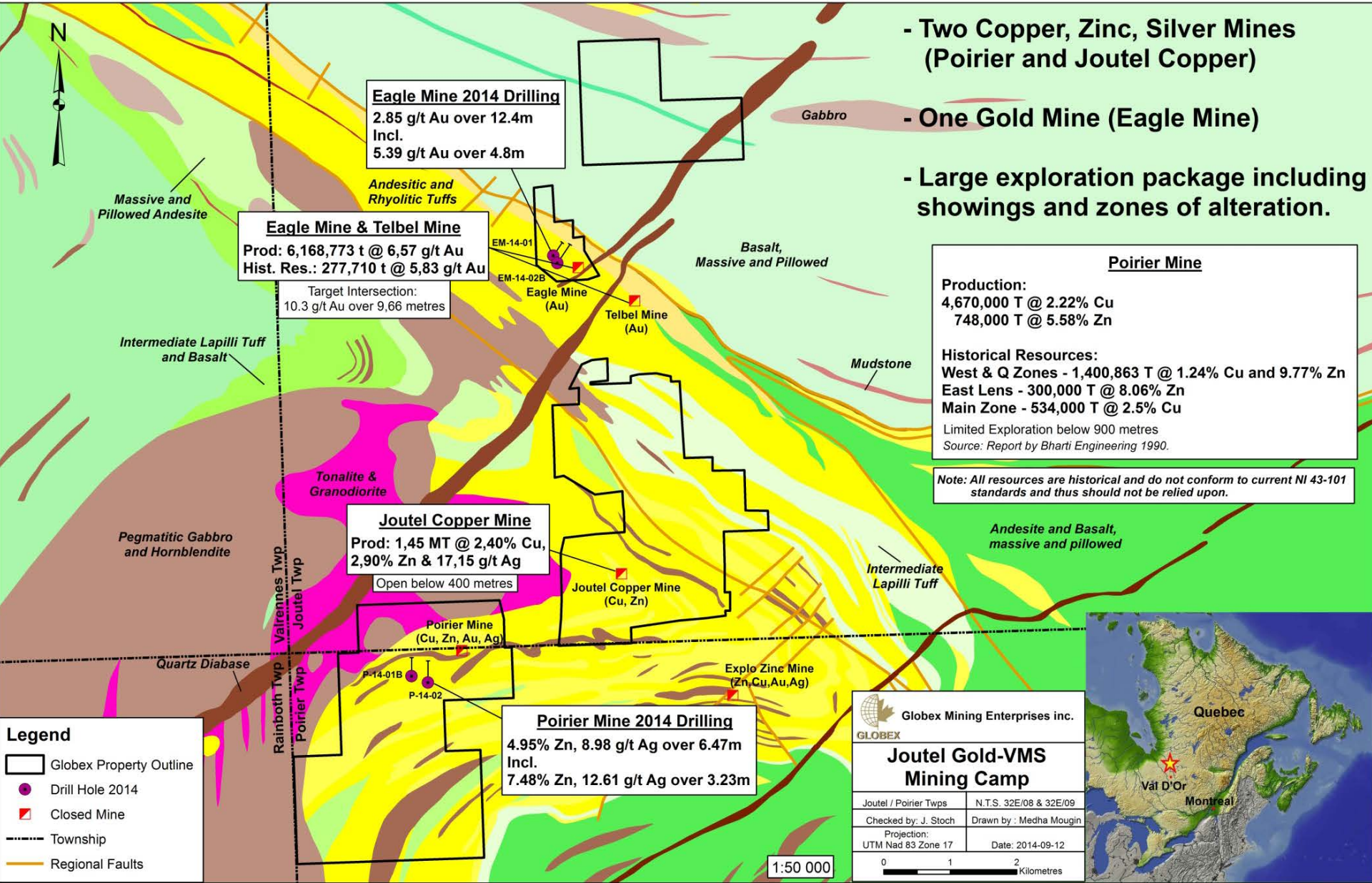
Portage Mine - Total Ore Extracted

1959 – 1997

6,212,934 T @ 1.77% Cu, 0.114 oz/t Au

- Mine package forms a single multi-lensed orebody stretching along a broad NE-striking shear with > 1 mile of strike
- Portage Mine mined to a depth of 3,600 feet
- Western mining planned to explore and develop to 5000-foot depth

Joutel Compilation Map, Qc



- Two Copper, Zinc, Silver Mines (Poirier and Joutel Copper)

- One Gold Mine (Eagle Mine)

- Large exploration package including showings and zones of alteration.

Eagle Mine 2014 Drilling
2.85 g/t Au over 12.4m Incl.
5.39 g/t Au over 4.8m

Eagle Mine & Telbel Mine
Prod: 6,168,773 t @ 6,57 g/t Au
Hist. Res.: 277,710 t @ 5,83 g/t Au
Target Intersection:
10.3 g/t Au over 9.66 metres

Poirier Mine
Production:
4,670,000 T @ 2.22% Cu
748,000 T @ 5.58% Zn
Historical Resources:
West & Q Zones - 1,400,863 T @ 1.24% Cu and 9.77% Zn
East Lens - 300,000 T @ 8.06% Zn
Main Zone - 534,000 T @ 2.5% Cu
Limited Exploration below 900 metres
Source: Report by Bharti Engineering 1990.

Note: All resources are historical and do not conform to current NI 43-101 standards and thus should not be relied upon.

Joutel Copper Mine
Prod: 1,45 MT @ 2,40% Cu,
2,90% Zn & 17,15 g/t Ag
Open below 400 metres

Poirier Mine 2014 Drilling
4.95% Zn, 8.98 g/t Ag over 6.47m Incl.
7.48% Zn, 12.61 g/t Ag over 3.23m

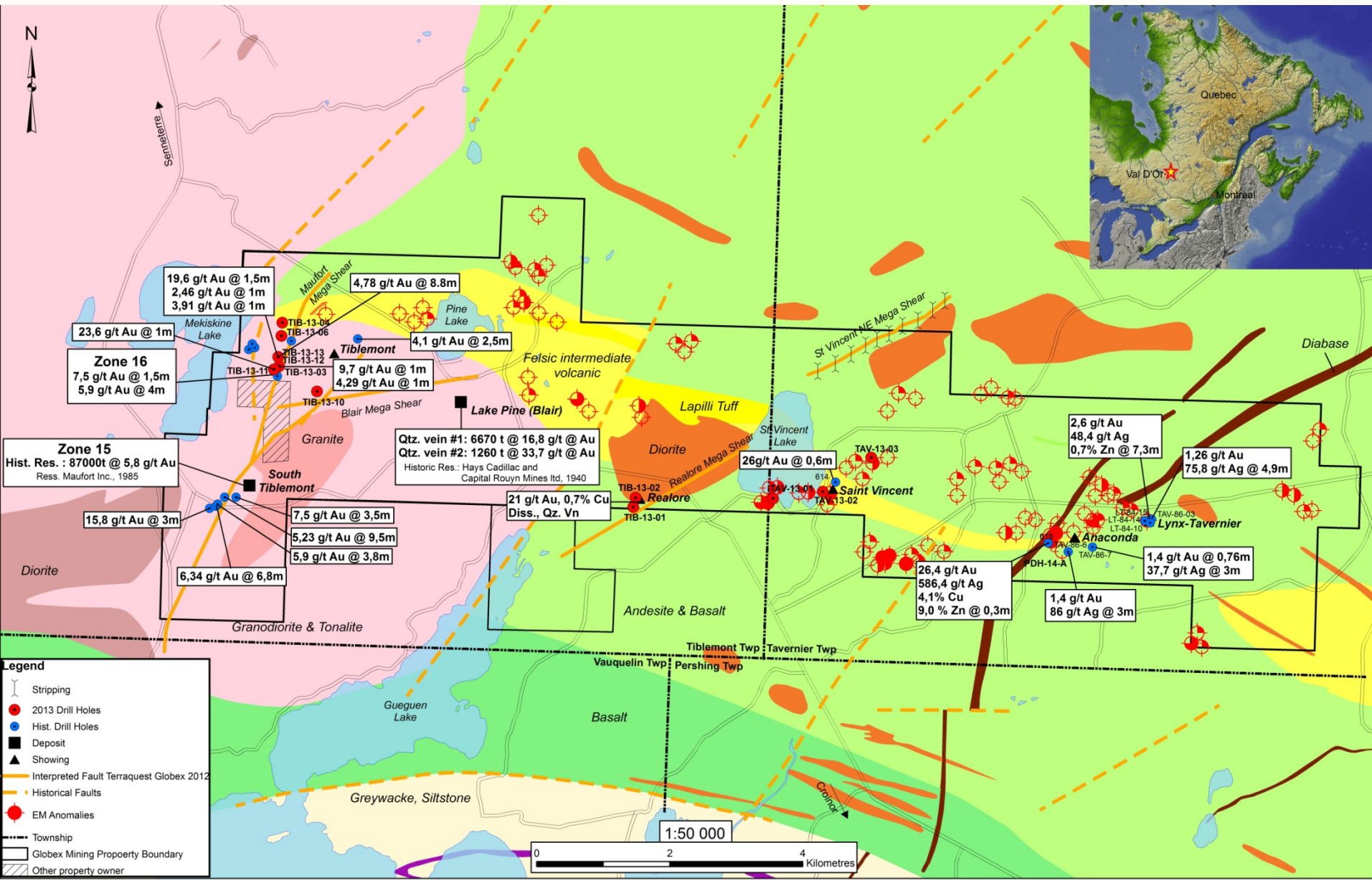
Globex Mining Enterprises inc.
GLOBEX
Joutel Gold-VMS Mining Camp
Joutel / Poirier Twps | N.T.S. 32E/08 & 32E/09
Checked by: J. Stoch | Drawn by: Medha Mouglin
Projection: UTM Nad 83 Zone 17 | Date: 2014-09-12
0 1 2 Kilometres



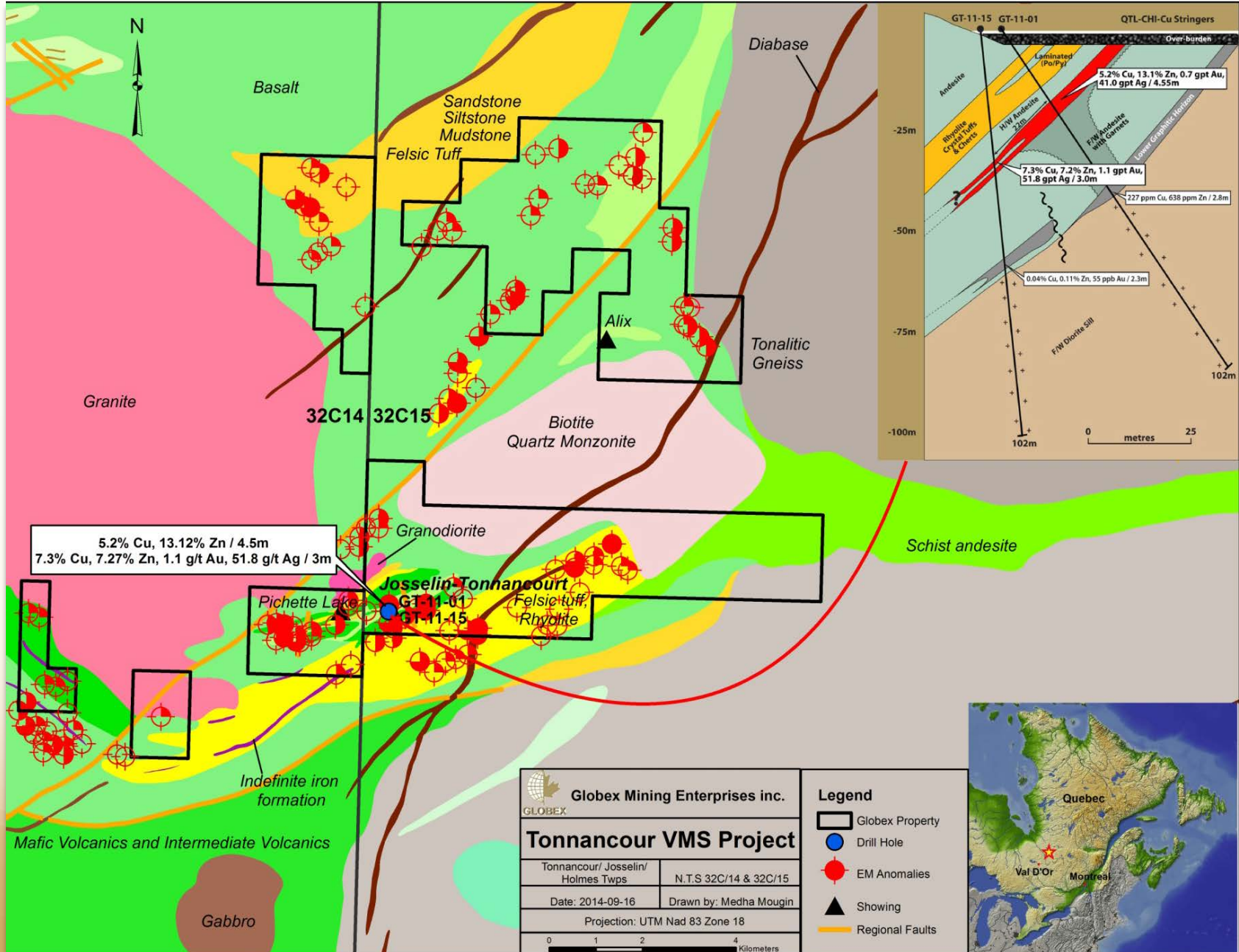
Legend
 [] Globex Property Outline
 ● Drill Hole 2014
 [] Closed Mine
 - - - Township
 - - - Regional Faults

1:50 000

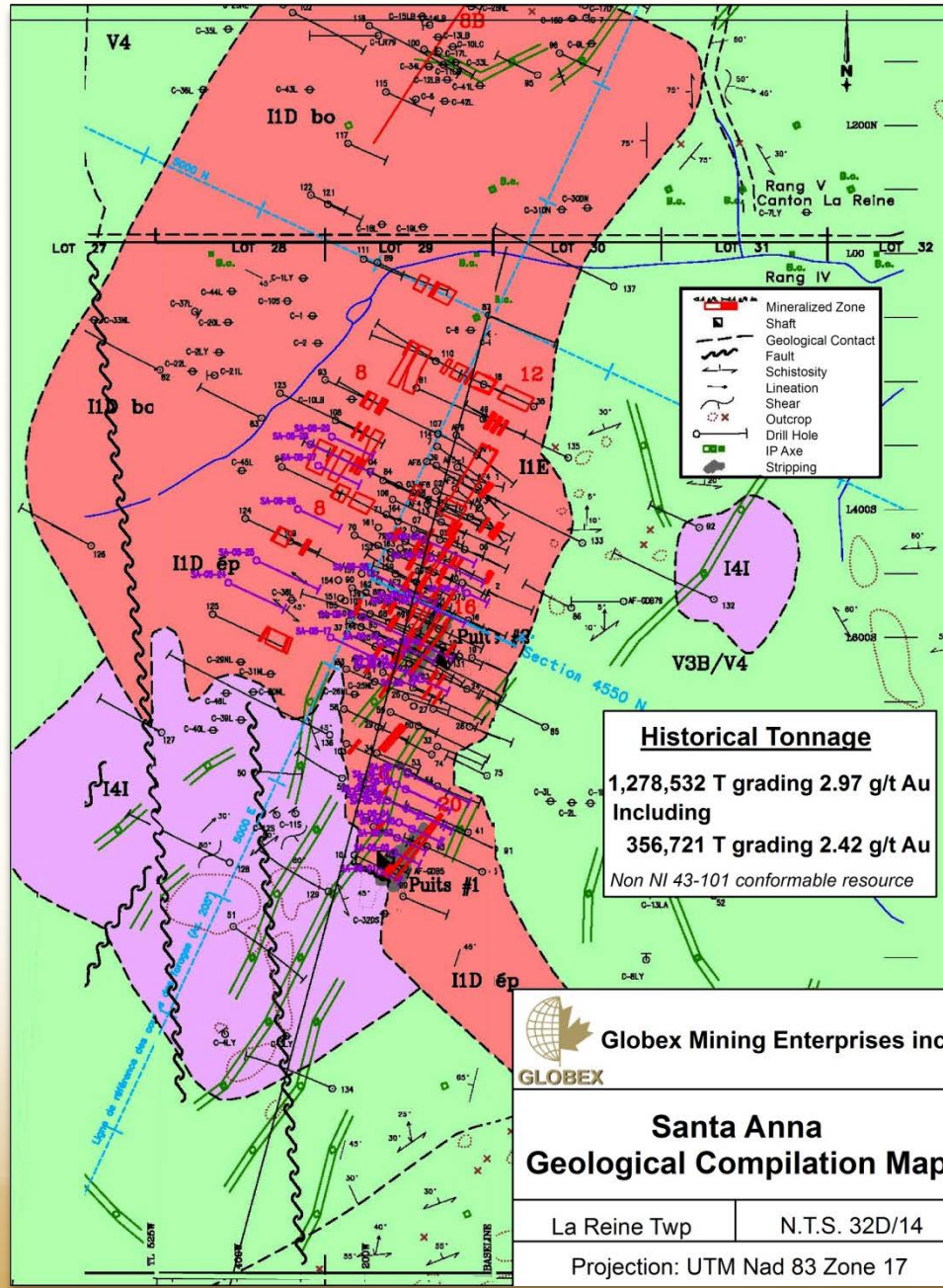
Tiblemont-Tavernier, QC – 32C03



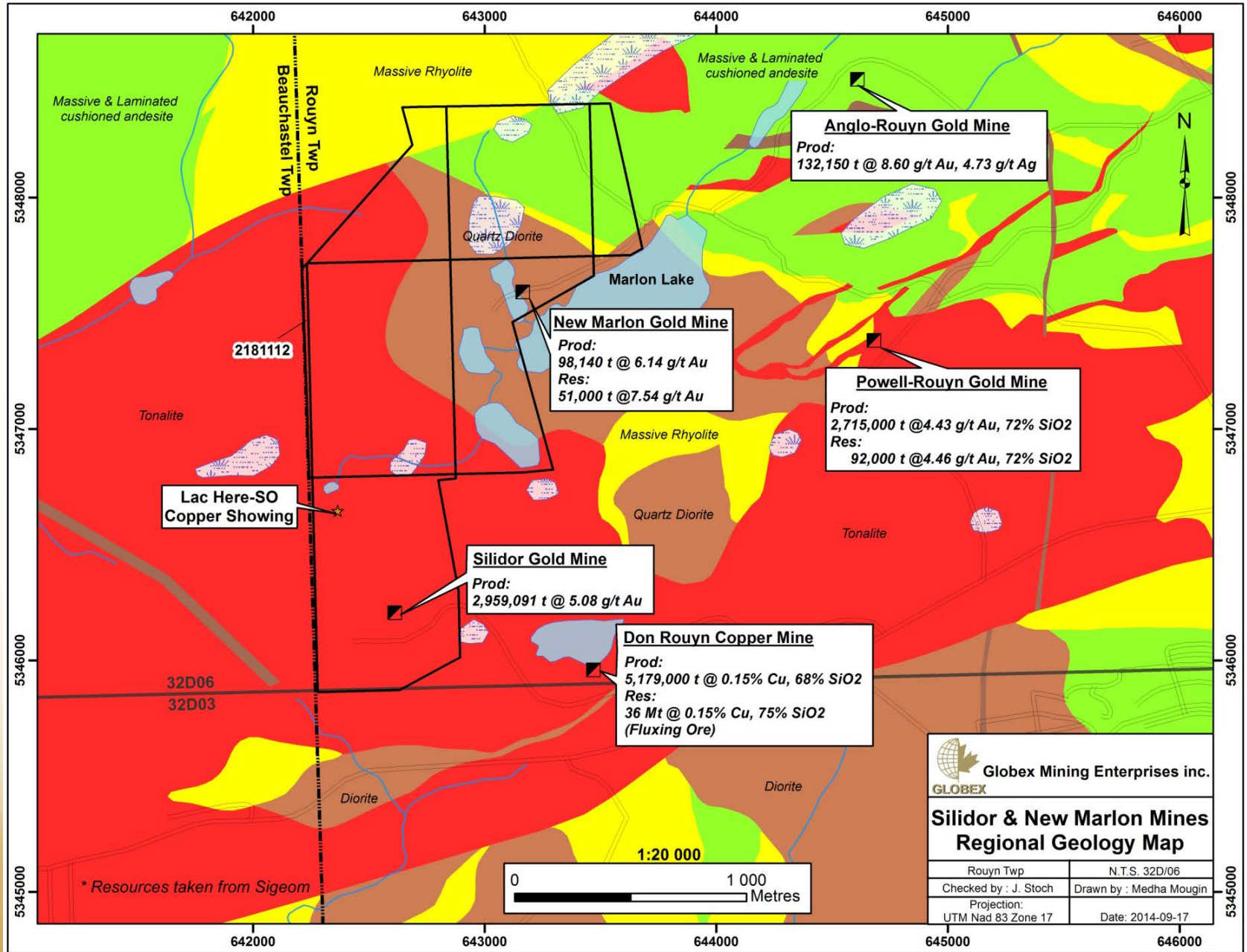
Tonnancour Project, Qc – 32C14 & 15



Santa Anna Geological Compilation, Qc



Silidor & New Marlon Mines, Qc





GLOBEX

Mining Enterprises Inc.

THANK YOU

MERCI

DANKE

GRAZIE

MEEGWETCH