

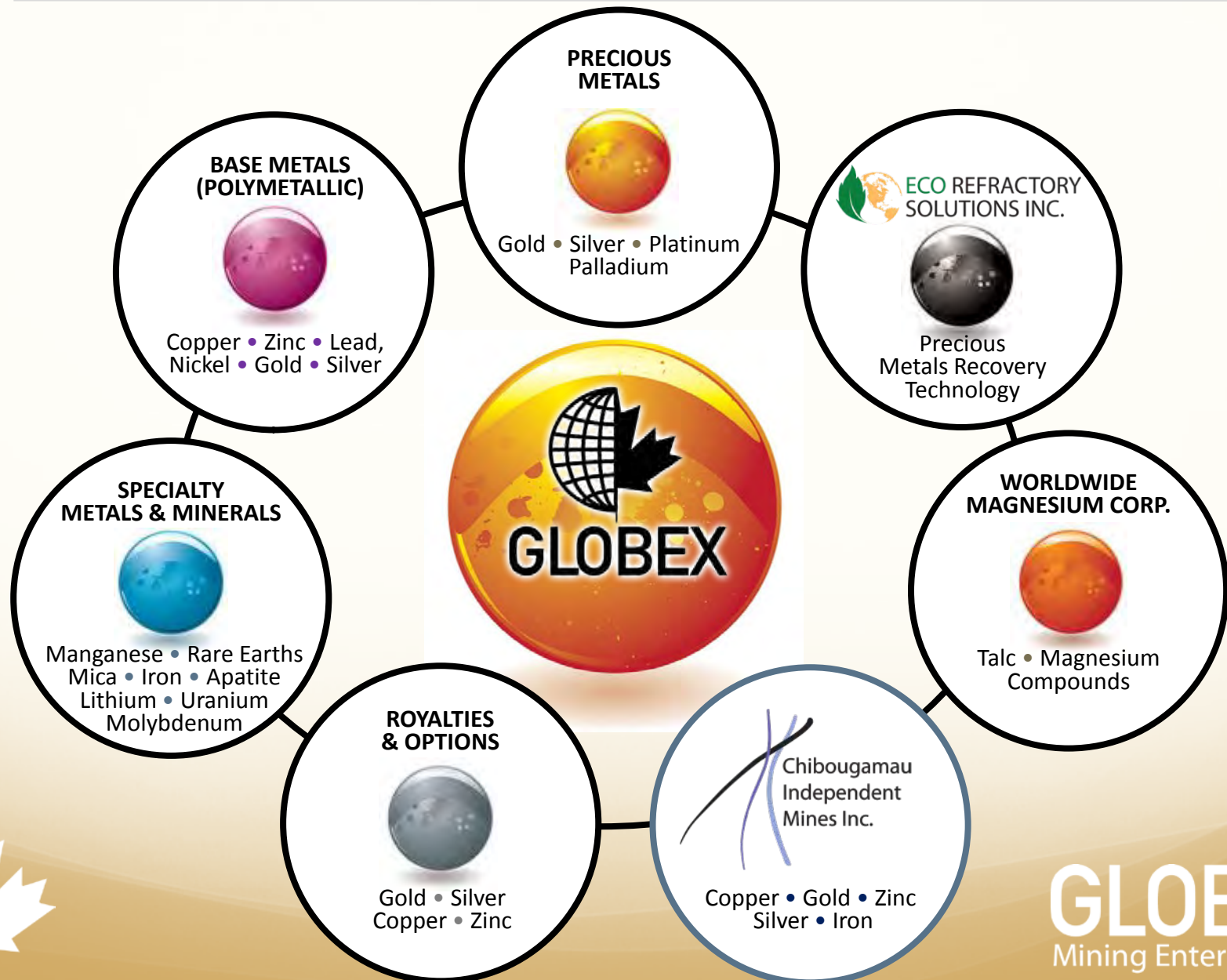


## **Forward-Looking Statements**

Except for historical information, this presentation may contain certain “forward-looking statements”. These statements may involve a number of known and unknown risks and uncertainties and other factors that may cause the actual results, level of activity and performance to be materially different from the expectations and projections of Globex.

No assurance can be given that any events anticipated by the forward-looking information will transpire or occur, or if any of them do so, what benefits Globex will derive therefrom. A detailed discussion of the risk factors relating to Globex is available in Globex’s Annual Information Form, available at [www.sedar.com](http://www.sedar.com).

# At Home in North America



# Globex Mining Enterprises Inc.

---

- Shares Issued 33,536,612 (no rollbacks)
  - Shares Fully Diluted 34,836,612
- 

- Funds available for exploration
- No debt
- Own 100% of its property interests
- Based in North America. Primarily; Quebec, Ontario, Nova Scotia and New Brunswick
- Specialized and experienced Board of Directors composed of 4 senior geologists and 1 mining accountant



# Stock Exchange Listings

**GMX**

Canada

Toronto

Germany

**G1M**

Xetra

Munich

Stuttgart

Berlin

Frankfurt

**GLBXF**

U.S.A

OTCQX International



**GLOBEX**  
Mining Enterprises Inc.

# Diversified Mineral Holdings

## Precious Metals

Au • Gold  
Ag • Silver  
Pt • Platinum  
Pd • Palladium

## Base Metals

Cu • Copper  
Zn • Zinc  
Ni • Nickel  
Pb • Lead

## Specialty Metals

REE • Rare Earths  
Fe • Iron  
Mn • Manganese  
Mo • Molybdenum  
U • Uranium  
Li • Lithium  
Hf • Hafnium  
Ce • Cerium  
Zr • Zirconium  
Y • Yttrium  
Nb • Niobium  
Ti • Titanium

## Industrial Metals

Magnesite  
Talc  
Phlogopite Mica  
Apatite



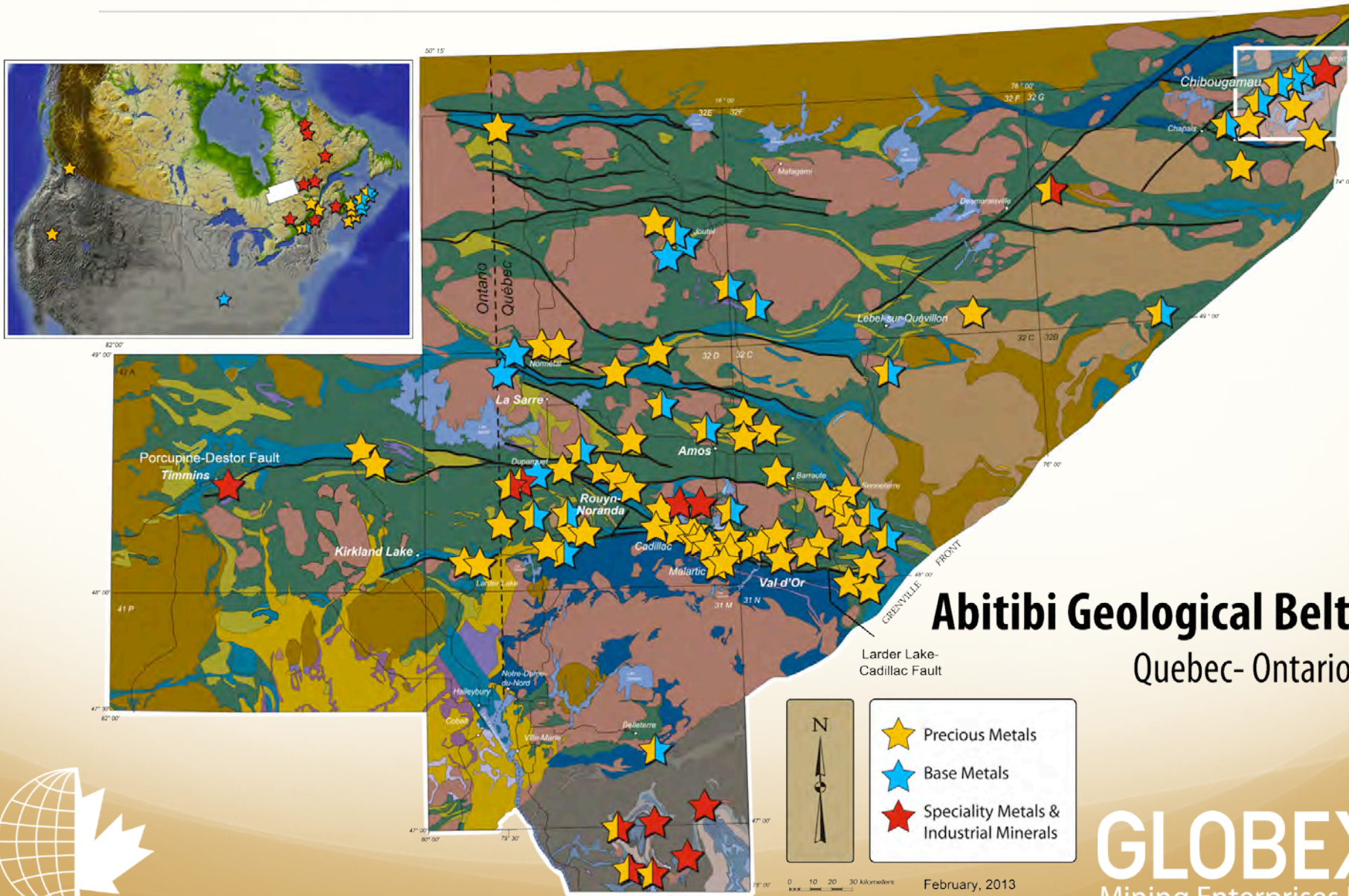


120	Properties
61	Precious Metals <ul style="list-style-type: none"> <li>• Gold, Silver, Platinum, Palladium</li> </ul>
44	Base Metals & Polymetallic <ul style="list-style-type: none"> <li>• Copper, Zinc, Gold, Silver, Lead, Nickel</li> </ul>
15	Specialty Metals & Minerals <ul style="list-style-type: none"> <li>• Iron, Lithium, Magnesium Oxide, Manganese, Mica, Molybdenum, Rare Earths, Talc, Uranium, Titanium</li> </ul>
34	Royalties
7	Active options <ul style="list-style-type: none"> <li>• Cash payments</li> <li>• Share payments</li> <li>• Exploration &amp; development expenditures</li> <li>• Gross metal royalty</li> </ul>
47	Historical or NI 43-101 resources

Note: Some properties have been combined due to proximity or infill staking



# Diversified Mineral Holdings



**Abitibi Geological Belt**  
Quebec- Ontario

Larder Lake-  
Cadillac Fault

- ★ Precious Metals
- ★ Base Metals
- ★ Speciality Metals & Industrial Minerals

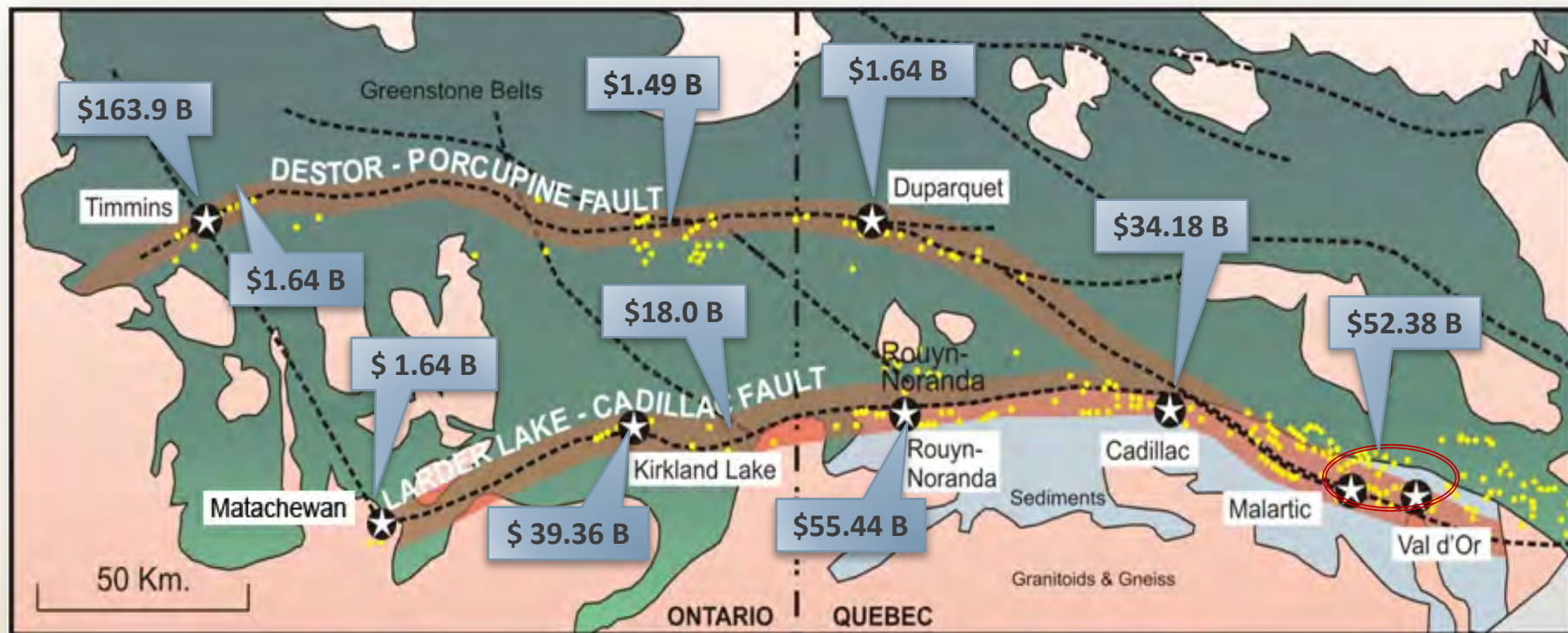
**GLOBEX**  
Mining Enterprises Inc.

February, 2013



# Historical Value of Production

**Total: US \$ 370 Billion**



**Au** 166.61 Million oz

**Zn** 28.0 Billion lb

**Ag** 635.8 Million oz

**Cu** 14.5 Billion lb

#### Metal Prices Used in Calculations

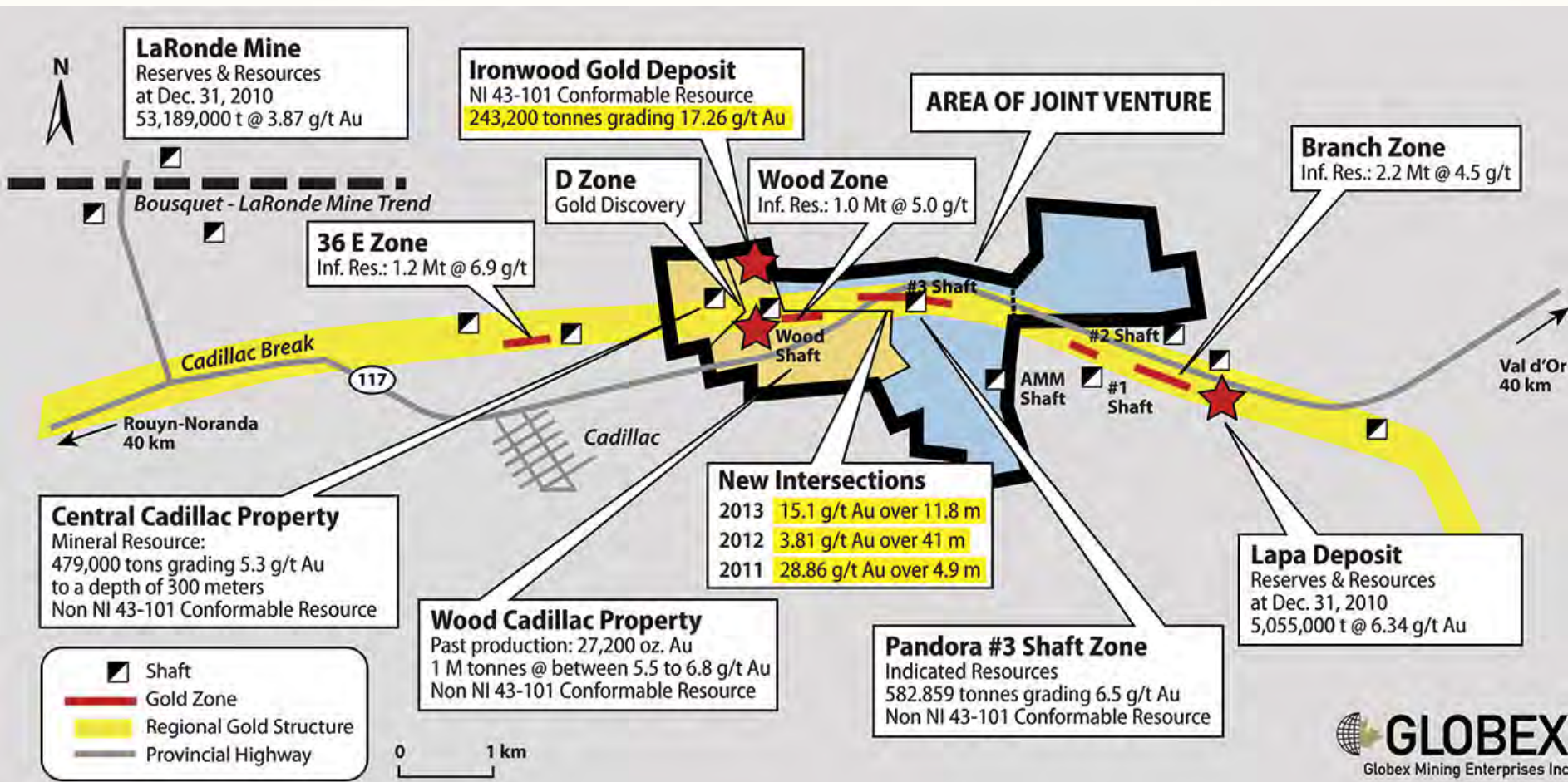
Au	\$ 1400.00/oz	Zn	\$ 0.82/lb
Ag	\$ 23.00/oz	Cu	\$ 3.30/lb



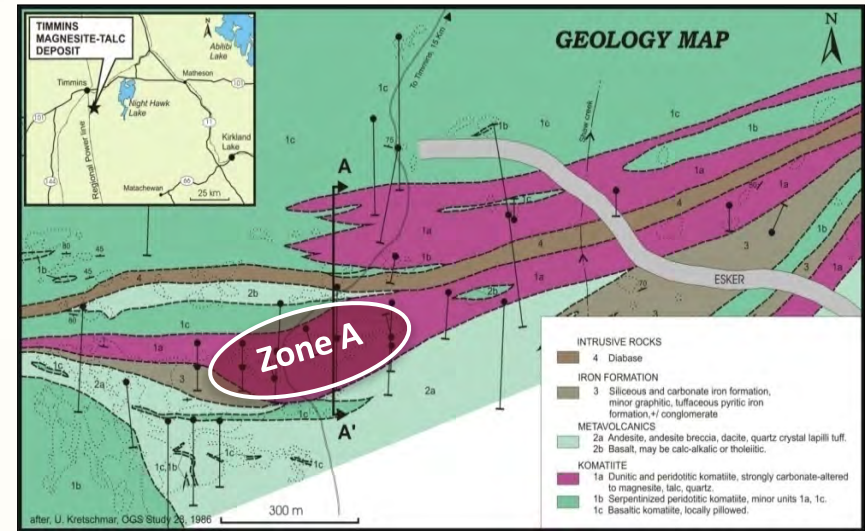
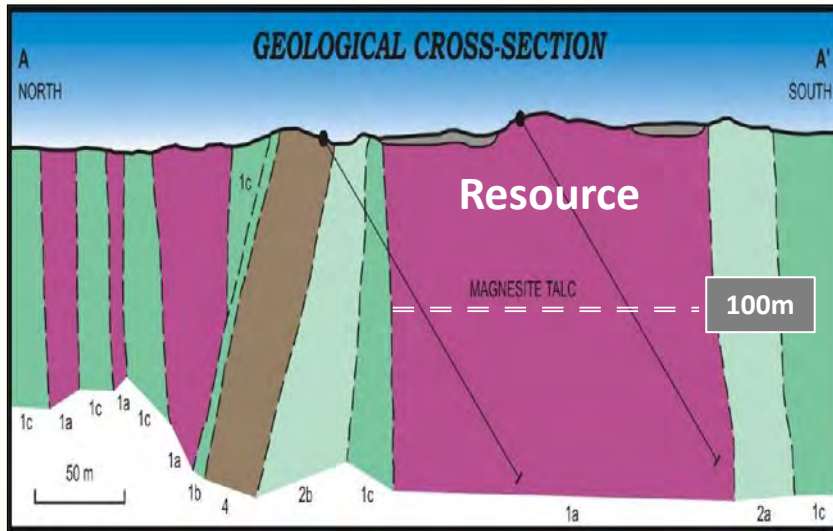
**GLOBEX**  
Mining Enterprises Inc.



# Cadillac Gold Camp (Wood-Pandora Joint Venture)



# Timmins Talc-Magnesite Project



Resource Category - Zone A	Tonnage (t)	Magnesite (%)	Talc (%)
Indicated	12,728,000	52.1	35.4
Inferred	18,778,000	53.1	31.7

## 20 year Preliminary Economic Assessment

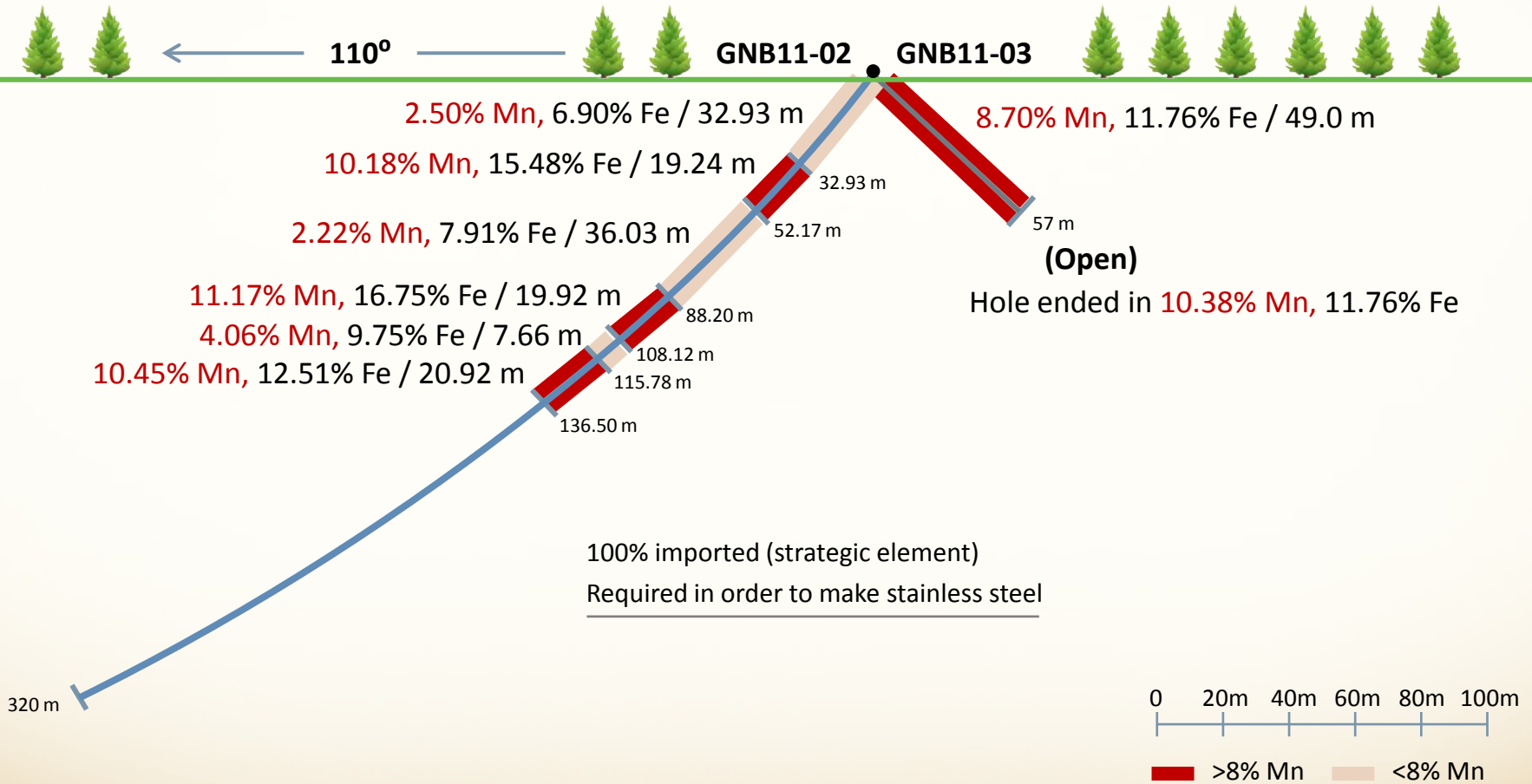
- |                            |                        |                   |                          |
|----------------------------|------------------------|-------------------|--------------------------|
| • Magnesium Oxide (MgO)    | > 94.8% Recovery       | • Size Potential  | + 100 M. Tonnes          |
| • Talc                     | > 70.8% Recovery       | • Life            | + 60 years (Zone A only) |
| • Annual Tonnage Processed | 500,000 tonnes         | • Mining Method   | - Open Pit               |
| • Total Sales (Gross)      | > \$2,578,000,000 Cdn. | • MgO Purity      | + 98%                    |
| • Pre-Production Cap Ex    | > \$268,400,000 Cdn.   | • Talc Brightness | 93-95                    |
| • Price (MgO)              | > \$570/t Cdn.         | • After Tax IRR   | 20%                      |
| • Price (Talc)             | > \$500/t Cdn.         |                   |                          |

Projections based upon Micon International Limited PEA Report April 16, 2012

Resources : NI 43-101 conformable



# Iron Hill (Manganese/Iron Deposit 21 J 04)



# Realization of True Value

## Spin Outs

**WORLDWIDE  
MAGNESIUM CORP.**



Talc • Magnesium  
Compounds



**GLOBEX**

**ECO REFRACTORY  
SOLUTIONS INC.**



Precious Metals  
Recovery Technology



Chibougamau  
Independent  
Mines Inc.

8 former Au/Cu Mines  
Large Land Position  
2 Unmined Deposits

**MULTIPLE LAND  
PACKAGES**



Gold • Base Metals  
Industrial Minerals



**GLOBEX**  
Mining Enterprises Inc.

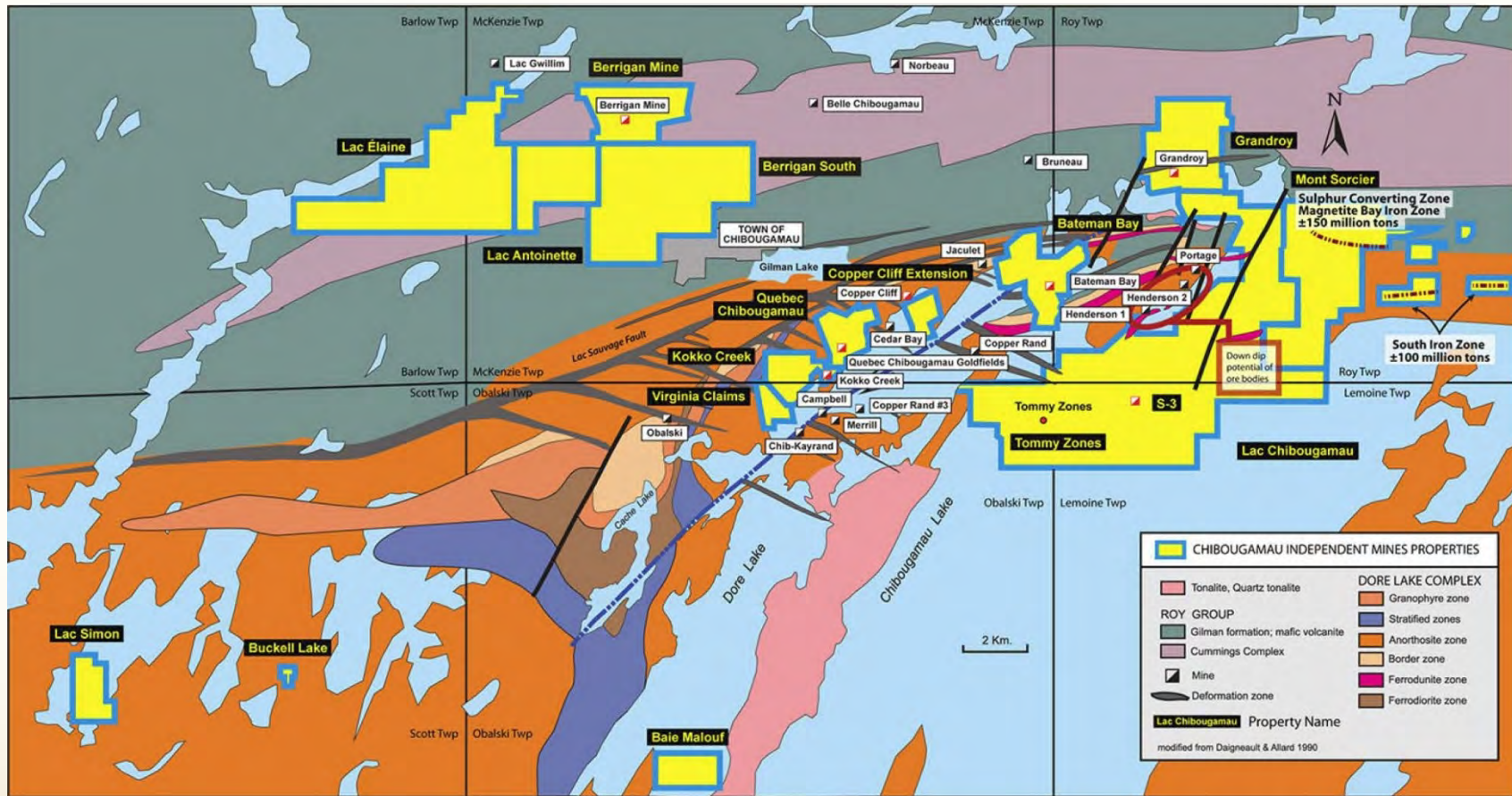
# Chibougamau Mining Camp



- 100% interest in a major land package in the Chibougamau Mining Camp – 6,528 hectares
- 5 former copper-gold mines
- Down dip of 3 large copper-gold deposits
- 2 Unmined deposits (Au, Ag, Zn - Berrigan) & (Cu, Au – Bateman Bay)
- 1 Unmined iron/titanium/vanadium deposit
- Several partially defined copper-gold zones
- Large exploration land package with numerous targets
- No environmental liabilities



# Geological Map of the Chibougamau Area



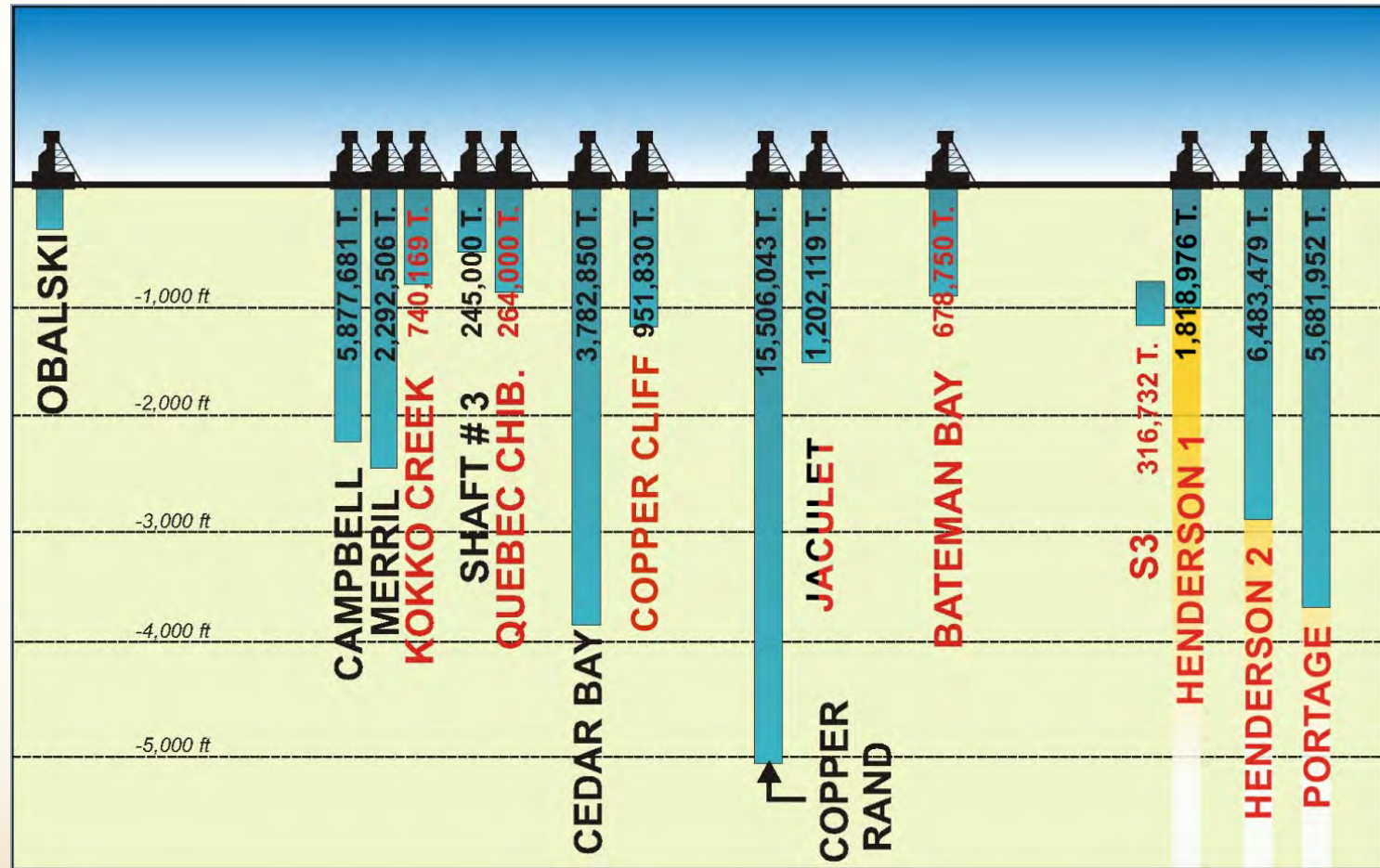
## Historical Production - 47.6 Million Tons

- 1.6 billion lbs Cu
- 3.2 million oz Au

\*3,000 tpd mill and permitted tailings facility Central to CIM property package



# Doré Lake Complex (Copper-Gold)



Longitudinal Section – Chibougamau area, Quebec



# Some Significant Gold Intersections Within Previous Drilling Berrigan Property 32G16

## Surface diamond drill holes

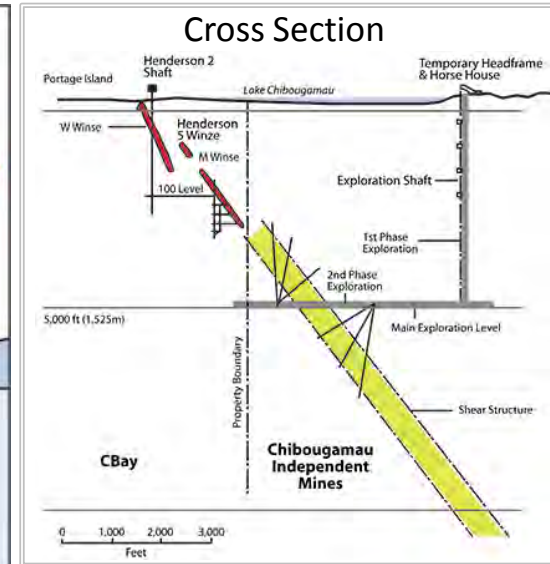
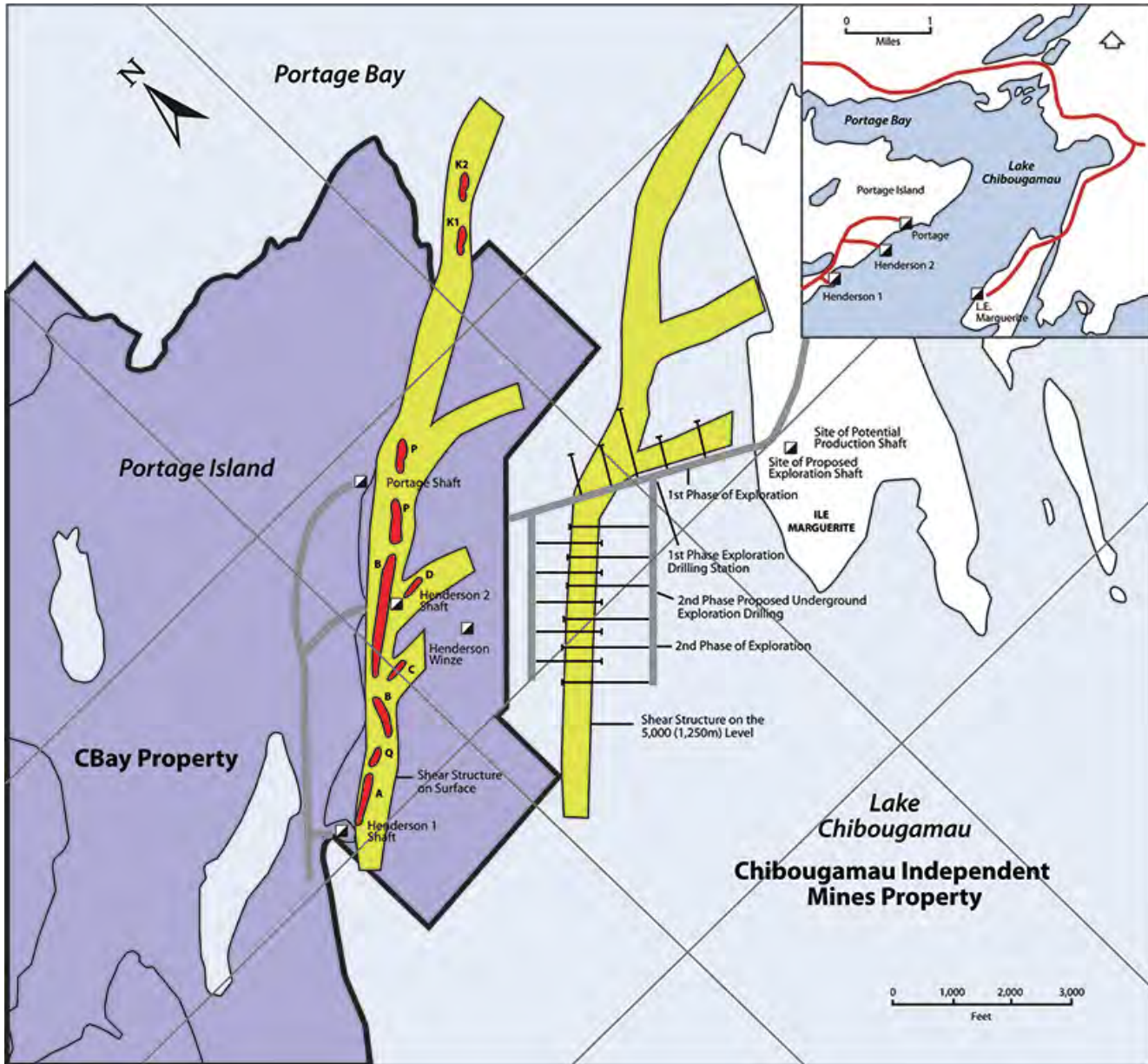
Hole #	From	To	Interval	% Zn	% Cu	Au g/t	Ag g/t
A-005	131.4 m	140.2 m	8.8 m	5.70%		6.96 g/t	
A-010	97.3 m	105.2 m	7.9 m	4.43%		4.94 g/t	25.36 g/t
A-016	18.9 m	21.2 m	2.3 m	1.51%		6.43 g/t	
	76.2 m	77.7 m	1.5 m	3.45%		8.91 g/t	
A-061	91.6 m	100.6 m	9.0 m	3.76%	0.16%	3.00 g/t	17.24 g/t
	107.1 m	115.7 m	8.6 m	6.15%	0.17%	8.14 g/t	39.70 g/t
A-062	59.3 m	61.1 m	1.8 m	6.92%		4.62 g/t	17.14 g/t
A-063	113.7 m	114.3 m	0.6 m	17.55%		49.23 g/t	404.64 g/t
	129.4 m	132.8 m	3.4 m	8.86%		8.88 g/t	68.16 g/t
	138.9 m	141.5 m	2.6 m	4.69%		4.04 g/t	11.14 g/t
A-065	121.6 m	125.7 m	4.6 m	7.67%		6.08 g/t	21.56 g/t
	139.8 m	144.5 m	4.7 m	2.80%		3.55 g/t	7.64 g/t
	164.7 m	167.2 m	2.5 m	3.13%		6.95 g/t	15.44 g/t
A-066	100.6 m	101.8 m	1.2 m	22.90%		36.65 g/t	39.73 g/t
	159.8 m	168.8 m	9.0 m	6.26%		5.19 g/t	19.60 g/t
A-067	157.1 m	158.2 m	1.1 m	16.75%		10.96 g/t	
A-072	188.7 m	190.9 m	2.2 m	5.08%		3.13 g/t	
A-073	144.8 m	145.1 m	0.3 m	27.90%		32.88 g/t	
A-076	126.3 m	129.8 m	3.5 m	11.07%		3.02 g/t	
A-083	94.3 m	96.3 m	2.0 m	4.45%		3.79 g/t	10.34 g/t
	119.4 m	132.6 m	13.2 m	4.99%		2.88 g/t	15.91 g/t
A-084	130.3 m	142.8 m	12.5 m	4.58%		5.10 g/t	17.18 g/t
A-086	50.9 m	52.1 m	1.2 m	7.00%		15.07 g/t	59.60 g/t
A-103	56.4 m	59.4 m	3.0 m	5.84%		11.61 g/t	

Hole #	From	To	Interval	% Zn	% Cu	Au g/t	Ag g/t
U-02	44.9 m	45.6 m	0.7 m	2.95%		17.81 g/t	89.74 g/t
	90.4 m	91.4 m	1.0 m	13.80%		26.72 g/t	58.91 g/t
	95.8 m	108.7 m	12.9 m	5.75%		3.11 g/t	15.17 g/t
U-03	8.2 m	16.6 m	8.4 m	13.09%		6.98 g/t	20.71 g/t
	49.4 m	64.0 m	14.4 m	8.69%		3.41 g/t	17.49 g/t
U-04	17.4 m	19.7 m	2.3 m	12.77%		4.60 g/t	14.65 g/t
	85.9 m	86.6 m	0.7 m	7.05%		37.68 g/t	78.09 g/t
U-09	71.8 m	75.8 m	4.0 m	2.32%		4.32 g/t	12.43 g/t
SU-23	2.8 m	10.6 m	7.8 m	3.98%		3.33 g/t	20.54 g/t
SU-52	0.0 m	5.0 m	5.0 m	3.88%		3.01 g/t	19.82 g/t
SU-59	0.0 m	4.1 m	4.1 m	5.40%		3.51 g/t	31.04 g/t
TA-87-27	31.1 m	32.3 m	1.2 m	5.60%		17.98 g/t	37.33 g/t
TA-87-40	81.1 m	83.5 m	2.4 m	10.05%		2.96 g/t	50.05 g/t
	91.4 m	94.2 m	2.8 m	10.82%		3.23 g/t	19.19 g/t
TA-90-50	65.5 m	70.1 m	4.6 m	4.12%		6.78 g/t	10.12 g/t
	84.6 m	87.5 m	2.9 m	3.90%		3.20 g/t	
	95.5 m	106.7 m	11.2 m	10.39%	0.10%	2.54 g/t	19.26 g/t
	114.0 m	129.5 m	15.5 m	6.57%	0.10%	8.05 g/t	23.58 g/t
TA-90-51	197.4 m	200.0 m	2.6 m	5.39%	0.21%	3.52 g/t	20.10 g/t
TA-90-52	201.2 m	203.3 m	2.1 m	5.21%		5.70 g/t	11.60 g/t
TA-90-56	81.0 m	84.4 m	3.4 m	5.75%		4.06 g/t	
	164.4 m	166.9 m	2.5 m	5.23%		6.18 g/t	
	215.7 m	219.6 m	3.9 m	6.74%		3.95 g/t	
TLT-09	247.4 m	249.7 m	2.3 m			4.28 g/t	





# Henderson-Portage Shear Plan Map with Depth Projection & Cross Section (Per Western Mining)



## Henderson I - Total Ore Extracted

1960–1971

1,818,976 T @ 2.23% Cu, 0.045 oz/t Au

## Henderson II - Total Ore Extracted

1960–1988

6,483,479 T @ 1.60% Cu, 0.041 oz/t Au

## Portage Mine - Total Ore Extracted

1959–1997

6,212,934 T @ 1.77% Cu, 0.114 oz/t Au

- Mine package forms a single multi-lensed orebody stretching along a broad NE-striking shear with > 1 mile of strike
- Portage Mine mined to a depth of 3,600 feet
- Western mining planned to explore and develop to 5000-foot depth

# At Home In North America

---



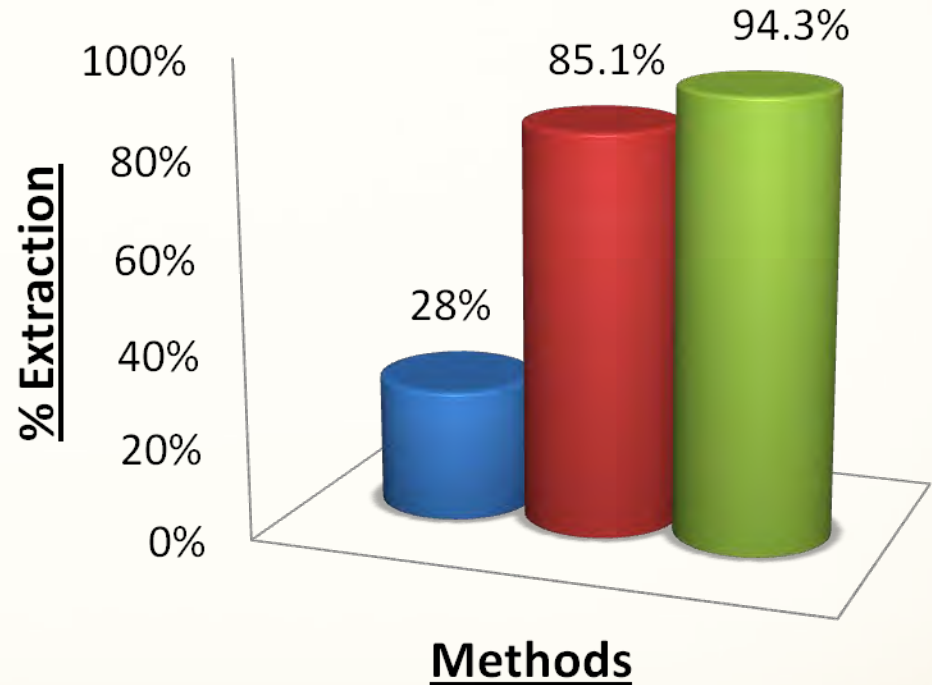
- Globex has 75 % interest and management
- Worldwide application of hydrometallurgical technology
- Gold recoveries of up to 98%
- Stabilizes arsenic residues
- Oxidizes sulphides in residues
- Low capital costs
- Low operating costs
  - No fine grinding
  - Recyclable reagents
- Extremely environmentally friendly



# Client # 1: Eco Refractory Solutions

## Method Benefits

- Lower Capital Cost
- Lower Operating Cost
  - No fine grind necessary
- Lower Energy cost
  - Does not require pressure leach (autoclave)
- Better Recoveries
- Environmentally Friendly
  - Arsenic Stabilized
  - Sulphides Oxidized
  - Faster Permitting



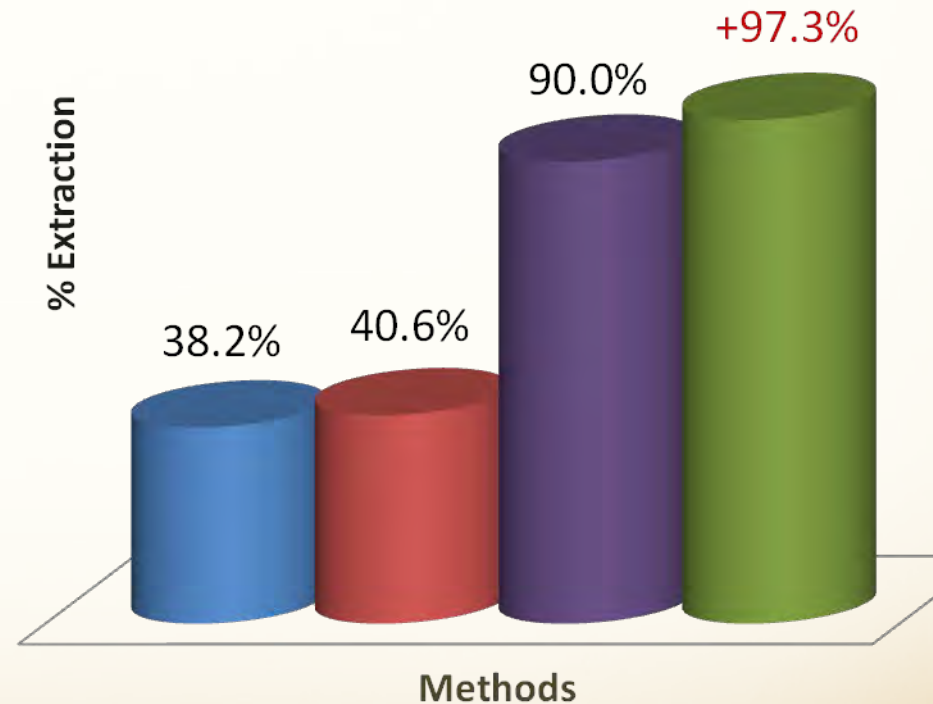
- Gravity
- Gravity, Flotation, Albion, Cyanidation
- Gravity, Flotation, Eco, Cyanidation



# Client # 2: Eco Refractory Solutions

- Large Tonnage, Low Grade, Open Pittable Gold Ore
- Refractory Ore – Fine Gold in Pyrite Lattice

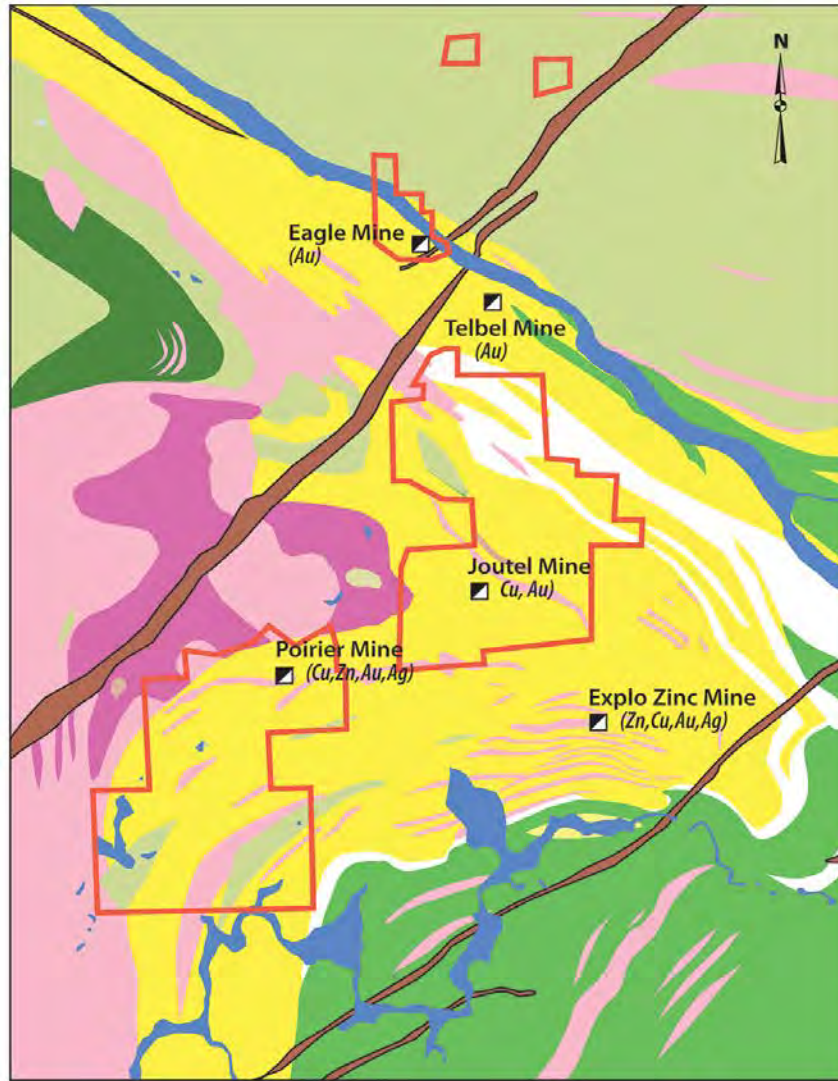
- Direct Cyanidation
- Fine Grinding, Direct Cyanidation
- Fine Grinding, \*Roasting, Cyanidation
- Fine Grinding, Eco Refractory Process, Cyanidation



\*Roasting requires high capital costs and energy consumption while creating numerous potentially dangerous and expensive environmental problems



# Joutel Compilation Map, Qc



- Two Copper, Zinc Silver Mines (Poirier and Joutel Copper)
- One Gold Mine (Eagle Mine)
- Large exploration package including showings and zones of alteration.

#### LEGEND

- Granodiorite
- Rhyolite and Quartz Rhyolite Porphyry
- Basalt, Massive and Pillowed
- Tonalite
- Intermediate Lapilli Tuff and Basalt
- Intermediate Tuffs
- Andesite and Basalt, Massive and Pillowed
- Diabase

0 625 1,250 2,500 3,750 5,000  
Metres

**GLOBEX MINING ENTERPRISES INC.**

**JOUTEL PROJECT (32E08)**

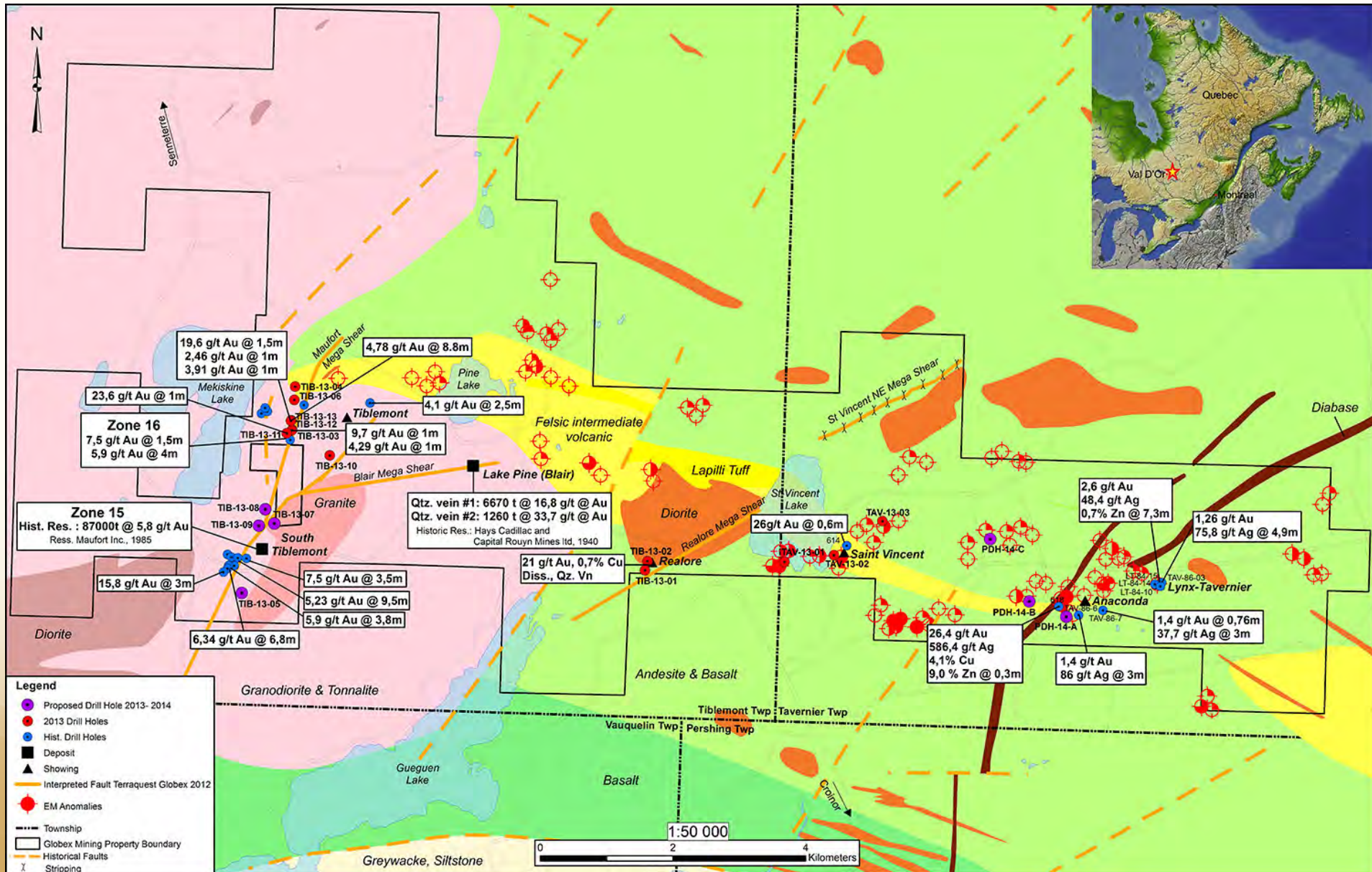
Joutel and Poirier Townships, Quebec

Date: August, 2012

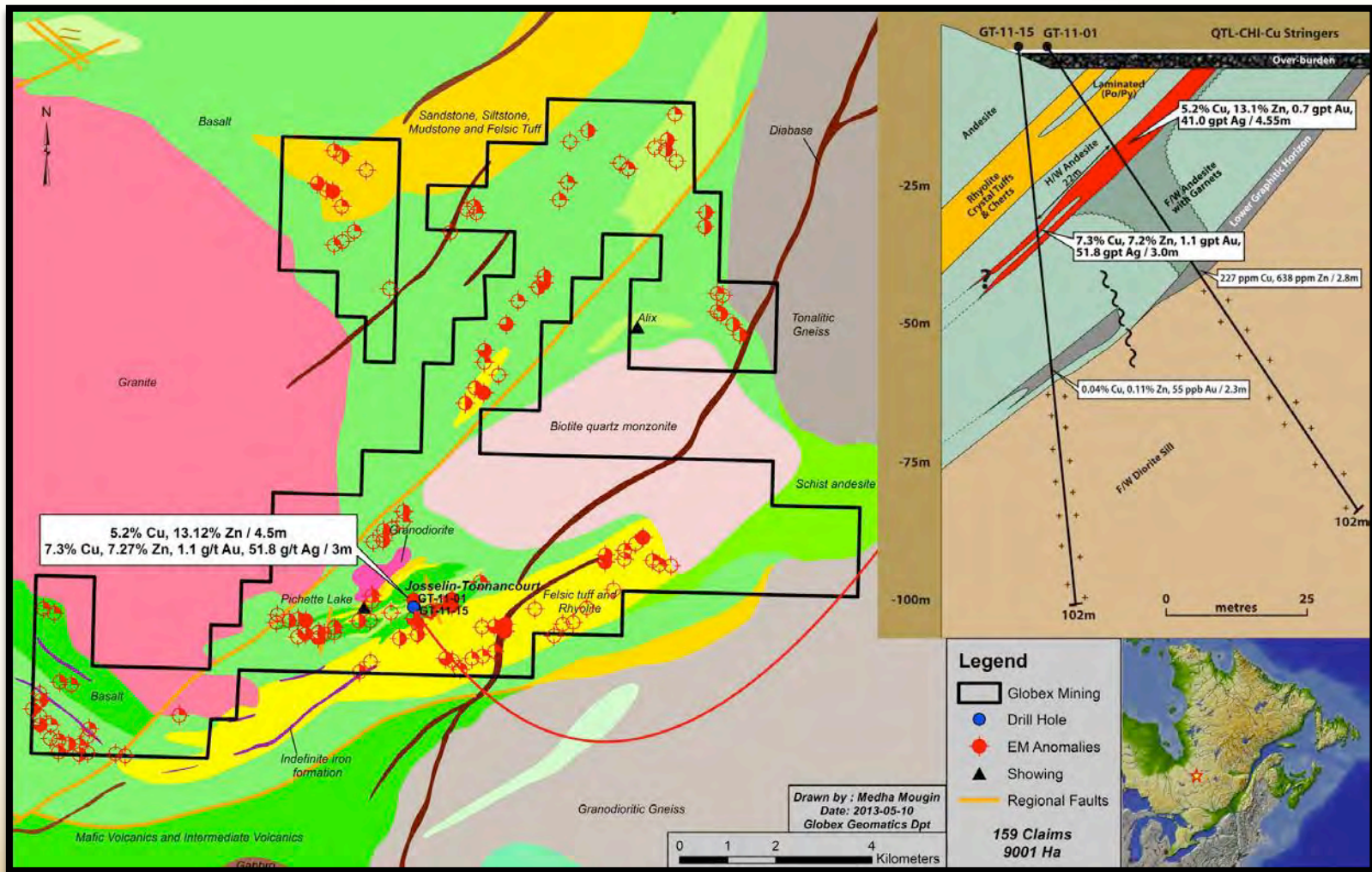


**GLOBEX**  
Mining Enterprises Inc.

# Tiblemont-Tavernier, Qc



# Tonnancour Project, Qc





**GLOBEX**  
Mining Enterprises Inc.

**THANK YOU**

**MERCI**

**DANKE**

**GRAZIE**

**MEEGWETCH**