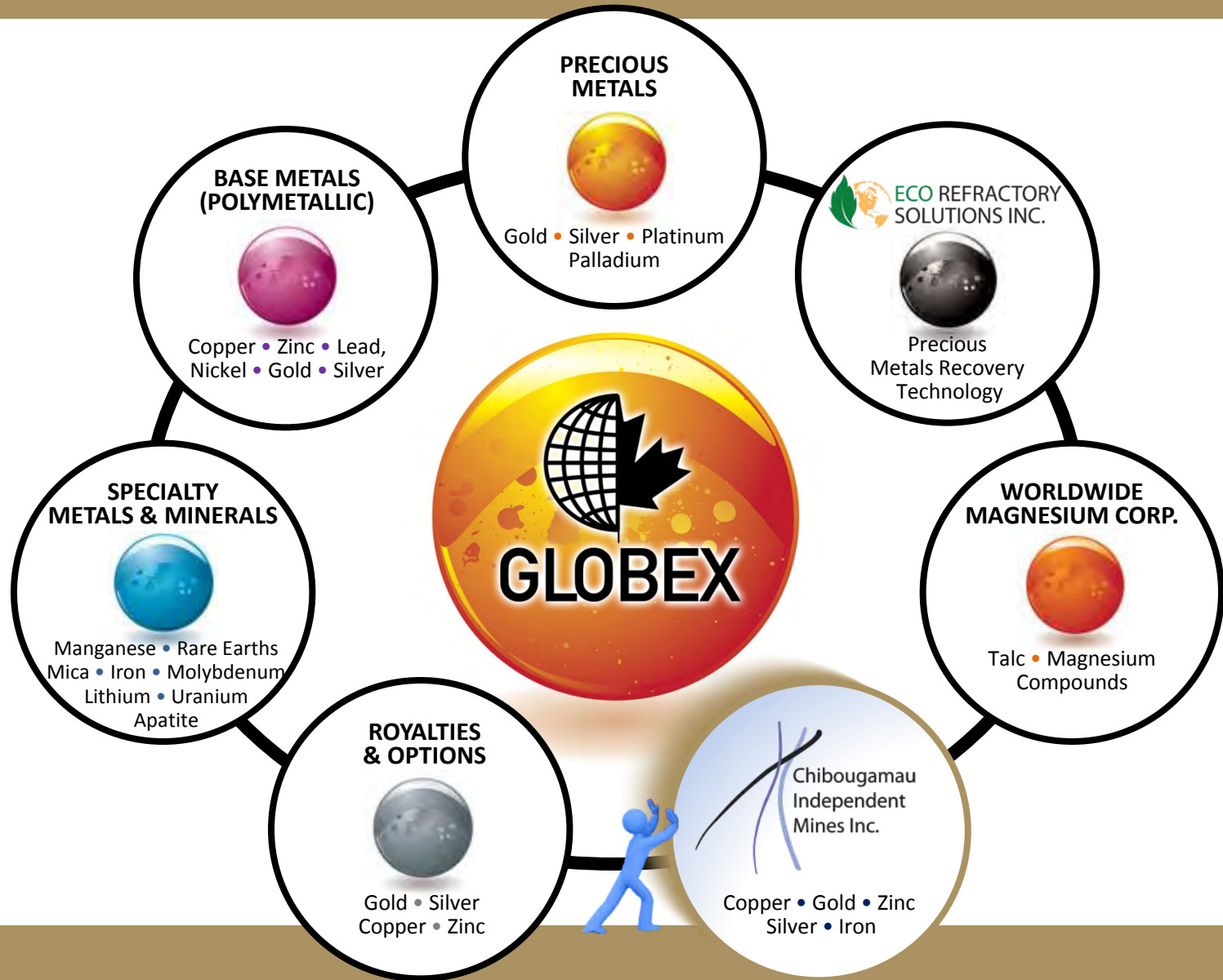


## **Forward-Looking Statements**

Except for historical information, this presentation may contain certain “forward-looking statements”. These statements may involve a number of known and unknown risks and uncertainties and other factors that may cause the actual results, level of activity and performance to be materially different from the expectations and projections of Globex. No assurance can be given that any events anticipated by the forward-looking information will transpire or occur, or if any of them do so, what benefits Globex will derive therefrom. A detailed discussion of the risk factors relating to Globex is available in Globex’s Annual Information Form, available at [www.sedar.com](http://www.sedar.com).

# At Home in North America



# Globex Mining Enterprises Inc.

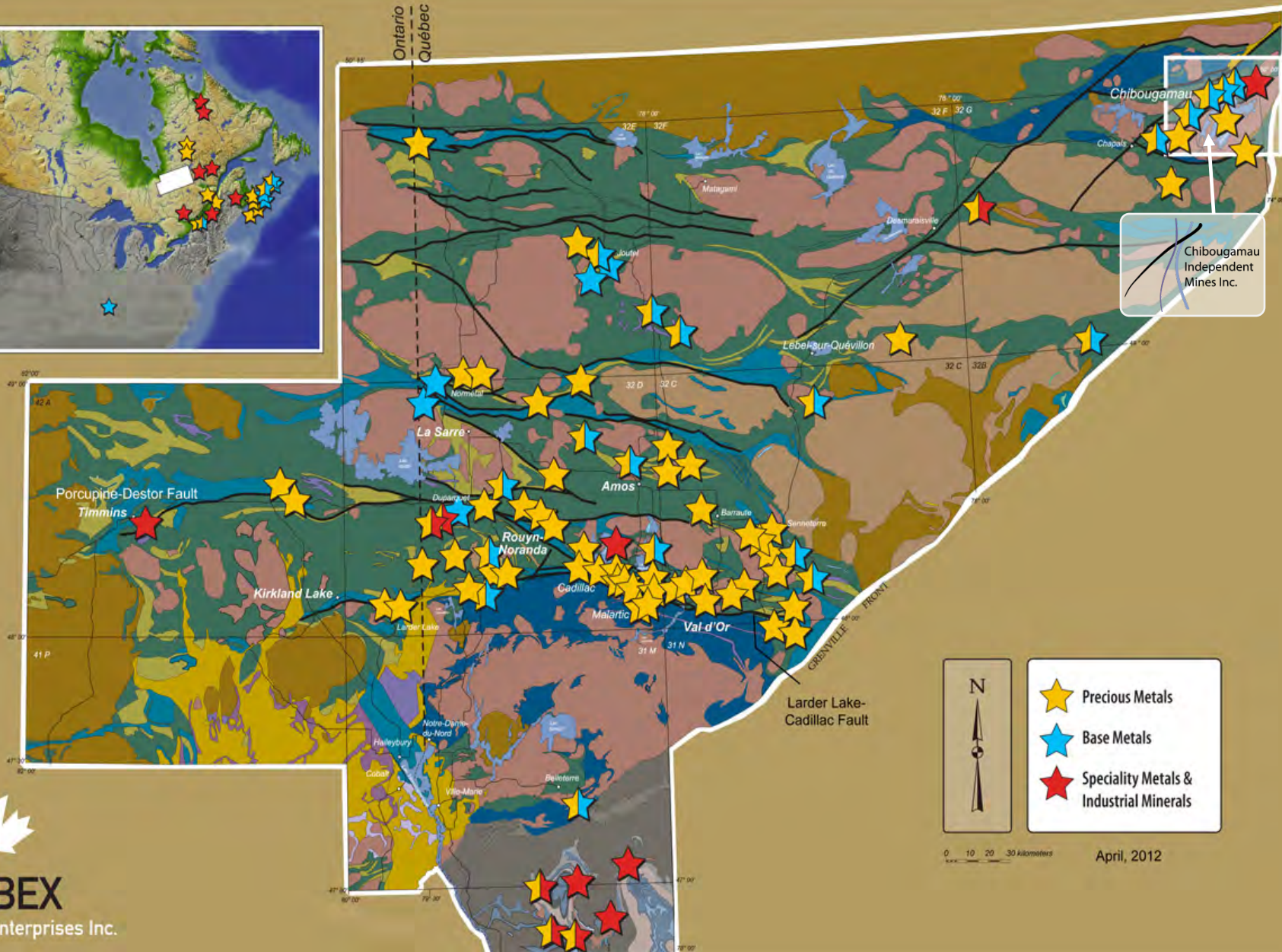
- Shares Issued        27,896,018 (no rollbacks)
  - Fully Diluted        29,823,918
- 
- Funds available for exploration
  - No debt
  - Own 100% of its property interests
  - Works in North America principally Quebec, Ontario, Nova Scotia and New Brunswick
  - Board of Directors – 4 senior geologists and 1 mining accountant

# Globex Mining Enterprises Inc.

## LISTINGS:

Toronto Stock Exchange	Canada	GMX
Frankfurt Stock Exchange	Germany	G1M
Berlin Stock Exchange	Germany	G1M
Stuttgart Stock Exchange	Germany	G1M
Munich Stock Exchange	Germany	G1M
Xetra Stock Exchange	Germany	G1M
OTCQX International	U.S.A.	GLBXF

# Diversified Mineral Holdings: Abitibi Geological Belt



**GLOBEX**

Globex Mining Enterprises Inc.



# Mineral Diversification Today for the Future

## PRECIOUS METALS



Au		Gold
Ag		Silver
Pt		Platinum
Pd		Palladium

## BASE METALS



Cu		Copper
Zn		Zinc
Ni		Nickel
Pb		Lead

## SPECIALTY METALS



REE		Rare Earths
Fe		Iron
Mn		Manganese
Mo		Molybdenum
U		Uranium
F		Fluorine
Li		Lithium
Hf		Hafnium
Ce		Cerium
Zr		Zirconium
Y		Yttrium
Nb		Niobium

## INDUSTRIAL MINERALS



Mg		Magnesite
Talc		Talc
Mica		Phlogopite Mica
Apa		Apatite



**GLOBEX**

Globex Mining Enterprises Inc.

# At Home in North America



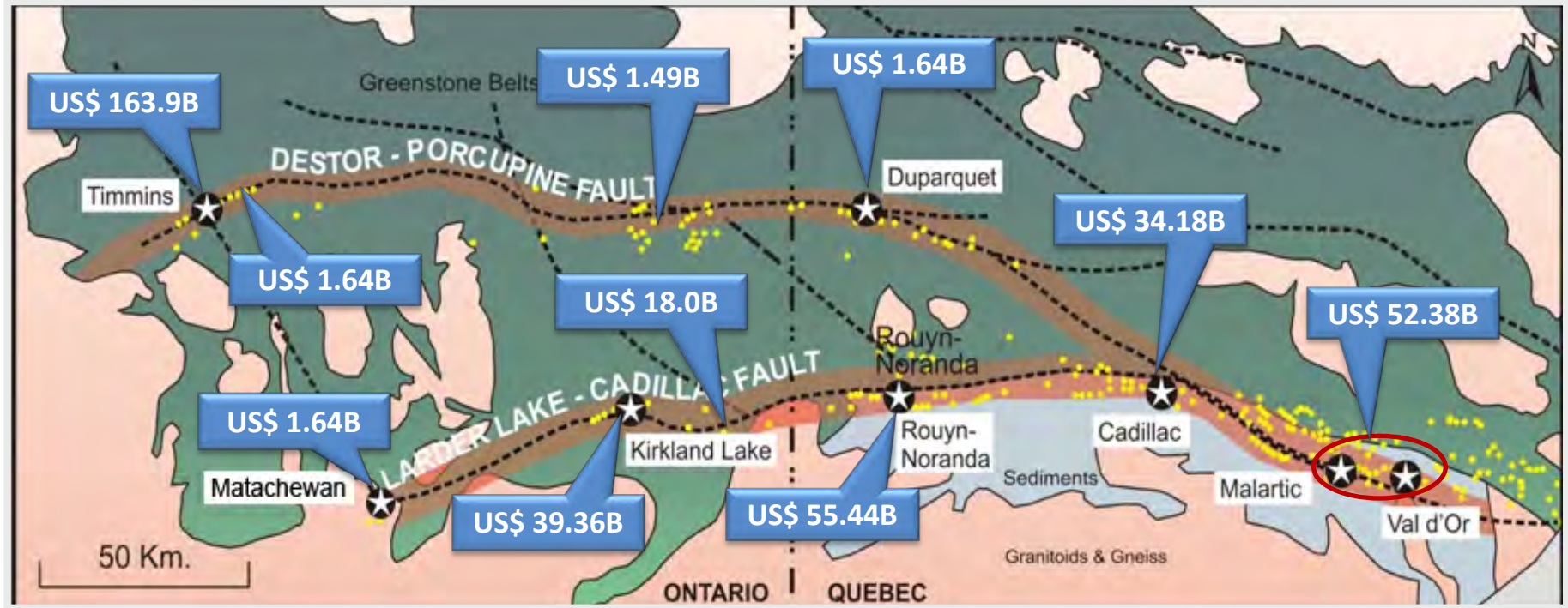
<b>107</b>	Properties
<b>75</b>	Precious Metal - Gold, Silver, Platinum, Palladium
<b>21</b>	Base Metals and Polymetallic - Copper, Zinc, Gold, Silver, Lead, Nickel
<b>11</b>	Specialty Metals and Minerals - Iron, Lithium, Magnesium Oxide, Manganese, Mica, Molybdenum, Rare Earths, Talc, Uranium, Titanium
<b>21</b>	Royalties
<b>10</b>	Active options <ul style="list-style-type: none"> <li>• Cash payments</li> <li>• Share payments</li> <li>• Exploration &amp; development expenditures</li> <li>• Gross metal royalty</li> </ul>
<b>38</b>	Historical or NI 43-101 resources

Note: Some properties have been combined due to proximity or infill staking

# Historical Value of production in US\$

Southern Abitibi Quebec & Ontario

**Total: US\$ 370.7 Billion**



**Au 166.61 million oz**

**Ag 635.8 million oz**

**Zn 28.0 billion lb**

**Cu 14.5 billion lb**

### Metal Prices Used in Calculations

Au	\$ 1640.00/oz	Zn	\$ 0.88/lb
Ag	\$ 30.00/oz	Cu	\$ 3.60/lb

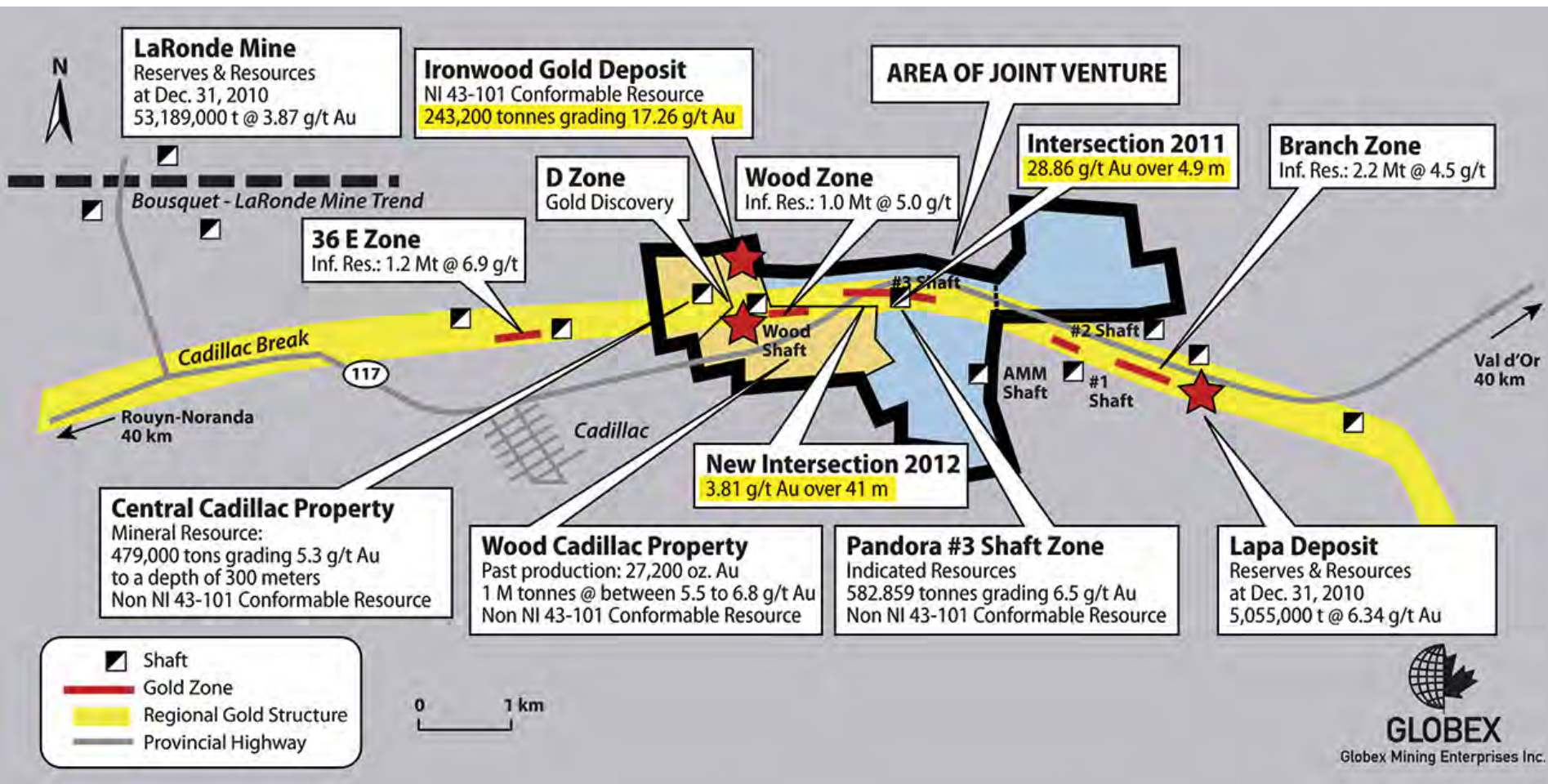


**GLOBEX**

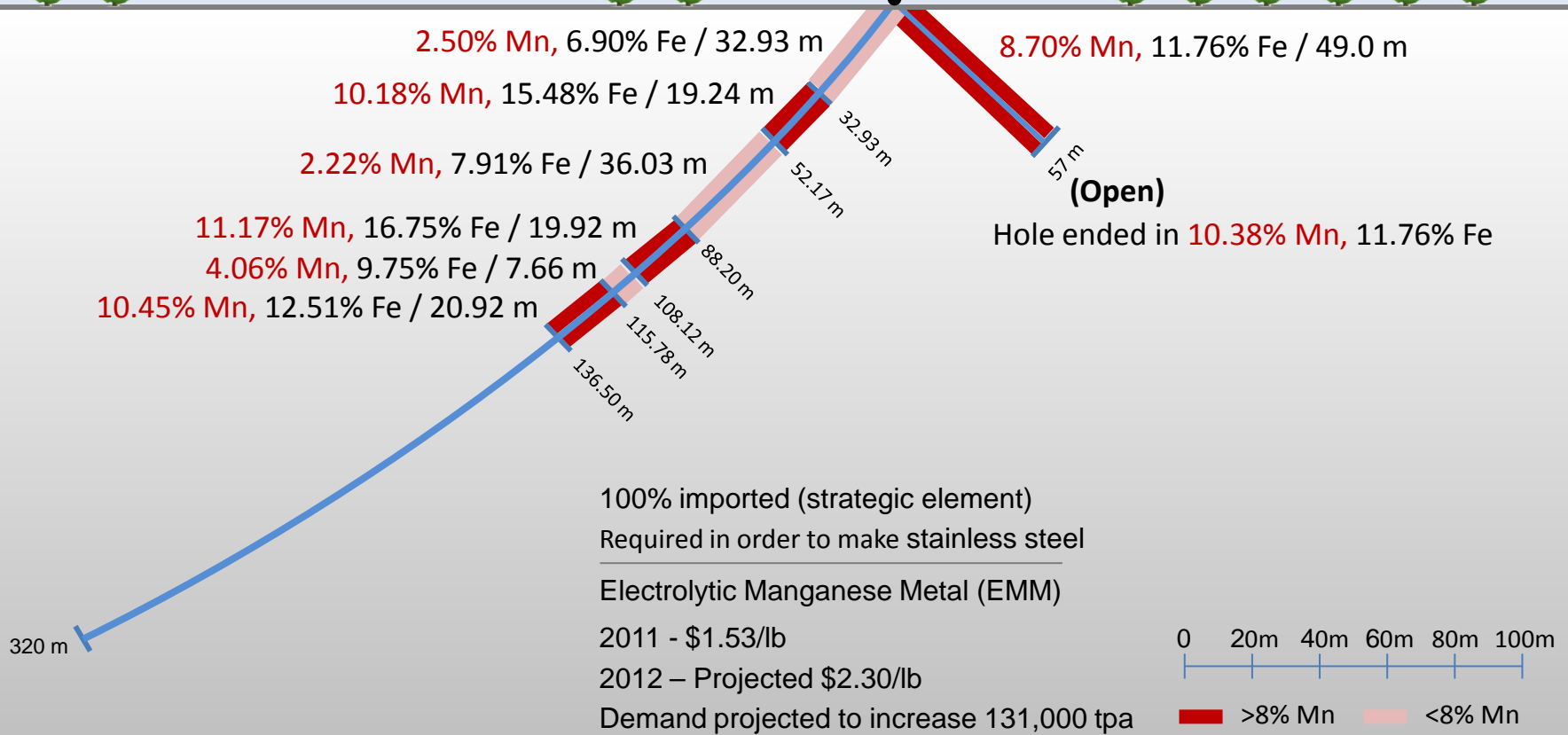
Globex Mining Enterprises Inc.



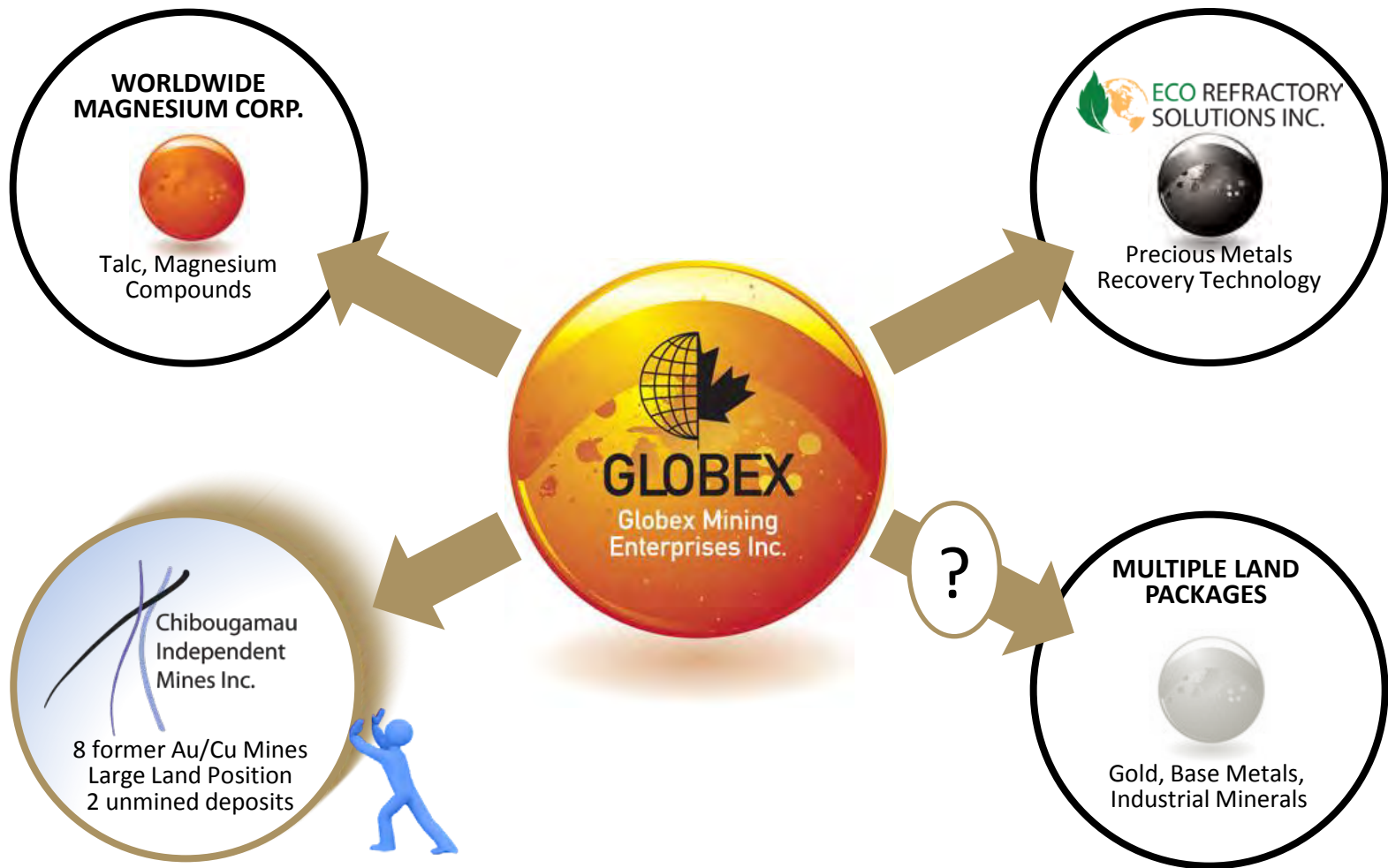
# Cadillac Gold Camp (Wood – Pandora Joint Venture)



# Iron Hill – Manganese/Iron Deposit 21 J 04 (Woodstock, N.B.)



# Realization of True Value – Spin-outs?



# Shares, Warrant & Options

Shares Issued December 28, 2012	Shares	Cash
Common Share Dividend	27,896,018	\$240,000
Flow-Through Shares (per Financing \$0.65)	2,181,230	\$1,417,799
Hard Dollar Shares (per Financing \$0.50)	2,400,000	\$1,200,000
	<u>32,477,248</u>	<u>\$2,857,799</u>
Principals (90% Escrow)	-6,049,638	
<b>Fully Diluted</b>		
Stock Options	1,137,900	-
Two Warrants (\$0.80 for 12 months)	4,581,230	\$1,832,492

# Chibougamau Mining Camp – Quebec



- 100% interest in a major land package in the Chibougamau Mining Camp – 6,528 hectares
- 5 former copper-gold mines
- Down dip of 3 large copper-gold deposits
- 2 unmined deposits (Au, Ag, Zn - Berrigan) & (Cu, Au – Bateman Bay)
- 1 unmined iron/titanium/vanadium deposit
- Several partially defined copper-gold zones
- Large exploration land package with numerous targets
- No environmental liabilities

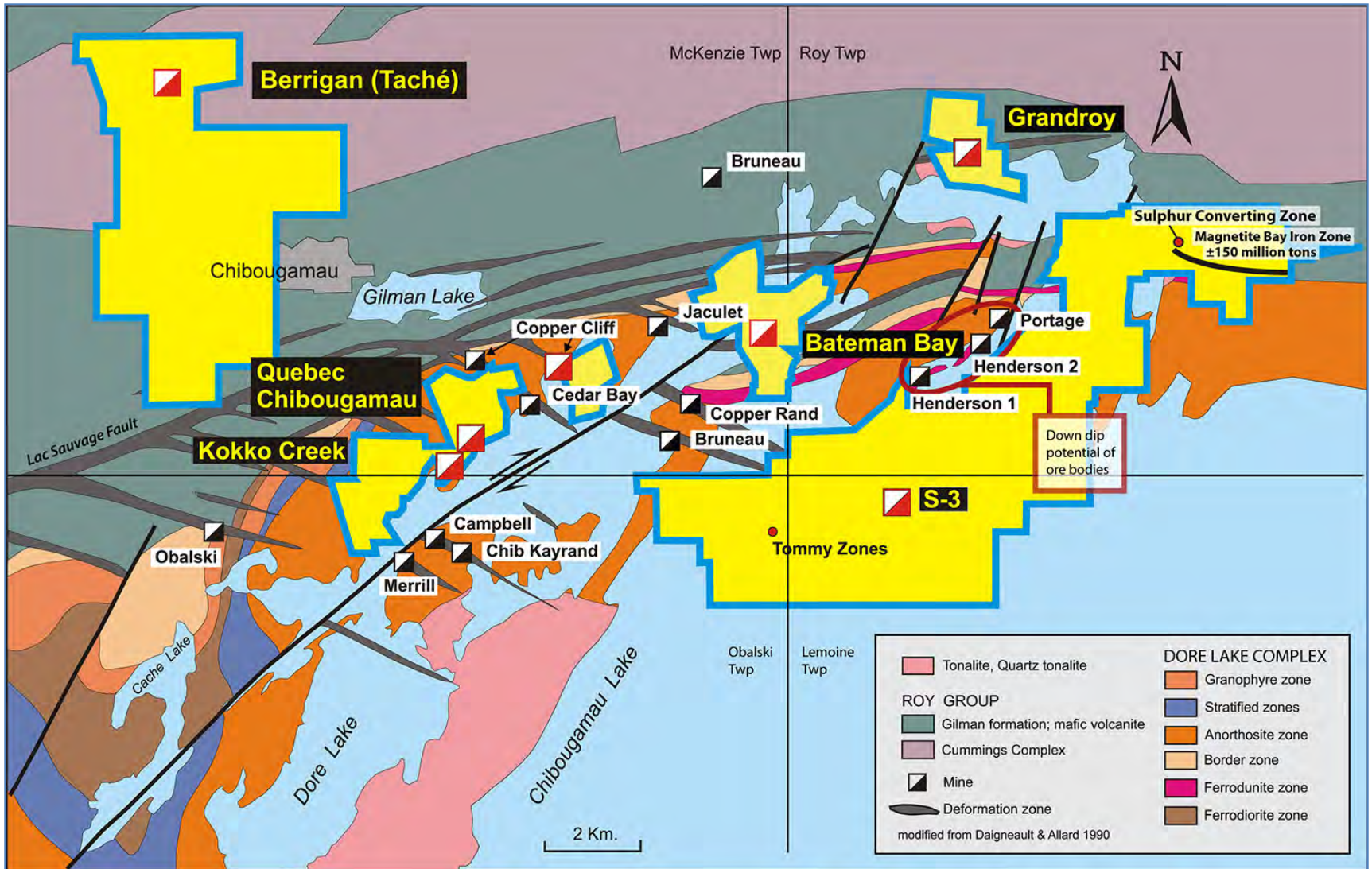


# Doré Lake Complex

- Historical production
  - **47.6 million tons**
    - 1.6 billion lbs of Cu
    - 3.2 million oz Au
  - **Average grade**
    - 1.69% Copper
    - 2.40 g/t Gold
- 3,000 tpd mill and permitted tailings facility central to CIM property package

Source: C Bay Minerals Inc.

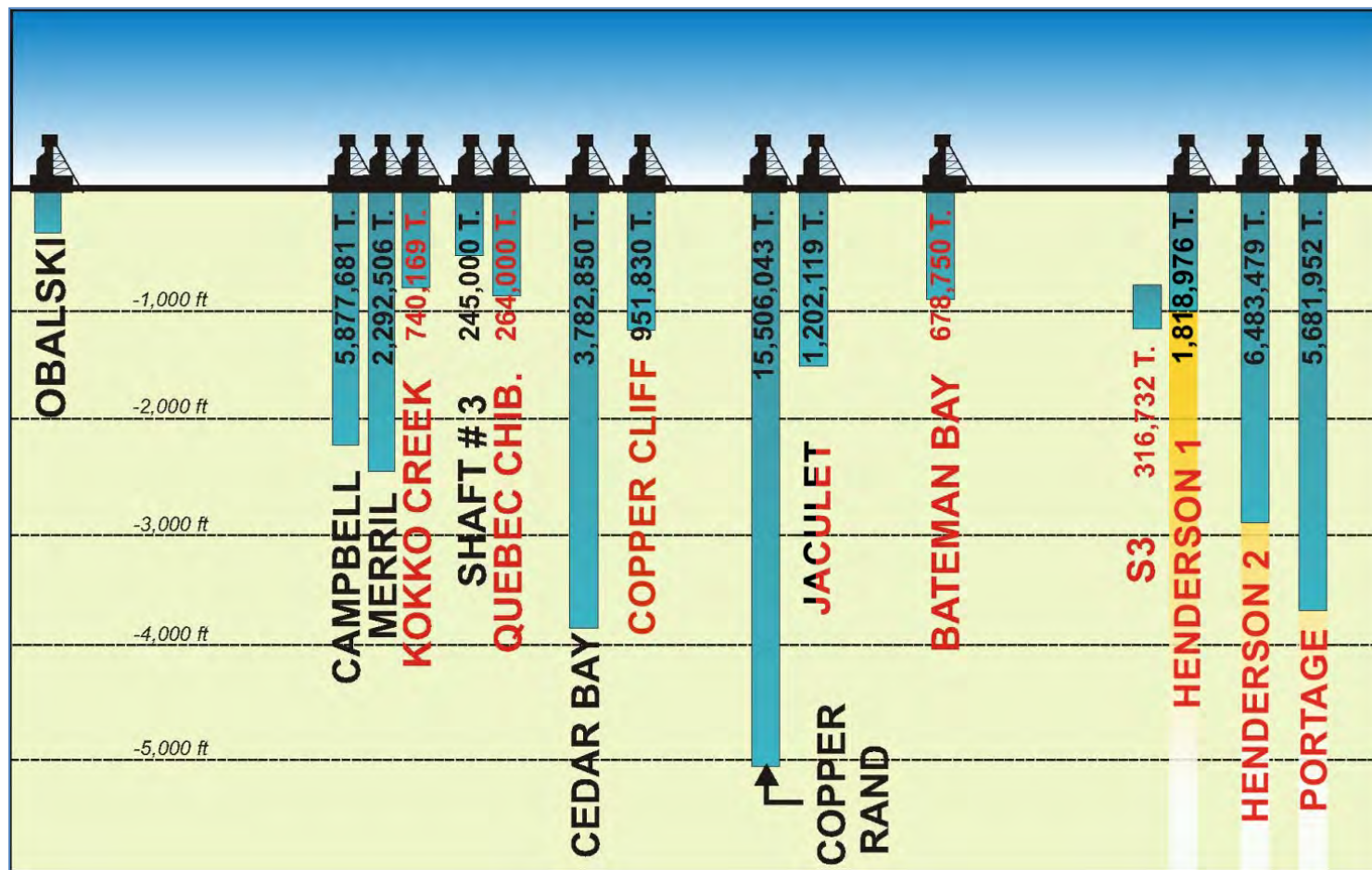
# Geological Map of Chibougamau Area



**Chibougamau Independent Mines Inc.**

Lemoine, Obalski, McKenzie & Roy Townships, Quebec (32 G/16)

# Doré Lake Complex (Copper-Gold)



Longitudinal Section – Chibougamau area, Quebec

# Some significant gold intersections within previous drilling Berrigan Property 32G16

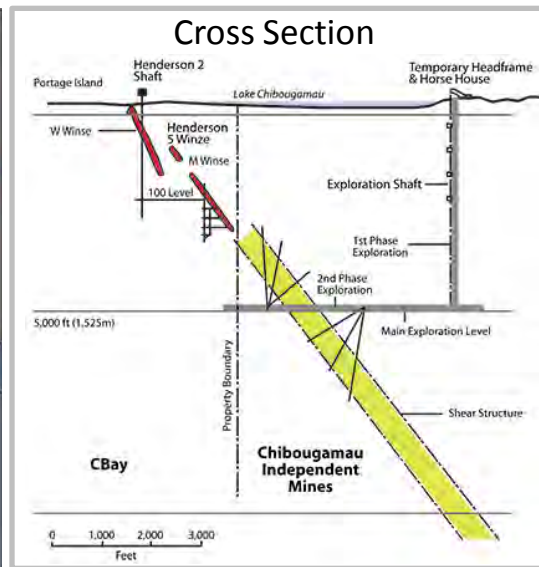
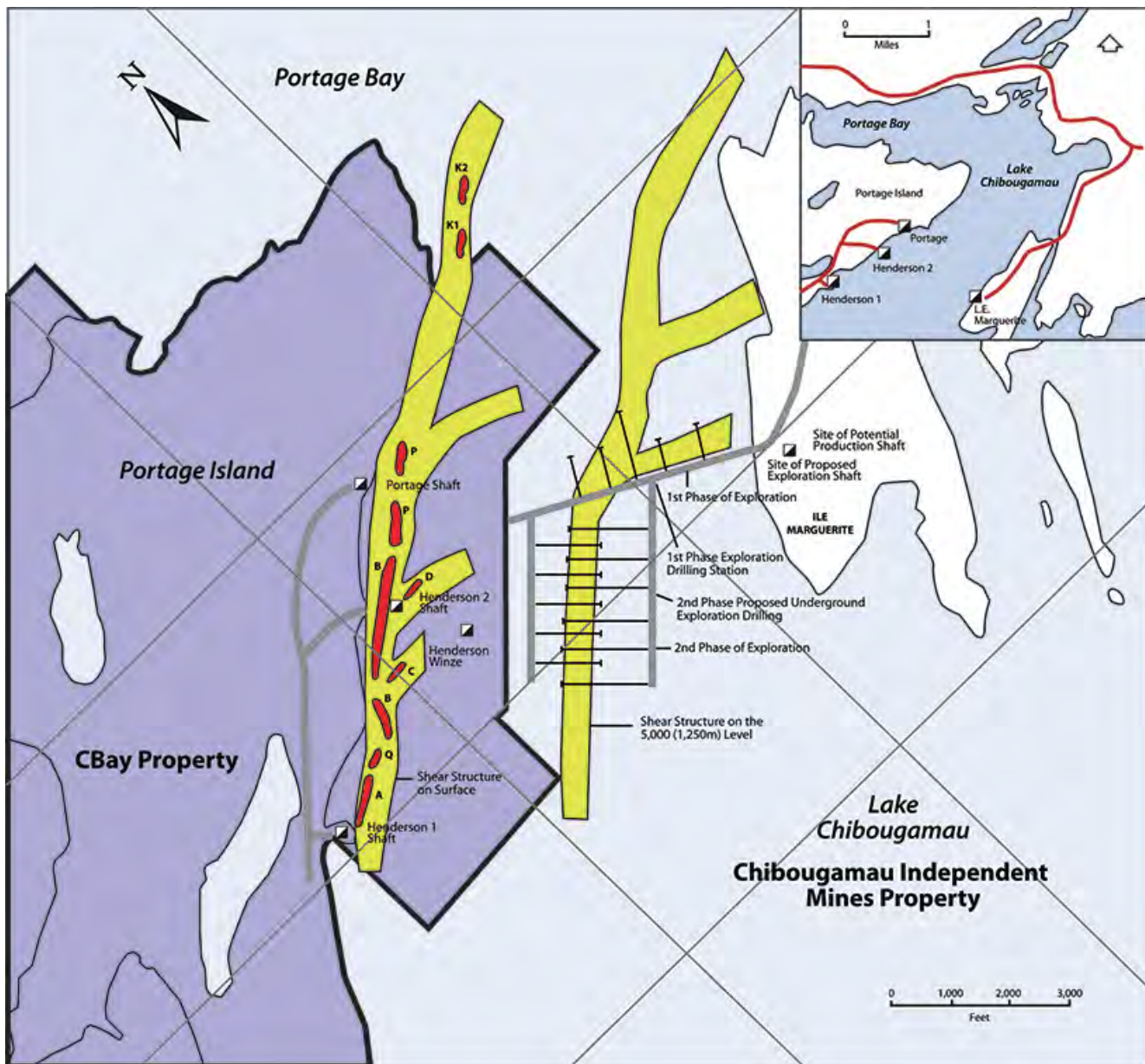
## Surface diamond drill holes

Hole #	From	To	Interval	% Zn	% Cu	Au g/t	Ag g/t
A-005	131.4 m	140.2 m	8.8 m	5.70%		6.96 g/t	
A-010	97.3 m	105.2 m	7.9 m	4.43%		4.94 g/t	25.36 g/t
A-016	18.9 m	21.2 m	2.3 m	1.51%		6.43 g/t	
	76.2 m	77.7 m	1.5 m	3.45%		8.91 g/t	
A-061	91.6 m	100.6 m	9.0 m	3.76%	0.16%	3.00 g/t	17.24 g/t
	107.1 m	115.7 m	8.6 m	6.15%	0.17%	8.14 g/t	39.70 g/t
A-062	59.3 m	61.1 m	1.8 m	6.92%		4.62 g/t	17.14 g/t
A-063	113.7 m	114.3 m	0.6 m	17.55%		49.23 g/t	404.64 g/t
	129.4 m	132.8 m	3.4 m	8.86%		8.88 g/t	68.16 g/t
	138.9 m	141.5 m	2.6 m	4.69%		4.04 g/t	11.14 g/t
A-065	121.6 m	125.7 m	4.6 m	7.67%		6.08 g/t	21.56 g/t
	139.8 m	144.5 m	4.7 m	2.80%		3.55 g/t	7.64 g/t
	164.7 m	167.2 m	2.5 m	3.13%		6.95 g/t	15.44 g/t
A-066	100.6 m	101.8 m	1.2 m	22.90%		36.65 g/t	39.73 g/t
	159.8 m	168.8 m	9.0 m	6.26%		5.19 g/t	19.60 g/t
A-067	157.1 m	158.2 m	1.1 m	16.75%		10.96 g/t	
A-072	188.7 m	190.9 m	2.2 m	5.08%		3.13 g/t	
A-073	144.8 m	145.1 m	0.3 m	27.90%		32.88 g/t	
A-076	126.3 m	129.8 m	3.5 m	11.07%		3.02 g/t	
A-083	94.3 m	96.3 m	2.0 m	4.45%		3.79 g/t	10.34 g/t
	119.4 m	132.6 m	13.2 m	4.99%		2.88 g/t	15.91 g/t
A-084	130.3 m	142.8 m	12.5 m	4.58%		5.10 g/t	17.18 g/t
A-086	50.9 m	52.1 m	1.2 m	7.00%		15.07 g/t	59.60 g/t
A-103	56.4 m	59.4 m	3.0 m	5.84%		11.61 g/t	

Hole #	From	To	Interval	% Zn	% Cu	Au g/t	Ag g/t
U-02	44.9 m	45.6 m	0.7 m	2.95%		17.81 g/t	89.74 g/t
	90.4 m	91.4 m	1.0 m	13.80%		26.72 g/t	58.91 g/t
	95.8 m	108.7 m	12.9 m	5.75%		3.11 g/t	15.17 g/t
U-03	8.2 m	16.6 m	8.4 m	13.09%		6.98 g/t	20.71 g/t
	49.4 m	64.0 m	14.4 m	8.69%		3.41 g/t	17.49 g/t
U-04	17.4 m	19.7 m	2.3 m	12.77%		4.60 g/t	14.65 g/t
	85.9 m	86.6 m	0.7 m	7.05%		37.68 g/t	78.09 g/t
U-09	71.8 m	75.8 m	4.0 m	2.32%		4.32 g/t	12.43 g/t
SU-23	2.8 m	10.6 m	7.8 m	3.98%		3.33 g/t	20.54 g/t
SU-52	0.0 m	5.0 m	5.0 m	3.88%		3.01 g/t	19.82 g/t
SU-59	0.0 m	4.1 m	4.1 m	5.40%		3.51 g/t	31.04 g/t
TA-87-27	31.1 m	32.3 m	1.2 m	5.60%		17.98 g/t	37.33 g/t
TA-87-40	81.1 m	83.5 m	2.4 m	10.05%		2.96 g/t	50.05 g/t
	91.4 m	94.2 m	2.8 m	10.82%		3.23 g/t	19.19 g/t
TA-90-50	65.5 m	70.1 m	4.6 m	4.12%		6.78 g/t	10.12 g/t
	84.6 m	87.5 m	2.9 m	3.90%		3.20 g/t	
	95.5 m	106.7 m	11.2 m	10.39%	0.10%	2.54 g/t	19.26 g/t
	114.0 m	129.5 m	15.5 m	6.57%	0.10%	8.05 g/t	23.58 g/t
TA-90-51	197.4 m	200.0 m	2.6 m	5.39%	0.21%	3.52 g/t	20.10 g/t
TA-90-52	201.2 m	203.3 m	2.1 m	5.21%		5.70 g/t	11.60 g/t
TA-90-56	81.0 m	84.4 m	3.4 m	5.75%		4.06 g/t	
	164.4 m	166.9 m	2.5 m	5.23%		6.18 g/t	
	215.7 m	219.6 m	3.9 m	6.74%		3.95 g/t	
TLT-09	247.4 m	249.7 m	2.3 m			4.28 g/t	



# Henderson-Portage Shear Plan Map with Depth Projection & Cross Section (per Western Mining)



**Henderson I - Total Ore Extracted**  
 1960 – 1971  
 1,818,976 T @ 2.23% Cu, 0.045 oz/t Au

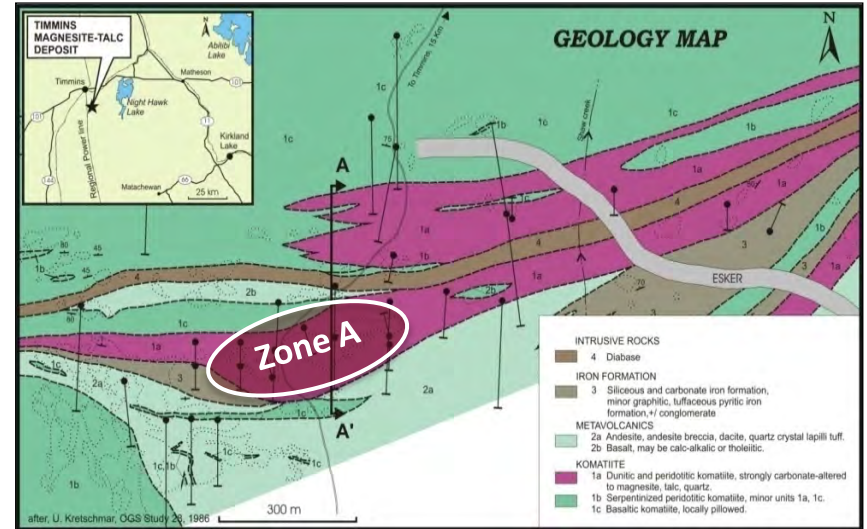
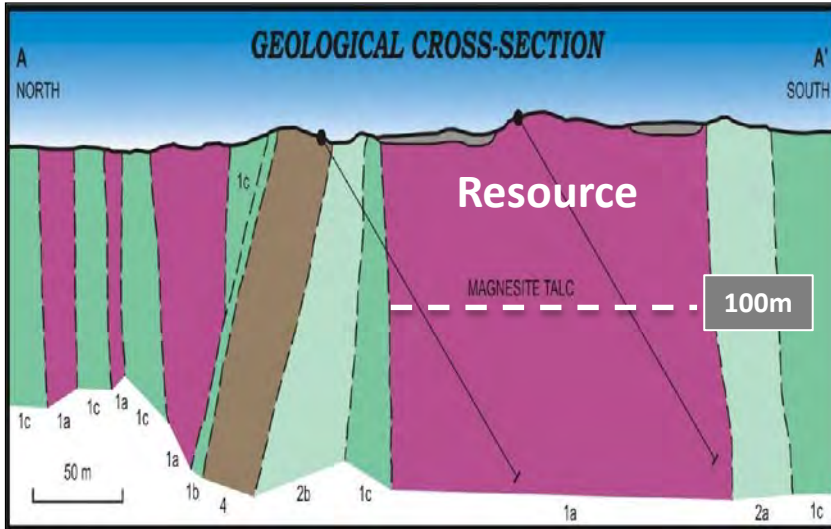
**Henderson II - Total Ore Extracted**  
 1960 – 1988  
 6,483,479 T @ 1.60% Cu, 0.041 oz/t Au

**Portage Mine - Total Ore Extracted**  
 1959 – 1997  
 6,212,934 T @ 1.77% Cu, 0.114 oz/t Au

- Mine package forms a single multi-lensed orebody stretching along a broad NE-striking shear with > 1 mile of strike
- Portage Mine mined to a depth of 3,600 feet
- Westminer planned to explore and develop to 5000-foot depth



# Timmins Talc-Magnesite Project



Resource Category - Zone A	Tonnage (t)	Magnesite (%)	Talc (%)
Indicated	12,728,000	52.1	35.4
Inferred	18,778,000	53.1	31.7

## 20 year Preliminary Economic Assessment

- |                            |                        |                   |                          |
|----------------------------|------------------------|-------------------|--------------------------|
| • Magnesium Oxide (MgO)    | > 94.8% Recovery       | • Size Potential  | + 100 M. Tonnes          |
| • Talc                     | > 70.8% Recovery       | • Life            | + 60 years (Zone A only) |
| • Annual Tonnage Processed | 500,000 tonnes         | • Mining Method   | - Open Pit               |
| • Total Sales (Gross)      | > \$2,578,000,000 Cdn. | • MgO Purity      | + 98%                    |
| • Pre-Production Cap Ex    | > \$268,400,000 Cdn.   | • Talc Brightness | 93-95                    |
| • Price (MgO)              | > \$570/t Cdn.         | • After Tax IRR   | 20%                      |
| • Price (Talc)             | > \$500/t Cdn.         |                   |                          |

Projections based upon Micon International Limited PEA Report April 16, 2012



# GLOBEX

Globex Mining Enterprises Inc.

# At Home in North America



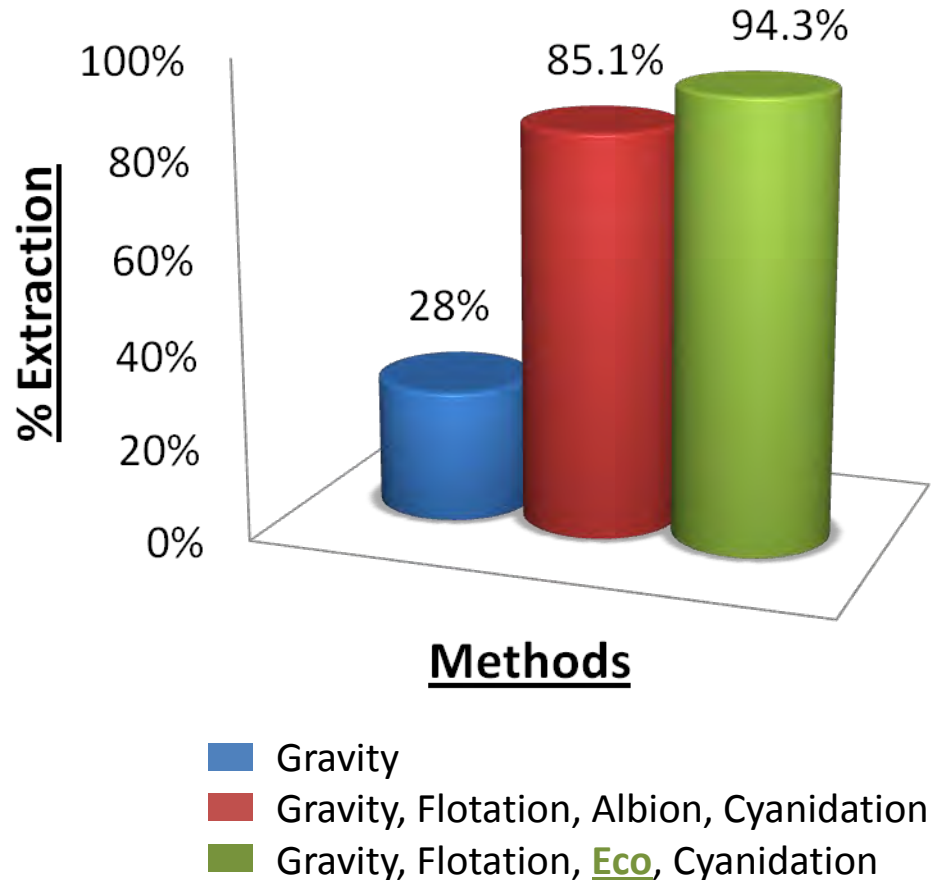
- Globex has 75 % interest and management
- Worldwide application of hydrometallurgical technology
- Gold recoveries of up to 98%
- Stabilizes arsenic residues
- Oxidizes sulphides in residues
- Low capital costs
- Low operating costs
  - No fine grinding
  - Recyclable reagents
- Extremely environmentally friendly

# Client # 1: Eco Refractory Solutions

## Method Benefits

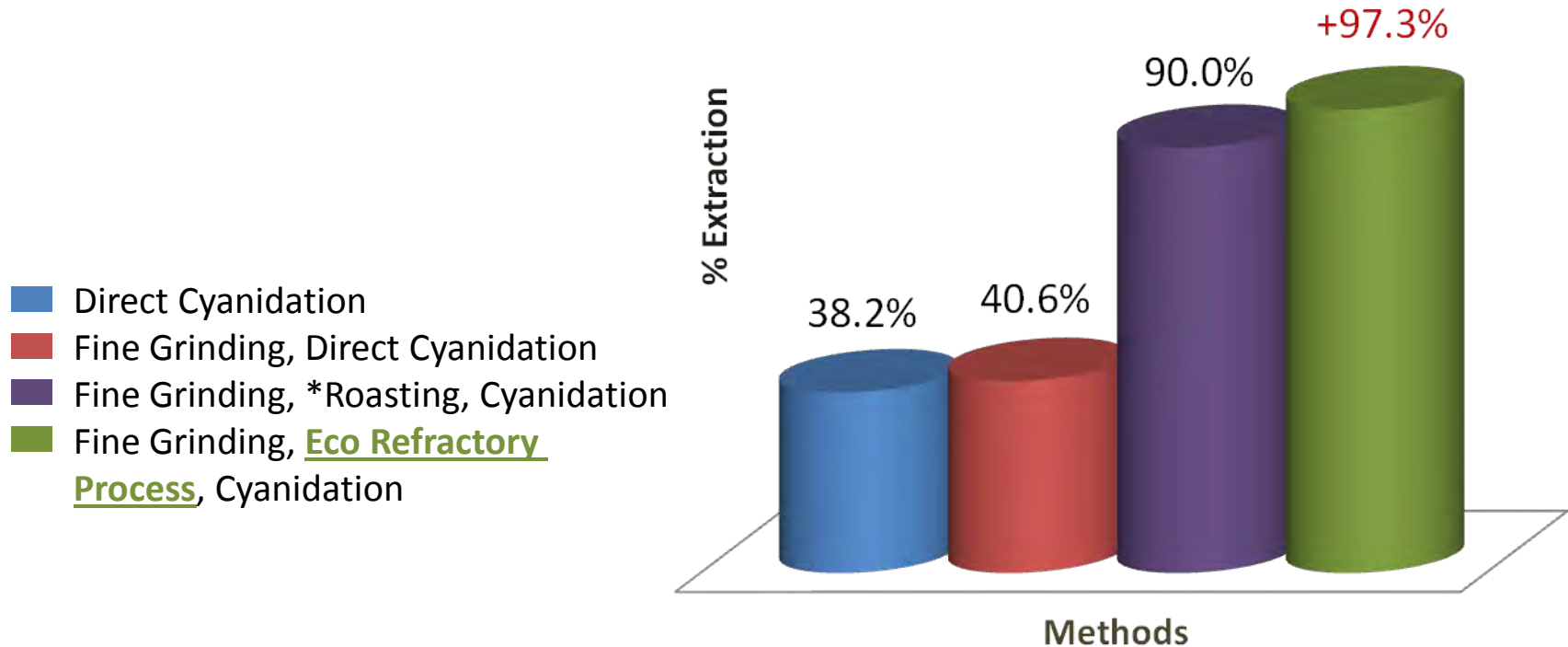
---

- Lower Capital Cost
- Lower Operating Cost
  - No fine grind necessary
- Lower Energy cost
  - Does not require pressure leach (autoclave)
- Better Recoveries
- Environmentally Friendly
  - Arsenic Stabilized
  - Sulphides Oxidized
  - Faster Permitting



# Client # 2 – Eco Refractory Solutions

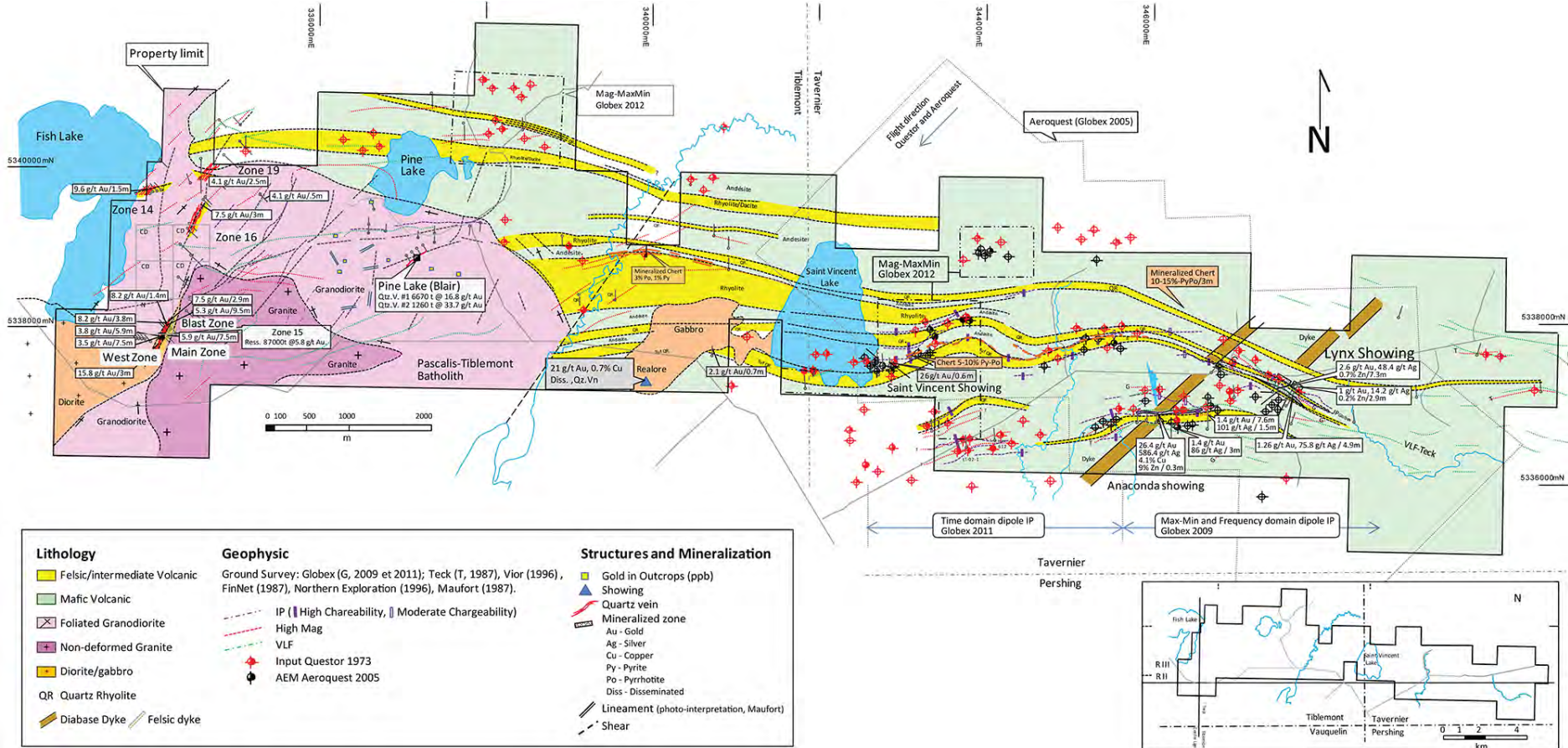
- Large Tonnage, Low Grade, Open Pittable Gold Ore
- Refractory Ore – Fine Gold in Pyrite Lattice



\*Roasting requires high capital costs and energy consumption while creating numerous potentially dangerous and expensive environmental problems

# Tiblemont-Tavernier, QC

## 32C03 Compilation Map



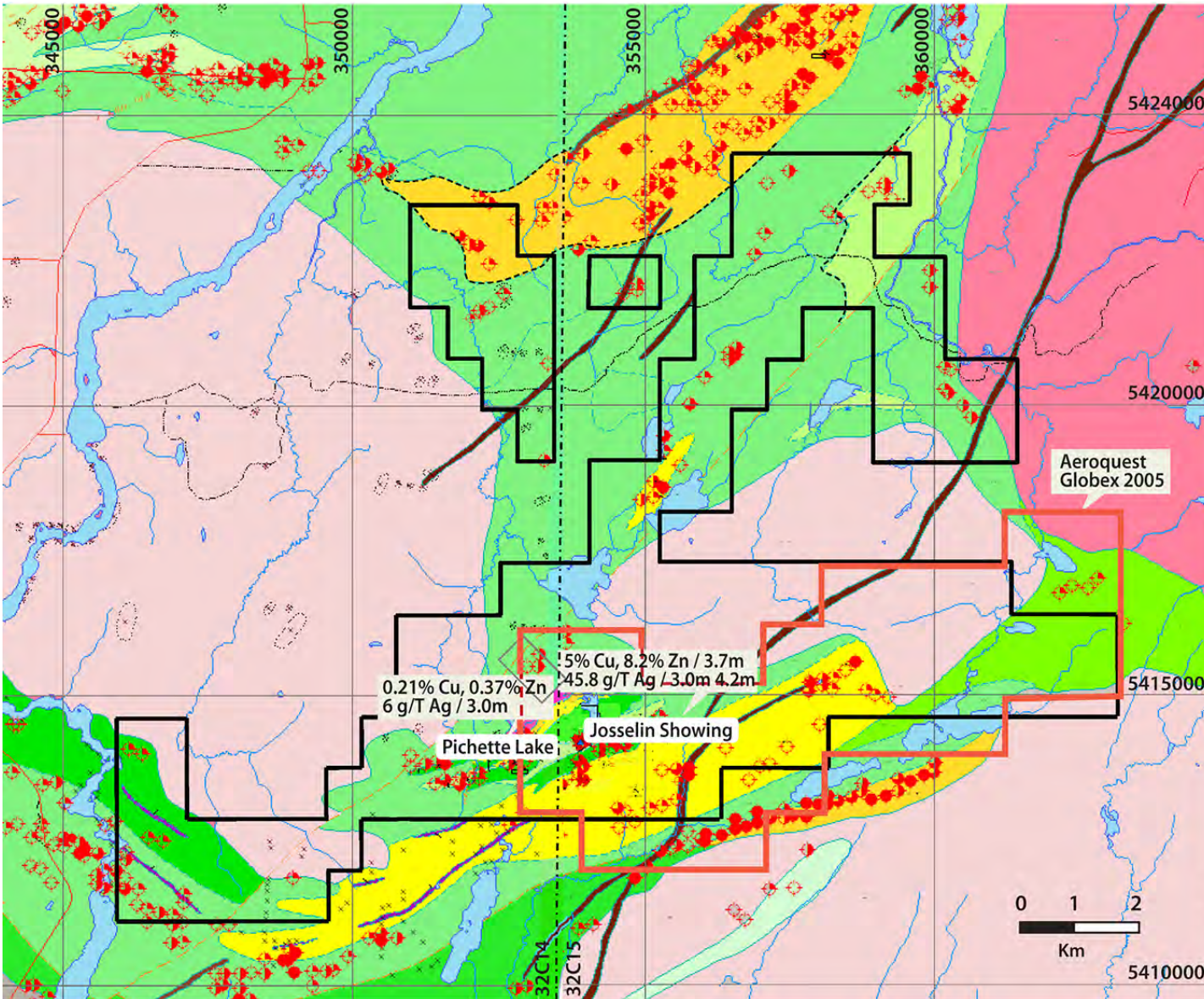
**GLOBEX**

Globex Mining Enterprises Inc.



# Tonnancour Project, Quebec

- Massive sulphide targets (Cu, Zn, Au, Ag)



## LEGEND

- Diabase
- Quartz Feldspathic Gneiss
- Granite
- Tonalite
- Mudstone and Felsic Tuff
- Felsic Volcanics
- Intermediate Volcanics
- Mafic Volcanics
- Questor Anomaly

<b>GLOBEX MINING ENTERPRISES INC.</b>
<b>TONNANCOUR PROJECT (32C15/32C15)</b> Tonnancour
Date: August, 2012



# Joutel Compilation Map, QC

- Two Copper, Zinc, Gold, Silver Mines (Poirier and Joutel Copper)
- One Gold Mine (Eagle Mine)
- Large exploration package including showings and zones of alteration.

## LEGEND

- Granodiorite
- Rhyolite and Quartz Rhyolite Porphyry
- Basalt, Massive and Pillowed
- Tonalite
- Intermediate Lapilli Tuff and Basalt
- Intermediate Tuffs
- Andesite and Basalt, Massive and Pillowed
- Diabase

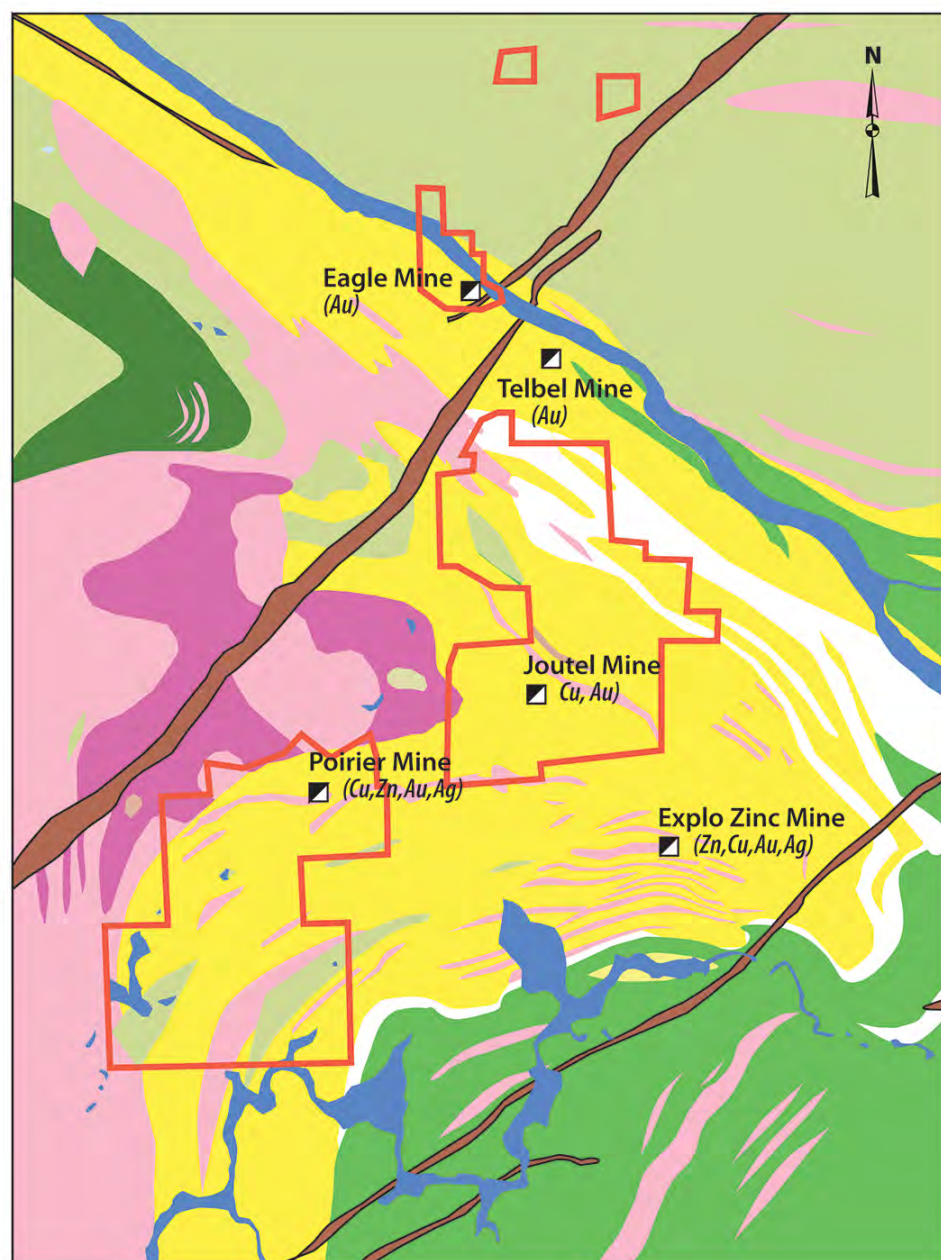
0 625 1,250 2,500 3,750 5,000  
Metres

**GLOBEX MINING ENTERPRISES INC.**

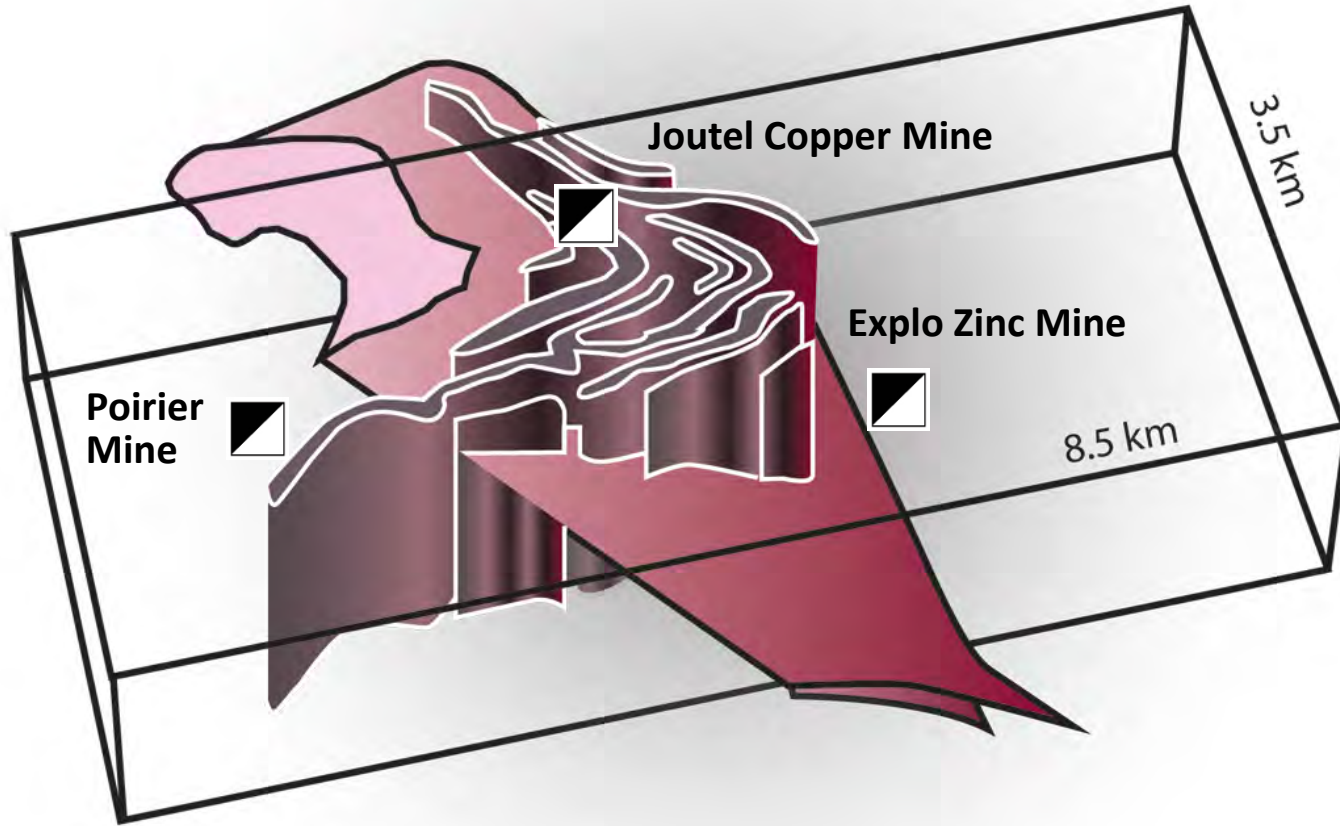
**JOUTEL PROJECT (32E08)**

Joutel and Poirier Townships, Quebec

Date: August, 2012



# Joutel Mine Model



**GLOBEX**

Globex Mining Enterprises Inc.

# At Home in North America

Thank you

Merci

